



21201 Itasca St.
Chatsworth, CA 91311
Phone: (818) 701-4933
Fax: (818) 701-4939

PB605CA THRU PB610CA

Features

- Mounting Hole For #6 Screw
- Low Forward Voltage
- Any Mounting Position
- Silver Plated Copper Leads
- Surge Overload Rating Of 125 Amps

Maximum Ratings

- Operating Temperature: -55°C to +125°C
- Storage Temperature: -55°C to +150°C

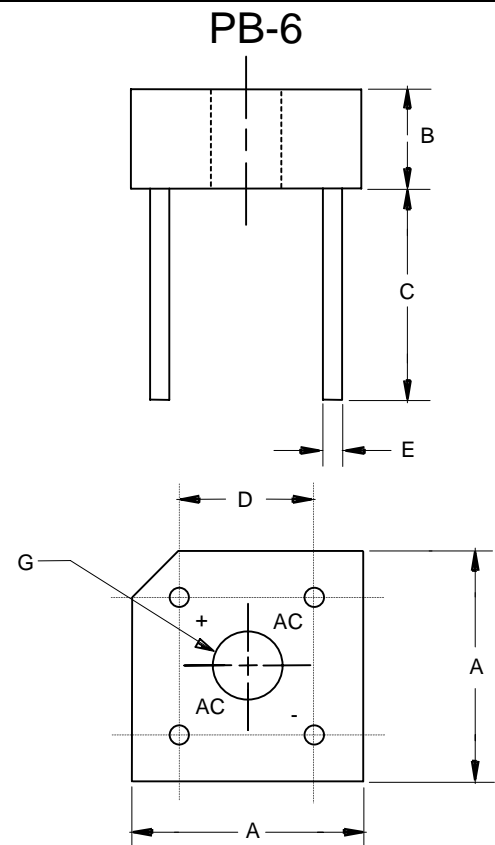
Microsemi Catalog Number	Maximum DC Blocking Voltage	Maximum RMS Voltage	Minimum Controlled Avalanche Voltage	Maximum Controlled Avalanche Voltage
PB605CA	50V	35V	100V	550V
PB61CA	100V	70V	150V	600V
PB62CA	200V	140V	250V	700V
PB64CA	400V	280V	450V	900V
PB66CA	600V	420V	650V	1100V
PB68CA	800V	560V	850V	1300V
PB610CA	1000V	700V	1050V	1500V

Electrical Characteristics @ 25°C Unless Otherwise Specified

Average Forward Current	$I_{F(AV)}$	6.0A	$T_J = 50^\circ\text{C}$
Peak Forward Surge Current	I_{FSM}	125A	8.3ms, half sine
Maximum Forward Voltage Drop Per Element	V_F	1.0V	$I_{FM} = 3.0\text{A}; T_J = 25^\circ\text{C}^*$
Maximum DC Reverse Current At Rated DC Blocking Voltage	I_R	10 μA 0.2mA	$T_J = 25^\circ\text{C}$ $T_J = 100^\circ\text{C}$

*Pulse test: Pulse width 300 μsec , Duty cycle 1%

6 Amp Bridge Rectifier Controlled Avalanche 50 to 1000 Volts

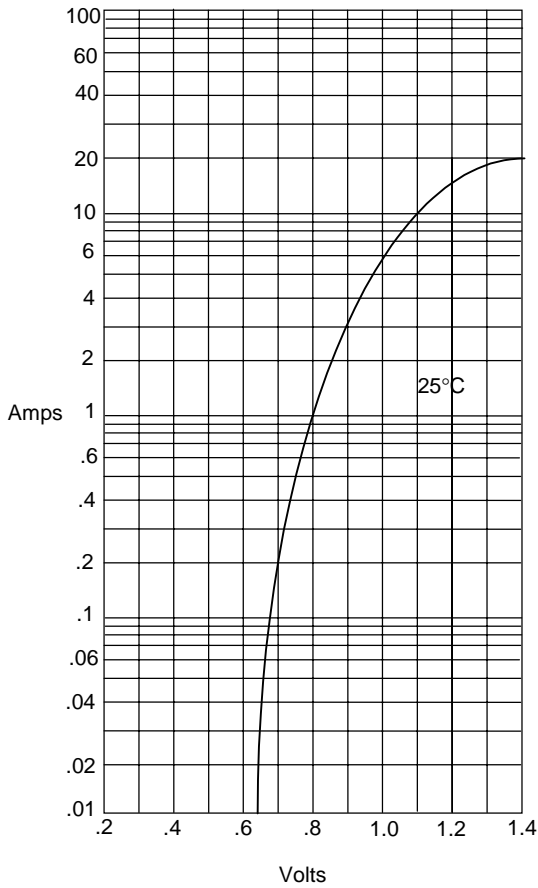


DIM	INCHES		MM		NOTE
	MIN	MAX	MIN	MAX	
A	---	.610	---	15.50	2PL
B	---	.250	---	6.33	
C	---	.750	---	19.20	
D	.405	.444	10.30	11.30	2PL
E	.040	---	1.00	---	4PL/TYP
G	.145	---	3.70	---	\varnothing

PB605CA thru PB610CA

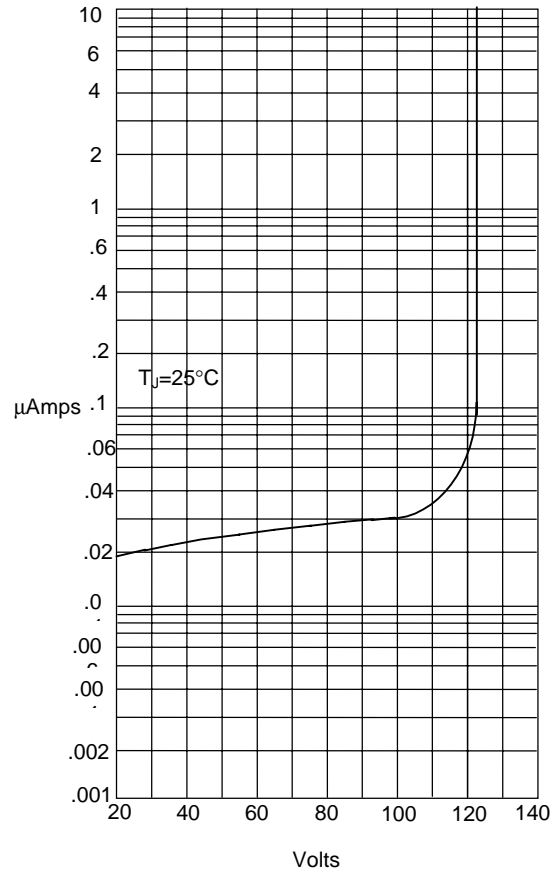


Figure 1
Typical Forward Characteristics



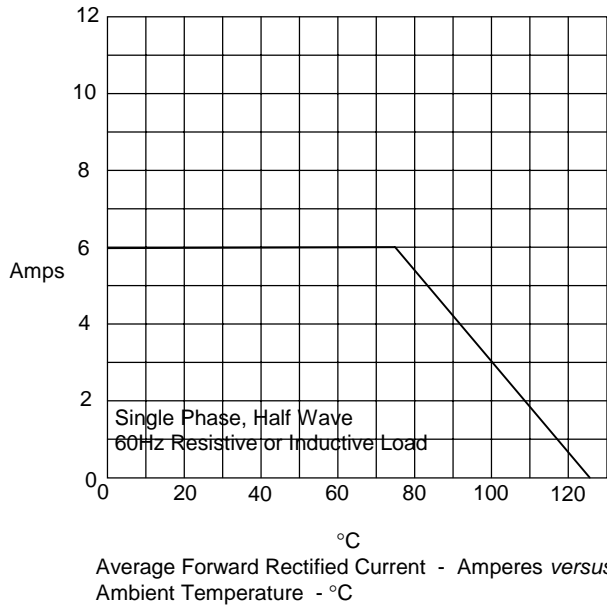
Instantaneous Forward Current - Amperes *versus*
Instantaneous Forward Voltage - Volts

Figure 2
Typical Reverse Characteristics



Instantaneous Reverse Leakage Current - MicroAmperes *versus*
Percent Of Rated Peak Reverse Voltage - Volts

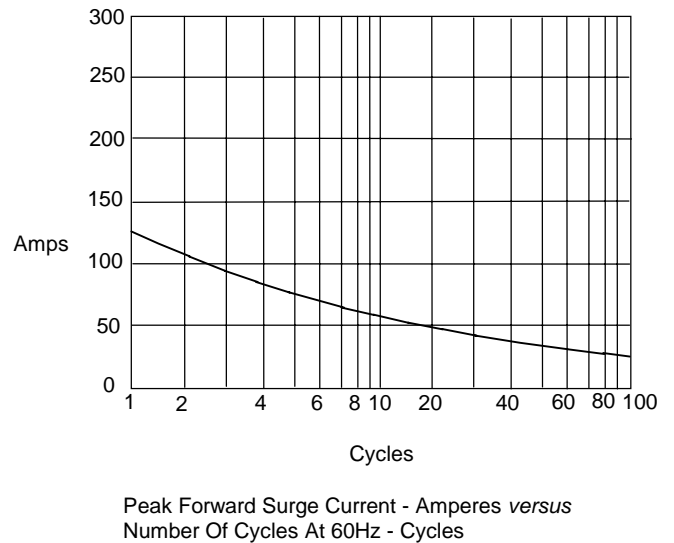
Figure 3
Forward Derating Curve



Single Phase, Half Wave
60Hz Resistive or Inductive Load

Average Forward Rectified Current - Amperes *versus*
Ambient Temperature - °C

Figure 4
Peak Forward Surge Current



Peak Forward Surge Current - Amperes *versus*
Number Of Cycles At 60Hz - Cycles