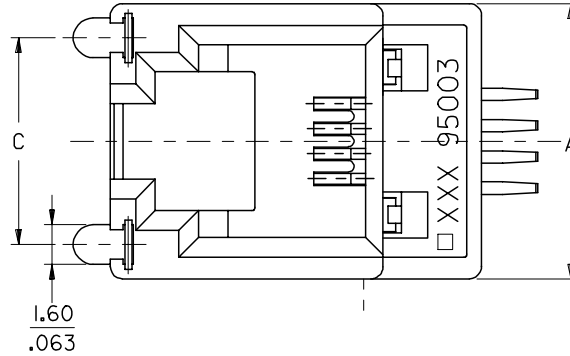
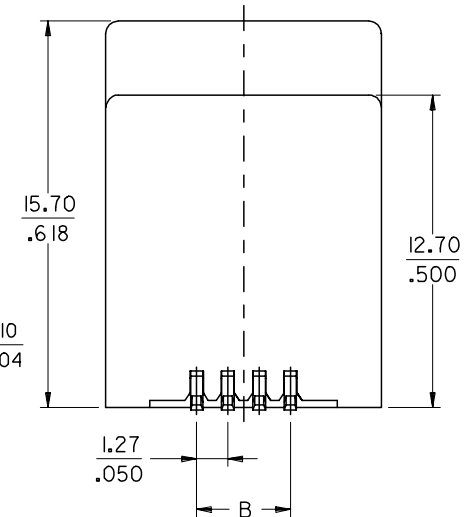
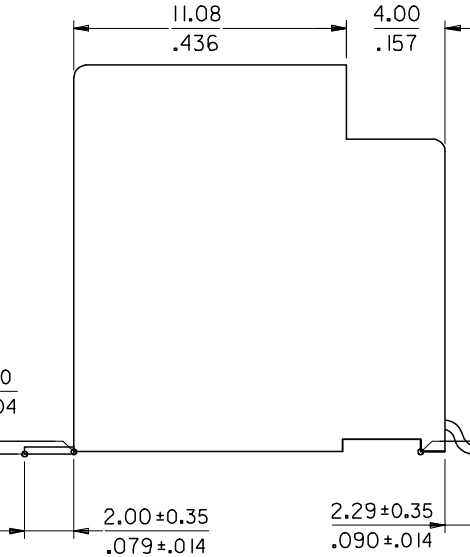


PART. NO.	HOUSING SIZE	LOADED CKTS	TOOLED	PACKAGING	A	B ±0.15 ±.006	C
85510-5003	8	8	YES	TAPE			
85510-5020	8	8	YES	BLISTER ON REEL 13"	15.24 .600	8.89 .350	10.77 .424
85510-5028	8	8	YES	BLISTER ON REEL 22"			
85510-5005	6	6	YES	TAPE			
85510-5019	6	6	YES	BLISTER ON REEL 13"	13.21 .520	6.35 .250	9.95 .392
85510-5027	6	6	YES	BLISTER ON REEL 22"			
85510-5013	6	4	NO	TAPE			
85510-5018	6	4	NO	BLISTER ON REEL 13"	13.21 .520	3.81 .150	9.95 .392
85510-5026	6	4	YES	BLISTER ON REEL 22"			
85510-5007	4	4	YES	TAPE			
85510-5017	4	4	YES	BLISTER ON REEL 13"	11.18 .440	3.81 .150	8.40 .331
85510-5025	4	4	YES	BLISTER ON REEL 22"			



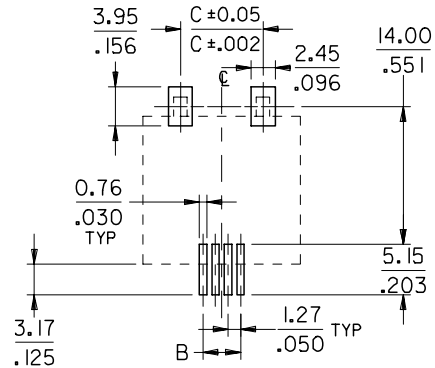
**NOTES:**

- MATERIAL:
  - HOUSING: LCP FIBER GLASS FILLED UL 94-V0, COLOR BLACK.
  - TERMINAL: BRASS PLATED WITH: 0.00127/.000050 MIN. GOLD IN CONTACT AREA, 0.00190/.000075 MIN PURE TIN IN TAIL AREA, BOTH OVER 0.00127/.000050 MIN NICKEL OVERALL.
  - SOLDER NAILS: BRASS PRE-PLATED WITH 0.0020/.000078 MIN TIN
- JACK FOR MATING WITH F.C.C.68 PLUGS (MOLEX 95075 SERIES).
- PRODUCT SPECIFICATION PS-95503-001.
- APPLICATION SPECIFICATION: AS-85513-001
- PACKAGING SPECIFICATION: PK-85510 SHEET 1 (TAPE ON REEL) SHEET 2 (BLISTER ON REEL 13") SHEET 3 (BLISTER ON REEL 22")
- COPLANARITY OF SIGNAL LEADS: 0.10 MAX
- MANUFACTURING I.D CAN BE EITHER MG, MXF OR MXL.



**PCB MOUNTING PATTERNS**

(SEE FROM COMPONENT SIDE)  
(SCALE 2:1)



(ONLY 4/4 VERSION PADS SHOWN)

CORRECTED TERM MATL	2007/07/23	DESCRIPTION
EC NO: E2008-0031	2007/07/23	
DRWN:DBYRNES	2007/07/23	
CHKD:		
APPR:EDMAGONY	2007/07/26	

QUALITY SYMBOLS	▽=0
	∇=0

GENERAL TOLERANCES (UNLESS SPECIFIED)	mm	INCH
4 PLACES	± ---	± ---
3 PLACES	± ---	± .006
2 PLACES	± 0.15	± .010
1 PLACE	± 0.25	± ---
ANGULAR ± 2 °		
DRAFT WHERE APPLICABLE MUST REMAIN WITHIN DIMENSIONS		

DIMENSION STYLE		MM/IN
DRAWN BY	DATE	TITLE
FB	95/11/21	TOP ENTRY SMT JACKS
CHECKED BY	DATE	4/4 6/6 AND 8/8 POS.
TB	95/11/21	WITH SOLDER NAILS
APPROVED BY	DATE	
FB	95/11/21	
MATERIAL NO.	DOCUMENT NO.	SHEET NO.
	SD-85510-002	1 OF 1
THIS DRAWING CONTAINS INFORMATION THAT IS PROPRIETARY TO MOLEX INCORPORATED AND SHOULD NOT BE USED WITHOUT WRITTEN PERMISSION		

SCALE	DESIGN UNITS	THIRD ANGLE PROJECTION
5:1	METRIC	
MOLEX INCORPORATED		