

# .156" (3.96mm) Series 181, 281, 183, 283 Single Readout Card Edge Connector

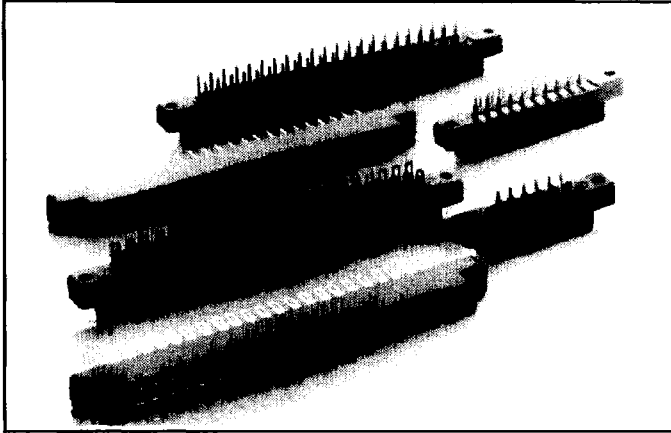


.156 (3.96) Centers

Card Edge

Series 181, 281, 183, 283

SINGLE READOUT



## Features

- Single and dual readout bifurcated bellows contacts with maximum wiping area
- Will accept printed circuit board thickness variation of .054 to .070 (1.37 to 1.78)
- Terminal row spacing, .140 & .200 (3.56 & 5.08) spacing available
- In and between contact polarization
- Meets performance criteria of MIL-C-21097

## Specifications

**Operating Voltage:** 600 VAC rms at sea level

**Current Rating:** 5 Amps continuous

**Contact Resistance:** 6 milliohms, 30 millivolts at rated current

**Contact Material:** Copper alloy

**Contact Plating:** See part number coding

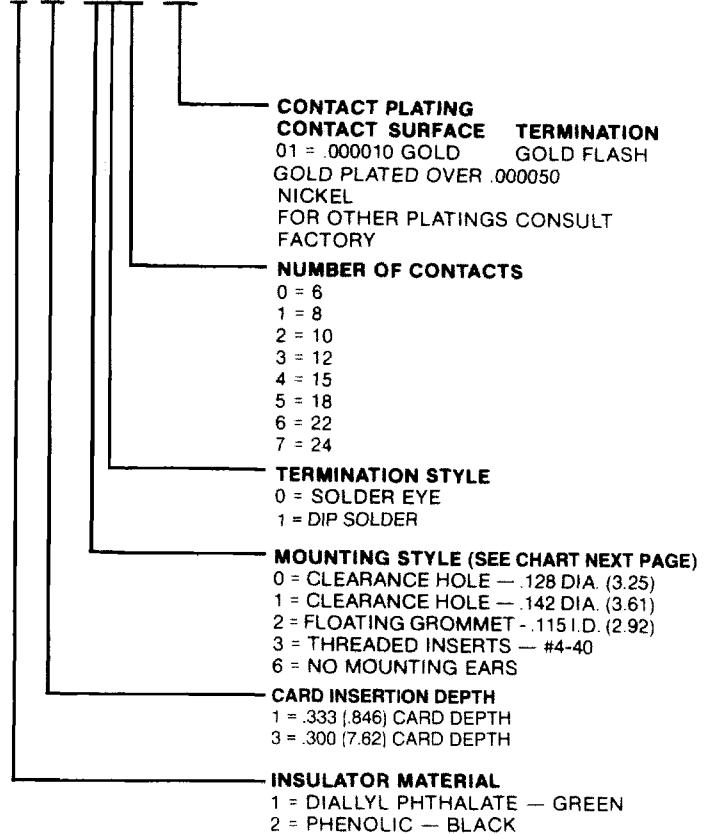
**Insulator Material:** Diallyl phthalate, glass filled, flame resistant per MIL-M-14, Type SDG-F, green; phenolic, glass filled per MIL-M-14, Type MFH, black

**In Contact Polarization Keys:** P/N 116-1003-01, order separately

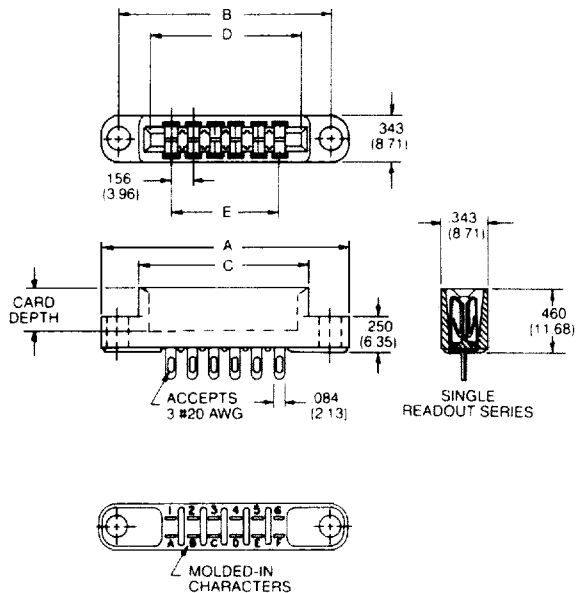
**Between Contact Polarization Keys:** P/N 116-1056-00, order separately

## PART NUMBER CODING

**X8X - XXX - 01**

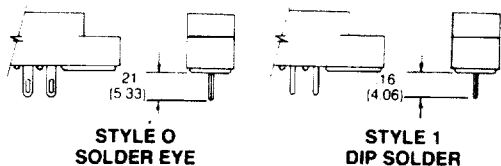


# Single Readout

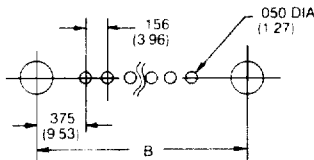


PART NUMBER	NUMBER OF CONTACTS	NUMBER				
		A	B	C	D	E
X8X-XX0-XX	6	1.785 (45.34)	1.531 (38.89)	1.239 (31.47)	1.099 (27.91)	.781 (19.84)
X8X-XX1-XX	8	2.097 (53.26)	1.843 (46.81)	1.551 (39.40)	1.411 (35.84)	1.093 (27.76)
X8X-XX2-XX	10	2.410 (61.21)	2.156 (54.76)	1.864 (47.35)	1.724 (43.79)	1.406 (35.71)
X8X-XX3-XX	12	2.722 (69.14)	2.468 (62.69)	2.176 (55.27)	2.036 (51.71)	1.718 (43.64)
X8X-XX4-XX	15	3.191 (81.05)	2.937 (74.60)	2.645 (67.18)	2.505 (63.63)	2.187 (55.55)
X8X-XX5-XX	18	3.659 (92.94)	3.405 (86.49)	3.113 (79.07)	2.973 (75.51)	2.655 (67.44)
X8X-XX6-XX	22	4.284 (108.81)	4.030 (102.36)	3.738 (94.95)	3.598 (91.39)	3.280 (83.31)
X8X-XX7-XX	24	4.597 (116.76)	4.343 (110.31)	4.051 (102.90)	3.911 (99.34)	3.593 (91.26)

ALL DIMENSIONS ARE IN INCHES  
DIMENSIONS IN ( ) ARE IN MILLIMETERS

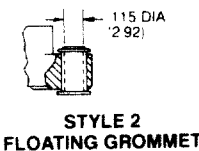
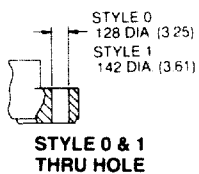


**SINGLE READOUT TERMINATION STYLE**

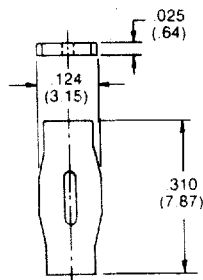


**MOUNTING PATTERN  
SINGLE READOUT  
DIP STYLE TERMINALS**

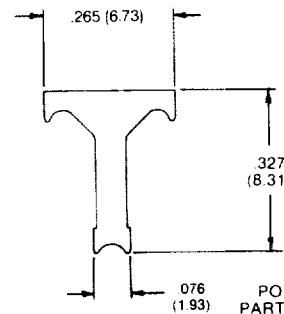
# Single and Dual Readout



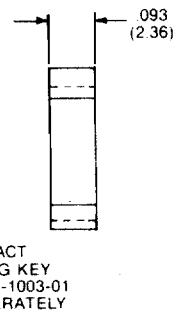
**MOUNTING STYLE**



**BETWEEN CONTACT  
POLARIZING KEY  
PART NO. 116-1056-00  
ORDER SEPARATELY**



**POLARIZING KEYS**



**IN CONTACT  
POLARIZING KEY  
PART NO. 116-1003-01  
ORDER SEPARATELY**