

**SNAP-N-SEAL®
“F” SERIES MALE
ENVIRONMENTALLY
SEALED CONNECTORS**

Super-Premium Performance

LRC Snap-N-Seal® connectors are environmentally sealed to protect drops from harsh environments. Through a unique 360° compression process, Snap-N-Seal® connectors also offers the signal leakage protection required for today's systems.

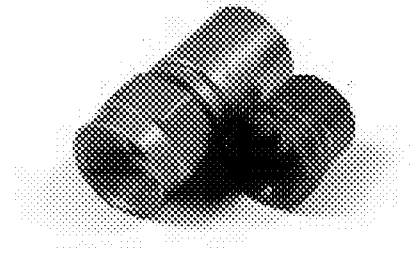


FIG. A

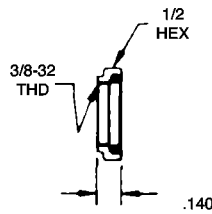


FIG. B

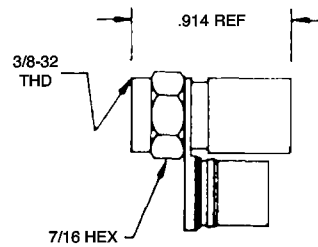


FIG. C

**Ordering Information —
Snap-N-Seal® “F” Male, Environmentally Sealed Connectors**

PART NUMBER	PG	POST L.D.	SLEEVE L.D.	TOOL	DIM A
SNS59	C	.154	.253	1 or 2+3	-
SNS59NS	B+C	.154	.253	1 or 2+3	-
SNS59TP275	A+C	.154	.253	1 or 2+3	.275
SNS59TP450	A+C	.154	.253	1 or 2+3	.450
SNS59QS	C	.154	.275	1 or 2+3	-
SNS59QSNS	B+C	.154	.275	1 or 2+3	-
SNS59QSTP275	A+C	.154	.275	1 or 2+3	.275
SNS59QSTP450	A+C	.154	.275	1 or 2+3	.450
SNS59HEC	C	.154	.290	1 or 2+3	-
SNS59HECNS	B+C	.154	.290	1 or 2+3	-
SNS59HECTP275	A+C	.154	.290	1 or 2+3	.275
SNS59HECTP450	A+C	.154	.290	1 or 2+3	.450
SNS6	C	.191	.290	1 or 2+3	-
SNS6NS	B+C	.191	.290	1 or 2+3	-
SNS6TP275	A+C	.191	.290	1 or 2+3	.275
SNS6TP450	A+C	.191	.290	1 or 2+3	.450
SNS6QS	C	.191	.315	1 or 2+3	-
SNS6QSNS	B+C	.191	.315	1 or 2+3	-
SNS6QSTP275	A+C	.191	.315	1 or 2+3	.275
SNS6QSTP450	A+C	.191	.315	1 or 2+3	.450

Tool: 1 = IT1000, 2 = CST596, 3 = SNSUTL. Patent #4,902,246

Dimensions shown are for reference only. Dimensions are in inches.

Super-Premium Performance

**SNAP-N-SEAL®
“F” SERIES MALE
ENVIRONMENTALLY
SEALED CONNECTORS**

LRC Snap-N-Seal® connectors are environmentally sealed to protect drops from harsh environments. Through a unique 360° compression process, Snap-N-Seal® connectors also offers the signal leakage protection required for today's systems.

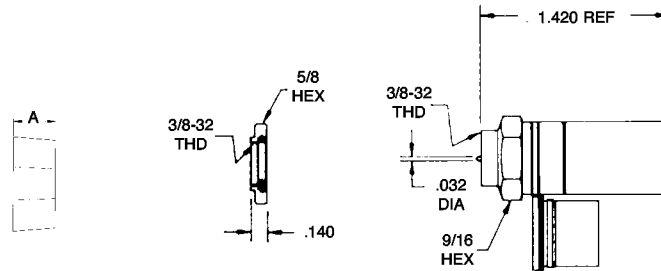


FIG. A

FIG. B

FIG. C

**Ordering Information —
Snap-N-Seal® “F” Male, Environmentally Sealed Connectors**

PART NUMBER	FIG.	POST I.D.	SLEEVE I.D.	TOOL	DIMENSION A
SNS7B	C	.238	.340	1+2	-
SNS7BNS	B+C	.238	.340	1+2	-
SNS7BTP275	A+C	.238	.340	1+2	.275
SNS7BTP450	A+C	.238	.340	1+2	.450
SNS7BQ	C	.238	.355	1+2	-
SNS7BQNS	B+C	.238	.355	1+2	-
SNS7BQTP275	A+C	.238	.355	1+2	.275
SNS7BQTP450	A+C	.238	.355	1+2	.450
SNS7AS	C	.248	.356	1+2	-
SNS7ASNS	B+C	.248	.356	1+2	-
SNS7ASTP275	A+C	.248	.356	1+2	.275
SNS7ASTP450	A+C	.248	.356	1+2	.450
SNS11AS	C	.295	.415	1+2	-
SNS11ASNS	B+C	.295	.415	1+2	-
SNS11ASTP275	A+C	.295	.415	1+2	.275
SNS11ASTP450	A+C	.295	.415	1+2	.450

Tool: 1 = CST11, 2 = L3011B. Patent #4,902,246

Dimensions shown are for reference only. Dimensions are in inches.

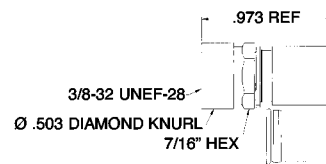
Super-Premium Performance

**SNAP-N-SEAL®
SPLICE CONNECTORS
ENVIRONMENTALLY SEALED**

**Ordering Information —
Snap-N-Seal® “F” Male, Indoor Connectors**

PART NUMBER	POST I.D.	SLEEVE I.D.	TOOL
SNS59ID	.154	.253	1 or 2+3
SNS59QSID	.154	.275	1 or 2+3
SNS59HECID	.154	.290	1 or 2+3
SNS6ID	.191	.290	1 or 2+3
SNS6QSID	.191	.315	1 or 2+3

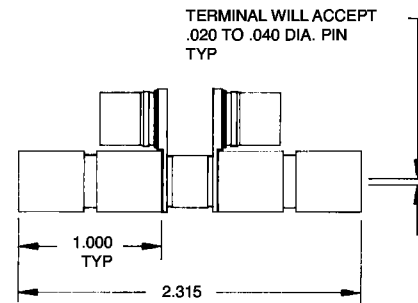
Tool: 1 = IT1000, 2 = CST596, 3 = SNSUTL



Ordering Information — Snap-N-Seal® Splice

PART NUMBER	POST I.D.	SLEEVE I.D.	TOOL
81SNS59	.154	.253	1+2
81SNS59QS	.154	.275	1+2
81SNS6	.191	.290	1+2
81SNS6QS	.191	.315	1+2

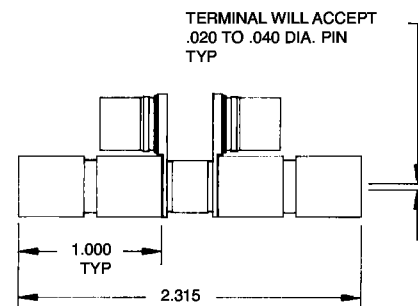
Tool: 1 = CST596, 2 = SNSUTL



Ordering Information — Snap-N-Seal® Splice, Delta

PART NUMBER	POST I.D.	SLEEVE I.D.	TOOL
81SNS5959QS	59/59 Quad		1+2
81SNS596QS	59/6 Quad		1+2
81SNS659	6/59		1+2
81SNS659QS	6/59 Quad		1+2
81SNS66QS	6/6 Quad		1+2
81SNS6QS59QS	6 Quad/59 Quad		1+2

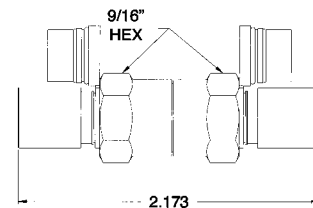
Tool: 1 = CST596, 2 = SNSUTL



Ordering Information — Snap-N-Seal® Splice, Auto Seize

PART NUMBER	POST I.D.	SLEEVE I.D.	TOOL
SNS8159AS	.154	.253	1+2
SNS816AS	.191	.290	1+2

Tool: 1 = CST596, 2=SNSUTL

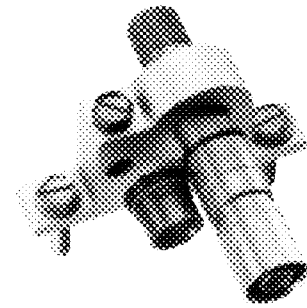


Dimensions shown are for reference only. Dimensions are in inches.

Super-Premium Performance

**SNAP-N-SEAL®
GROUND BLOCK & CABLE TO
“F” FEMALE CONNECTORS
ENVIRONMENTALLY SEALED**

Snap-N-Seal® Ground Blocks are made from high quality, die cast material incorporating the Snap-N-Seal® feature.

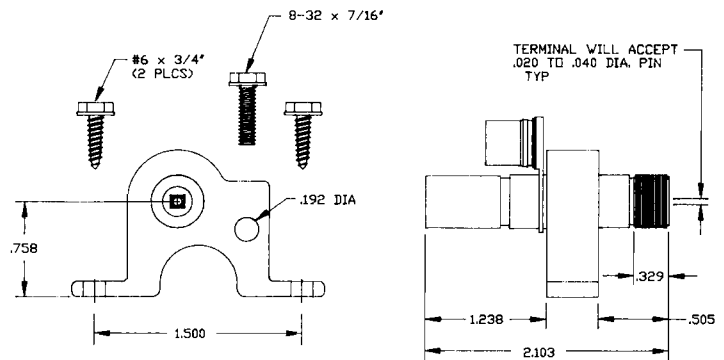


Ordering Information — Snap-N-Seal® Ground Block

PART NUMBER	POST ID	SHRIMP ID	TOOL
GB59SNS	.154	.253	1+2
GB59QSNS	.154	.275	1+2
GB6SNS	.191	.290	1+2
GB6QSNS	.191	.315	1+2

Tool: 1 = CST596, 2 = SNSUTL

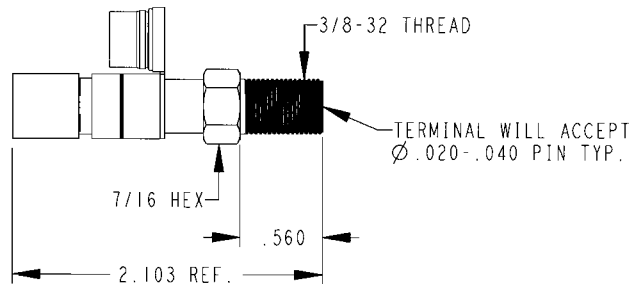
All Supplied Screws Have Slotted - 1/4" Hex Combination Head



**Ordering Information —
Snap-N-Seal® Cable to “F” Female Connectors**

PART NUMBER	POST ID	SHRIMP ID	TOOL
SNS59FF	.154	.253	1+2
SNS59QSFF	.154	.275	1+2
SNS6FF	.191	.290	1+2
SNS6QSFF	.191	.315	1+2

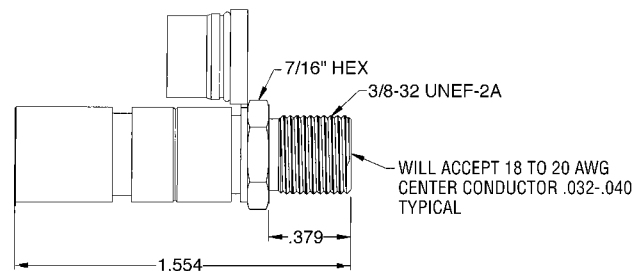
Tool: 1 = CST596, 2 = SNSUTL



**Ordering Information —
Snap-N-Seal® Cable to “F” Female,
Precision Connector**

PART NUMBER	POST ID	SHRIMP ID	TOOL
SNS6KF81	.191	.290	1+2

Tool: 1 = CST596, 2 = SNSUTL

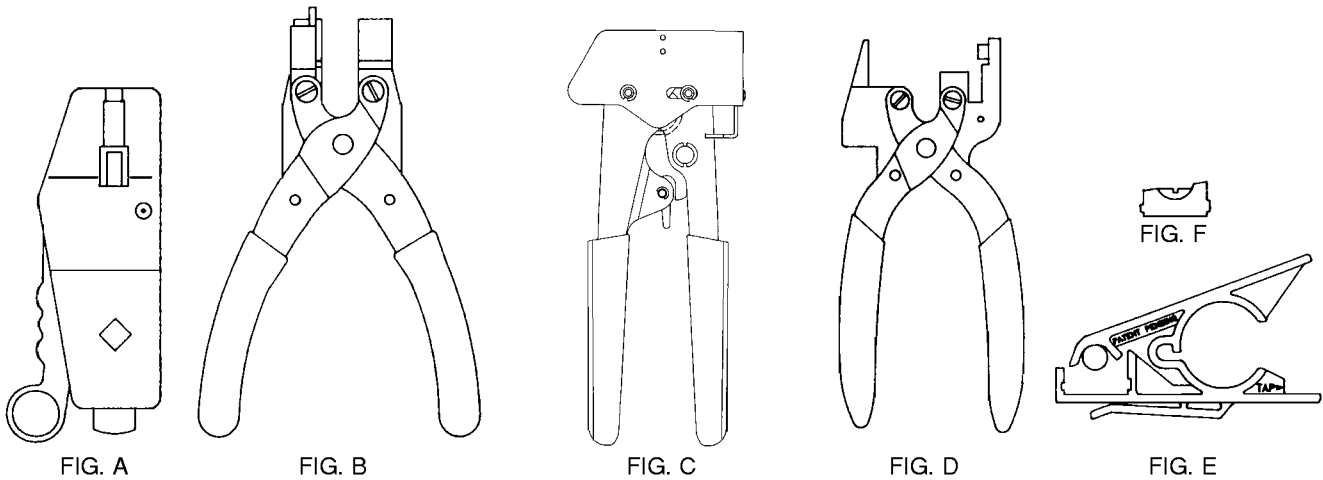
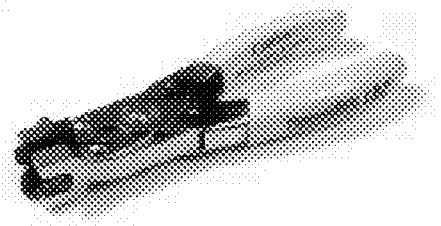


Dimensions shown are for reference only. Dimensions are in inches.

**SNAP-N-SEAL®
INSTALLATION TOOLS**

Super-Premium Performance

SNSUTL installation tool is used for all Snap-N-Seal® 59 and 6 series connector products. Its compact design makes it easy to use.



Ordering Information — Snap-N-Seal® Preparation/Installation Tools

PART NUMBER	FIG.	DESCRIPTION	USE
IT1000*	A	Strips & Installs	Series 59, 59QS, 59HEC, 6, 6QS
SNSUTL	B	Installs, Non-Ratchet	Series 59, 59QS, 59HEC, 6, 6QS
SNSIT	C	Installs, Ratchet	Series 59, 59QS, 59HEC, 6, 6QS
L3011B	D	Installs	Series 7, 7QS, 11, 11QS
CST11	E	Strips	Series 7, 7QS, 11, 11QS
CST596	E	Strips	Series 59, 59QS, 59HEC, 6, 6QS
RM11	F	Replacement Module	CST11
RM596	F	Replacement Module	CST596
IT10002	-	Replacement Blade Cassette	IT1000

*For use with Snap-N-Seal® "F" Male Series Only

Dimensions shown are for reference only. Dimensions are in inches.

Super-Premium Performance

**SNAP-N-SEAL®
ACCESSORIES, SECURITY SHIELDS
& INSTALLATION TOOLS**

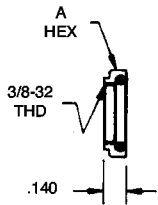


FIG. A



FIG. B

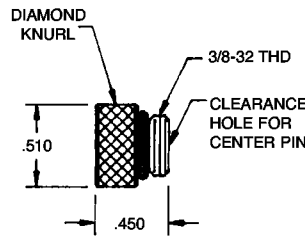


FIG. C

Ordering Information — Snap-N-Seal® Accessories

PART NUMBER	PG.	DESCRIPTION	USE	DIM.	
				A	B
NS500	A	Nut Seal	All 59 & 6 Connectors	1/2	-
NS625	A	Nut Seal	All 7 & 11 Connectors	5/8	-
TP275	B	Thread Protector	3/8 Threaded Ports	.275	-
TP450	B	Thread Protector	3/8 Threaded Ports	.450	-
SNS375P	C	Weather Plug	All "F" Male Connectors	-	-

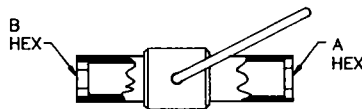


FIG. A

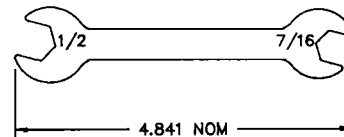


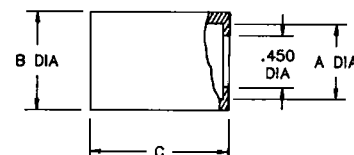
FIG. B

Ordering Information — Snap-N-Seal® Installation/Security Tool

PART NUMBER	PG.	DESCRIPTION	DIMENSION	
			A	B
SSTSNS	A	Security Shield Tool 59 & 6	7/16	1/2
SSTSNS11	A	Security Shield Tool 7 & 11	9/16	5/8
W5437	B	Combination Wrench	-	-

Ordering Information — Snap-N-Seal® Security Shield

PART NUMBER	MATERIAL	TOOL	DIMENSION		
			A	B	C
FCSSNS	Plastic	SSTSNS	.658	.858	1.230
FCSSNS11	Plastic	SSTSNS11	.803	.995	1.766



Dimensions shown are for reference only. Dimensions are in inches.