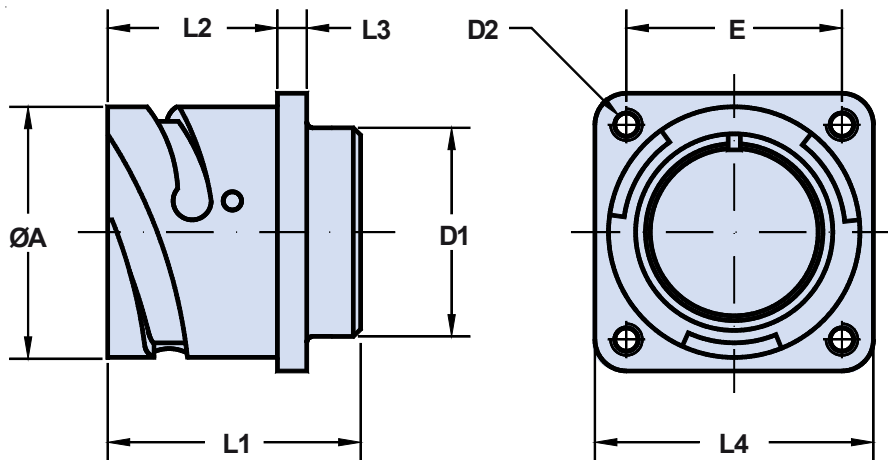
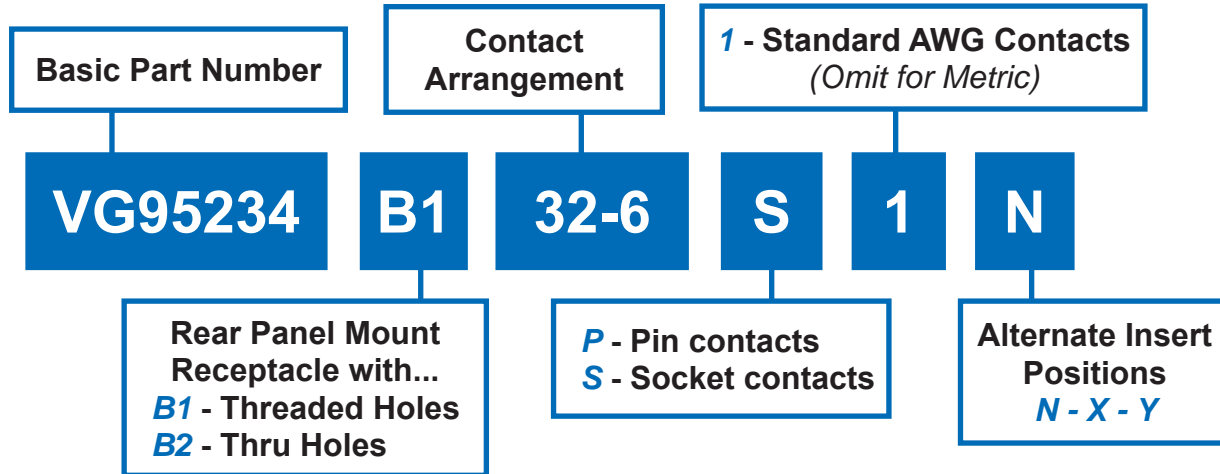


**VG95234 B1 and VG95234 B2**  
Rear Panel Wall Mount Receptacle  
with Threaded (B1) and Thru-Holes (B2)



**APPLICATION NOTES**

1. Rear panel mount square flange receptacle—no accessory threads. Threaded or through mounting holes.
2. Standard crimp contact material consists of copper alloy with silver plating. Please see pages 16-17 for additional contact information.
3. Insert arrangements IAW VG95234. Please see pages 10-15.
4. Standard insert is synthetic rubber, oil and low temperature resistant (-55°C to +125°C) IAW MIL-R-3065.
5. Stainless steel and marine bronze shells are available in Series ITS products. Please consult factory.
6. All dimensions are metric unless otherwise noted.

**VG95234 B1 and VG95234 B2  
Rear Panel Wall Mount Receptacle  
with Threaded (B1) and Thru-Holes (B2)**



DIMENSIONS										
Shell Size	ØA +0 -0.15	D1 Max	D2		E ±0.1	L1 ±0.3	L2 +0.4 -0	L3 ±0.2	L4 ±0.3	Weight gr. Max
			B1	B2 H13						
10 SL	18.2	16.2	M4	3.2	18.2	24.7	18.2	2.8	25.4	14
14 S	24.6	19.2	M4	3.2	23.0	24.7	18.2	3.2	30.0	21
16 S	27.4	22.4	M4	3.2	24.6	24.7	18.2	3.2	32.5	22
16	27.4	22.4	M4	3.2	24.6	33.8	23.05	3.2	32.5	27
18	30.8	25.6	M4	3.2	27.0	33.8	23.05	4.0	35.0	33
20	34.2	29.0	M4	3.2	29.4	33.8	23.05	4.0	38.0	37
22	37.4	32.2	M4	3.2	31.8	33.8	23.05	4.0	41.0	42
24	40.9	35.3	M4	3.7	35.9	33.8	23.05	4.0	44.5	48
28	46.7	41.4	M5	3.7	39.7	33.8	24.05	4.0	50.8	58
32	53.4	47.8	M5	4.3	44.5	33.8	24.05	4.0	57.0	72
36	59.6	54.1	M5	4.3	49.2	33.8	24.05	4.0	63.5	84

MATERIALS	
SHELLS	INSERTS (Temperature Range)
Aluminum Alloy IAW QQ-A-591 Shells	High Insulation Synthetic Rubber -55°C/+125°C
	CRIMP CONTACTS
	Copper Alloy with Silver Plating Over Nickel

STANDARD FINISH (For QQ-A-591 Aluminum Shells)	
Requirements	Cadmium with Olive Drab Passivation IAW QQ-P-416
Thermal Shock	-55°C + 125°C
Salt Spray After Thermal Shock	500 hour
Electrical Conductivity	Very Good
Abrasion Resistance	Very Good