

Monolithic crystal filter

MQF10.7-1500/23



Application

- 8 pol filter
- i.f.- filter
- use in mobile and stationary transceivers

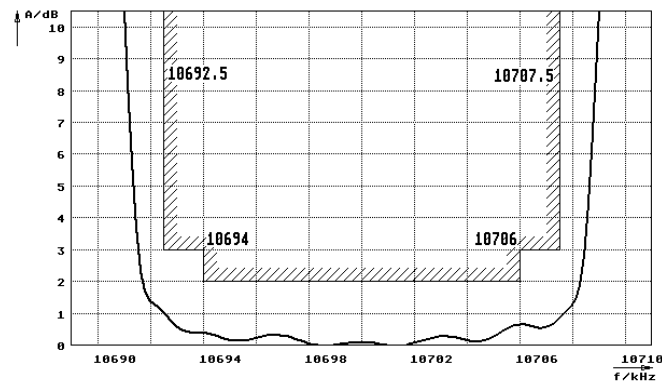
Limiting values		Unit	Value
Nominal frequency	f_0	MHz	10.7
Insertion loss		dB	< 3.5
Pass band at 3.0dB		kHz	$\pm > 7.5$
Ripple in pass band	$f_0 \pm 6$ kHz	dB	< 2.0
Stop band attenuation	$f_0 \pm 17$ kHz	dB	> 70
	$f_0 \pm 22$ kHz	dB	> 90
Alternate attenuation	$f_0 \pm 22 \dots 1000$ kHz	dB:	> 90

Terminating impedance Z			
R1 C1		Ohm/pF	4700 -0.50
R2 C2		Ohm/pF	4700 -0.50

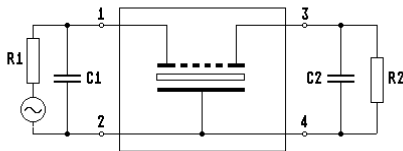
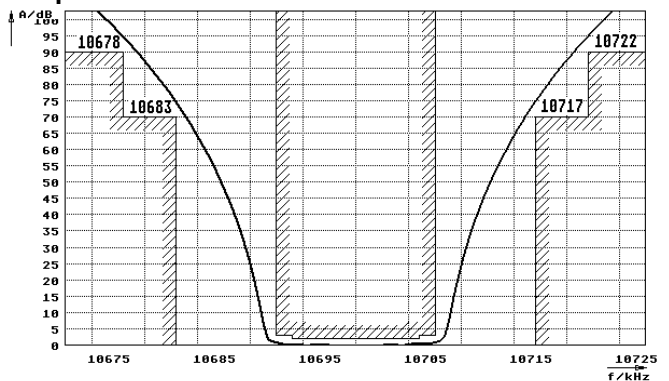
Operating temp. range	°C	-20... +70
Storage temp. range	°C	-35... +85
Environment conditions		according to CF001

Characteristics MQF10.7-1500/23

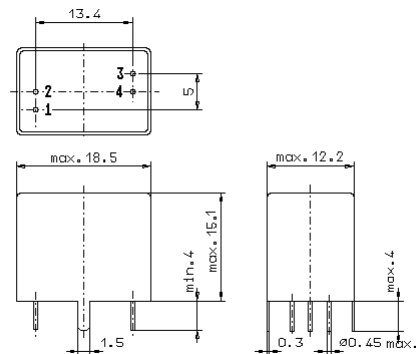
Pass band



Stop band



- Pin connections:
- 1 Input
 - 2 Ground
 - 3 Output
 - 4 Ground



GV5.1