

**SPECIFICATIONS**

**Mechanical**

**Contact Retention Force:** 1.80kgf min.  
**Mating Force:** 340gf max. per Contact Pair  
**Unmating Force:** 28gf min. per Contact Pair  
**Durability:** 500 Cycles

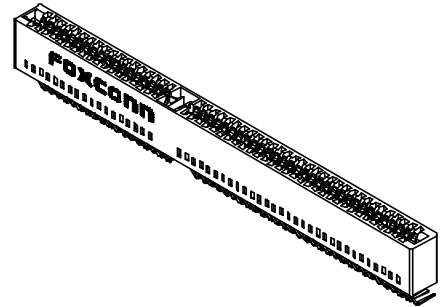
**Electrical**

**Current Rating:** 3A max.  
**Current Voltage:** 250V  
**Contact Resistance:** 15mW max. initial  
**Dielectric Withstanding Voltage:** 1000V  
**Insulation Resistance:** 5000MW min.

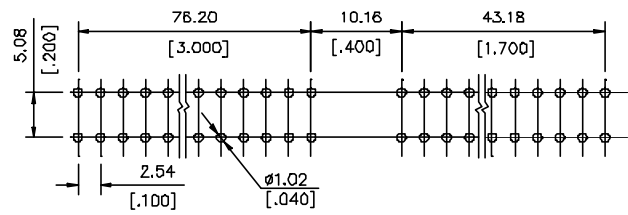
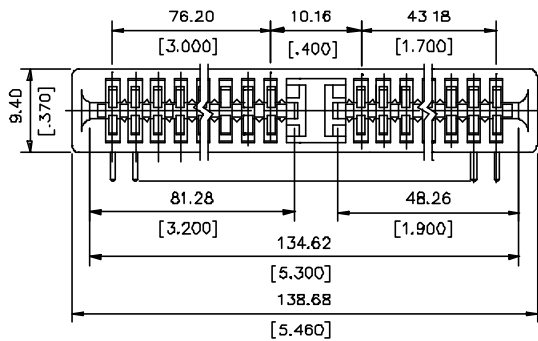
**Physical**

**Housing:** Thermoplastic, UL 94V-0 rated, in Black Color  
**Contact:** Copper alloy  
**Plating:** See "ORDERING INFORMATION"  
**Operating Temperature:** -55 to +85

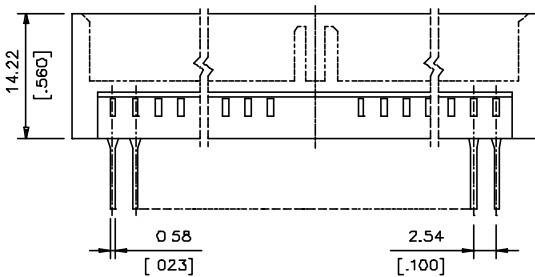
**ES Series**  
**R/A Type, Reverse Type**  
**2.54 mm [.100"] Pitch**  
**98 Pos.**



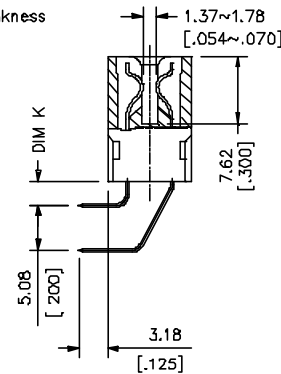
**DRAWING**



RECOMMENDED P.C.B LAYOUT



Accept P.C.B Thickness



**ORDERING INFORMATION**

PRODUCT NO.: ES 1 4 9 \* \* - TEE - \*\*

Series Prefix  
 2.54 [.100] Pitch  
 Edge Card Conn.

Termination Type  
 1=Right Angle Type

No. of Pos.  
 49=98 Pos.

Body Length  
 4=0.64 [.025]  
 5=2.16 [.085]  
 6=1.60 [.063]  
 7=2.67 [.105]  
 9=1.00 [.072]

PLATING TYPE  
 DN=Tin/Lead  
 DF=Lead Free

Extension Code

Contact Area Plating  
 1=Gold Flash  
 2=20u" Gold  
 3=30u" Gold  
 6=10u" Gold  
 7=15u" Gold

ES1499*-TEE-**-**	1.00 [.072]
ES1497*-TEE-**-**	2.67 [.105]
ES1496*-TEE-**-**	1.60 [.063]
ES1495*-TEE-**-**	2.16 [.085]
ES1494*-TEE-**-**	0.64 [.025]
P/N	DIM. K (Body Length)