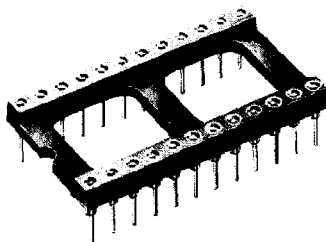
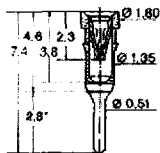


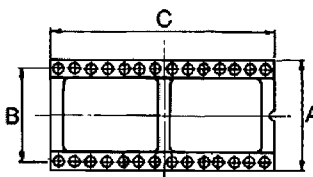
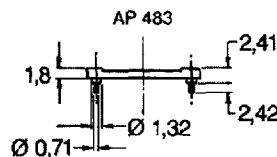
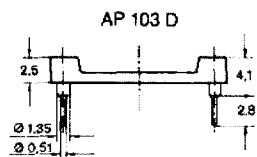
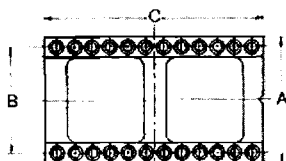
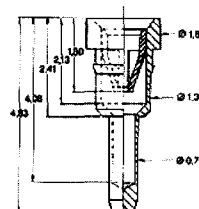
IC-sockets

with gold plated precision spring contacts
side and end stackable
open frame construction
solder version

Pitch 2.54 mm



Low profile



Part no.	No. of contacts	Quantity in tubes	Plating Pin	Clip	Dimensions (mm / inch)		
					A	B	C
AR 06-HGL ¹ -T	6	80	Gold	Gold	10,1 / 0.398	7,62 / 0.300	7,6 / 0.299
AR 06-HZL ² -T	6	80	Tin	Gold	10,1 / 0.398	7,62 / 0.300	7,6 / 0.299
AR 08-HGL-T	8	60	Gold	Gold	10,1 / 0.398	7,62 / 0.300	10,1 / 0.398
AR 08-HZL-T	8	60	Tin	Gold	10,1 / 0.398	7,62 / 0.300	10,1 / 0.398
AR 10-HGL-T	10	48	Gold	Gold	10,1 / 0.398	7,62 / 0.300	12,7 / 0.500
AR 10-HZL-T	10	48	Tin	Gold	10,1 / 0.398	7,62 / 0.300	12,7 / 0.500
AR 14-HGL-T	14	34	Gold	Gold	10,1 / 0.398	7,62 / 0.300	17,7 / 0.697
AR 14-HZL-T	14	34	Tin	Gold	10,1 / 0.398	7,62 / 0.300	17,7 / 0.697
AR 16-HGL-T	16	30	Gold	Gold	10,1 / 0.398	7,62 / 0.300	20,3 / 0.799
AR 16-HZL-T	16	30	Tin	Gold	10,1 / 0.398	7,62 / 0.300	20,3 / 0.799
AR 18-HGL-T	18	27	Gold	Gold	10,1 / 0.398	7,62 / 0.300	22,8 / 0.898
AR 18-HZL-T	18	27	Tin	Gold	10,1 / 0.398	7,62 / 0.300	22,8 / 0.898
AR 20-HGL-T	20	24	Gold	Gold	10,1 / 0.398	7,62 / 0.300	25,4 / 1.000
AR 20-HZL-T	20	24	Tin	Gold	10,1 / 0.398	7,62 / 0.300	25,4 / 1.000
AR 22-HGL-T	22	22	Gold	Gold	12,7 / 0.500	10,16 / 0.400	27,9 / 1.098
AR 22-HZL-T	22	22	Tin	Gold	12,7 / 0.500	10,16 / 0.400	27,9 / 1.098
AR 24-HGL-T	24	20	Gold	Gold	17,7 / 0.697	15,24 / 0.600	30,4 / 1.197
AR 24-HZL-T	24	20	Tin	Gold	17,7 / 0.697	15,24 / 0.600	30,4 / 1.197
AR 24-HGL7-T	24	20	Gold	Gold	10,1 / 0.398	7,62 / 0.300	30,4 / 1.197
AR 24-HZL7-T	24	20	Tin	Gold	10,1 / 0.398	7,62 / 0.300	30,4 / 1.197
AR 28-HGL-T	28	17	Gold	Gold	17,7 / 0.697	15,24 / 0.600	35,5 / 1.398
AR 28-HZL-T	28	17	Tin	Gold	17,7 / 0.697	15,24 / 0.600	35,5 / 1.398
AR 28-HGL7-T	28	17	Gold	Gold	10,1 / 0.398	7,62 / 0.300	35,5 / 1.398
AR 28-HZL7-T	28	17	Tin	Gold	10,1 / 0.398	7,62 / 0.300	35,5 / 1.398
AR 32-HGL-T	32	15	Gold	Gold	17,7 / 0.697	15,24 / 0.600	40,6 / 1.598
AR 32-HZL-T	32	15	Tin	Gold	17,7 / 0.697	15,24 / 0.600	40,6 / 1.598
AR 40-HGL-T	40	12	Gold	Gold	17,7 / 0.697	15,24 / 0.600	50,8 / 2.000
AR 40-HZL-T	40	12	Tin	Gold	17,7 / 0.697	15,24 / 0.600	50,8 / 2.000
AR 48-HGL-T	48	10	Gold	Gold	17,7 / 0.697	15,24 / 0.600	60,9 / 2.398
AR 48-HZL-T	48	10	Tin	Gold	17,7 / 0.697	15,24 / 0.600	60,9 / 2.398
AR 64-HGL	64		Gold	Gold	25,4 / 1.000	22,86 / 0.900	81,2 / 3.197
AR 64-HZL	64		Tin	Gold	25,4 / 1.000	22,86 / 0.900	81,2 / 3.197

Part no.	No. of contacts	Quantity in tubes	Plating Pin	Clip	Dimensions (mm / inch)		
					A	B	C
AR 14-HZL/LP	14	34	Tin	Gold	10,1 / 0.398	7,62 / 0.300	17,7 / 0.697
AR 16-HZL/LP	16	30	Tin	Gold	10,1 / 0.398	7,62 / 0.300	20,3 / 0.799
AR 18-HZL/LP	18	27	Tin	Gold	10,1 / 0.398	7,62 / 0.300	22,8 / 0.898
AR 24-HZL/7 LP	24	20	Tin	Gold	10,1 / 0.398	7,62 / 0.300	30,4 / 1.197
AR 24-HZL/LP	24	20	Tin	Gold	17,7 / 0.697	15,24 / 0.600	30,4 / 1.197
AR 28-HZL/LP	28	17	Tin	Gold	17,7 / 0.697	15,24 / 0.600	35,5 / 1.398
AR 40-HZL/LP	40	12	Tin	Gold	17,7 / 0.697	15,24 / 0.600	50,8 / 2.000

Depth of insertion 1.8 to 4.0 mm

Mechanical and electrical data

Vibration 20 g after MIL-STD-202
Shock 150 g to MIL-STD-202
Insertion frequency > 1000
Transitional resistance after 100 insertion cycles < 12 mΩ
Capacity between adjacent contacts < 0.9 pF
Capacity between opposite adjacent contacts < 0.4 pF
Air and creepage space between adjacent contacts > 0.4 mm
Tensile strength 1000 V_{eff}

Contacts

Contact spring: copper alloy, slit 4 times.
Surface gold over nickel.
Absolute protection against capillary action.
Connecting pins brass, solder version.

Insulators

Polyester GV, VO self-extinguishing UL 94
Insulation resistance 10¹² Ω
Operating temperature range - 65 °C to +150 °C
Retains shape in solder bath
Resistant to detergent.

¹) HGL = Solder pin gold over nickel

²) HZL = Solder pin tin over nickel

Depth of insertion: 2.3 to 3.8 mm