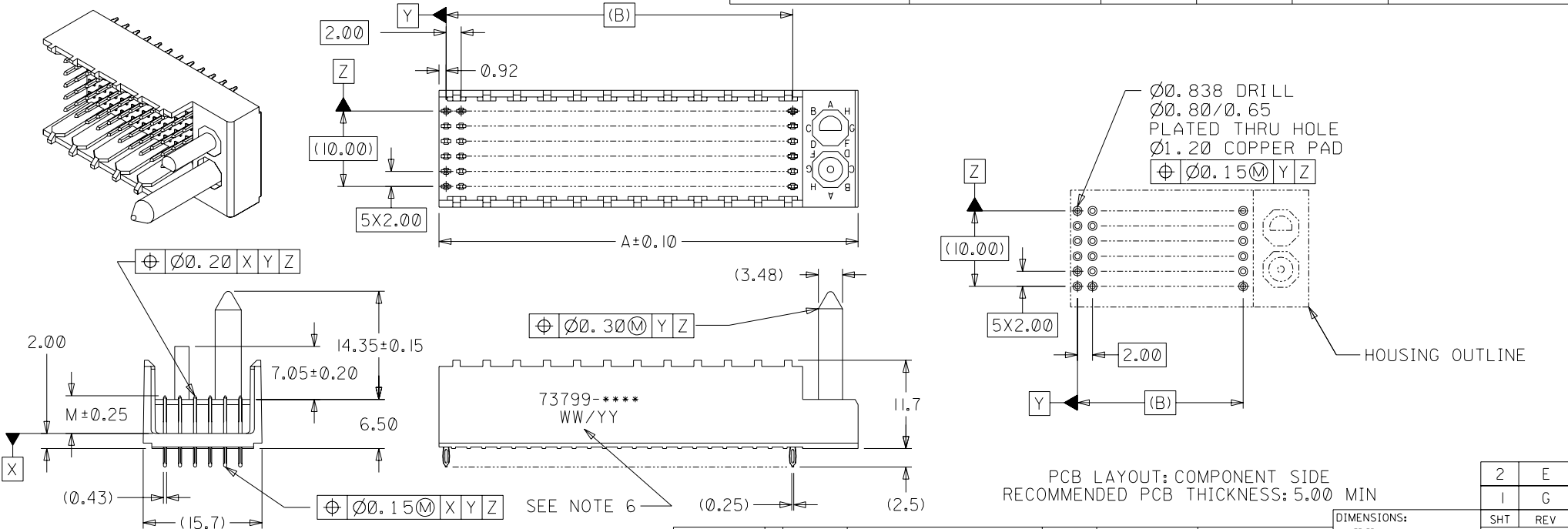


NOTES:

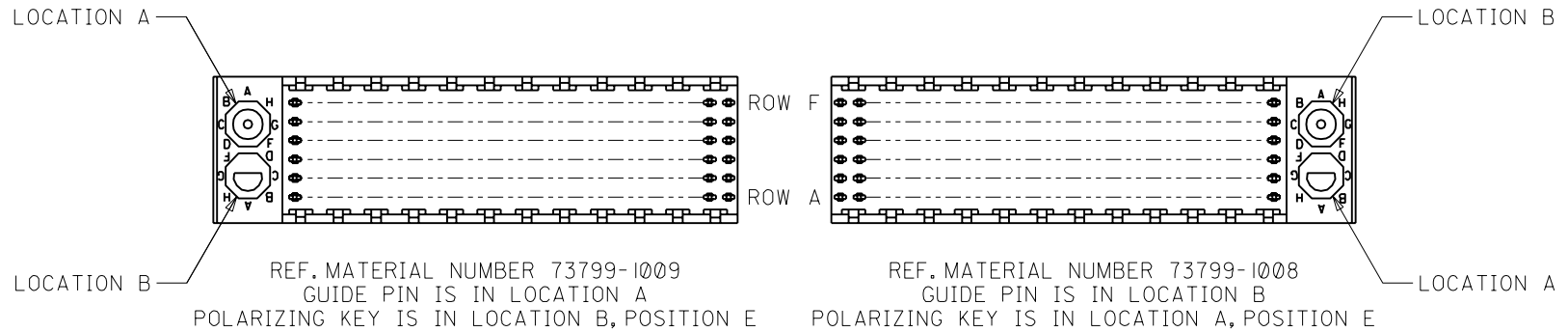
1. MATERIALS: HOUSING-LIQUID CRYSTAL POLYMER (LCP), GLASS FILLED UL94 V-0, COLOR: BLACK, TERMINAL-PHOSPHOR BRONZE.
2. FINISHES: SELECTIVE GOLD (Au) IN CONTACT AREA, 0.00076mm MIN. THICKNESS, NICKEL (Ni) AND GOLD FLASH OVERALL; SELECTIVE GOLD IN CONTACT AREA, 0.00076mm MIN. THICKNESS, SELECTIVE TIN/LEAD (Sn/Pb) IN TAIL AREA, NICKEL OVERALL.
3. THIS PART CONFORMS TO MOLEX PRODUCT SPECIFICATION PS-73780-999.
4. CONSULT FACTORY FOR MIXED CONTACT MATING LENGTHS.
5. PACKAGE PER PK-70873-0818.
6. PARTS MARKED WITH PART NUMBER AND DATE CODE, ON EITHER SIDE, APPROXIMATELY WHERE SHOWN.

MATERIAL NUMBER	NUMBER OF SIGNAL CONTACTS	DIM "A"	DIM "B"	DIM "M"	PLATING
73799-00**	72	31.6	22.00	5.00	GOLD/GOLD FLASH
73799-02**	72	31.6	22.00	6.00	GOLD/GOLD FLASH
73799-10**	144	55.6	46.00	5.00	GOLD/GOLD FLASH
73799-12**	144	55.6	46.00	6.00	GOLD/GOLD FLASH
73799-20**	72	31.6	22.00	5.00	GOLD/TIN-LEAD
73799-22**	72	31.6	22.00	6.00	GOLD/TIN-LEAD
73799-30**	144	55.6	46.00	5.00	GOLD/TIN-LEAD
73799-32**	144	55.6	46.00	6.00	GOLD/TIN-LEAD



PCB LAYOUT: COMPONENT SIDE
RECOMMENDED PCB THICKNESS: 5.00 MIN

REVISED EC NO: UCP2003-2260 DRWN: THOMAS 03/04/25 CHK: BINGHAM 03/04/25 APPR: REED 03/04/25	DESCRIPTION MAJOR CRITICAL	GENERAL TOLERANCES: (UNLESS SPECIFIED)		SCALE 2 : 1	DESIGN UNITS <input checked="" type="checkbox"/> mm <input type="checkbox"/> INCH	THIRD ANGLE PROJECTION	DIMENSIONS:		SHT	REV
		mm	INCH	DRAWN BY & DATE JBINGHAM 97/05/16	TITLE: SALES ASSY, HDM SINGLE-END MIDPLANE, POLAR/GUIDE OPTION, (DUCKPIN)		INCH	mm	INCH	mm
G	REV	4 PLACES	±0.	±.	CHECKED BY & DATE SREED 97/05/16	APPROVED BY & DATE CBIXLER 97/05/16	MOLEX INCORPORATED		MATERIAL NO. DRAWING NO.	
		3 PLACES	±0.	±.	CAD FILENAME S73799X1.DGN		SEE CHART	SD-73799-001	SHEET NO. 1 OF 2	
		2 PLACES	±0.05	±.	THIS DRAWING CONTAINS INFORMATION THAT IS PROPRIETARY TO MOLEX INCORPORATED AND SHOULD NOT BE USED WITHOUT WRITTEN PERMISSION.		SIZE B			
		1 PLACE	±0.10	±.						



MATERIAL NUMBER ASSIGNMENT

73799- * * * *

- 0 = 72-CIRCUIT, GOLD/GOLD FLASH
- 1 = 144-CIRCUIT, GOLD/GOLD FLASH
- 2 = 72-CIRCUIT, GOLD/TIN-LEAD
- 3 = 144-CIRCUIT, GOLD/TIN-LEAD

- 0 = 5.00 MATING LENGTH
- 1 = RESERVED
- 2 = 6.00 MATING LENGTH

NUMBER	GUIDE POST LOCATION	POLAR KEY POSITION
00	B	
01	A	A
02	B	B
03	A	C
04	B	D
05	A	E
06	B	F
07	A	G
08	B	H
09	A	
10	B	
11	A	
12	B	
13	A	
14	B	
15	A	
16	B	
17	A	N/A
18	N/A	

SEE SHEET 1 EC NO. UDT2000-0312 DRWN: BINGHAM 99/09/28 CHK: REED 99/09/28 APPR: BIXLER 99/09/28	QUALITY SYMBOLS MAJOR CRITICAL	GENERAL TOLERANCES: (UNLESS SPECIFIED) mm INCH	SCALE 2 : 1 DESIGN UNITS <input checked="" type="checkbox"/> mm <input type="checkbox"/> INCH	DIMENSIONS: <input type="checkbox"/> mm <input type="checkbox"/> INCH <input checked="" type="checkbox"/> mm ONLY	SHT REV REVISION ON CAD ONLY
	DRAWN BY & DATE JBINGHAM 97/05/16	TITLE: SALES ASSY, HDM SINGLE-END MIDPLANE, POLAR/GUIDE OPTION, (DUCKPIN)			
	CHECKED BY & DATE SREED 97/05/16	MOLEX INCORPORATED			
	APPROVED BY & DATE CBIXLER 97/05/16	CAD FILENAME S73799X2.DGN	MATERIAL NO. SEE CHART	DRAWING NO. SD-73799-001	SHEET NO. 2

DRAFT WHERE APPLICABLE MUST REMAIN WITHIN DIMENSIONS

THIS DRAWING CONTAINS INFORMATION THAT IS PROPRIETARY TO MOLEX INCORPORATED AND SHOULD NOT BE USED WITHOUT WRITTEN PERMISSION.