

Tous droits strictement reserves. Reproduction ou communication a des tiers interdite sous quelque forme que ce soit sans autorisation ecrite du proprietaire. Propriete de c FCI. Droits de reproduction FCI.

FCI

All rights strictly reserved. Reproduction or issue to third parties in any form whatever is not permitted without written authority from the proprietor. Property of FCI. Copyright FCI.

A
B

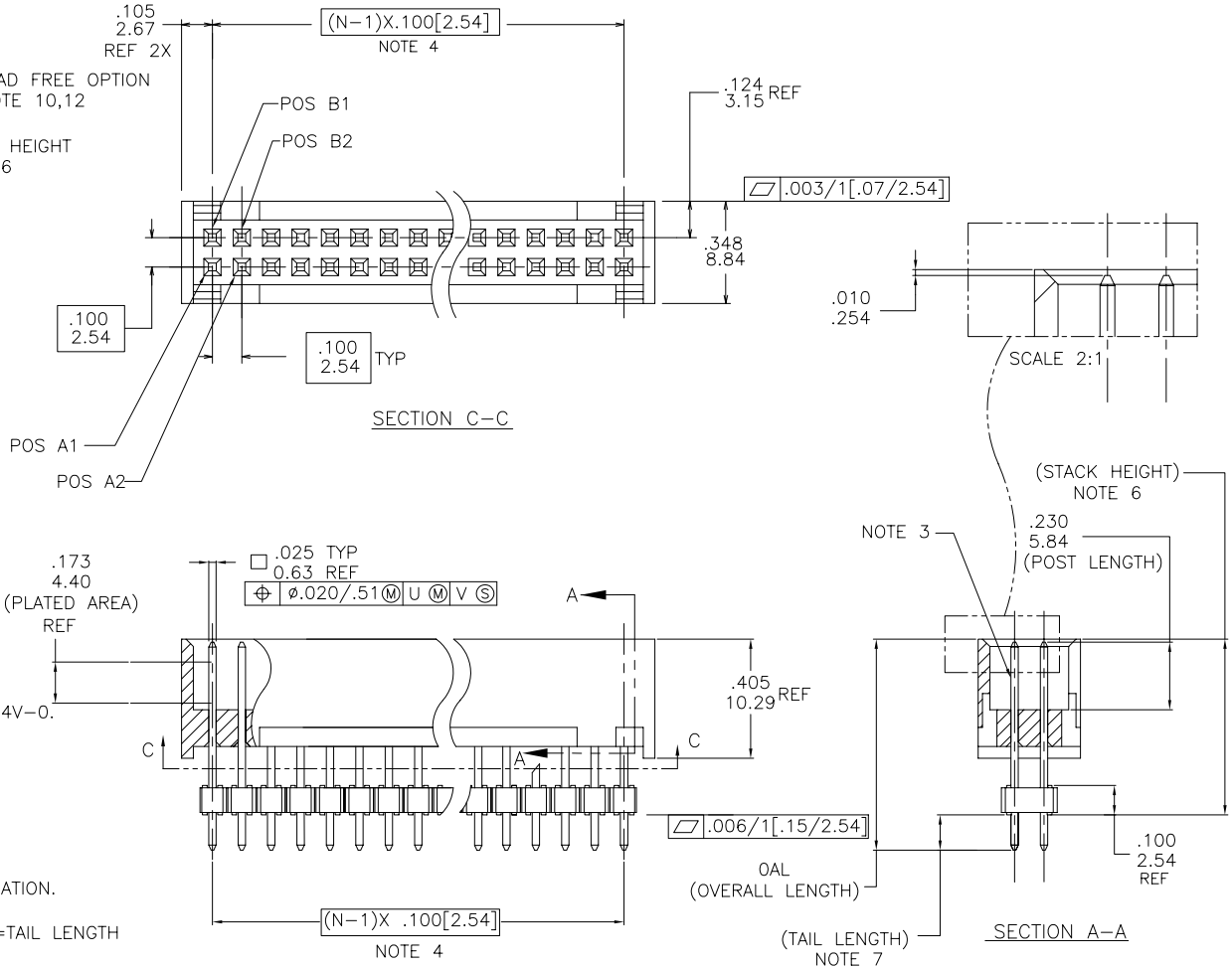
PRODUCT NUMBER

6 4 1 1 1 - X X X - X X - X X X X LF

- PLATING
- S=15µ"[0.38µm]GOLD ON CONTACT AREA
 - 120µ"[3.0µm]TIN/LEAD ON TAIL
 - G=30µ"[0.76µm]GOLD ON CONTACT AREA
 - 120µ"[3.0µm]TIN/LEAD ON TAIL
 - T=120µ"[3.0µm]TIN/LEAD (SEE NOTE 9).
- LEAD FREE OPTION
- S=15µ"[0.38µm]GOLD ON CONTACT AREA
 - 100µ"[2.54µm] PURE TIN ON TAIL
 - G=30µ"[0.76µm]GOLD ON CONTACT AREA
 - 100µ"[2.54µm] PURE TIN ON TAIL
 - T=100µ"[2.54µm] PURE TIN

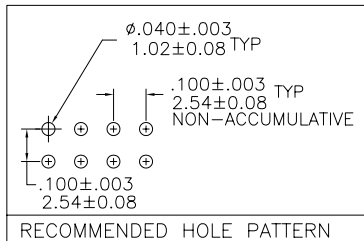
PIN STYLE	OAL
11	0.540/13.72
12	0.640/16.26
14	0.740/18.80
16	0.840/21.34
18	0.940/23.88
20	1.040/26.42
22	1.140/28.96
24	1.240/31.50
26	1.340/34.04

POSITIONS PER ROW	
05	5 POSITIONS
07	7 POSITIONS
08	8 POSITIONS
10	10 POSITIONS
13	13 POSITIONS
15	15 POSITIONS
17	17 POSITIONS
20	20 POSITIONS
25	25 POSITIONS
30	30 POSITIONS
32	32 POSITIONS
36	36 POSITIONS



NOTES:

- HOUSING MAT'L: HIGH TEMPERATURE THERMOPLASTIC. UL94V-0. COLOR : BLACK
- PIN MATERIAL: PHOSPHOR-BRONZE
- 3 LBS/1.36 KG MIN. RETENTION.
- TO DETERMINE DIMENSIONS:
N = NUMBER OF POSITIONS PER ROW.
EXAMPLE: 10 POS., (N-1) x .100/2.54 = .900/22.86
- PACKAGED IN TRAYS
- STACK HEIGHT TO BE DETERMINED BY CUSTOMER APPLICATION. EXAMPLE FOR STACKER HEIGHT: 0 5 0 0 = .500 IN.
- TAIL LENGTH IS DETERMINED BY: (OAL)-(STACK HEIGHT)=TAIL LENGTH
- UNDERPLATING: 50µ"/1.27µm Ni.
- PIN TIPS ON TIN/LEAD PLATED PRODUCT MAY HAVE BARE METAL ON TWO SIDES, BOTH ENDS.
- ADD "LF" SUFFIX AT THE END OF PART NUMBER FOR LEAD FREE OPTION.
- THE HOUSING WILL WITHSTAND EXPOSURE TO 260°C PEAK TEMPERATURE FOR 15 SECONDS IN A WAVE SOLDER APPLICATION WITH A 1.5mm MINIMUM THICK CIRCUIT BOARD. SEE APPLICATION NOTES/PROCEDURES IF THEY ARE AVAILABLE.
- IF "LF" P/N THE PRODUCT MEETS EUROPEAN UNION DIRECTIVES AND OTHER COUNTRY REGULATION AS DESCRIBED IN GS-22-008.



mat'l. code		tolerances unless otherwise specified		CUSTOMER COPY		FCI	
SEE NOTES 1 & 2				.XX ±.01/0.3		www.fciconnect.com	
ltr	ecn no	dr	date	linear	.XXX ±.005/0.13	projection	title
A	V92814	DAI	08/24/99	angles	.XXXX ±.0020/0.051	INCH/MM	SHROUDED HDR. .100 STACK, PCB to PCB
B	V10891	GIP	01/25/02		0° ±2°		
C	V21476	GIP	09/18/02			product family	HEADER
D	M05-0089	MHT	5/20/05	dr	D.INGRAM 07/07/99	size	dwg no
				enr	H.SUNDY 07/20/99	A	64111
				chr	H.SUNDY 07/20/99	scale	1:1
				appd	H.SUNDY 07/20/99		
sheet index	revision sheet	D	1				