

## SPECIFICATIONS

### Mechanical

Contact Retention Force: 1.36Kgf min.

### Electrical

Voltage Rating: 250V

Current Rating: 2.0A max.per pin

Dielectric Withstanding Voltage: 1000V AC

Insulation Resistance: 1000M $\Omega$  min.

### Physical

Housing: High Temperature Nylon, UL 94V-0 Rating In Color Black

Contact: Copper alloy

Plating: See "ORDERING INFORMATION"

Operating Temperature: -40 to +85

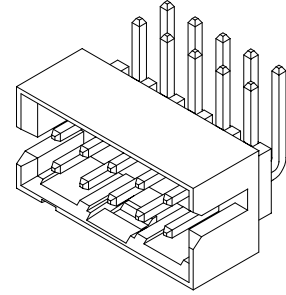
## Header Connector

HL56 Series

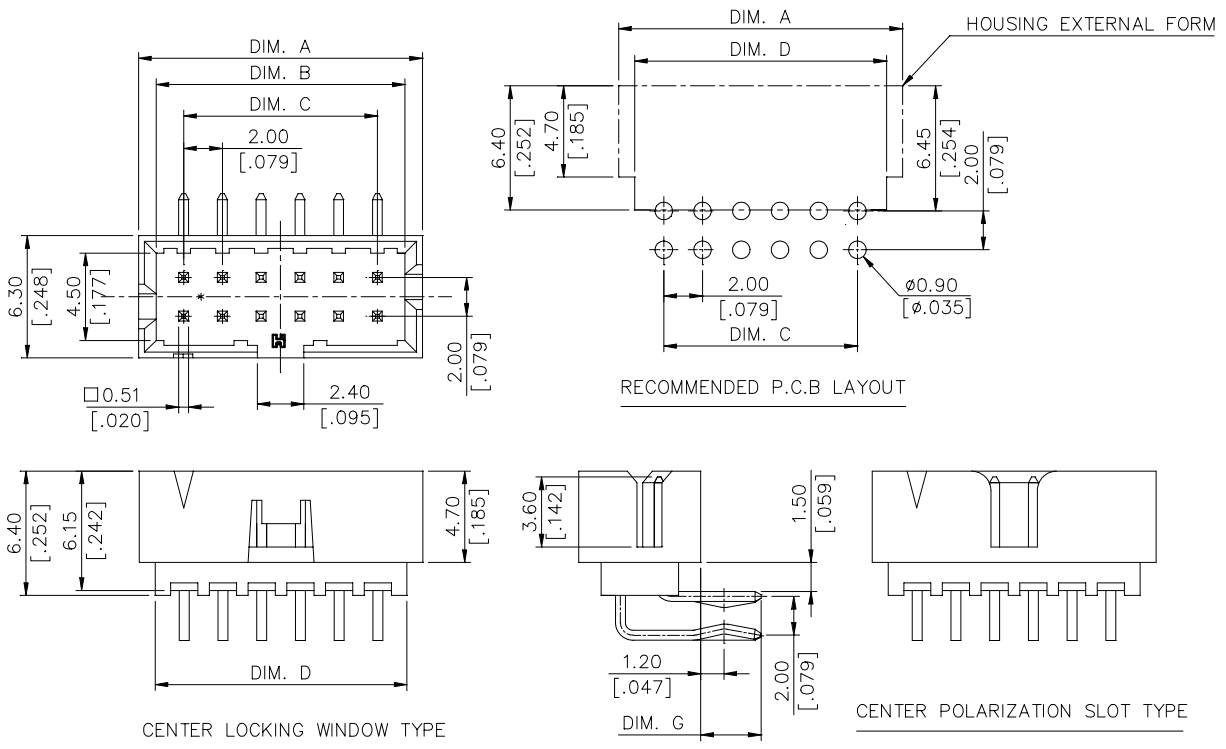
Vertical, R/A Type

Plug

2.00mm [.079"] Pitch



## DRAWING



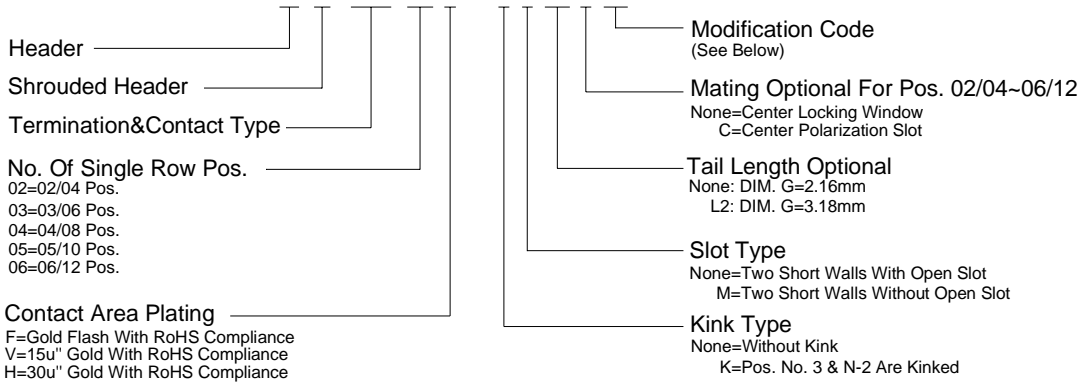
## ORDERING INFORMATION

See The Attachment I

See The Attachment II

## The Attachment I

PRODUCT No. : H L 5 6 \* \* \* - \* \* \* \* \*



### Modification Code

CODE	REMOVED PINS	CODE	REMOVED PINS	CODE	REMOVED PINS	CODE	REMOVED PINS
NONE	FULL PIN	NONE	FULL PIN	NONE	FULL PIN	NONE	FULL PIN
D0	POS. NO. 1	E5	POS. NO. 9 & 10	L6	POS. NO. 14	T9	POS. NO. 25, 27 & 28
D1	LAST PIN	P0	POS. NO. 4	L7	POS. NO. 16	U0	POS. NO. 3, 5, 7 & 9
D2	POS. NO. 20	P1	POS. NO. 6	L8	POS. NO. 1,2,3,4,14,15&16	U1	POS. NO. 3 & 5
D3	POS. NO. 21	P3	POS. NO. 7	L9	POS. NO. 25	U2	POS. NO. 11
D4	POS. NO. 8	P4	POS. NO. 5	T0	POS. NO. 1,2,10,11&12	U3	POS. NO. 19
D6	POS. NO. 25	P5	POS. NO. 10	T1	POS. NO. 7 & 8	U4	POS. NO. 13
D7	POS. NO. 26	P6	POS. NO. 2	T2	POS. NO. 3, 25 & 26	U5	POS. NO. 13,15 & 16
D8	POS. NO. 28	P7	POS. NO. 3	T3	POS. NO. 8 & N	U6	POS. NO. 4 & 7
D9	POS. NO. 15	P8	POS. NO. 17	T4	POS. NO. 3, 19, 20 & 29	U7	POS. NO. 8 & 13
E1	POS. NO. 24	P9	POS. NO. 9	T5	POS. NO. 8 & 9	U8	POS. NO. 4, 5 & 6
E2	POS. NO. 22	L1	POS. NO. 12	T6	POS. NO. 3 & LAST PIN	U9	POS. NO. 1 & 11
E3	POS. NO. 30	L3	POS. NO. 32	T7	POS. NO. 8 & 19		
E4	POS. NO. 38	L5	POS. NO. 18	T8	POS. NO. 30 & 32		

### REMARK:

- (1) NONE: STANDARD PRODUCT  
(X): TO BE SPECIFIED ON CORRELATIVE CUSTOMER DRAWING
- (2) NONE: STANDARD PRODUCT (COLOR BLACK)  
K: THE FIRST & LAST PAIRS OF TERMINALS ARE DEFORMED WITH KINKS
- (3) FOR REMOVED PIN(S) LOCATED AT FIRST OR LAST PAIR, KINKED POSITION(S) SHOULD BE CHANGED TO THE NEAREST PAIR.

## The Attachment II

HL5606*-*****	12	14.65 [0.577]	12.85 [0.506]	10.00 [0.394]	13.00 [0.512]
HL5605*-*****	10	12.65 [0.498]	10.85 [0.427]	8.00 [0.315]	11.00 [0.433]
HL5604*-*****	08	10.65 [0.419]	8.85 [0.348]	6.00 [0.236]	9.00 [0.354]
HL5603*-*****	06	8.65 [0.341]	6.85 [0.270]	4.00 [0.157]	7.00 [0.276]
HL5602*-*****	04	6.65 [0.262]	4.85 [0.191]	2.00 [0.079]	5.00 [0.197]
P/N	POS.	DIM. A	DIM. B	DIM. C	DIM. D