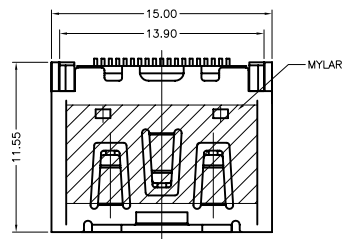


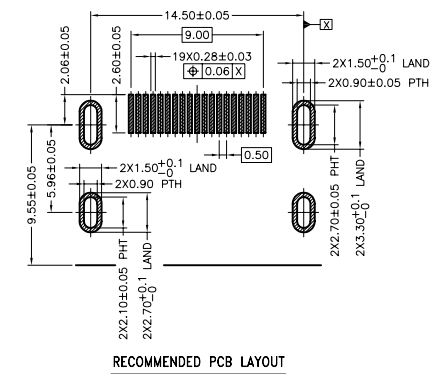
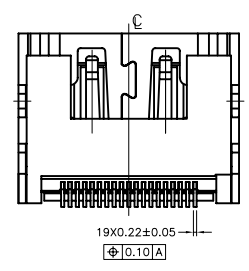
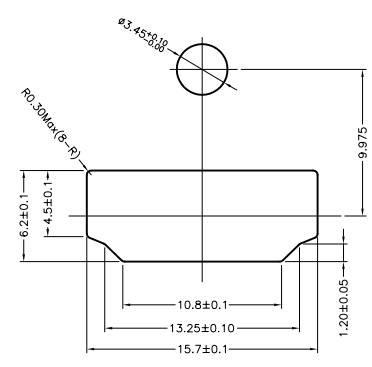
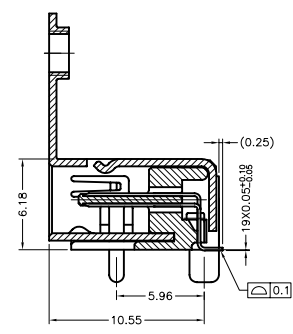
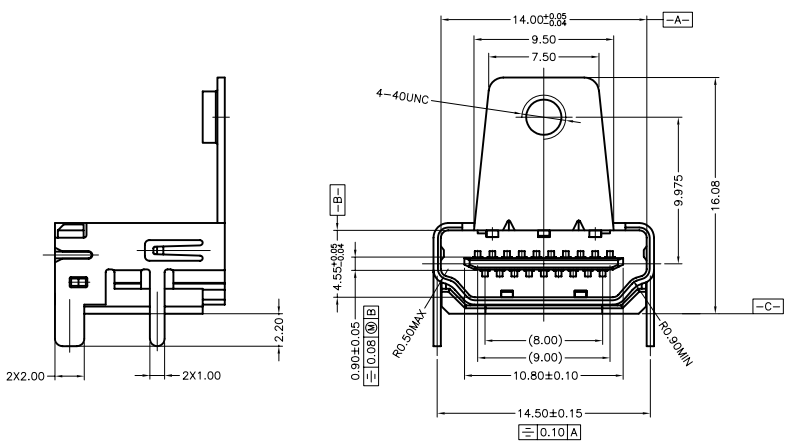
This document is the property of Amphenol Corporation and is delivered on the express condition that it is not to be disclosed, reproduced or used, in whole or in part, for manufacture or sale by anyone other than Amphenol Corporation without its prior consent, & that no right is granted to disclose or to use any information in this document.

| REVISIONS | | | | |
|-----------|--------|---------------------|---------|----------|
| SYM | ECN | DESCRIPTION | DATE | APPROVED |
| 1 | HK5344 | Release to customer | 9/16/08 | IP |



NOTES:
 1. MATERIAL:
 HOUSING: HIGH TEMPERATURE PLASTIC UL94V-0, BLACK.
 CONTACT: PHOSPHOR BRONZE ,THICKNESS=0.20mm
 SHIELD: BRASS, THICKNESS=0.5mm
 2. FINISH:
 CONTACT: REFER TO P/N SYSTEM ON MATING AREA
 1.27~2.54um NICKEL UNDERPLATE OVERALL
 2.54~5.08um PURE TIN ON SOLDER TAIL
 SHIELD: REFER TO P/N SYSTEM
 3. ELECTRICAL SPECIFICATION:
 CURRENT RATING: 0.5A
 CONTACT RESISTANCE: 30mΩ MAX
 INSULATOR RESISTANCE: 100MΩ MIN(UNMATED) 10MΩ MIN(MATED)
 DIELECTRIC WITHSTANDING VOLTAGE: 500 V AC(UNMATED) 300 V AC(MATED)
 4. ORDER P/N SYSTEM: HDM-F191-022-X-X-XX

MATING AREA PLATING:
 1- 0.76um MIN Au.
 2- 0.38um MIN Au.
 A- Gold FLASH
 PACKING METHOD:
 N/A- PACKING IN TRAY.
 TR- PACKING IN TAPE AND REEL.
 SHELL PLATING:
 1- GOLD FLASH PLATED.
 2- SOLDERABLE NICKEL PLATED.
 3- TIN PLATED.



RECOMMENDED PCB LAYOUT

Customer Drawing

| ITEM | PART NO. | REQ'D | DESCRIPTION |
|---|---|---------|---|
| PARTS LIST | | | |
| UNLESS OTHERWISE SPECIFIED TOLERANCES U.S. METRIC .X +/- .50 .XX +/- .25 .XXX +/- .10 FRACTIONS +/- ANGLES +/- FOR MATERIALS AND FINISHES SEE NOTES REMOVE SHARP EDGES DIMENSIONS U.S. INCHES (METRIC) (MM) | APPROVAL | DATE | Amphenol TITLE HDMI R/A SMT RECEPTACLE (WITH FLANGE, SHELL DIP) SIZE DRAWING NO. A3 C HDM-F191-022-X-X-XX REV. 1 SCALE NONE SHEET 1 OF 1 |
| | DRAWN Drack.Xie | 9/16/08 | |
| | CHECKED Ron.Xiao | 9/16/08 | |
| | CHECKED | | |
| | DRAWING FILE : | | |
| | PE MASTER DRAWING FILE: CHDMF191022000X | | |
| | ANGLE OF PROJECTION | | |
| | | | |