



Insulated Terminals Molded Diallyl

Terminals

Please Refer to Figure 866

Miscellaneous Threads

Part No.	"T" Thread	W	X	Y	Z	DWV
866A	6-32	.250	.219	.375	.700	6000
866B	6-32	.250	.250	.375	.700	6000
866C	6-32	.250	.312	.375	.700	6000
866D	6-32	.250	.375	.375	.700	6000
866E	4-40	.250	.219	.375	.700	6000
866F	4-40	.250	.250	.375	.700	6000
866G	4-40	.250	.312	.375	.700	6000
866H	4-40	.250	.375	.375	.700	6000
868A	6-32	.250	.219	.531	.850	8000
868B	6-32	.250	.250	.531	.850	8000
868C	6-32	.250	.312	.531	.850	8000
868D	6-32	.250	.375	.531	.850	8000
868E	4-40	.250	.219	.531	.850	8000
868F	4-40	.250	.250	.531	.850	8000
868G	4-40	.250	.312	.531	.850	8000
868H	4-40	.250	.375	.531	.850	8000

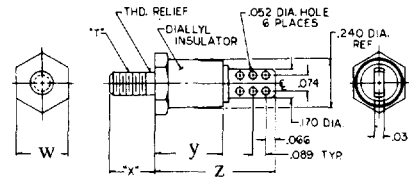


Fig. 866

Please Refer to Figure 867

Part No.	"T" Thread	W	X	Y	Z	DWV
867A	6-32	.250	N/A	.375	.700	6000
867B	4-40	.250	N/A	.375	.700	6000
869A	6-32	.250	N/A	.531	.850	8000
869B	4-40	.250	N/A	.531	.850	8000

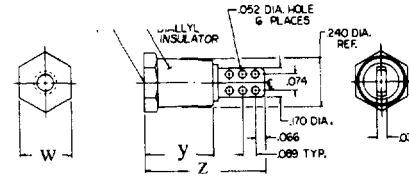


Fig. 867

Please refer to Figure 1430 & 1433

Part No.	Board Thick	Mounting Hole Dia	+ .003 - .001	"T"	DWV
1430	.094	.195		10-32	1500
1433	.125	.257		1/4-28	1500

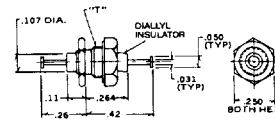


Fig. 1430

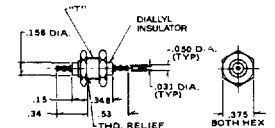
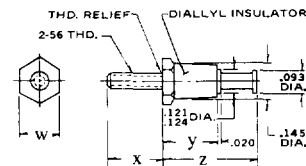


Fig. 1433

Please Refer to Figure M4TS7

Part No.	"T" Thread	W	X	Y	Z	DWV
M4TS7	2-56	.156	.188	.218	.360	6000
M5TS7	2-56	.156	.094	.218	.360	6000
M6TS7	2-56	.156	.125	.218	.360	6000
MTS7	2-56	.156	.218	.218	.360	6000
MTS12	2-56	.156	.218	.375	.520	6000

Fig. M4TS7



Double Turret

Refer to Figure M2

External Threads

Part No.	Thread	W	X	Y	Z	Terminal Dia	DWV
M2TS7A	2-56	.156	.094	.218	.450	.093	6000
M2TS7B	2-56	.156	.125	.218	.450	.093	6000
M2TS7C	2-56	.156	.188	.218	.450	.093	6000
M2TS7D	2-56	.156	.218	.218	.450	.093	6000

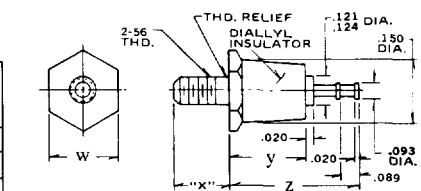


Fig. M2

Standard Plating Suffix to Part Number

See Page 93 for all plating options.

- 4 (Sb over Cu)
 - 7 (Au over Cu)
 - 55 (Sn over Cu)
- Reflowed

OR

- 12 (Ni over Cu)
- 12 (Ni over Cu)
- 12 (Ni over Cu)

TOLERANCE: .xxx :.010, .xx :.016 (ALL DIMS. BEFORE PLATING)