

Feature

- § Low Power Consumption
- § High Intensity
- § I.C. compatible

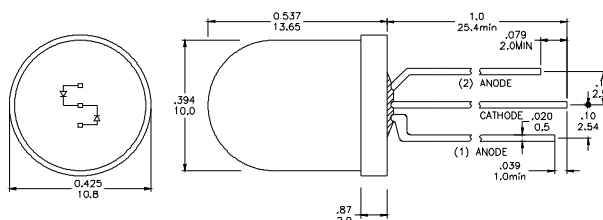
Applications

- § Commercial Outdoor Sign Board
- § Front Panel Indicator
- § Backlight

Description

- § The (1)Red and (2)Yellow Chips are Matched For uniform Light Output
- § Diffusion Lens

Package Dimension



* Tolerance : ± 0.01 / 0.25 Unit : ± inch / mm

Absolute Maximum Ratings at Ta=25°C

Symbol	Parameter	Max.	Unit
PD	Power Dissipation	100	mW
VR	Reverse Voltage	5	V
IAF	Average Forward Current	30	mA
IPF	Peak Forward Current (Duty=0.1, 1kHz)	100	mA
—	Derating Linear Form 25°C	0.4	mA/°C
Topr	Operating Temperature Range	-40 to + 80	°C
Tstg	Storage Temperature Range	-40 to + 100	°C

Lead Soldering Temperature [1.6mm (0.063inch) From Body] 260°C For 5 Seconds.

Electrical / Optical Characteristics and Curves at Ta=25°C

Symbol	Parameter	Test Condition	Min.	Typ.	Max.	Unit
VF	Forward Voltage	IF= 20 mA	R	2.1	2.3	V
			G	2.0	2.3	
IR	Reverse Current	VR= 5 V			50	μ A
IV	Luminous Intensity	IF= 20 mA	R	100		mcd.
			G	90		
λ d	Specific binning requirements –please contact our home office	IF= 20 mA	R	640		nm
			G	590		

Specific binning requirements –please contact our home office

