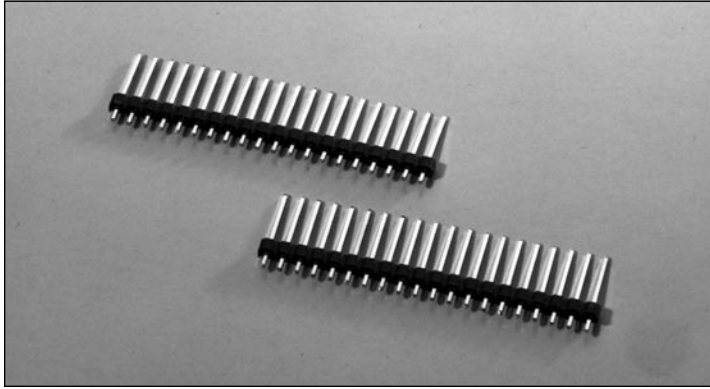


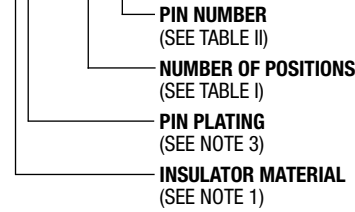
.100" (2.54mm) Single Row, Through Hole Vertical Header with Special Standoffs



9100 SERIES ("POST/BOXE")

PART NUMBER LEGEND

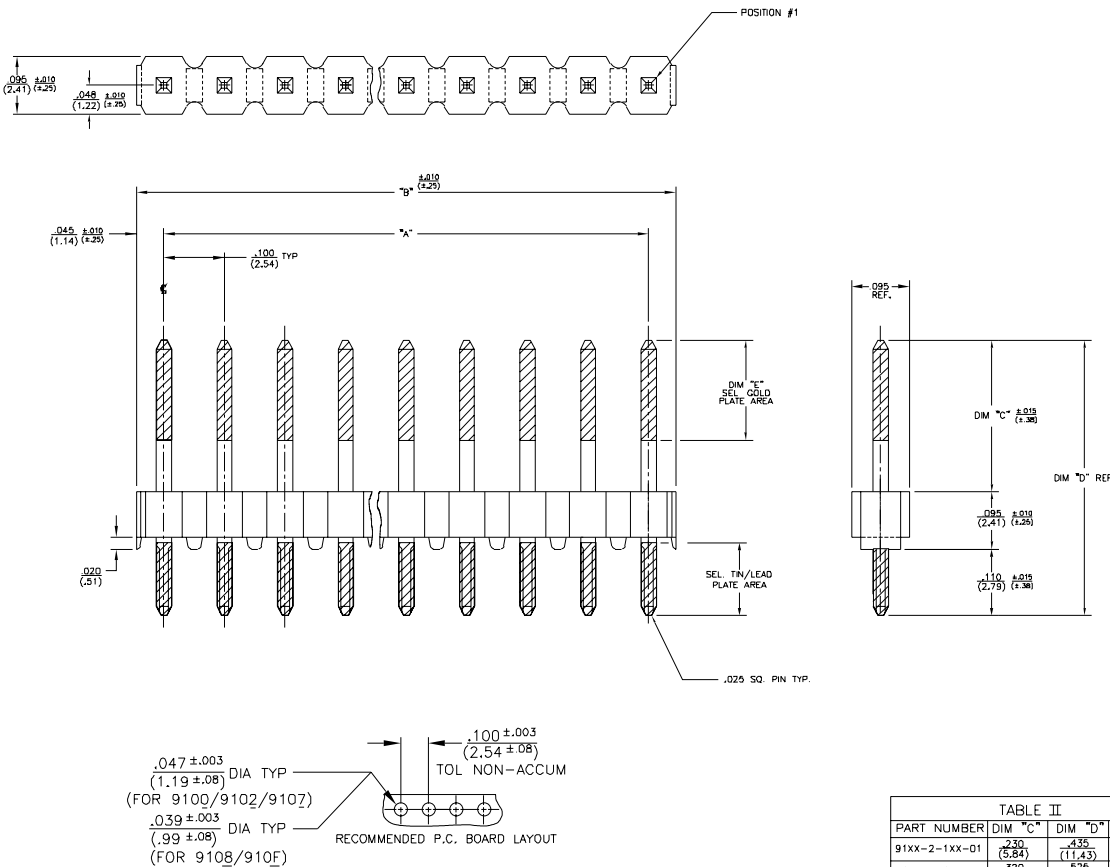
91XX-2-1XX-XX



MATING CONNECTORS: 9000 SERIES

NOTES:

- INSULATOR MATERIAL:
91DX-2-1XX-XX - POLYESTER (PET), 30% GLASS REINFORCED, UL 94V-0, COLOR: BLACK
91LX-2-1XX-XX - POLYESTER (PCT), 30% GLASS REINFORCED, UL 94V-0, COLOR: BLACK
- PIN MATERIAL: PHOSPHOR BRONZE
- PIN FINISH:
91XG-2-1XX-XX - .000150/.0005 BRITE TIN PLATE OVER .000050/.000100 NICKEL PLATE.
91XJ-2-1XX-XX - .000030 OVERALL GOLD PLATE OVER .000050/.000150 NICKEL PLATE.
91XB-2-1XX-XX - .000030 SEL. GOLD PLATE IN CONTACT AREA OVER .000050/.000150 NICKEL PLATE ALL OVER; .0001/.0002 SEL. 90/10 TIN/LEAD PLATE ON SOLDER TAIL AS INDICATED.
91XE-2-1XX-XX - .000015 SEL. GOLD PLATE IN CONTACT AREA OVER .000050/.000150 NICKEL PLATE ALL OVER; .0001/.0002 SEL. 90/10 TIN/LEAD PLATE ON SOLDER TAIL AS INDICATED.
- ALL DIMS ARE IN IN./ (MM).



PART NUMBER	DIM "A"	DIM "B"
91XX-2-102-XX	100 (2.54)	190 (4.82)
91XX-2-103	200 (5.08)	290 (7.36)
91XX-2-104	300 (7.62)	390 (9.91)
91XX-2-105	400 (10.16)	490 (12.45)
91XX-2-106	500 (12.70)	590 (14.98)
91XX-2-107	600 (15.24)	690 (17.53)
91XX-2-108	700 (17.78)	790 (20.06)
91XX-2-109	800 (20.32)	890 (22.61)
91XX-2-110	900 (22.86)	990 (25.15)
91XX-2-111	1,000 (25.40)	1,090 (27.68)
91XX-2-112	1,100 (27.94)	1,190 (30.23)
91XX-2-113	1,200 (30.48)	1,290 (32.76)
91XX-2-114	1,300 (33.02)	1,390 (35.31)
91XX-2-115	1,400 (35.56)	1,490 (37.85)
91XX-2-116	1,500 (38.10)	1,590 (40.39)
91XX-2-117	1,600 (40.64)	1,690 (42.93)
91XX-2-118	1,700 (43.18)	1,790 (45.47)
91XX-2-119	1,800 (45.72)	1,890 (48.01)
91XX-2-120	1,900 (48.26)	1,990 (50.55)
91XX-2-121	2,000 (50.80)	2,090 (53.09)
91XX-2-122	2,100 (53.34)	2,190 (55.63)
91XX-2-123	2,200 (55.88)	2,290 (58.17)
91XX-2-124	2,300 (58.42)	2,390 (60.71)
91XX-2-125	2,400 (60.96)	2,490 (63.25)
91XX-2-126	2,500 (63.50)	2,590 (65.79)
91XX-2-127	2,600 (66.04)	2,690 (68.32)
91XX-2-128	2,700 (68.58)	2,790 (70.87)
91XX-2-129	2,800 (71.12)	2,890 (73.41)
91XX-2-130	2,900 (73.66)	2,990 (75.95)
91XX-2-131	3,000 (76.20)	3,090 (78.49)
91XX-2-132	3,100 (78.74)	3,190 (81.03)
91XX-2-133	3,200 (81.28)	3,290 (83.57)
91XX-2-134	3,300 (83.82)	3,390 (86.11)
91XX-2-135	3,400 (86.36)	3,490 (88.65)
91XX-2-136	3,500 (88.90)	3,590 (91.19)
91XX-2-137	3,600 (91.44)	3,690 (93.73)
91XX-2-138-XX	3,700 (93.98)	3,790 (96.27)
91XX-2-139-XX	3,800 (96.52)	3,890 (98.81)
91XX-2-140-XX	3,900 (99.06)	3,990 (101.35)

PART NUMBER	DIM "C"	DIM "D"	DIM "E"
91XX-2-1XX-01	230 (5.84)	435 (11.43)	165 (4.19)
91XX-2-1XX-02	320 (8.13)	526 (13.72)	200 (5.08)



North and South America:
Methode Electronics, Inc. Connector Products
 1700 Hicks Road • Rolling Meadows, IL 60008 USA
 847-392-3500 • Toll Free: 800-323-6864 • Fax: 847-392-9404
 Email: info@methode.com • Web: www.methode.com/connector/index.html

Europe:
Methode Electronics Ireland, Ltd.
 Unit H, Crossagalla Business Park, Ballysimon Rd. • Limerick, Ireland
 +353 (0) 61 401222 • Fax: +353 (0) 61 401942
 Email: info@methode.ie • Web: ireland.methode.com/main.html

Far East:
Methode Electronics Far East, Pte. Ltd.
 1 Tuas Lane, Jurong Town • Singapore 638610
 65-68615444 • Fax: 65-68614777
 Email: sales@methode.com.sg • Web: www.methode.com/mefe/index.html