

ITEM NO.	CHARACTERISTIC DESCRIPTION	TERMINAL VERSION REQUIRED AT EACH CIRCUIT LOCATION (SEE CODES AT RIGHT)												TERMINAL TYPE	PLATING (NOTE 6)											
		1	2	3	4	5	6	7	8	9	10	11	12			13	14	15	16	17	18	19	20	21	22	23
44482-0001	12B1B	2	2	2	2	2	2	2	2	2	2	2	2	2	2	2	2	2	2	2	2	2	2	2	2	N/A
X 44482-0002	12B2B	2	2	2	2	2	2	2	2	2	2	2	2	2	2	2	2	2	2	2	2	2	2	2	2	1
X 44482-0003	04A4C	2	2	2	2	2	2	2	2	2	2	2	2	2	2	2	2	2	2	2	2	2	2	2	2	2
44482-0004	12B1B	2	2	2	2	2	2	2	2	2	2	2	2	2	2	2	2	2	2	2	2	2	2	2	2	2

TERM. I.D. CODES FOR CHART AT LEFT	TERMINAL TYPE	PLATING (NOTE 6)
1	VOID LOC.	N/A
2	STD. TERM., TIN (108)	1
3	STD. TERM., SELECT. GOLD (563)	2
4	GROUNDING TERM., TIN (108)	1
5	GROUNDING TERM., SELECT. GOLD (563)	2

CHARACTERISTICS LEGEND:

- CIRCUIT SIZE**  
(02-24)
- HOUSING STYLE**
- A = FLANGES, W/O DRAIN HOLES
  - B = FLANGES, WITH DRAIN HOLES
  - C = PEGS, W/O DRAIN HOLES
  - D = PEGS, WITH DRAIN HOLES
  - E = PLAIN, W/O DRAIN HOLES
  - F = PLAIN, WITH DRAIN HOLES
- VOIDS**
- 1 = WITH VOIDS, WITH GROUND TERM.
  - 2 = W/O VOIDS, WITH GROUND TERM.
  - 3 = WITH VOIDS, W/O GROUND TERM.
  - 4 = W/O VOIDS, W/O GROUND TERM.
- PLATING COMBINATIONS**
- A = 35 MIN. TIN ONLY
  - B = 30 MIN. GOLD ONLY
  - C = 35 MIN. TIN AND 30 MIN. GOLD

DATE RELEASED: 2000 JAN 10 10:00 AM

SCALE: 1-1

REV.	DATE	DESCRIPTION
1	02/01/94	SEE SHT. 1
2	02/01/94	SEE SHT. 1
3	02/01/94	SEE SHT. 1
4	02/01/94	SEE SHT. 1

SEE CHART. SDA-44482-0000

MOLEX INCORPORATED

MINI-FIT I.P.A. SERIES

VERTICAL HEADER ASS'Y., SELECTIVELY LOADED.

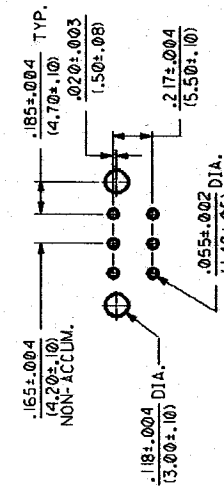
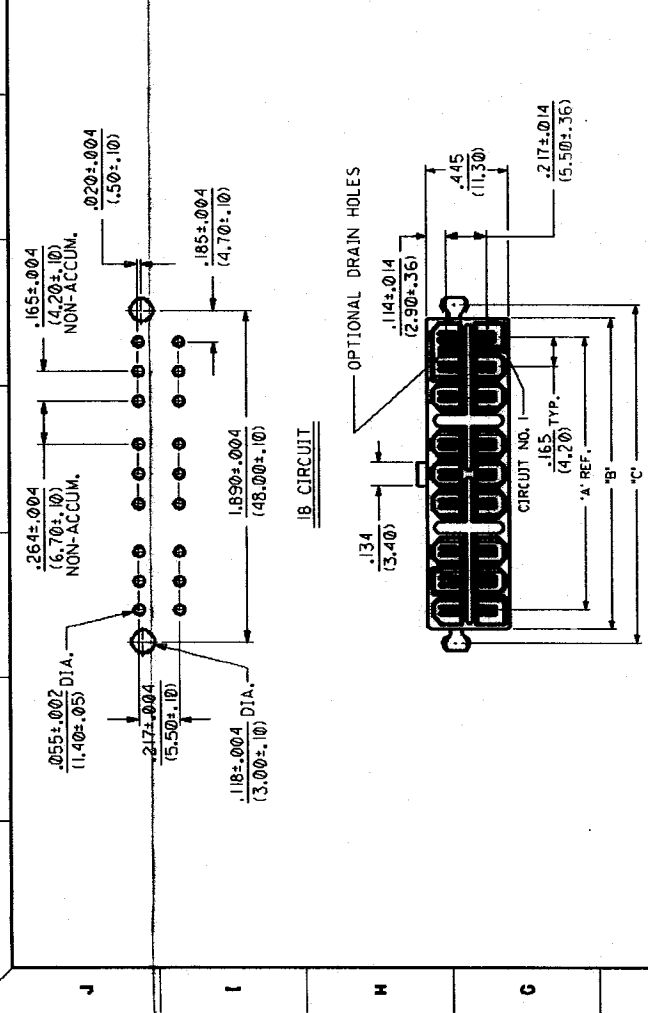
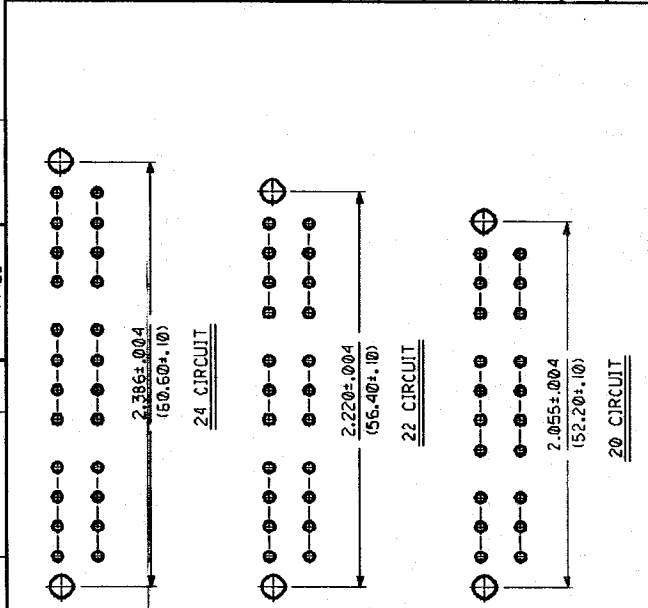
REVISIONS

4 5 6 7 8 9 10 11 12

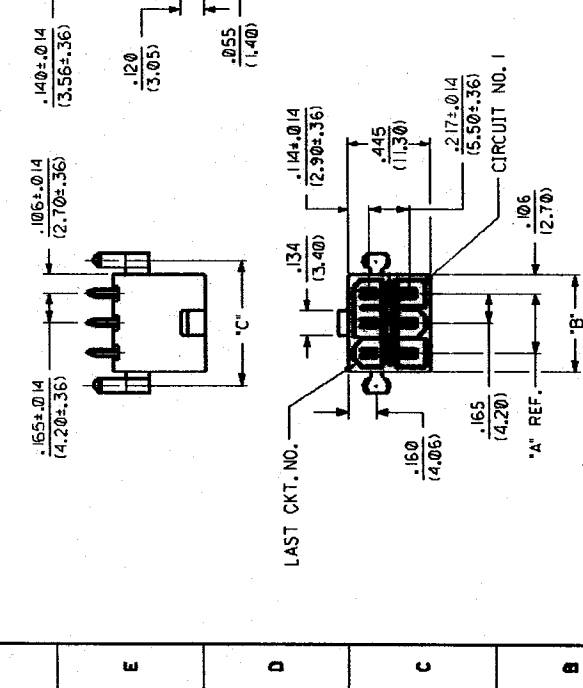
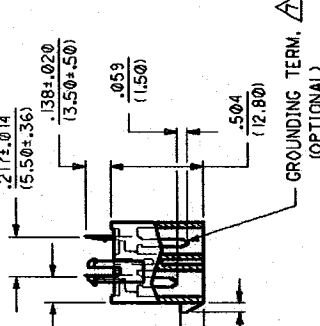
44482

**LETTER DIMENSIONS FOR ASSEMBLIES WITH PEGS**

CKT. SIZE	DIM. "A"	DIM. "B"	DIM. "C"
2	.213 (5.40)	.370 (9.40)	
4	.165 (4.20)	.378 (9.50)	.535 (13.50)
6	.331 (8.40)	.543 (13.80)	.701 (17.80)
8	.496 (12.60)	.709 (18.00)	.866 (22.00)
10	.661 (16.80)	.874 (22.20)	1.031 (26.20)
12	.827 (21.00)	1.039 (26.40)	1.197 (30.40)
14	.992 (25.20)	1.205 (30.60)	1.362 (34.50)
16	1.157 (29.40)	1.370 (34.80)	1.528 (38.80)
18	1.520 (38.60)	1.732 (44.00)	1.890 (48.00)
20	1.685 (42.80)	1.898 (48.20)	2.055 (52.20)
22	1.850 (47.00)	2.063 (52.40)	2.220 (56.40)
24	2.016 (51.20)	2.228 (56.60)	2.386 (60.50)



RECOMMENDED HOLE LAYOUT FOR .070/(1.78) MAX. THICK P.C. BOARD



REVISIONS

REV.	DATE	BY	CHKD.	REVISIONS
1				SEE SHT. 1
2				SEE SHT. 1
21				

DATE: 7/28/94

MOLEX (INCORPORATED) 2

SEE CHART SDA-44482-0000

VERTICAL HEADER ASSY. SELECTIVELY LOADED, MINI-FIT T.P.A. SERIES

REVISIONS ONLY ON CAD SYSTEM

DIMENSIONS SHOWN UNLESS OTHERWISE SPECIFIED

INCH	MILLIMETER
1/16	1.5748
1/8	3.1750
1/4	6.3500
3/8	9.5250
1/2	12.7000
5/8	15.8750
3/4	19.0500
7/8	22.2250
1	25.4000

DATE: 7/28/94

MOLEX (INCORPORATED) 2

SEE CHART SDA-44482-0000

VERTICAL HEADER ASSY. SELECTIVELY LOADED, MINI-FIT T.P.A. SERIES

REVISIONS ONLY ON CAD SYSTEM

DIMENSIONS SHOWN UNLESS OTHERWISE SPECIFIED

INCH	MILLIMETER
1/16	1.5748
1/8	3.1750
1/4	6.3500
3/8	9.5250
1/2	12.7000
5/8	15.8750
3/4	19.0500
7/8	22.2250
1	25.4000

DATE: 7/28/94

MOLEX (INCORPORATED) 2

SEE CHART SDA-44482-0000

VERTICAL HEADER ASSY. SELECTIVELY LOADED, MINI-FIT T.P.A. SERIES

REVISIONS ONLY ON CAD SYSTEM

