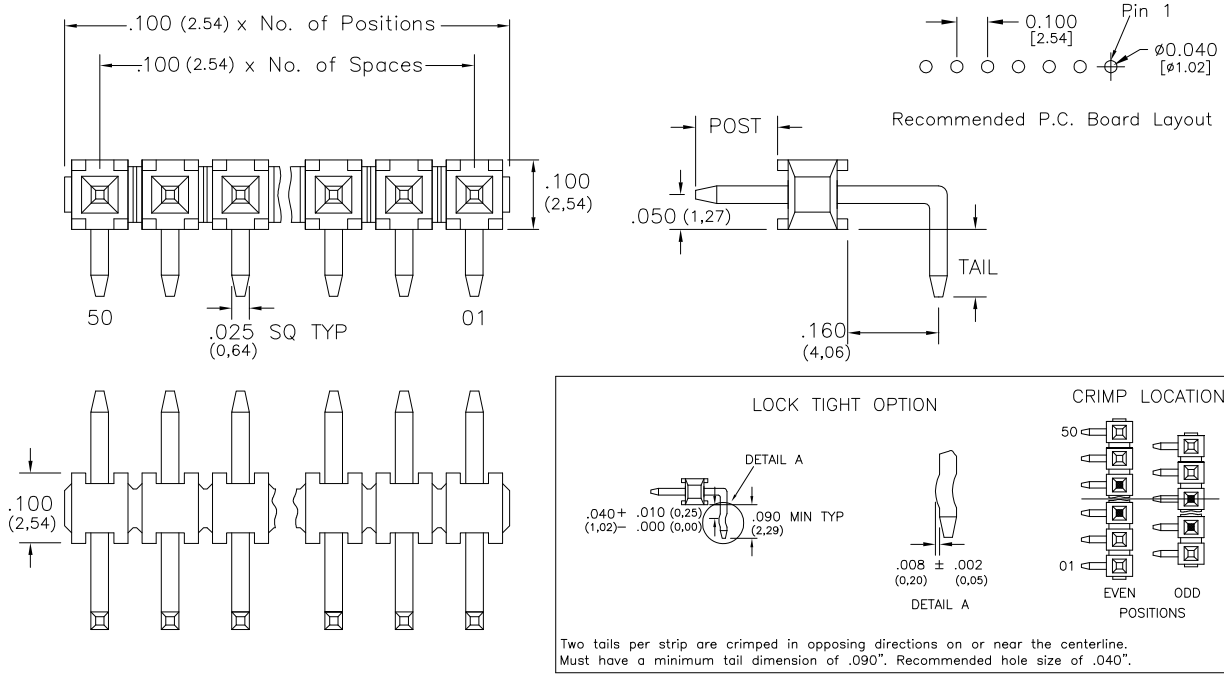


Major League Electronics .100 cl Low Profile Terminal Strip Header - Custom Right Angle - Elevated



Length (L) – Post Height (P) – .290 (7.37) = Tail Length (T) Tails may be clipped to achieve desired pin length

Ordering Information

LTSHCRE-1 [XX] - S - [XX] - [XX] - [XX] - [XX] - [XX] - [XX] - [XX] - LF

Pins Per Row
01 - 50
Row Specification
S = Single Row

Lead Free
Every Other Pin Filled (.200 Centers)
Leave blank if not needed
E = Filled
Polarized Position
Leave blank if not needed
If required, specify empty pin position, e.g. 012 for Pin 12
Lock Tight "LT" (Optional)
Leave blank if not needed
LT = With

Max Post Height		Pin Option		
	Length			
.100	2.54mm	.480	12.19mm	11
.150	3.81mm	.530	13.46mm	14
.250	6.35mm	.630	16.00mm	16
.350	8.89mm	.730	18.54mm	20
.450	11.43mm	.830	21.08mm	22
.550	13.97mm	.930	23.62mm	24
.650	16.51mm	1.030	26.16mm	26
.750	19.05mm	1.130	28.70mm	28
.850	21.59mm	1.230	31.24mm	30

Desired Post Height
Please specify
e.g. .100 (2.54) = 100

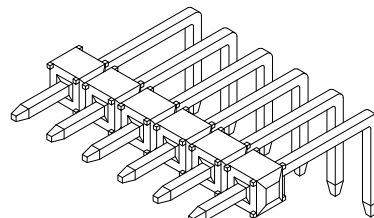
Plating Options	
G	- 10µ Gold on Contact area/Flash on Tail
T	- Matte Tin all Over
GT	- 10µ Gold on Contact Area / Matte Tin on Tail
H	- 30µ Gold on Contact Area / Matte Tin on Tail
F	- Gold Flash over Entire Pin

Specifications

Current Rating: 3.0 Ampere
Insulation Resistance: 1000MΩ Min.
Dielectric Withstanding: 600V AC
Contact Resistance: 20 mΩ Max.
Operating Temperature: -40°C to + 105°C
Max. Process Temperature:
Peak: 260°C up to 20 secs.
Process: 230°C up to 60 secs.
Wave: 260°C up to 6 secs.
Manual Solder: 350°C up to 5 secs.

Materials

Contact Material: Phosphor Bronze
Insulator Material: Nylon 6T
Plating: Au or Sn over 50µ" (1,27) Ni



Mates with:

BCSS,
BSSH,
BSSHQ,
BSSQ,
BSSQC,
BSSQM,
LBCSS,
LSMBC,
LSWSS,
SMBC,
SSHQ,
SSHQR,
SSHR,
SSHS,
SSHSM

Products cut to specific sizes are uncancellable/nonreturnable

Parts are subject to change without notice

LTSHCRE-1-S SERIES

.100 cl Single Row - Right Angle Elevated
Low Profile Terminal Strip Header - Custom

17 JAN 07

Scale
NTS

UNLESS OTHERWISE SPECIFIED
DIMENSIONS IN INCHES (MM)
TOLERANCES ARE:

ONE PLACE DECIMALS ±.100
TWO PLACE DECIMALS ±.010
THREE PLACE DECIMALS ±.005
FOUR PLACE DECIMALS ±.0020
ANGLES
±5°



4235 Earnings Way, New Albany, Indiana, 47150, USA
1-800-782-3486 (USA/Canada/Mexico)
Tel: 812-944-7244
Fax: 812-944-7268
E-mail: mle@mlelectronics.com
Web: www.mlelectronics.com

Edition
1

Sheet
1/1