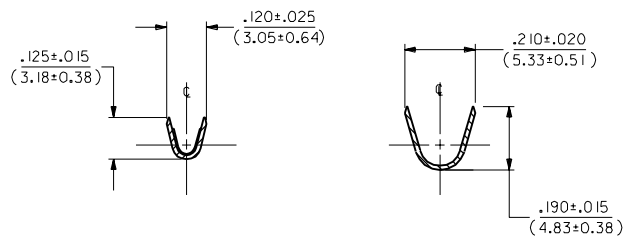
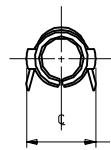
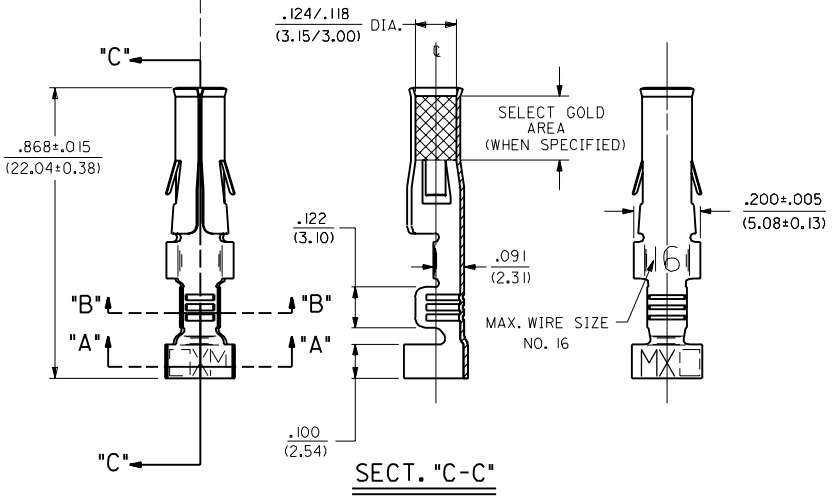


PART NO.	ENG. NO.
18-12-1222	2047-1(KP90)DL
18-12-1221	2047-1(KP90)I



SECT. "B-B"

SECT. "A-A"



SECT. "C-C"

**LEGEND**

2047-1(\*\*\*\*)\*

VERSION \_\_\_\_\_

.120/(3.05) MAX. DIA. INSULATION \_\_\_\_\_

P=PREPLATE \_\_\_\_\_

BLANK=POSTPLATE \_\_\_\_\_

FINISH CODE \_\_\_\_\_

FORM BLANK=CHAIN \_\_\_\_\_

L=LOOSE \_\_\_\_\_

- NOTES:**
- TERMINAL FOR USE WITH .125/(3.17) SERIES HOUSINGS AND WILL ACCEPT 16 THRU 18 AWG WIRE HAVING A .120/(3.05) MAX. DIAMETER INSULATION.
  - INSERTION FORCE: 6.0 LBS. MAX. WHEN TERMINAL IS INSERTED INTO .125/(3.17) DIA. CORE HOLE.
  - PULL OUT FORCE: 30 LBS. MIN. RETENTION IN HOUSING .

**FINISH CODES:**

901 HOT TIN DIP .000020/(0.0005) MIN.

**MATERIAL NOTES:**

1. CARTRIDGE BRASS, ALLOY #C26000;  
.013/(0.33) THICK, SPRING TEMPER

EI	REV.	DATE	BY	REVISIONS
				1. OBS. - (K555) & - (K555) L ECR UB 0379 RW GC 9/21/95 RW
				2. ADD SELECT AREA ECR #UO 0230 3-5-90 RW
				3. REVISE PER ECR US 1189 11-28-89 TRM
				4. REV. & REDRAWN ECR UB 1941 KBW 10-4-88 RW

DIMENSIONS SHOWN (METRIC) INCH		$\nabla = 0$	$\blacktriangledown = 0$	<b>REVISE ONLY ON CAD SYSTEM</b>	
UNLESS OTHERWISE SPECIFIED TOLERANCES: ANGULAR $\pm .05 \text{ TO } 10$				TITLE	
		INCH	METRIC	CRIMP TERMINAL, FEMALE, .125/(3.17) DIA 16-18 AWG .120/(3.05) DIA. INSUL.	
3 PLACE	$\pm .010$	---	---	MOLEX INCORPORATED	
2 PLACE	$\pm .014$	$\pm 0.25$		SHEET NO. DATE 1 OF 1 10 / 4 / 88	
1 PLACE	---	$\pm 0.35$		PART NO. DRWG. NO. SEE CHART SD-2047-1	
DRAFT WHERE APPLICABLE MUST REMAIN WITHIN DIMENSIONS		FILE NAME	SIV.	NO. 1 P.S.	
DRWG. BY: KBW	CHKD. BY: RW	S2047.IX1			
APP'D. BY: RAS	SCALE: 4 : 1	DWG.			
THIS DRAWING CONTAINS INFORMATION THAT IS PROPRIETARY TO MOLEX INC. AND SHOULD NOT BE USED WITHOUT WRITTEN PERMISSION.					