

**PLEASE CHECK WWW.MOLEX.COM FOR LATEST PART INFORMATION**

**Part Number:** [0399400308](#)  
**Status:** **Active**  
**Description:** 5.08mm (.200") Pitch Beau™ EuroMate™ Pluggable PCB Terminal Block, Dual Level, 270° Wire Entry, 8 Circuits

**Documents:**

[Drawing \(PDF\)](#) [RoHS Certificate of Compliance \(PDF\)](#)  
[Product Specification PS-39940-001 \(PDF\)](#)

**Agency Certification**

UL E48521

**General**

|                             |                        |
|-----------------------------|------------------------|
| Product Family              | Terminal Blocks        |
| Series                      | <a href="#">39940</a>  |
| Application                 | Wire-to-Board          |
| Comments                    | Gold plating available |
| Component Type              | Plug                   |
| Product Literature Order No | USA-264                |
| Product Name                | EuroMate™ Pluggable    |
| Type                        | Euro Block             |

**Physical**

|                               |                        |
|-------------------------------|------------------------|
| Circuits (Loaded)             | 8                      |
| Color - Resin                 | Black                  |
| Entry Angle                   | Horizontal             |
| Flammability                  | 94V-0                  |
| Lock to Mating Part           | None                   |
| Material - Resin              | Nylon                  |
| Number of Rows                | 2                      |
| Orientation                   | Vertical               |
| Panel Mount                   | No                     |
| Pitch - Mating Interface (in) | 0.200 In               |
| Pitch - Mating Interface (mm) | 5.08 mm                |
| Polarized to Mating Part      | Yes                    |
| Stackable                     | No                     |
| Temperature Range - Operating | 130°C                  |
| Termination Interface: Style  | Screw or Lug           |
| Wire Size AWG                 | 12, 14, 16, 18, 20, 22 |
| Wire Size mm²                 | 0.50 - 2.50            |

**Electrical**

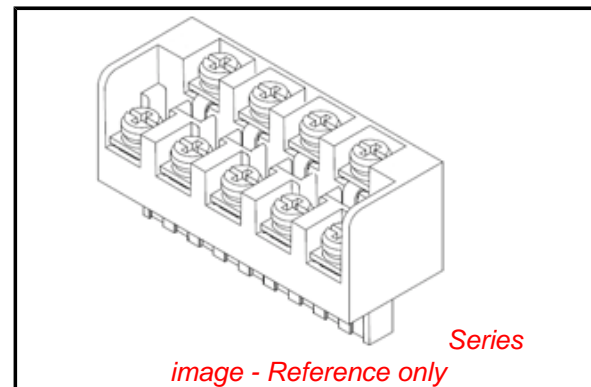
|                               |      |
|-------------------------------|------|
| Current - Maximum per Contact | 15A  |
| Voltage - Maximum             | 300V |

**Material Info**

|                 |        |
|-----------------|--------|
| Old Part Number | 940908 |
|-----------------|--------|

**Reference - Drawing Numbers**

|                       |              |
|-----------------------|--------------|
| Product Specification | PS-39940-001 |
| Sales Drawing         | SD-39940-005 |



**EU RoHS**

**ELV and RoHS Compliant**  
**REACH SVHC**  
 Not Reviewed  
**Halogen-Free Status**  
 Not Reviewed

**China RoHS**



**Need more information on product environmental compliance?**

Email [productcompliance@molex.com](mailto:productcompliance@molex.com)  
 For a multiple part number RoHS Certificate of Compliance, [click here](#)

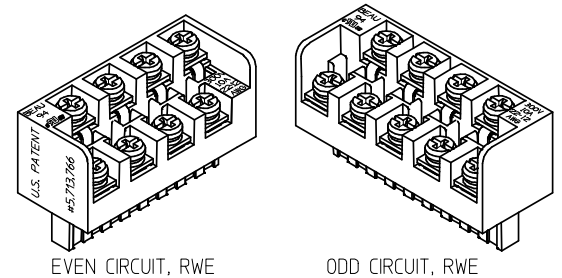
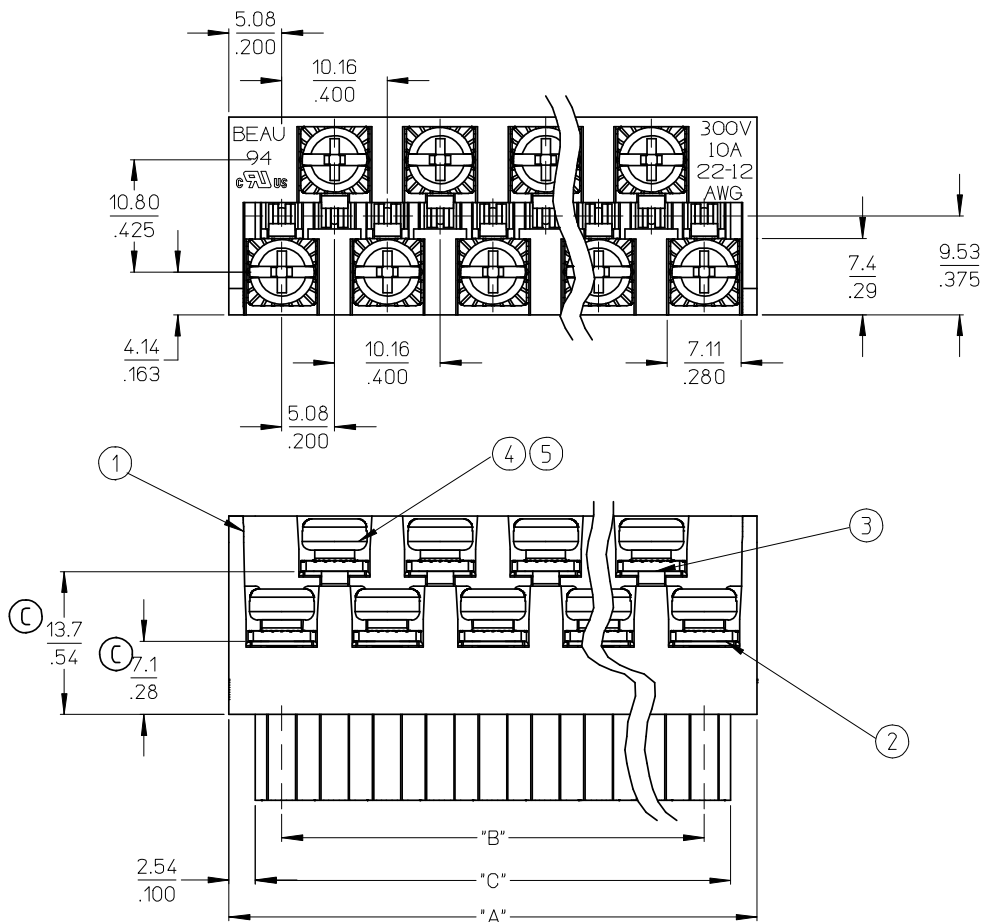
Please visit the [Contact Us](#) section for any non-product compliance questions.

**Search Parts in this Series**

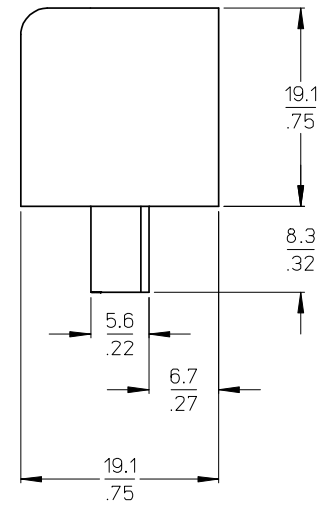
[39940Series](#)

**Mates With**

[39531-0008](#) , [39531-1008](#) , [39532-0008](#) , [39532-1008](#)



AUXILIARY VIEWS  
SCALE 1:1



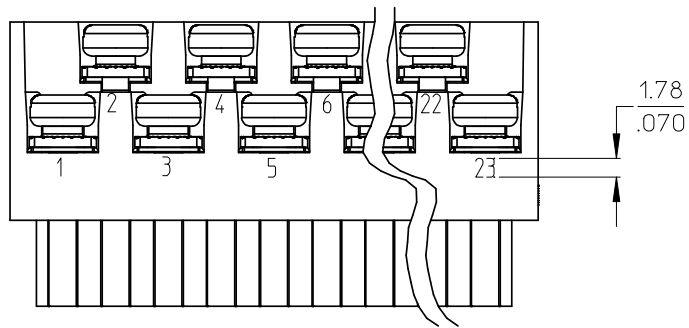
- NOTES:
1. MATERIAL: SEE TABLE
  2. FINISHES: SEE TABLE
  3. PRODUCT SPECIFICATION: NOT REQUIRED
  4. PACKAGING: NOT REQUIRED
  5. MATES WITH: MOST 5.08 (.200) PIN HEADERS
  6. "XX" REFERS TO THE QUANTITY OF CIRCUITS
  7. ROHS COMPLIANT

ODD CIRCUIT CONFIGURATION SHOWN

| ITEM | QTY.<br>(EVEN NO. OF<br>CIRCUITS) | QTY.<br>(ODD NO. OF<br>CIRCUITS) | DESCRIPTION             | MATERIAL      | FINISH        |
|------|-----------------------------------|----------------------------------|-------------------------|---------------|---------------|
| 5    | XX                                | XX                               | SCREW, M3.5 X .280      | STEEL         | ZINC CHROMATE |
| 4    | XX                                | XX                               | NUT, M3.5, HEX          | STEEL         | ZINC CHROMATE |
| 3    | XX/2                              | (XX-1)/2                         | REAR ROW TERM. (LONG)   | PHOS. BRONZE  | HOT TIN DIP   |
| 2    | XX/2                              | (XX+1)/2                         | FRONT ROW TERM. (SHORT) | PHOS. BRONZE  | HOT TIN DIP   |
| 1    | 1                                 | 1                                | BARRIER                 | THERMOPLASTIC | BLACK         |

|  |   |  |   |  |                                  |  |                    |  |   |  |                        |  |
|--|---|--|---|--|----------------------------------|--|--------------------|--|---|--|------------------------|--|
| <b>REVISED &amp; REDRAWN</b><br>EC NO: WNA2008-0391<br>DRWN: JENC INAS 2008/07/01<br>CH'KD: CYORK 2008/07/02<br>APPR: JMACNEIL 2008/07/07<br>REV DESCRIPTION | QUALITY SYMBOLS<br>▽=0<br>▽=0   |  | GENERAL TOLERANCES (UNLESS SPECIFIED)   |  | DIMENSION STYLE<br>MM/IN         |  | SCALE<br>2:1       |  | DESIGN UNITS<br>INCH  |  | THIRD ANGLE PROJECTION |  |
|  | 4 PLACES ± --- ± ---<br>3 PLACES ± --- ± .005<br>2 PLACES ± 0.13 ± .01<br>1 PLACE ± 0.3 ± --- |  | ANGULAR ± 2 °   |  | DRAWN BY<br>J. FARMER 2004/12/03 |  | DATE<br>2004/12/03 |  | TITLE<br>5.08/.200 PLUG ASSY, FWE WITH CLOSED ENDS (9409XX) |  |                        |  |
|  | DRAFT WHERE APPLICABLE MUST REMAIN WITHIN DIMENSIONS  |  | MATERIAL NO.<br>SEE SHEET 2   |  | APPROVED BY<br>GHR 2004/12/03    |  | DATE<br>2004/12/03 |  | MOLEX INCORPORATED  |  | SHEET NO.<br>1 OF 2    |  |
|  | SIZE<br>B   |  | THIS DRAWING CONTAINS INFORMATION THAT IS PROPRIETARY TO MOLEX INCORPORATED AND SHOULD NOT BE USED WITHOUT WRITTEN PERMISSION |  |                                  |  |                    |  |   |  |                        |  |

| NO. OF CIRC. "XX" | "A" DIM.     | "B" DIM.       | "C" <sup>+0.00</sup> <sub>-.25</sub> [ <sup>+0.000</sup> <sub>-.010</sub> ] | MATERIAL NO. (STANDARD) |
|-------------------|--------------|----------------|---|-------------------------|
| 03                | 20.3 [.80]   | 10.16 [.400]   | 15.2 [.60]  | 399400303               |
| 04                | 25.4 [1.00]  | 15.24 [.600]   | 20.3 [.80]  | 399400304               |
| 05                | 30.5 [1.20]  | 20.32 [.800]   | 25.4 [1.00]   | 399400305               |
| 06                | 35.6 [1.40]  | 25.40 [1.000]  | 30.5 [1.20]   | 399400306               |
| 07                | 40.6 [1.60]  | 30.48 [1.200]  | 35.6 [1.40]   | 399400307               |
| 08                | 45.7 [1.80]  | 35.56 [1.400]  | 40.6 [1.60]   | 399400308               |
| 09                | 50.8 [2.00]  | 40.64 [1.600]  | 45.7 [1.80]   | 399400309               |
| 10                | 55.9 [2.20]  | 45.72 [1.800]  | 50.8 [2.00]   | 399400310               |
| 11                | 61.0 [2.40]  | 50.80 [2.000]  | 55.9 [2.20]   | 399400311               |
| 12                | 66.0 [2.60]  | 55.88 [2.200]  | 61.0 [2.40]   | 399400312               |
| 13                | 71.1 [2.80]  | 60.96 [2.400]  | 66.0 [2.60]   | 399400313               |
| 14                | 76.2 [3.00]  | 66.04 [2.600]  | 71.1 [2.80]   | 399400314               |
| 15                | 81.3 [3.20]  | 71.12 [2.800]  | 76.2 [3.00]   | 399400315               |
| 16                | 86.4 [3.40]  | 76.20 [3.000]  | 81.3 [3.20]   | 399400316               |
| 17                | 91.4 [3.60]  | 81.28 [3.200]  | 86.4 [3.40]   | 399400317               |
| 18                | 96.5 [3.80]  | 86.36 [3.400]  | 91.4 [3.60]   | 399400318               |
| 19                | 101.6 [4.00] | 91.44 [3.600]  | 96.5 [3.80]   | 399400319               |
| 20                | 106.7 [4.20] | 96.52 [3.800]  | 101.6 [4.00]  | 399400320               |
| 21                | 111.8 [4.40] | 101.60 [4.000] | 106.7 [4.20]  | 399400321               |
| 22                | 116.9 [4.60] | 106.68 [4.200] | 111.8 [4.40]  | 399400322               |
| 23                | 121.9 [4.80] | 111.76 [4.400] | 116.8 [4.60]  | 399400323               |
| 24                | 127.0 [5.00] | 116.84 [4.600] | 121.9 [4.80]  | 399400324               |



OPTIONAL  
10A IMPRINTING  
(ODD CIRCUIT CONFIGURATION SHOWN)

|   |  |   |                       |                          |                    |   |                              |                     |  |
|---|--|---|-----------------------|--------------------------|--------------------|---|------------------------------|---------------------|--|
| SEE SHEET ONE<br>EEC NO: WNA2008-0391<br>DRWN: JENCINAS 2008/07/01<br>CHKD: CYORK 2008/07/02<br>APPR: JMACNEIL 2008/07/07 | REV DESCRIPTION<br>0 QUALITY SYMBOLS<br>1 = 0<br>2 = 0 | GENERAL TOLERANCES (UNLESS SPECIFIED)   |                       | DIMENSION STYLE<br>MM/IN | SCALE<br>2:1       | DESIGN UNITS<br>INCH  | THIRD ANGLE PROJECTION       |                     |  |
|   |  | 4 PLACES ± --- ± ---  | 3 PLACES ± --- ± .005 | DRAWN BY<br>J. FARMER    | DATE<br>2004/12/03 | TITLE<br>5.08/.200 PLUG ASSY, FWE WITH CLOSED ENDS (9409XX) |                              |                     |  |
|   |  | 2 PLACES ± 0.13 ± .01   | 1 PLACE ± 0.3 ± ---   | CHECKED BY<br>R. KEMP    | DATE<br>2004/12/03 | MOLEX INCORPORATED  |                              |                     |  |
|   |  | ANGULAR ± 2 °   |                       | APPROVED BY<br>GHR       | DATE<br>2004/12/03 | MATERIAL NO.<br>SEE CHART                                   | DOCUMENT NO.<br>SD-39940-005 | SHEET NO.<br>2 OF 2 |  |
| DRAFT WHERE APPLICABLE MUST REMAIN WITHIN DIMENSIONS  |  | THIS DRAWING CONTAINS INFORMATION THAT IS PROPRIETARY TO MOLEX INCORPORATED AND SHOULD NOT BE USED WITHOUT WRITTEN PERMISSION |                       |                          |                    |   |                              |                     |  |