

PV6 Series



Illuminated



Water Protection



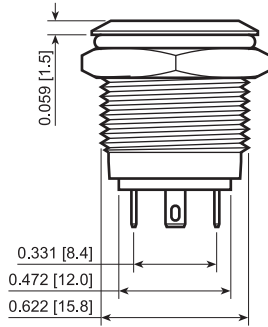
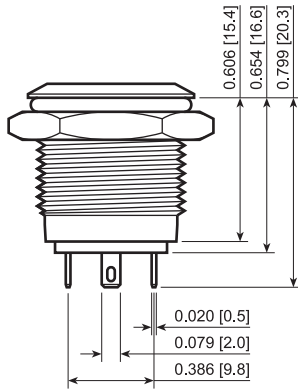
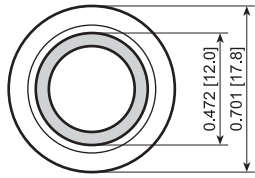
1 TON Heavy Duty



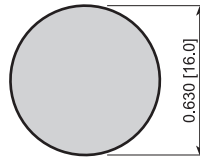
Front Panel Mount



www.DataSheet4U.com

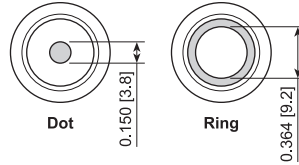


Suggested Panel Cutout



Maximum Panel Thickness 0.394 [10.0mm]

Illumination Options



FEATURES:

- Vandal and Water Resistant
- Long Life Expectancy

SPECIFICATIONS:

RATING: 2A 48VDC
ILLUMINATION BASE RATING:
 Red, Yellow, and Orange: 20mA 1.8V
 Blue, Green, and White: 20mA 2.8V
TEMPERATURE: -20°C to 70°C
CONTACT RESISTANCE: 50mΩ Max.
INSULATION RESISTANCE: 1,000MΩ Min.
DIELECTRIC STRENGTH: 2,000VAC
MECHANICAL LIFE: 1,000,000 Cycles
ELECTRICAL LIFE: 50,000 Cycles

MATERIALS:

BUTTON: Stainless Steel
 Nickel Plated Brass
BODY: Stainless Steel
 Nickel Plated Brass
BASE: PBT

ANTI-VANDAL



PV6F240SS-341

SPECIFICATIONS SUBJECT TO CHANGE WITHOUT NOTICE

Series	Actuator Options	Terminal	Function	Rating	Body Finish	Actuator Finish	Contact Material	Lens Style	Lens Color	Illumination Voltage
PV6	F - Flat	2 - Solder	4 - Off-(On)	0 - 2A 48VDC	N - Nickel S - Stainless Steel	N - Nickel S - Stainless Steel	None - Silver G - Gold	2 - Dot 3 - Ring	0 - White 1 - Red 2 - Orange 3 - Green 4 - Blue 5 - Yellow	1 - Base Voltage

Notes:
 This switch may require an external resistor to prevent damage to the LED.
 Additional material, illumination and marking options are available. Please ask your sales person.

EXAMPLE PART NUMBERS:

PV6F240SS-221 1P Off-(On)
 Flat Actuator, Orange Dot Illumination
PV6F240SS-331 1P Off-(On)
 Flat Actuator, Green Ring Illumination
PV6F240SS-341 1P Off-(On)
 Flat Actuator, Blue Ring Illumination

www.DataSheet4U.com



Ph: 503-297-8878 • Fax: 503-297-8879

P.O. Box 25110 • Portland, OR 97298 USA • www.lambind.com