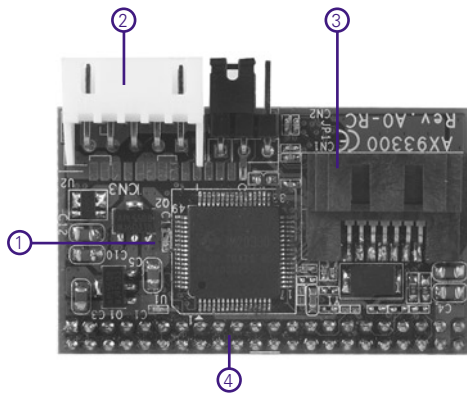


AX93300

PATA to SATA Converter Module Card



1. JMicron JM20330 chipset
2. SATA power connector
3. SATA data channel connector
4. Pins for 44-pin PATA connector

Introduction

The AX93300 is a DOM type adapter card for PATA to SATA interface communication. It breaks the limitation of SATA storage device support on concurrent platform usage, and also enhances storage efficiency. In the meantime, this module is suitable for NA-100 network appliance.

Specifications

Specification	
Interface	IDE
Chipset	JMicron JM20330
EIDE	ATA 66/100/133 pin (44-pins)
S-ATA Connector	Supports data and power pin connector Supports S-ATA Gen 1 interface of 1.5GBps Compliance with S-ATA 1.0a specifications

Mechanical/ Environmental

Other Feature	* Transparent to BIOS or OS, no driver is necessary * Can be installed in the NA-0043 series, NA-806 series
OS Compatibility	Linux Red Hat, Linux kernel 2.4 & 2.6 and Windows® XP/2000
Operating Temp.	0° ~ +60°C (32°F ~ 140°F)
Storage Temp.	-20° ~ +70°C (-4°F ~ +158°F)
Humidity	10% - 95% RH, non-condensing
Dimensions	46 mm x 27 mm

Features

- Supports SATA storage device connection through IDE channel of main board
- PATA 44-pin to SATA Gen 1, and supports 2.5 SATA hard drive
- Suitable for NA-100

Overview

SOHO Series

SMB Series

Accessories

Ordering Information

AX93300	PATA to SATA converter module
---------	-------------------------------

Packing List

1 x SATA power cable, 1 x SATA data cable

Dimensions

