

PLEASE CHECK WWW.MOLEX.COM FOR LATEST PART INFORMATION

Part Number: [0878970526](#)
Status: **Active**
Overview: [kk](#)
Description: 2.54mm (.100") Pitch KK® Header, Right Angle, Through Hole, Breakaway, 5 Circuits, 2.54µm (100µ") Tin (Sn) Plating, without Cap, Tube Packaging, Lead-free

Documents:

[Drawing \(PDF\)](#) [RoHS Certificate of Compliance \(PDF\)](#)
[Product Specification PS-87920-019 \(PDF\)](#)

General

Product Family	PCB Headers
Series	87897
Application	Board-to-Board, Wire-to-Board
Overview	kk
Product Name	KK®

Physical

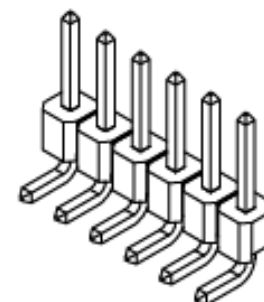
Breakaway	Yes
Circuits (Loaded)	5
Circuits (maximum)	5
Color - Resin	Black
First Mate / Last Break	No
Glow-Wire Compliant	No
Guide to Mating Part	No
Keying to Mating Part	None
Lock to Mating Part	None
Material - Metal	Copper Alloy
Material - Plating Mating	Tin
Material - Resin	High Temperature Thermoplastic
Number of Rows	1
Orientation	Right Angle
PC Tail Length (in)	0.090 In
PC Tail Length (mm)	2.29 mm
PCB Locator	No
PCB Retention	None
Packaging Type	Tube
Pitch - Mating Interface (in)	0.100 In
Pitch - Mating Interface (mm)	2.54 mm
Pitch - Term. Interface (in)	0.100 In
Pitch - Term. Interface (mm)	2.54 mm
Plating min: Mating (µin)	100
Plating min: Mating (µm)	2.54
Polarized to Mating Part	No
Polarized to PCB	No
Shrouded	No
Stackable	No
Temperature Range - Operating	-55°C to +105°C
Termination Interface: Style	Through Hole

Electrical

Current - Maximum per Contact	3A
Voltage - Maximum	250V

Solder Process Data

Duration at Max. Process Temperature (seconds)	10
--	----



Series

image - Reference only

EU RoHS

ELV and RoHS Compliant
REACH SVHC
 Not Reviewed
Halogen-Free Status
 Not Reviewed

China RoHS



Need more information on product environmental compliance?

Email productcompliance@molex.com
 For a multiple part number RoHS Certificate of Compliance, [click here](#)

Please visit the [Contact Us](#) section for any non-product compliance questions.

Search Parts in this Series

[87897Series](#)

Mates With

KK® PCB Receptacles [4455](#). SL™ IDT Housings [70430](#) , [7720](#), [70400](#). C-Grid® PCB Receptacles [90147](#), [90148](#)

Lead-free Process Capability	Wave Capable (TH only)
Max. Cycles at Max. Process Temperature	3
Process Temperature max. C	260

Material Info

Reference - Drawing Numbers

Packaging Specification	PK-89990-516
Product Specification	PS-87920-019
Sales Drawing	SD-87897-010

This document was generated on 05/25/2010

PLEASE CHECK WWW.MOLEX.COM FOR LATEST PART INFORMATION

10 9 8 7 6 5 4 3 2 1

F

E

D

C

B

A

F

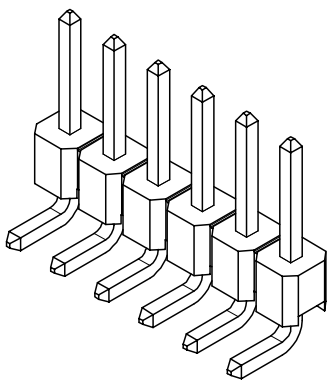
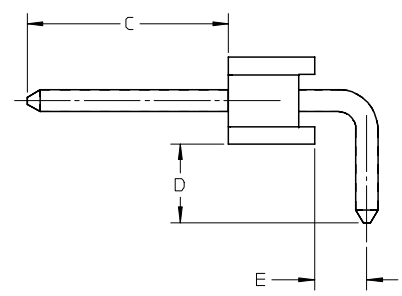
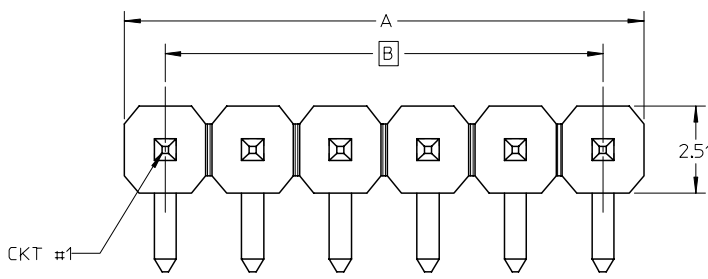
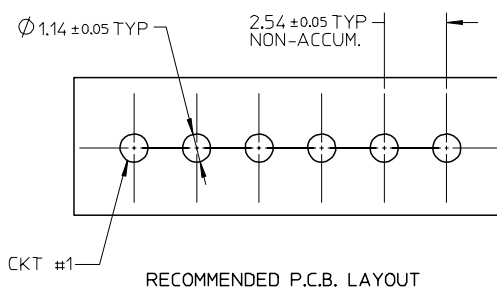
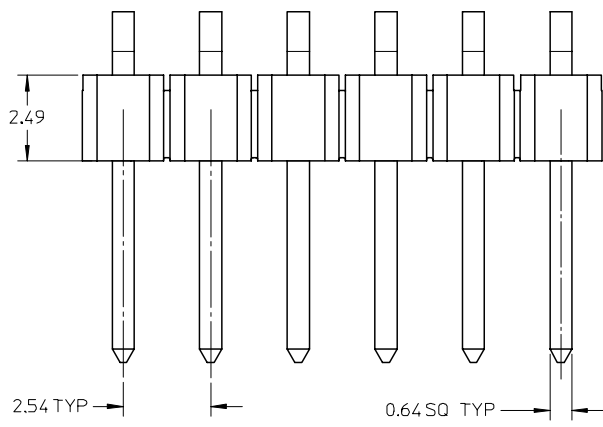
E

D

C

B

A



NOTES:

1. MATERIAL:
 - HOUSING: HIGH TEMP. THERMOPLASTIC UL94V-0,
 - COLOR: BLACK
 - TERMINAL: COPPER ALLOY
2. PLATING TYPE:
 - (1) : GOLD FLASH OVER
50 MICRO INCHES MIN. NICKEL OVERALL.
 - (2) : 1 MICRO INCHES MIN. GOLD PLATE ON CONTACT AND
75 MICRO INCHES MIN. TIN ON SOLDER TAIL OVER
50 MICRO INCHES MIN. NICKEL OVERALL.
 - (3) : 10 MICRO INCHES MIN. GOLD PLATE ON CONTACT AND
75 MICRO INCHES MIN. TIN ON SOLDER TAIL OVER
50 MICRO INCHES MIN. NICKEL OVERALL.
 - (4) : 15 MICRO INCHES MIN. GOLD PLATE ON CONTACT AND
75 MICRO INCHES MIN. TIN ON SOLDER TAIL OVER
50 MICRO INCHES MIN. NICKEL OVERALL.
 - (5) : 30 MICRO INCHES MIN. GOLD PLATE ON CONTACT AND
75 MICRO INCHES MIN. TIN ON SOLDER TAIL OVER
50 MICRO INCHES MIN. NICKEL OVERALL.
 - (6) : 100 MICRO INCHES MIN. TIN IN SELECTED AREA OVER
50 MICRO INCHES MIN. NICKEL OVERALL.
3. PIN PUSHOUT FORCE: 1KG MIN IN EITHER DIRECTION
4. THE ABOVE 6 CKT IS FOR ILLUSTRATION PURPOSE ONLY.
5. FOR PACKAGING OPTION PLEASE REFER TO THE TABLE.

9 8 7 6 5 4 3 2 1

EWR#1086 EC NO: S2007-0876 DRWN: CWLAM CHKD: KWLEE APPR: KWLEE	2007/04/09 2007/04/13 2007/04/14	QUALITY SYMBOLS	GENERAL TOLERANCES (UNLESS SPECIFIED)	DIMENSION STYLE	SCALE	DESIGN UNITS	THIRD ANGLE PROJECTION
		$\nabla = 0$ $\nabla C = 0$	mm INCH	MM ONLY	NTS	METRIC	
			4 PLACES ± --- ± --- 3 PLACES ± --- ± --- 2 PLACES ± 0.2 ± --- 1 PLACE ± --- ± ---	DRAWN BY DATE YLQ1A0 2005/01/24 CHECKED BY DATE PTL IM 2005/02/01 APPROVED BY DATE SCLOW 2005/02/01	TITLE	SALES DRAWING SINGLE ROW SINGLE WAFER 2.54MM PITCH, R/A	
			ANGULAR ± 3 °	MATERIAL NO. SEE TABLE	MOLEX INCORPORATED	DOCUMENT NO. SD-87897-010	SHEET NO. 1 OF 15
A1	REV		DRAFT WHERE APPLICABLE MUST REMAIN WITHIN DIMENSIONS	SIZE	THIS DRAWING CONTAINS INFORMATION THAT IS PROPRIETARY TO MOLEX INCORPORATED AND SHOULD NOT BE USED WITHOUT WRITTEN PERMISSION		

PACKAGING OPTION PART NO.						CKT SIZE	VOID POSITION	PLATING TYPE	DIMENSION				
TRY WITHOUT CAP	TRY WITH CAP	TUBE WITHOUT CAP	TUBE WITH CAP	TAPE & REEL WITHOUT CAP	TAPE & REEL WITH CAP				A	B	C	D	E
F	87897-2501	-----	87897-2521	-----	-----	25	----	1	63.50	60.96	5.84	2.29	1.52
	87897-2502	-----	87897-2522	-----	-----	25	----	2	63.50	60.96	5.84	2.29	1.52
	87897-2503	-----	87897-2523	-----	-----	25	----	3	63.50	60.96	5.84	2.29	1.52
	87897-2504	-----	87897-2524	-----	-----	25	----	4	63.50	60.96	5.84	2.29	1.52
	87897-2505	-----	87897-2525	-----	-----	25	----	5	63.50	60.96	5.84	2.29	1.52
	87897-2506	-----	87897-2526	-----	-----	25	----	6	63.50	60.96	5.84	2.29	1.52
E													
	87897-2601	-----	87897-2621	-----	-----	26	----	1	66.04	63.50	5.84	2.29	1.52
	87897-2602	-----	87897-2622	-----	-----	26	----	2	66.04	63.50	5.84	2.29	1.52
	87897-2603	-----	87897-2623	-----	-----	26	----	3	66.04	63.50	5.84	2.29	1.52
	87897-2604	-----	87897-2624	-----	-----	26	----	4	66.04	63.50	5.84	2.29	1.52
D	87897-2605	-----	87897-2625	-----	-----	26	----	5	66.04	63.50	5.84	2.29	1.52
	87897-2606	-----	87897-2626	-----	-----	26	----	6	66.04	63.50	5.84	2.29	1.52
	87897-2701	-----	87897-2721	-----	-----	27	----	1	68.58	66.04	5.84	2.29	1.52
	87897-2702	-----	87897-2722	-----	-----	27	----	2	68.58	66.04	5.84	2.29	1.52
C	87897-2703	-----	87897-2723	-----	-----	27	----	3	68.58	66.04	5.84	2.29	1.52
	87897-2704	-----	87897-2724	-----	-----	27	----	4	68.58	66.04	5.84	2.29	1.52
	87897-2705	-----	87897-2725	-----	-----	27	----	5	68.58	66.04	5.84	2.29	1.52
	87897-2706	-----	87897-2726	-----	-----	27	----	6	68.58	66.04	5.84	2.29	1.52
B													

A	EWR#1086 EC NO: S2007-0876 DRWN: CWLAM 2007/04/09 CHKD: KWLEE 2007/04/13 APPR: KWLEE 2007/04/14	QUALITY SYMBOLS ▽=0 ▽C=0	GENERAL TOLERANCES (UNLESS SPECIFIED)		DIMENSION STYLE MM ONLY		SCALE NTS	DESIGN UNITS METRIC	THIRD ANGLE PROJECTION			
					DRAWN BY YLQ1A0		DATE 2005/01/24		TITLE SALES DRAWING SINGLE ROW SINGLE WAFER 2.54MM PITCH, R/A			
					CHECKED BY PTL IM		DATE 2005/02/01					
					APPROVED BY SCLOW		DATE 2005/02/01		MATERIAL NO.		DOCUMENT NO.	
A1		REV		DRAFT WHERE APPLICABLE MUST REMAIN WITHIN DIMENSIONS		SEE TABLE		SD-87897-010		10 OF 15		

PACKAGING OPTION PART NO.										DIMENSION				
TRY WITHOUT CAP	TRY WITH CAP	TUBE WITHOUT CAP	TUBE WITH CAP	TAPE & REEL WITHOUT CAP	TAPE & REEL WITH CAP	CKT SIZE	VOID POSITION	PLATING TYPE	A	B	C	D	E	
F	87897-2801	-----	87897-2821	-----	-----	28	----	1	71.12	68.58	5.84	2.29	1.52	
	87897-2802	-----	87897-2822	-----	-----	28	----	2	71.12	68.58	5.84	2.29	1.52	
	87897-2803	-----	87897-2823	-----	-----	28	----	3	71.12	68.58	5.84	2.29	1.52	
	87897-2804	-----	87897-2824	-----	-----	28	----	4	71.12	68.58	5.84	2.29	1.52	
	87897-2805	-----	87897-2825	-----	-----	28	----	5	71.12	68.58	5.84	2.29	1.52	
	87897-2806	-----	87897-2826	-----	-----	28	----	6	71.12	68.58	5.84	2.29	1.52	
E														
	87897-2901	-----	87897-2921	-----	-----	29	----	1	73.66	71.12	5.84	2.29	1.52	
	87897-2902	-----	87897-2922	-----	-----	29	----	2	73.66	71.12	5.84	2.29	1.52	
	87897-2903	-----	87897-2923	-----	-----	29	----	3	73.66	71.12	5.84	2.29	1.52	
	87897-2904	-----	87897-2924	-----	-----	29	----	4	73.66	71.12	5.84	2.29	1.52	
D	87897-2905	-----	87897-2925	-----	-----	29	----	5	73.66	71.12	5.84	2.29	1.52	
	87897-2906	-----	87897-2926	-----	-----	29	----	6	73.66	71.12	5.84	2.29	1.52	
	87897-3001	-----	87897-3021	-----	-----	30	----	1	76.20	73.66	5.84	2.29	1.52	
	87897-3002	-----	87897-3022	-----	-----	30	----	2	76.20	73.66	5.84	2.29	1.52	
C	87897-3003	-----	87897-3023	-----	-----	30	----	3	76.20	73.66	5.84	2.29	1.52	
	87897-3004	-----	87897-3024	-----	-----	30	----	4	76.20	73.66	5.84	2.29	1.52	
	87897-3005	-----	87897-3025	-----	-----	30	----	5	76.20	73.66	5.84	2.29	1.52	
	87897-3006	-----	87897-3026	-----	-----	30	----	6	76.20	73.66	5.84	2.29	1.52	
B														

EWB#1086 EC NO: S2007-0876 DRWN: CWLAM 2007/04/09 CHKD: KWLEE 2007/04/13 APPR: KWLEE 2007/04/14	QUALITY SYMBOLS =0 =0	GENERAL TOLERANCES (UNLESS SPECIFIED)		DIMENSION STYLE MM ONLY		SCALE NTS	DESIGN UNITS METRIC	THIRD ANGLE PROJECTION				
		4 PLACES ± --- ± --- 3 PLACES ± --- ± --- 2 PLACES ± 0.2 ± --- 1 PLACE ± --- ± ---		mm INCH		DRAWN BY YLQ1A0	DATE 2005/01/24	TITLE SALES DRAWING SINGLE ROW SINGLE WAFER 2.54MM PITCH, R/A				
		ANGULAR ± 3 °		CHECKED BY PTL IM	DATE 2005/02/01	APPROVED BY SCLOW		DATE 2005/02/01	MOLEX INCORPORATED			
		DRAFT WHERE APPLICABLE MUST REMAIN WITHIN DIMENSIONS		SEE TABLE		MATERIAL NO.	DOCUMENT NO. SD-87897-010	SHEET NO. 11 OF 15				


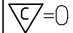
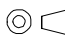
PACKAGING OPTION PART NO.						CKT SIZE	VOID POSITION	PLATING TYPE	DIMENSION				
TRY WITHOUT CAP	TRY WITH CAP	TUBE WITHOUT CAP	TUBE WITH CAP	TAPE & REEL WITHOUT CAP	TAPE & REEL WITH CAP				A	B	C	D	E
F	87897-3101	-----	87897-3121	-----	-----	31	----	1	78.74	76.20	5.84	2.29	1.52
	87897-3102	-----	87897-3122	-----	-----	31	----	2	78.74	76.20	5.84	2.29	1.52
	87897-3103	-----	87897-3123	-----	-----	31	----	3	78.74	76.20	5.84	2.29	1.52
	87897-3104	-----	87897-3124	-----	-----	31	----	4	78.74	76.20	5.84	2.29	1.52
	87897-3105	-----	87897-3125	-----	-----	31	----	5	78.74	76.20	5.84	2.29	1.52
	87897-3106	-----	87897-3126	-----	-----	31	----	6	78.74	76.20	5.84	2.29	1.52
E													
	87897-3201	-----	87897-3221	-----	-----	32	----	1	81.28	78.74	5.84	2.29	1.52
	87897-3202	-----	87897-3222	-----	-----	32	----	2	81.28	78.74	5.84	2.29	1.52
	87897-3203	-----	87897-3223	-----	-----	32	----	3	81.28	78.74	5.84	2.29	1.52
	87897-3204	-----	87897-3224	-----	-----	32	----	4	81.28	78.74	5.84	2.29	1.52
D	87897-3205	-----	87897-3225	-----	-----	32	----	5	81.28	78.74	5.84	2.29	1.52
	87897-3206	-----	87897-3226	-----	-----	32	----	6	81.28	78.74	5.84	2.29	1.52
	87897-3301	-----	87897-3321	-----	-----	33	----	1	83.82	81.28	5.84	2.29	1.52
	87897-3302	-----	87897-3322	-----	-----	33	----	2	83.82	81.28	5.84	2.29	1.52
C	87897-3303	-----	87897-3323	-----	-----	33	----	3	83.82	81.28	5.84	2.29	1.52
	87897-3304	-----	87897-3324	-----	-----	33	----	4	83.82	81.28	5.84	2.29	1.52
	87897-3305	-----	87897-3325	-----	-----	33	----	5	83.82	81.28	5.84	2.29	1.52
	87897-3306	-----	87897-3326	-----	-----	33	----	6	83.82	81.28	5.84	2.29	1.52
B													

A	EWR#1086 EC NO: S2007-0876 DRWN: CWLAM 2007/04/09 CHKD: KWLEE 2007/04/13 APPR: KWLEE 2007/04/14	QUALITY SYMBOLS ▽=0 ▽=0	GENERAL TOLERANCES (UNLESS SPECIFIED) <table border="1"> <tr><th colspan="2">mm</th><th colspan="2">INCH</th></tr> <tr><td>4 PLACES</td><td>± ---</td><td>± ---</td><td>± ---</td></tr> <tr><td>3 PLACES</td><td>± ---</td><td>± ---</td><td>± ---</td></tr> <tr><td>2 PLACES</td><td>± 0.2</td><td>± ---</td><td>± ---</td></tr> <tr><td>1 PLACE</td><td>± ---</td><td>± ---</td><td>± ---</td></tr> </table>	mm		INCH		4 PLACES	± ---	± ---	± ---	3 PLACES	± ---	± ---	± ---	2 PLACES	± 0.2	± ---	± ---	1 PLACE	± ---	± ---	± ---	DIMENSION STYLE MM ONLY DRAWN BY YLQ1A0 DATE 2005/01/24 CHECKED BY PTL IM DATE 2005/02/01 APPROVED BY SCLOW DATE 2005/02/01	SCALE NTS DESIGN UNITS METRIC THIRD ANGLE PROJECTION	TITLE SALES DRAWING SINGLE ROW SINGLE WAFER 2.54MM PITCH, R/A	MOLEX INCORPORATED	SHEET NO. 12 OF 15
				mm		INCH																						
				4 PLACES	± ---	± ---	± ---																					
				3 PLACES	± ---	± ---	± ---																					
2 PLACES	± 0.2	± ---	± ---																									
1 PLACE	± ---	± ---	± ---																									
DRAFT WHERE APPLICABLE MUST REMAIN WITHIN DIMENSIONS	SEE TABLE	DOCUMENT NO. SD-87897-010																										
			THIS DRAWING CONTAINS INFORMATION THAT IS PROPRIETARY TO MOLEX INCORPORATED AND SHOULD NOT BE USED WITHOUT WRITTEN PERMISSION																									
A1	REV	DESCRIPTION	MATERIAL NO.	DATE	TITLE	SHEET NO.																						

PACKAGING OPTION PART NO.						CKT SIZE	VOID POSITION	PLATING TYPE	DIMENSION				
TRY WITHOUT CAP	TRY WITH CAP	TUBE WITHOUT CAP	TUBE WITH CAP	TAPE & REEL WITHOUT CAP	TAPE & REEL WITH CAP				A	B	C	D	E
F	87897-3401	-----	87897-3421	-----	-----	34	----	1	86.36	83.82	5.84	2.29	1.52
	87897-3402	-----	87897-3422	-----	-----	34	----	2	86.36	83.82	5.84	2.29	1.52
	87897-3403	-----	87897-3423	-----	-----	34	----	3	86.36	83.82	5.84	2.29	1.52
	87897-3404	-----	87897-3424	-----	-----	34	----	4	86.36	83.82	5.84	2.29	1.52
	87897-3405	-----	87897-3425	-----	-----	34	----	5	86.36	83.82	5.84	2.29	1.52
	87897-3406	-----	87897-3426	-----	-----	34	----	6	86.36	83.82	5.84	2.29	1.52
E													
	87897-3501	-----	87897-3521	-----	-----	35	----	1	88.90	86.36	5.84	2.29	1.52
	87897-3502	-----	87897-3522	-----	-----	35	----	2	88.90	86.36	5.84	2.29	1.52
	87897-3503	-----	87897-3523	-----	-----	35	----	3	88.90	86.36	5.84	2.29	1.52
	87897-3504	-----	87897-3524	-----	-----	35	----	4	88.90	86.36	5.84	2.29	1.52
D	87897-3505	-----	87897-3525	-----	-----	35	----	5	88.90	86.36	5.84	2.29	1.52
	87897-3506	-----	87897-3526	-----	-----	35	----	6	88.90	86.36	5.84	2.29	1.52
	87897-3601	-----	87897-3621	-----	-----	36	----	1	91.44	88.90	5.84	2.29	1.52
	87897-3602	-----	87897-3622	-----	-----	36	----	2	91.44	88.90	5.84	2.29	1.52
C	87897-3603	-----	87897-3623	-----	-----	36	----	3	91.44	88.90	5.84	2.29	1.52
	87897-3604	-----	87897-3624	-----	-----	36	----	4	91.44	88.90	5.84	2.29	1.52
	87897-3605	-----	87897-3625	-----	-----	36	----	5	91.44	88.90	5.84	2.29	1.52
	87897-3606	-----	87897-3626	-----	-----	36	----	6	91.44	88.90	5.84	2.29	1.52
B													

EWB#1086 EC NO: S2007-0876 DRWN: CWLAM 2007/04/09 CHKD: KWLEE 2007/04/13 APPR: KWLEE 2007/04/14	QUALITY SYMBOLS ▽=0 ▽=0	GENERAL TOLERANCES (UNLESS SPECIFIED)		DIMENSION STYLE MM ONLY		SCALE NTS	DESIGN UNITS METRIC	THIRD ANGLE PROJECTION			
		4 PLACES ± --- ± --- 3 PLACES ± --- ± --- 2 PLACES ± 0.2 ± --- 1 PLACE ± --- ± ---		mm INCH		DRAWN BY YLQ1A0	DATE 2005/01/24	TITLE SALES DRAWING SINGLE ROW SINGLE WAFER 2.54MM PITCH, R/A			
		ANGULAR ± 3 °		CHECKED BY PTL IM	DATE 2005/02/01	APPROVED BY SCLOW			DATE 2005/02/01	MOLEX INCORPORATED	
		DRAFT WHERE APPLICABLE MUST REMAIN WITHIN DIMENSIONS		MATERIAL NO. SEE TABLE		DOCUMENT NO. SD-87897-010	SHEET NO. 13 OF 15				

PACKAGING OPTION PART NO.										CKT SIZE	VOID POSITION	PLATING TYPE	DIMENSION				
TRY WITHOUT CAP	TRY WITH CAP	TUBE WITHOUT CAP	TUBE WITH CAP	TAPE & REEL WITHOUT CAP	TAPE & REEL WITH CAP	A	B	C	D				E				
F	87897-3701	-----	87897-3721	-----	-----	-----	37	----	1	93.98	91.44	5.84	2.29	1.52			
	87897-3702	-----	87897-3722	-----	-----	-----	37	----	2	93.98	91.44	5.84	2.29	1.52			
	87897-3703	-----	87897-3723	-----	-----	-----	37	----	3	93.98	91.44	5.84	2.29	1.52			
	87897-3704	-----	87897-3724	-----	-----	-----	37	----	4	93.98	91.44	5.84	2.29	1.52			
	87897-3705	-----	87897-3725	-----	-----	-----	37	----	5	93.98	91.44	5.84	2.29	1.52			
	87897-3706	-----	87897-3726	-----	-----	-----	37	----	6	93.98	91.44	5.84	2.29	1.52			
E																	
	87897-3801	-----	87897-3821	-----	-----	-----	38	----	1	96.52	93.98	5.84	2.29	1.52			
	87897-3802	-----	87897-3822	-----	-----	-----	38	----	2	96.52	93.98	5.84	2.29	1.52			
	87897-3803	-----	87897-3823	-----	-----	-----	38	----	3	96.52	93.98	5.84	2.29	1.52			
	87897-3804	-----	87897-3824	-----	-----	-----	38	----	4	96.52	93.98	5.84	2.29	1.52			
D	87897-3805	-----	87897-3825	-----	-----	-----	38	----	5	96.52	93.98	5.84	2.29	1.52			
	87897-3806	-----	87897-3826	-----	-----	-----	38	----	6	96.52	93.98	5.84	2.29	1.52			
	87897-3901	-----	87897-3921	-----	-----	-----	39	----	1	99.06	96.52	5.84	2.29	1.52			
	87897-3902	-----	87897-3922	-----	-----	-----	39	----	2	99.06	96.52	5.84	2.29	1.52			
C	87897-3903	-----	87897-3923	-----	-----	-----	39	----	3	99.06	96.52	5.84	2.29	1.52			
	87897-3904	-----	87897-3924	-----	-----	-----	39	----	4	99.06	96.52	5.84	2.29	1.52			
	87897-3905	-----	87897-3925	-----	-----	-----	39	----	5	99.06	96.52	5.84	2.29	1.52			
	87897-3906	-----	87897-3926	-----	-----	-----	39	----	6	99.06	96.52	5.84	2.29	1.52			
B																	

EWB#1086 EC NO: S2007-0876 DRWN: CWLAM 2007/04/09 CHKD: KWLEE 2007/04/13 APPR: KWLEE 2007/04/14	QUALITY SYMBOLS  = 0  = 0	GENERAL TOLERANCES (UNLESS SPECIFIED)		DIMENSION STYLE MM ONLY		SCALE NTS	DESIGN UNITS METRIC	 THIRD ANGLE PROJECTION			
		4 PLACES ± --- ± --- 3 PLACES ± --- ± --- 2 PLACES ± 0.2 ± --- 1 PLACE ± --- ± ---		mm INCH		DRAWN BY YLQ1A0	DATE 2005/01/24	TITLE SALES DRAWING SINGLE ROW SINGLE WAFER 2.54MM PITCH, R/A			
		ANGULAR ± 3 °		DRAFT WHERE APPLICABLE MUST REMAIN WITHIN DIMENSIONS		CHECKED BY PTL IM	DATE 2005/02/01	MOLEX INCORPORATED			
		MATERIAL NO.		SEE TABLE		APPROVED BY SCLOW	DATE 2005/02/01	DOCUMENT NO. SD-87897-010	SHEET NO. 14 OF 15		

F	PACKAGING OPTION PART NO.						CKT SIZE	VOID POSITION	PLATING TYPE	DIMENSION				
	TRY WITHOUT CAP	TRY WITH CAP	TUBE WITHOUT CAP	TUBE WITH CAP	TAPE & REEL WITHOUT CAP	TAPE & REEL WITH CAP				A	B	C	D	E
	87897-4001	-----	87897-4021	-----	-----	-----				40	----	1	101.6	99.06
87897-4002	-----	87897-4022	-----	-----	-----	40	----	2	101.6	99.06	5.84	2.29	1.52	
87897-4003	-----	87897-4023	-----	-----	-----	40	----	3	101.6	99.06	5.84	2.29	1.52	
87897-4004	-----	87897-4024	-----	-----	-----	40	----	4	101.6	99.06	5.84	2.29	1.52	
87897-4005	-----	87897-4025	-----	-----	-----	40	----	5	101.6	99.06	5.84	2.29	1.52	
87897-4006	-----	87897-4026	-----	-----	-----	40	----	6	101.6	99.06	5.84	2.29	1.52	
E														
D														
C														
B														

A	EWR#1086 EC NO: S2007-0876 DRWN: CWLAM CHKD: KWLEE APPR: KWLEE	2007/04/09 2007/04/13 2007/04/14 DESCRIPTION REV	QUALITY SYMBOLS ▽=0 ◻=0	GENERAL TOLERANCES (UNLESS SPECIFIED)	DIMENSION STYLE MM ONLY	SCALE NTS	DESIGN UNITS METRIC	THIRD ANGLE PROJECTION																														
				<table border="1"> <tr><th></th><th>mm</th><th>INCH</th></tr> <tr><td>4 PLACES</td><td>± ---</td><td>± ---</td></tr> <tr><td>3 PLACES</td><td>± ---</td><td>± ---</td></tr> <tr><td>2 PLACES</td><td>± 0.2</td><td>± ---</td></tr> <tr><td>1 PLACE</td><td>± ---</td><td>± ---</td></tr> <tr><td colspan="3">ANGULAR ± 3 °</td></tr> </table>		mm	INCH	4 PLACES	± ---	± ---	3 PLACES	± ---	± ---	2 PLACES	± 0.2	± ---	1 PLACE	± ---	± ---	ANGULAR ± 3 °			<table border="1"> <tr><th>DRAWN BY</th><th>DATE</th></tr> <tr><td>YLQ1A0</td><td>2005/01/24</td></tr> <tr><th>CHECKED BY</th><th>DATE</th></tr> <tr><td>PTL IM</td><td>2005/02/01</td></tr> <tr><th>APPROVED BY</th><th>DATE</th></tr> <tr><td>SCLOW</td><td>2005/02/01</td></tr> </table>	DRAWN BY	DATE	YLQ1A0	2005/01/24	CHECKED BY	DATE	PTL IM	2005/02/01	APPROVED BY	DATE	SCLOW	2005/02/01	TITLE SALES DRAWING SINGLE ROW SINGLE WAFER 2.54MM PITCH, R/A		
				mm	INCH																																	
			4 PLACES	± ---	± ---																																	
			3 PLACES	± ---	± ---																																	
2 PLACES	± 0.2	± ---																																				
1 PLACE	± ---	± ---																																				
ANGULAR ± 3 °																																						
DRAWN BY	DATE																																					
YLQ1A0	2005/01/24																																					
CHECKED BY	DATE																																					
PTL IM	2005/02/01																																					
APPROVED BY	DATE																																					
SCLOW	2005/02/01																																					
	DRAFT WHERE APPLICABLE MUST REMAIN WITHIN DIMENSIONS	SEE TABLE	MOLEX INCORPORATED																																			
			DOCUMENT NO. SD-87897-010	SHEET NO. 15 OF 15																																		
			THIS DRAWING CONTAINS INFORMATION THAT IS PROPRIETARY TO MOLEX INCORPORATED AND SHOULD NOT BE USED WITHOUT WRITTEN PERMISSION																																			

PACKAGING OPTION PART NO.										DIMENSION				
TRY WITHOUT CAP	TRY WITH CAP	TUBE WITHOUT CAP	TUBE WITH CAP	TAPE & REEL WITHOUT CAP	TAPE & REEL WITH CAP	CKT SIZE	VOID POSITION	PLATING TYPE	A	B	C	D	E	
F	87897-0101	-----	87897-0121	-----	-----	1	----	1	2.54	--	5.84	2.29	1.52	
	87897-0102	-----	87897-0122	-----	-----	1	----	2	2.54	--	5.84	2.29	1.52	
	87897-0103	-----	87897-0123	-----	-----	1	----	3	2.54	--	5.84	2.29	1.52	
	87897-0104	-----	87897-0124	-----	-----	1	----	4	2.54	--	5.84	2.29	1.52	
	87897-0105	-----	87897-0125	-----	-----	1	----	5	2.54	--	5.84	2.29	1.52	
	87897-0106	-----	87897-0126	-----	-----	1	----	6	2.54	--	5.84	2.29	1.52	
E														
	87897-0201	-----	87897-0221	-----	-----	2	----	1	5.08	2.54	5.84	2.29	1.52	
	87897-0202	-----	87897-0222	-----	-----	2	----	2	5.08	2.54	5.84	2.29	1.52	
	87897-0203	-----	87897-0223	-----	-----	2	----	3	5.08	2.54	5.84	2.29	1.52	
	87897-0204	-----	87897-0224	-----	-----	2	----	4	5.08	2.54	5.84	2.29	1.52	
D	87897-0205	-----	87897-0225	-----	-----	2	----	5	5.08	2.54	5.84	2.29	1.52	
	87897-0206	-----	87897-0226	-----	-----	2	----	6	5.08	2.54	5.84	2.29	1.52	
	87897-0301	-----	87897-0321	-----	-----	3	----	1	7.62	5.08	5.84	2.29	1.52	
	87897-0302	-----	87897-0322	-----	-----	3	----	2	7.62	5.08	5.84	2.29	1.52	
C	87897-0303	-----	87897-0323	-----	-----	3	----	3	7.62	5.08	5.84	2.29	1.52	
	87897-0304	-----	87897-0324	-----	-----	3	----	4	7.62	5.08	5.84	2.29	1.52	
	87897-0305	-----	87897-0325	-----	-----	3	----	5	7.62	5.08	5.84	2.29	1.52	
	87897-0306	-----	87897-0326	-----	-----	3	----	6	7.62	5.08	5.84	2.29	1.52	
B														

EWB#1086 EC NO: S2007-0876 DRWN: CWLAM 2007/04/09 CHKD: KWLEE 2007/04/13 APPR: KWLEE 2007/04/14	QUALITY SYMBOLS ▽=0 ▽=0	GENERAL TOLERANCES (UNLESS SPECIFIED)		DIMENSION STYLE MM ONLY		SCALE NTS	DESIGN UNITS METRIC	THIRD ANGLE PROJECTION		
		4 PLACES ± --- ± --- 3 PLACES ± --- ± --- 2 PLACES ± 0.2 ± --- 1 PLACE ± --- ± ---		mm INCH		DRAWN BY YLQ1A0	DATE 2005/01/24	TITLE SALES DRAWING SINGLE ROW SINGLE WAFER 2.54MM PITCH, R/A		
		ANGULAR ± 3 °		APPROVED BY SCLOW	DATE 2005/02/01	MOLEX INCORPORATED			DOCUMENT NO. SD-87897-010	SHEET NO. 2 OF 15
		DRAFT WHERE APPLICABLE MUST REMAIN WITHIN DIMENSIONS		SEE TABLE			THIS DRAWING CONTAINS INFORMATION THAT IS PROPRIETARY TO MOLEX INCORPORATED AND SHOULD NOT BE USED WITHOUT WRITTEN PERMISSION			

PACKAGING OPTION PART NO.						CKT SIZE	VOID POSITION	PLATING TYPE	DIMENSION				
TRY WITHOUT CAP	TRY WITH CAP	TUBE WITHOUT CAP	TUBE WITH CAP	TAPE & REEL WITHOUT CAP	TAPE & REEL WITH CAP				A	B	C	D	E
F	87897-0401	-----	87897-0421	-----	-----	4	----	1	10.16	7.62	5.84	2.29	1.52
	87897-0402	-----	87897-0422	-----	-----	4	----	2	10.16	7.62	5.84	2.29	1.52
	87897-0403	-----	87897-0423	-----	-----	4	----	3	10.16	7.62	5.84	2.29	1.52
	87897-0404	-----	87897-0424	-----	-----	4	----	4	10.16	7.62	5.84	2.29	1.52
	87897-0405	-----	87897-0425	-----	-----	4	----	5	10.16	7.62	5.84	2.29	1.52
	87897-0406	-----	87897-0426	-----	-----	4	----	6	10.16	7.62	5.84	2.29	1.52
E													
	87897-0501	-----	87897-0521	-----	-----	5	----	1	12.70	10.16	5.84	2.29	1.52
	87897-0502	-----	87897-0522	-----	-----	5	----	2	12.70	10.16	5.84	2.29	1.52
	87897-0503	-----	87897-0523	-----	-----	5	----	3	12.70	10.16	5.84	2.29	1.52
	87897-0504	-----	87897-0524	-----	-----	5	----	4	12.70	10.16	5.84	2.29	1.52
D	87897-0505	-----	87897-0525	-----	-----	5	----	5	12.70	10.16	5.84	2.29	1.52
	87897-0506	-----	87897-0526	-----	-----	5	----	6	12.70	10.16	5.84	2.29	1.52
	87897-0601	-----	87897-0621	-----	-----	6	----	1	15.24	12.70	5.84	2.29	1.52
	87897-0602	-----	87897-0622	-----	-----	6	----	2	15.24	12.70	5.84	2.29	1.52
C	87897-0603	-----	87897-0623	-----	-----	6	----	3	15.24	12.70	5.84	2.29	1.52
	87897-0604	-----	87897-0624	-----	-----	6	----	4	15.24	12.70	5.84	2.29	1.52
	87897-0605	-----	87897-0625	-----	-----	6	----	5	15.24	12.70	5.84	2.29	1.52
	87897-0606	-----	87897-0626	-----	-----	6	----	6	15.24	12.70	5.84	2.29	1.52
B													

EWB#1086 EC NO: S2007-0876 DRWN: CWLAM 2007/04/09 CHKD: KWLEE 2007/04/13 APPR: KWLEE 2007/04/14	QUALITY SYMBOLS ▽=0 ▽=0	GENERAL TOLERANCES (UNLESS SPECIFIED)		DIMENSION STYLE MM ONLY		SCALE NTS	DESIGN UNITS METRIC	THIRD ANGLE PROJECTION		
		4 PLACES ± --- ± --- 3 PLACES ± --- ± --- 2 PLACES ± 0.2 ± --- 1 PLACE ± --- ± ---		mm INCH		DRAWN BY YLQ1A0	DATE 2005/01/24	TITLE SALES DRAWING SINGLE ROW SINGLE WAFER 2.54MM PITCH, R/A		
		ANGULAR ± 3 °		APPROVED BY SCLOW	DATE 2005/02/01	MOLEX INCORPORATED			SHEET NO. 3 OF 15	
		DRAFT WHERE APPLICABLE MUST REMAIN WITHIN DIMENSIONS		SEE TABLE		DOCUMENT NO. SD-87897-010			MATERIAL NO.	

PACKAGING OPTION PART NO.						CKT SIZE	VOID POSITION	PLATING TYPE	DIMENSION				
TRY WITHOUT CAP	TRY WITH CAP	TUBE WITHOUT CAP	TUBE WITH CAP	TAPE & REEL WITHOUT CAP	TAPE & REEL WITH CAP				A	B	C	D	E
F	87897-0701	-----	87897-0721	-----	-----	7	----	1	17.78	15.24	5.84	2.29	1.52
	87897-0702	-----	87897-0722	-----	-----	7	----	2	17.78	15.24	5.84	2.29	1.52
	87897-0703	-----	87897-0723	-----	-----	7	----	3	17.78	15.24	5.84	2.29	1.52
	87897-0704	-----	87897-0724	-----	-----	7	----	4	17.78	15.24	5.84	2.29	1.52
	87897-0705	-----	87897-0725	-----	-----	7	----	5	17.78	15.24	5.84	2.29	1.52
	87897-0706	-----	87897-0726	-----	-----	7	----	6	17.78	15.24	5.84	2.29	1.52
E													
	87897-0801	-----	87897-0821	-----	-----	8	----	1	20.32	17.78	5.84	2.29	1.52
	87897-0802	-----	87897-0822	-----	-----	8	----	2	20.32	17.78	5.84	2.29	1.52
	87897-0803	-----	87897-0823	-----	-----	8	----	3	20.32	17.78	5.84	2.29	1.52
	87897-0804	-----	87897-0824	-----	-----	8	----	4	20.32	17.78	5.84	2.29	1.52
D	87897-0805	-----	87897-0825	-----	-----	8	----	5	20.32	17.78	5.84	2.29	1.52
	87897-0806	-----	87897-0826	-----	-----	8	----	6	20.32	17.78	5.84	2.29	1.52
	87897-0901	-----	87897-0921	-----	-----	9	----	1	22.86	20.32	5.84	2.29	1.52
	87897-0902	-----	87897-0922	-----	-----	9	----	2	22.86	20.32	5.84	2.29	1.52
C	87897-0903	-----	87897-0923	-----	-----	9	----	3	22.86	20.32	5.84	2.29	1.52
	87897-0904	-----	87897-0924	-----	-----	9	----	4	22.86	20.32	5.84	2.29	1.52
	87897-0905	-----	87897-0925	-----	-----	9	----	5	22.86	20.32	5.84	2.29	1.52
	87897-0906	-----	87897-0926	-----	-----	9	----	6	22.86	20.32	5.84	2.29	1.52
B													

EWB#1086 EC NO: S2007-0876 DRWN: CWLAM 2007/04/09 CHKD: KWLEE 2007/04/13 APPR: KWLEE 2007/04/14	QUALITY SYMBOLS =0 =0	GENERAL TOLERANCES (UNLESS SPECIFIED)		DIMENSION STYLE MM ONLY		SCALE NTS	DESIGN UNITS METRIC	THIRD ANGLE PROJECTION																										
		<table border="1"> <tr><th></th><th>mm</th><th>INCH</th></tr> <tr><td>4 PLACES</td><td>± ---</td><td>± ---</td></tr> <tr><td>3 PLACES</td><td>± ---</td><td>± ---</td></tr> <tr><td>2 PLACES</td><td>± 0.2</td><td>± ---</td></tr> <tr><td>1 PLACE</td><td>± ---</td><td>± ---</td></tr> </table>			mm	INCH	4 PLACES	± ---	± ---	3 PLACES	± ---	± ---	2 PLACES	± 0.2	± ---	1 PLACE	± ---	± ---	<table border="1"> <tr><th>DRAWN BY</th><th>DATE</th></tr> <tr><td>YLQ1A0</td><td>2005/01/24</td></tr> <tr><th>CHECKED BY</th><th>DATE</th></tr> <tr><td>PTL IM</td><td>2005/02/01</td></tr> <tr><th>APPROVED BY</th><th>DATE</th></tr> <tr><td>SCLOW</td><td>2005/02/01</td></tr> </table>		DRAWN BY	DATE	YLQ1A0	2005/01/24	CHECKED BY	DATE	PTL IM	2005/02/01	APPROVED BY	DATE	SCLOW	2005/02/01	TITLE SALES DRAWING SINGLE ROW SINGLE WAFER 2.54MM PITCH, R/A	
			mm	INCH																														
		4 PLACES	± ---	± ---																														
3 PLACES	± ---	± ---																																
2 PLACES	± 0.2	± ---																																
1 PLACE	± ---	± ---																																
DRAWN BY	DATE																																	
YLQ1A0	2005/01/24																																	
CHECKED BY	DATE																																	
PTL IM	2005/02/01																																	
APPROVED BY	DATE																																	
SCLOW	2005/02/01																																	
DRAFT WHERE APPLICABLE MUST REMAIN WITHIN DIMENSIONS		SEE TABLE		MOLEX INCORPORATED		DOCUMENT NO. SD-87897-010	SHEET NO. 4 OF 15																											

PACKAGING OPTION PART NO.						CKT SIZE	VOID POSITION	PLATING TYPE	DIMENSION				
TRY WITHOUT CAP	TRY WITH CAP	TUBE WITHOUT CAP	TUBE WITH CAP	TAPE & REEL WITHOUT CAP	TAPE & REEL WITH CAP				A	B	C	D	E
F	87897-1001	-----	87897-1021	-----	-----	10	----	1	25.40	22.86	5.84	2.29	1.52
	87897-1002	-----	87897-1022	-----	-----	10	----	2	25.40	22.86	5.84	2.29	1.52
	87897-1003	-----	87897-1023	-----	-----	10	----	3	25.40	22.86	5.84	2.29	1.52
	87897-1004	-----	87897-1024	-----	-----	10	----	4	25.40	22.86	5.84	2.29	1.52
	87897-1005	-----	87897-1025	-----	-----	10	----	5	25.40	22.86	5.84	2.29	1.52
	87897-1006	-----	87897-1026	-----	-----	10	----	6	25.40	22.86	5.84	2.29	1.52
E													
	87897-1101	-----	87897-1121	-----	-----	11	----	1	27.94	25.40	5.84	2.29	1.52
	87897-1102	-----	87897-1122	-----	-----	11	----	2	27.94	25.40	5.84	2.29	1.52
	87897-1103	-----	87897-1123	-----	-----	11	----	3	27.94	25.40	5.84	2.29	1.52
	87897-1104	-----	87897-1124	-----	-----	11	----	4	27.94	25.40	5.84	2.29	1.52
D	87897-1105	-----	87897-1125	-----	-----	11	----	5	27.94	25.40	5.84	2.29	1.52
	87897-1106	-----	87897-1126	-----	-----	11	----	6	27.94	25.40	5.84	2.29	1.52
	87897-1201	-----	87897-1221	-----	-----	12	----	1	30.48	27.94	5.84	2.29	1.52
	87897-1202	-----	87897-1222	-----	-----	12	----	2	30.48	27.94	5.84	2.29	1.52
C	87897-1203	-----	87897-1223	-----	-----	12	----	3	30.48	27.94	5.84	2.29	1.52
	87897-1204	-----	87897-1224	-----	-----	12	----	4	30.48	27.94	5.84	2.29	1.52
	87897-1205	-----	87897-1225	-----	-----	12	----	5	30.48	27.94	5.84	2.29	1.52
	87897-1206	-----	87897-1226	-----	-----	12	----	6	30.48	27.94	5.84	2.29	1.52
B													

QUALITY SYMBOLS =0 =0	GENERAL TOLERANCES (UNLESS SPECIFIED) <table border="1"> <tr><th colspan="2">mm</th><th>INCH</th></tr> <tr><td>4 PLACES</td><td>± ---</td><td>± ---</td></tr> <tr><td>3 PLACES</td><td>± ---</td><td>± ---</td></tr> <tr><td>2 PLACES</td><td>± 0.2</td><td>± ---</td></tr> <tr><td>1 PLACE</td><td>± ---</td><td>± ---</td></tr> </table>	mm		INCH	4 PLACES	± ---	± ---	3 PLACES	± ---	± ---	2 PLACES	± 0.2	± ---	1 PLACE	± ---	± ---	DIMENSION STYLE MM ONLY DRAWN BY: YLQ1A0 DATE: 2005/01/24 CHECKED BY: DATE: PTL IM 2005/02/01 APPROVED BY: DATE: SCLOW 2005/02/01	SCALE NTS DESIGN UNITS METRIC THIRD ANGLE PROJECTION	TITLE SALES DRAWING SINGLE ROW SINGLE WAFER 2.54MM PITCH, R/A MOLEX INCORPORATED
		mm		INCH															
		4 PLACES	± ---	± ---															
		3 PLACES	± ---	± ---															
2 PLACES	± 0.2	± ---																	
1 PLACE	± ---	± ---																	
DESCRIPTION EWR#1086 EC NO: S2007-0876 DRWN: CWLAM 2007/04/09 CHKD: KWLEE 2007/04/13 APPR: KWLEE 2007/04/14	DRAFT WHERE APPLICABLE MUST REMAIN WITHIN DIMENSIONS	SEE TABLE MATERIAL NO. DOCUMENT NO.	SHEET NO. 5 OF 15																
				SIZE A3	THIS DRAWING CONTAINS INFORMATION THAT IS PROPRIETARY TO MOLEX INCORPORATED AND SHOULD NOT BE USED WITHOUT WRITTEN PERMISSION														
						SD-87897-010													

PACKAGING OPTION PART NO.										DIMENSION				
TRY WITHOUT CAP	TRY WITH CAP	TUBE WITHOUT CAP	TUBE WITH CAP	TAPE & REEL WITHOUT CAP	TAPE & REEL WITH CAP	CKT SIZE	VOID POSITION	PLATING TYPE	A	B	C	D	E	
F	87897-1301	-----	87897-1321	-----	-----	13	----	1	33.02	30.48	5.84	2.29	1.52	
	87897-1302	-----	87897-1322	-----	-----	13	----	2	33.02	30.48	5.84	2.29	1.52	
	87897-1303	-----	87897-1323	-----	-----	13	----	3	33.02	30.48	5.84	2.29	1.52	
	87897-1304	-----	87897-1324	-----	-----	13	----	4	33.02	30.48	5.84	2.29	1.52	
	87897-1305	-----	87897-1325	-----	-----	13	----	5	33.02	30.48	5.84	2.29	1.52	
	87897-1306	-----	87897-1326	-----	-----	13	----	6	33.02	30.48	5.84	2.29	1.52	
E														
	87897-1401	-----	87897-1421	-----	-----	14	----	1	35.56	33.02	5.84	2.29	1.52	
	87897-1402	-----	87897-1422	-----	-----	14	----	2	35.56	33.02	5.84	2.29	1.52	
	87897-1403	-----	87897-1423	-----	-----	14	----	3	35.56	33.02	5.84	2.29	1.52	
	87897-1404	-----	87897-1424	-----	-----	14	----	4	35.56	33.02	5.84	2.29	1.52	
D	87897-1405	-----	87897-1425	-----	-----	14	----	5	35.56	33.02	5.84	2.29	1.52	
	87897-1406	-----	87897-1426	-----	-----	14	----	6	35.56	33.02	5.84	2.29	1.52	
	87897-1501	-----	87897-1521	-----	-----	15	----	1	38.10	35.56	5.84	2.29	1.52	
	87897-1502	-----	87897-1522	-----	-----	15	----	2	38.10	35.56	5.84	2.29	1.52	
C	87897-1503	-----	87897-1523	-----	-----	15	----	3	38.10	35.56	5.84	2.29	1.52	
	87897-1504	-----	87897-1524	-----	-----	15	----	4	38.10	35.56	5.84	2.29	1.52	
	87897-1505	-----	87897-1525	-----	-----	15	----	5	38.10	35.56	5.84	2.29	1.52	
	87897-1506	-----	87897-1526	-----	-----	15	----	6	38.10	35.56	5.84	2.29	1.52	
B														

QUALITY SYMBOLS =0 =0	GENERAL TOLERANCES (UNLESS SPECIFIED) <table border="1"> <tr><th></th><th>mm</th><th>INCH</th></tr> <tr><td>4 PLACES</td><td>± ---</td><td>± ---</td></tr> <tr><td>3 PLACES</td><td>± ---</td><td>± ---</td></tr> <tr><td>2 PLACES</td><td>± 0.2</td><td>± ---</td></tr> <tr><td>1 PLACE</td><td>± ---</td><td>± ---</td></tr> </table>		mm	INCH	4 PLACES	± ---	± ---	3 PLACES	± ---	± ---	2 PLACES	± 0.2	± ---	1 PLACE	± ---	± ---	DIMENSION STYLE MM ONLY	SCALE NTS	DESIGN UNITS METRIC	THIRD ANGLE PROJECTION
		mm	INCH																	
	4 PLACES	± ---	± ---																	
	3 PLACES	± ---	± ---																	
2 PLACES	± 0.2	± ---																		
1 PLACE	± ---	± ---																		
DESCRIPTION EWR#1086 EC NO: S2007-0876 DRWN: CWLAM 2007/04/09 CHKD: KWLEE 2007/04/13 APPR: KWLEE 2007/04/14	REVISIONS A1	DRAFT WHERE APPLICABLE MUST REMAIN WITHIN DIMENSIONS	DRAWN BY YLQ1A0 DATE 2005/01/24 CHECKED BY PTL IM DATE 2005/02/01 APPROVED BY SCLOW DATE 2005/02/01	TITLE SALES DRAWING SINGLE ROW SINGLE WAFER 2.54MM PITCH, R/A	MOLEX INCORPORATED															
		MATERIAL NO. SEE TABLE	DOCUMENT NO. SD-87897-010	SHEET NO. 6 OF 15																
		SIZE A3	THIS DRAWING CONTAINS INFORMATION THAT IS PROPRIETARY TO MOLEX INCORPORATED AND SHOULD NOT BE USED WITHOUT WRITTEN PERMISSION																	


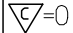
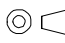

PACKAGING OPTION PART NO.										CKT SIZE	VOID POSITION	PLATING TYPE	DIMENSION				
TRY WITHOUT CAP	TRY WITH CAP	TUBE WITHOUT CAP	TUBE WITH CAP	TAPE & REEL WITHOUT CAP	TAPE & REEL WITH CAP	A	B	C	D				E				
F	87897-1601	-----	87897-1621	-----	-----	-----	16	----	1	40.64	38.10	5.84	2.29	1.52			
	87897-1602	-----	87897-1622	-----	-----	-----	16	----	2	40.64	38.10	5.84	2.29	1.52			
	87897-1603	-----	87897-1623	-----	-----	-----	16	----	3	40.64	38.10	5.84	2.29	1.52			
	87897-1604	-----	87897-1624	-----	-----	-----	16	----	4	40.64	38.10	5.84	2.29	1.52			
	87897-1605	-----	87897-1625	-----	-----	-----	16	----	5	40.64	38.10	5.84	2.29	1.52			
	87897-1606	-----	87897-1626	-----	-----	-----	16	----	6	40.64	38.10	5.84	2.29	1.52			
E																	
	87897-1701	-----	87897-1721	-----	-----	-----	17	----	1	43.18	40.64	5.84	2.29	1.52			
	87897-1702	-----	87897-1722	-----	-----	-----	17	----	2	43.18	40.64	5.84	2.29	1.52			
	87897-1703	-----	87897-1723	-----	-----	-----	17	----	3	43.18	40.64	5.84	2.29	1.52			
	87897-1704	-----	87897-1724	-----	-----	-----	17	----	4	43.18	40.64	5.84	2.29	1.52			
D	87897-1705	-----	87897-1725	-----	-----	-----	17	----	5	43.18	40.64	5.84	2.29	1.52			
	87897-1706	-----	87897-1726	-----	-----	-----	17	----	6	43.18	40.64	5.84	2.29	1.52			
	87897-1801	-----	87897-1821	-----	-----	-----	18	----	1	45.72	43.18	5.84	2.29	1.52			
	87897-1802	-----	87897-1822	-----	-----	-----	18	----	2	45.72	43.18	5.84	2.29	1.52			
C	87897-1803	-----	87897-1823	-----	-----	-----	18	----	3	45.72	43.18	5.84	2.29	1.52			
	87897-1804	-----	87897-1824	-----	-----	-----	18	----	4	45.72	43.18	5.84	2.29	1.52			
	87897-1805	-----	87897-1825	-----	-----	-----	18	----	5	45.72	43.18	5.84	2.29	1.52			
	87897-1806	-----	87897-1826	-----	-----	-----	18	----	6	45.72	43.18	5.84	2.29	1.52			
B																	

A	EWR#1086 EC NO: S2007-0876 DRWN: CWLAM 2007/04/09 CHKD: KWLEE 2007/04/13 APPR: KWLEE 2007/04/14	QUALITY SYMBOLS ▽=0 ▽=0	GENERAL TOLERANCES (UNLESS SPECIFIED) <table border="1"> <tr><th colspan="2">mm</th><th colspan="2">INCH</th></tr> <tr><td>4 PLACES</td><td>± ---</td><td>± ---</td><td>± ---</td></tr> <tr><td>3 PLACES</td><td>± ---</td><td>± ---</td><td>± ---</td></tr> <tr><td>2 PLACES</td><td>± 0.2</td><td>± ---</td><td>± ---</td></tr> <tr><td>1 PLACE</td><td>± ---</td><td>± ---</td><td>± ---</td></tr> </table>	mm		INCH		4 PLACES	± ---	± ---	± ---	3 PLACES	± ---	± ---	± ---	2 PLACES	± 0.2	± ---	± ---	1 PLACE	± ---	± ---	± ---	DIMENSION STYLE MM ONLY DRAWN BY YLQ1A0 DATE 2005/01/24 CHECKED BY PTL IM DATE 2005/02/01 APPROVED BY SCLOW DATE 2005/02/01	SCALE NTS DESIGN UNITS METRIC THIRD ANGLE PROJECTION	TITLE SALES DRAWING SINGLE ROW SINGLE WAFER 2.54MM PITCH, R/A	MATERIAL NO. MOLEX INCORPORATED	DOCUMENT NO. SD-87897-010	SHEET NO. 7 OF 15
				mm		INCH																							
				4 PLACES	± ---	± ---	± ---																						
				3 PLACES	± ---	± ---	± ---																						
2 PLACES	± 0.2	± ---	± ---																										
1 PLACE	± ---	± ---	± ---																										
DRAFT WHERE APPLICABLE MUST REMAIN WITHIN DIMENSIONS	SEE TABLE	THIS DRAWING CONTAINS INFORMATION THAT IS PROPRIETARY TO MOLEX INCORPORATED AND SHOULD NOT BE USED WITHOUT WRITTEN PERMISSION																											
			SIZE A3																										

PACKAGING OPTION PART NO.						CKT SIZE	VOID POSITION	PLATING TYPE	DIMENSION				
TRY WITHOUT CAP	TRY WITH CAP	TUBE WITHOUT CAP	TUBE WITH CAP	TAPE & REEL WITHOUT CAP	TAPE & REEL WITH CAP				A	B	C	D	E
F	87897-1901	-----	87897-1921	-----	-----	19	----	1	48.26	45.72	5.84	2.29	1.52
	87897-1902	-----	87897-1922	-----	-----	19	----	2	48.26	45.72	5.84	2.29	1.52
	87897-1903	-----	87897-1923	-----	-----	19	----	3	48.26	45.72	5.84	2.29	1.52
	87897-1904	-----	87897-1924	-----	-----	19	----	4	48.26	45.72	5.84	2.29	1.52
	87897-1905	-----	87897-1925	-----	-----	19	----	5	48.26	45.72	5.84	2.29	1.52
	87897-1906	-----	87897-1926	-----	-----	19	----	6	48.26	45.72	5.84	2.29	1.52
E													
	87897-2001	-----	87897-2021	-----	-----	20	----	1	50.80	48.26	5.84	2.29	1.52
	87897-2002	-----	87897-2022	-----	-----	20	----	2	50.80	48.26	5.84	2.29	1.52
	87897-2003	-----	87897-2023	-----	-----	20	----	3	50.80	48.26	5.84	2.29	1.52
	87897-2004	-----	87897-2024	-----	-----	20	----	4	50.80	48.26	5.84	2.29	1.52
D	87897-2005	-----	87897-2025	-----	-----	20	----	5	50.80	48.26	5.84	2.29	1.52
	87897-2006	-----	87897-2026	-----	-----	20	----	6	50.80	48.26	5.84	2.29	1.52
	87897-2101	-----	87897-2121	-----	-----	21	----	1	53.34	50.80	5.84	2.29	1.52
	87897-2102	-----	87897-2122	-----	-----	21	----	2	53.34	50.80	5.84	2.29	1.52
C	87897-2103	-----	87897-2123	-----	-----	21	----	3	53.34	50.80	5.84	2.29	1.52
	87897-2104	-----	87897-2124	-----	-----	21	----	4	53.34	50.80	5.84	2.29	1.52
	87897-2105	-----	87897-2125	-----	-----	21	----	5	53.34	50.80	5.84	2.29	1.52
	87897-2106	-----	87897-2126	-----	-----	21	----	6	53.34	50.80	5.84	2.29	1.52
B													

A	EWR#1086 EC NO: S2007-0876 DRWN: CWLAM 2007/04/09 CHKD: KWLEE 2007/04/13 APPR: KWLEE 2007/04/14	QUALITY SYMBOLS ▽=0 ▽=0	DESCRIPTION REV	GENERAL TOLERANCES (UNLESS SPECIFIED)		DIMENSION STYLE MM ONLY		SCALE NTS	DESIGN UNITS METRIC	THIRD ANGLE PROJECTION			
						DRAWN BY YLQ1A0		DATE 2005/01/24		TITLE SALES DRAWING SINGLE ROW SINGLE WAFER 2.54MM PITCH, R/A			
				4 PLACES ± --- ± ---		CHECKED BY PTL IM		DATE 2005/02/01		APPROVED BY SCLOW			
				3 PLACES ± --- ± ---		DATE 2005/02/01		DATE 2005/02/01		MATERIAL NO.		DOCUMENT NO.	
2 PLACES ± 0.2 ± ---		ANGULAR ± 3 °		SEE TABLE		SD-87897-010		8 OF 15					
1 PLACE ± --- ± ---		DRAFT WHERE APPLICABLE MUST REMAIN WITHIN DIMENSIONS		SIZE A3		THIS DRAWING CONTAINS INFORMATION THAT IS PROPRIETARY TO MOLEX INCORPORATED AND SHOULD NOT BE USED WITHOUT WRITTEN PERMISSION							

PACKAGING OPTION PART NO.										DIMENSION				
TRY WITHOUT CAP	TRY WITH CAP	TUBE WITHOUT CAP	TUBE WITH CAP	TAPE & REEL WITHOUT CAP	TAPE & REEL WITH CAP	CKT SIZE	VOID POSITION	PLATING TYPE	A	B	C	D	E	
F	87897-2201	-----	87897-2221	-----	-----	22	----	1	55.88	53.34	5.84	2.29	1.52	
	87897-2202	-----	87897-2222	-----	-----	22	----	2	55.88	53.34	5.84	2.29	1.52	
	87897-2203	-----	87897-2223	-----	-----	22	----	3	55.88	53.34	5.84	2.29	1.52	
	87897-2204	-----	87897-2224	-----	-----	22	----	4	55.88	53.34	5.84	2.29	1.52	
	87897-2205	-----	87897-2225	-----	-----	22	----	5	55.88	53.34	5.84	2.29	1.52	
	87897-2206	-----	87897-2226	-----	-----	22	----	6	55.88	53.34	5.84	2.29	1.52	
E														
	87897-2301	-----	87897-2321	-----	-----	23	----	1	58.42	55.88	5.84	2.29	1.52	
	87897-2302	-----	87897-2322	-----	-----	23	----	2	58.42	55.88	5.84	2.29	1.52	
	87897-2303	-----	87897-2323	-----	-----	23	----	3	58.42	55.88	5.84	2.29	1.52	
	87897-2304	-----	87897-2324	-----	-----	23	----	4	58.42	55.88	5.84	2.29	1.52	
D	87897-2305	-----	87897-2325	-----	-----	23	----	5	58.42	55.88	5.84	2.29	1.52	
	87897-2306	-----	87897-2326	-----	-----	23	----	6	58.42	55.88	5.84	2.29	1.52	
	87897-2401	-----	87897-2421	-----	-----	24	----	1	60.96	58.42	5.84	2.29	1.52	
	87897-2402	-----	87897-2422	-----	-----	24	----	2	60.96	58.42	5.84	2.29	1.52	
C	87897-2403	-----	87897-2423	-----	-----	24	----	3	60.96	58.42	5.84	2.29	1.52	
	87897-2404	-----	87897-2424	-----	-----	24	----	4	60.96	58.42	5.84	2.29	1.52	
	87897-2405	-----	87897-2425	-----	-----	24	----	5	60.96	58.42	5.84	2.29	1.52	
	87897-2406	-----	87897-2426	-----	-----	24	----	6	60.96	58.42	5.84	2.29	1.52	
B														

QUALITY SYMBOLS  =0  =0	GENERAL TOLERANCES (UNLESS SPECIFIED) <table border="1"> <tr><th></th><th>mm</th><th>INCH</th></tr> <tr><td>4 PLACES</td><td>± ---</td><td>± ---</td></tr> <tr><td>3 PLACES</td><td>± ---</td><td>± ---</td></tr> <tr><td>2 PLACES</td><td>± 0.2</td><td>± ---</td></tr> <tr><td>1 PLACE</td><td>± ---</td><td>± ---</td></tr> </table>		mm	INCH	4 PLACES	± ---	± ---	3 PLACES	± ---	± ---	2 PLACES	± 0.2	± ---	1 PLACE	± ---	± ---	DIMENSION STYLE MM ONLY	SCALE NTS	DESIGN UNITS METRIC	 THIRD ANGLE PROJECTION
		mm	INCH																	
	4 PLACES	± ---	± ---																	
	3 PLACES	± ---	± ---																	
2 PLACES	± 0.2	± ---																		
1 PLACE	± ---	± ---																		
DESCRIPTION EWR#1086 EC NO: S2007-0876 DRWN: CWLAM 2007/04/09 CHKD: KWLEE 2007/04/13 APPR: KWLEE 2007/04/14	DESCRIPTION 4 PLACES ± --- ± --- 3 PLACES ± --- ± --- 2 PLACES ± 0.2 ± --- 1 PLACE ± --- ± --- ANGULAR ± 3 °	DRAWN BY YLQ1A0 DATE 2005/01/24 CHECKED BY DATE PTL IM 2005/02/01 APPROVED BY SCLOW DATE 2005/02/01	TITLE SALES DRAWING SINGLE ROW SINGLE WAFER 2.54MM PITCH, R/A																	
REV A1	DRAFT WHERE APPLICABLE MUST REMAIN WITHIN DIMENSIONS	MATERIAL NO. SEE TABLE	 MOLEX INCORPORATED DOCUMENT NO. SD-87897-010	SHEET NO. 9 OF 15																
THIS DRAWING CONTAINS INFORMATION THAT IS PROPRIETARY TO MOLEX INCORPORATED AND SHOULD NOT BE USED WITHOUT WRITTEN PERMISSION																				