

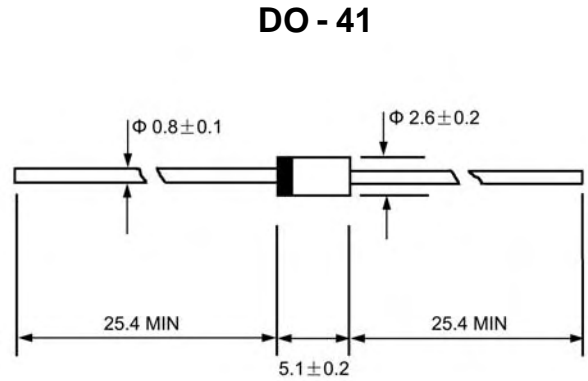


## Features

- ◇ Low cost
- ◇ Diffused junction
- ◇ Low leakage
- ◇ Low forward voltage drop
- ◇ High current capability
- ◇ Easily cleaned with alcohol, Isopropanol and similar solvents
- ◇ The plastic material carries U/L recognition 94V-0

## Mechanical Data

- ◇ Case: JEDEC DO-41, molded plastic
- ◇ Polarity: Color band denotes cathode
- ◇ Weight: 0.012 ounces, 0.34 grams
- ◇ Mounting position: Any



Dimensions in millimeters

## MAXIMUM RATINGS AND ELECTRICAL CHARACTERISTICS

Ratings at 25°C ambient temperature unless otherwise specified.

Single phase, half wave, 60 Hz, resistive or inductive load. For capacitive load, derate by 20%.

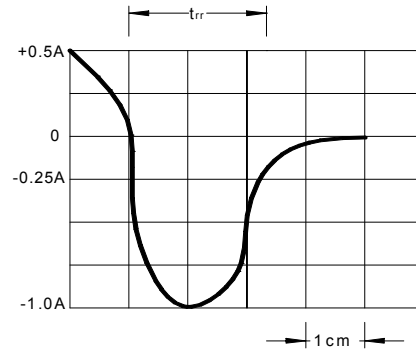
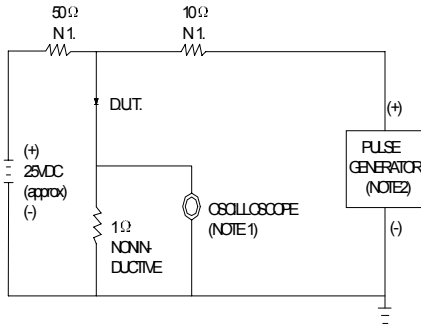
		ERC38 - 04	ERC38 - 05	ERC38 - 06	UNITS
Maximum recurrent peak reverse voltage	$V_{RRM}$	400	500	600	V
Maximum RMS voltage	$V_{RMS}$	280	350	420	V
Maximum DC blocking voltage	$V_{DC}$	400	500	600	V
Maximum average forward rectified current 9.5mm lead length, @ $T_A=75^\circ C$	$I_{F(AV)}$	1.0			A
Peak forward surge current 8.3ms single half-sine-wave superimposed on rated load @ $T_J=125^\circ C$	$I_{FSM}$	40.0			A
Maximum instantaneous forward voltage @ 1.0A	$V_F$	2.5			V
Maximum reverse current @ $T_A=25^\circ C$ at rated DC blocking voltage @ $T_A=100^\circ C$	$I_R$	5.0 50.0			$\mu A$
Maximum reverse recovery time (Note1)	$t_{rr}$	50			ns
Typical junction capacitance (Note2)	$C_J$	20	15		pF
Typical thermal resistance (Note3)	$R_{\theta JA}$	60			$^\circ C/W$
Operating junction temperature range	$T_J$	- 55 ----- + 150			$^\circ C$
Storage temperature range	$T_{STG}$	- 55 ----- + 150			$^\circ C$

NOTE: 1. Measured with  $I_F=0.5A$ ,  $I_R=1A$ ,  $t_{rr}=0.25A$ .

2. Measured at 1.0MHz and applied reverse voltage of 4.0V DC.

3. Thermal resistance from junction to ambient.

## Ratings AND Characteristic Curves

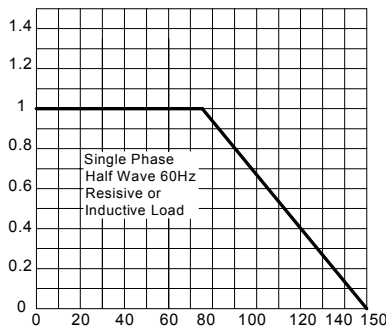
**FIG.1--TEST CIRCUIT DIAGRAM AND REVERSE RECOVERY TIME CHARACTERISTIC**


NOTES: 1. RISE TIME=7ns MAX.INPUT IMPEDANCE=1MΩ.22pF  
2. RISE TIME=10ns MAX.SOURCE IMPEDANCE=50Ω.

SET TIME BASE FOR 20/30 ns/cm

**FIG.2 --FORWARD DERATING CURVE**

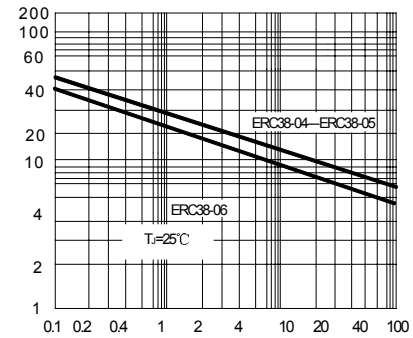
AVERAGE FORWARD RECTIFIED CURRENT.  
AMPERES



AMBIENT TEMPERATURE. °C

**FIG.3--TYPICAL JUNCTION CAPACITANCE**

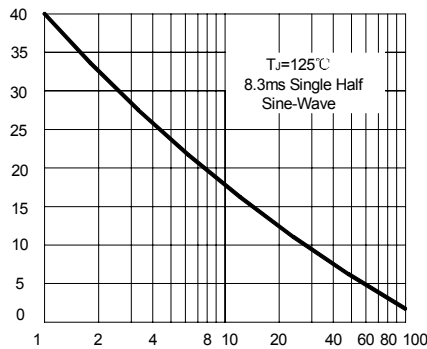
JUNCTION CAPACITANCE,pf



REVERSE VOLTAGE,VOLTS

**FIG.4--PEAK FORWARD SURGE CURRENT**

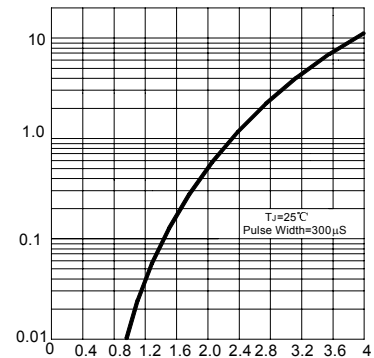
PEAK FORWARD SURGE CURRENT.  
AMPERES



NUMBER OF CYCLES AT 60 Hz

**FIG.5 -- TYPICAL FORWARD CHARACTERISTIC**

INSTANTANEOUS FORWARD CURRENT  
AMPERES



INSTANTANEOUS FORWARD VOLTAGE, VOLTS