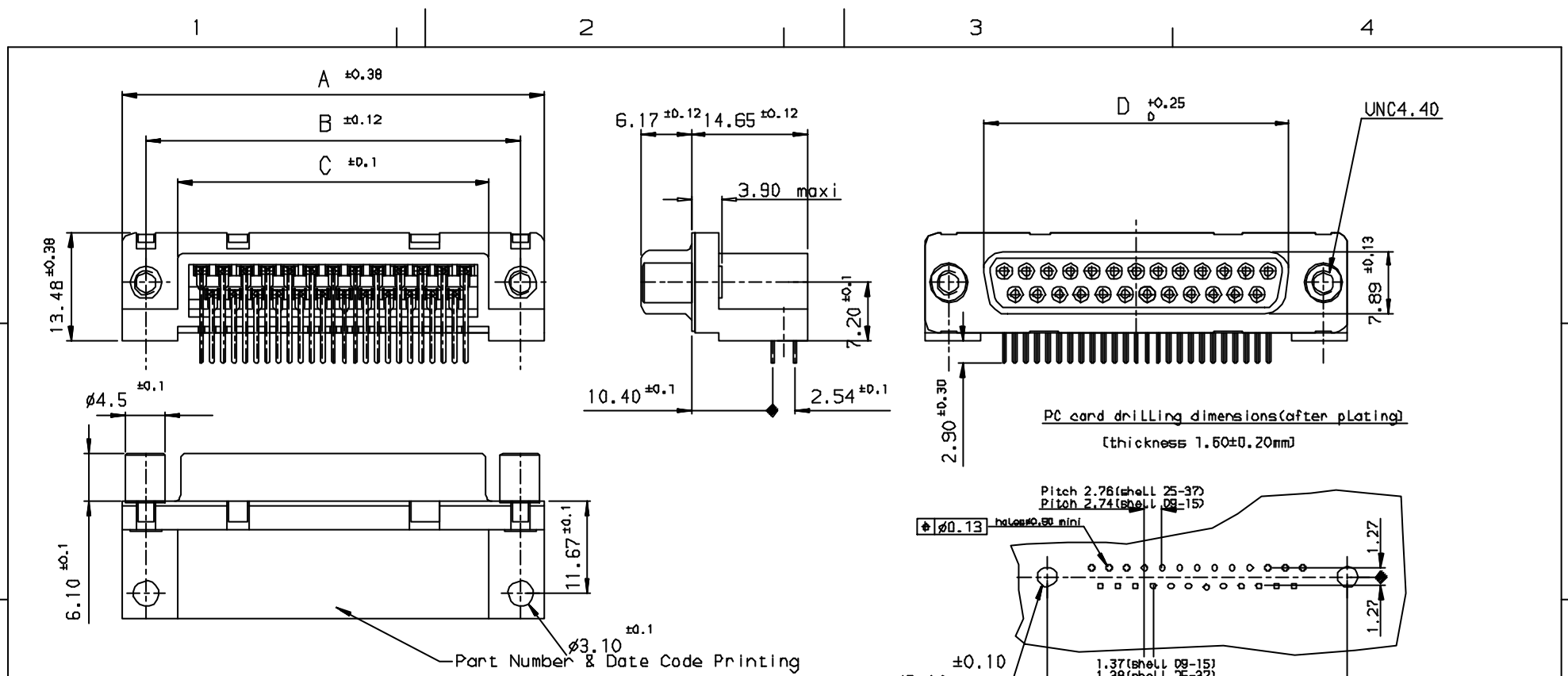


Tous droits strictement réservés. Reproduction ou communication à des tiers
Interdit de tous quelque forme que ce soit sans autorisation écrite du
Propriétaire de ce FCI. Droits de reproduction FCI.

A
FCI

ALL rights strictly reserved. Reproduction or communication to third parties in any
form whatever is not permitted without written authority from the proprietor.
Property of FCI. Copy right FCI.

D



| SHELL | A±0.38 | B±0.12 | C±0.10 | D±0.25 | E±0.07 | PART NUMBER | PART NUMBER |
|-------|--------|--------|--------|--------|--------|----------------|----------------|
| 09 | 30.81 | 24.99 | 16.96 | 16.21 | 10.96 | D09S13A4PV00** | D09S13A6PV00** |
| 15 | 39.14 | 33.32 | 25.18 | 24.54 | 19.18 | D15S13A4PV00** | D15S13A6PV00** |
| 25 | 53.03 | 47.04 | 39.12 | 38.25 | 33.12 | D25S13A4PV00** | D25S13A6PV00** |
| 37 | 69.32 | 63.50 | 55.68 | 54.71 | 49.68 | D37S13A4PV00** | D37S13A6PV00** |

Part Number & Date Code Printing
 Gold flash 0,76 μ gold
 LF FOR LEAD FREE

Technical characteristics:

Shell: steel tin plated
 Insulators: self-extinguishing thermoplastic, UL class 94V0
 Contacts size 20: phosphor bronze, gold on mating end, bright tin on termination end over nickel on entire contact
 Cycles: 500 for plating 6
 Cycles: 200 for plating 4
 Shell look: brass, tin plated

Electrical characteristics:

max. current rating: 5A
 Test voltage: 1000V
 Rated voltage: 300V
 Contact resistance: <15mΩ
 Shell resistance: <5mΩ
 Insulation resistance: >5000MΩ

Climatic characteristics:

Operating temperature range: -55° to +125°
 Dimensions
 In accordance with MIL-C-24308

| INDEX | DATE | REVISION DESCRIPTION |
|-------|---------|-------------------------|
| 1 | 21/7/05 | LEAD FREE DETAILS ADDED |
| 2 | | |

| Wr | Eon no | Dr | date |
|----|----------|----|---------|
| e | 105-0124 | JS | 27/7/05 |
| | | | |
| | | | |

FOR ROHS DETAILS REFER DWG. NO. C01-8646-0000

| | | | Tolerance | Projection | MM |
|---------------------|--------------------------------------------------------------------|----------------|------------------------------|--------------|-------|
| | | | ✓ LINEAR ±0.1 ANGULAR ±1° | | ← → |
| Dr JOHN SLEEBA | 2/8/04 | Product Family | | Size A3 | Scale |
| Eng GEORGE VJ | 2/8/04 | Spec ref | | | |
| Chr GEORGE VJ | 27/7/05 | Material | | | |
| Appr K Somasundaram | 27/7/05 | | | | |
| FCI | Title SOCKET CONNECT. SUB right angled spill WITH FEMALE SCREWLOCK | | Dwg no C01-8646-0487 | Rev. e | |
| Catalog no | | | CUSTOMER COPY | Sheet 1 of 1 | |