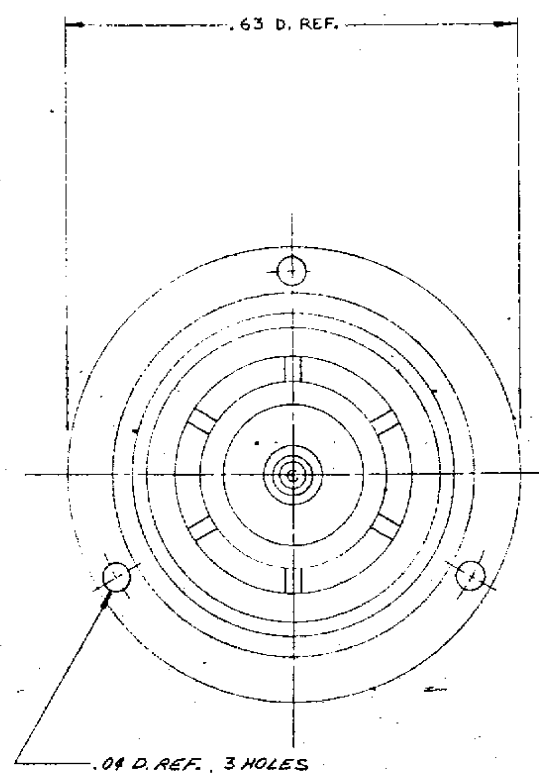
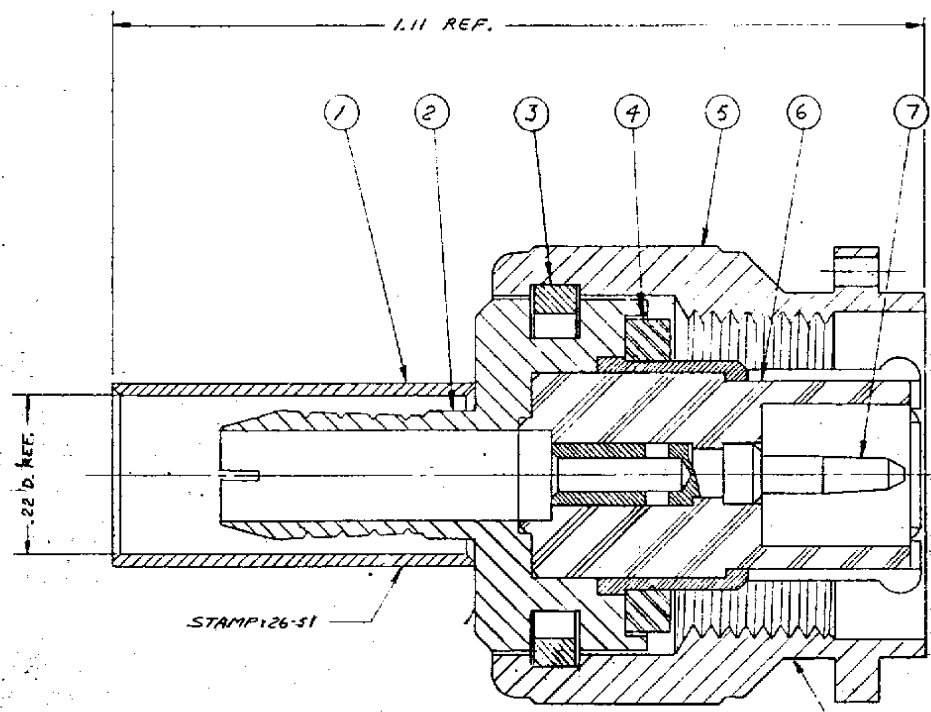


DASH NO.	DESCRIPTION	MADE FROM
----------	-------------	-----------



- NOTES:
1. FOR USE WITH RG-142, 223 & 400/U CABLE GROUPS.
 2. FOR CABLE TRIMMING USE KTT-113 & KTD-166.
 3. FOR FORMING USE CRIMP DIE SIZE 01.
 4. FOR CABLING INSTRUCTIONS SEE CP-965.

UNLESS OTHERWISE SPECIFIED:

1. TOLERANCES: FRACTIONS & 2 PLACE DECIMALS ± .010	2. REMOVE ALL BURRS, BREAK SHARP EDGES .005 MAX.
3 PLACE DECIMALS ± .004	ANGLES ± 0° 30'
T. I. R. CONCENTRICITY OF ANY 2 DIAMETERS MAY NOT EXCEED HALF THE SUM OF THEIR TOLERANCES.	3. NO FILLETS PERMITTED.
	4. SURFACE ROUGHNESS 63 MICROINCHES RMS MAX.
	5. ALL DIMENSIONS PRIOR TO PLATING.

ITEM	REQ'D	DESCRIPTION	PART NO.
8	1	CABLING INSTRUCTIONS	9-102-2M88
7	1	BNC CRIMP CAPTIVE CONTACT M	1-563-19M9D
6	1	INSULATOR	
5	1	COUPLING NUT	
4	1	GASKET	
3	1	C-RING	
2	1	K-GRIP BODY ASS'Y.	
1	1	K-GRIP SLEEVE	5-89-05-2-MC7

REVISIONS	
ISSUE	CHANGES
0	ER 13606 LI 18 JUL 74
1	CN 13841 A M. J. B 11 OCT 74
2	CN 14475 C GA 13 MAY 75
3	CN 15977 A GA 15 JUL 76
4	CN 21657 C HELEN 23 FEB 81
7	CN 32301 A LNM 19 JUN 90

M39012/26-0503	
KA-59-292	
USED ON:	
REP:	
FINISH:	
SPEC. KER 10004	
MATL:	
SPEC:	

ZNC PLUG

DRAWN W.D. DATE 2 MAY 74
APPR. LI DATE 18 JUL 74

KINGS ELECTRONICS
40 MARLBOROUGH ROAD
TUCKAHOE, N. Y. 10707

M39012/26-0503