

S-D

REVISIONS

ISSUE CHANGES

KH-59-72

S-D

USED ON:

REF:

FINISH

SPEC:

MATL

SPEC:

HN PLUG

DRAWN GA DATE 19 DEC 73

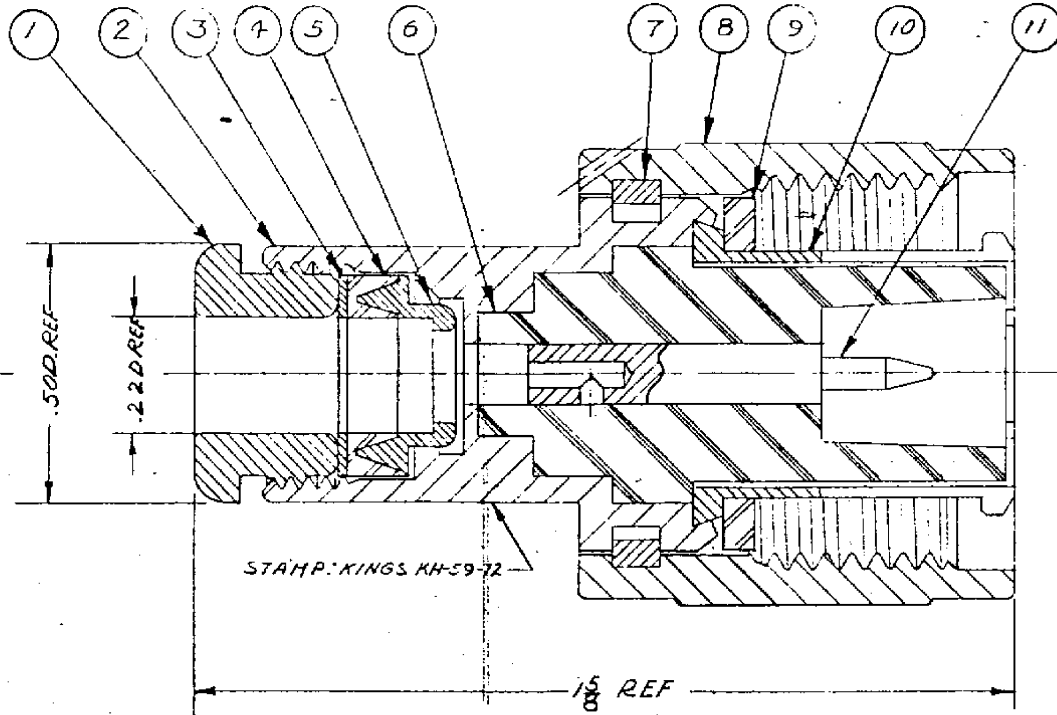
APPR. M.C. DATE 19 DEC 73

KINGS ELECTRONICS  
40 MARBLEDALE ROAD  
TUCKAHOE, N. Y. 10707

KH-59-72

S-D

DASH NO. DESCRIPTION MADE FROM



## NOTES:

1. FOR USE WITH RG-55, 5B & 223/U CABLES
2. FOR CABLING INSTRUCTIONS. SEE CP 1004

## UNLESS OTHERWISE SPECIFIED:

1. TOLERANCES: FRACTIONS & 2 PLACE DECIMALS  $\pm .010$
- 3 PLACE DECIMALS  $\pm .004$  ANGLES  $\pm 0' 30''$
2. REMOVE ALL BURRS, BREAK SHARP EDGES .005 MAX.
3. NO FILLETS PERMITTED.
4. SURFACE ROUGHNESS 63 MICROINCHES RMS MAX.
5. ALL DIMENSIONS PRIOR TO PLATING.

11	1	CONTACT	H-59-48-3-M07
10	1	CONTACT	
9	1	GASKET	
8	1	COUPLING NUT	
7	1	SPRING	
6	1	INSULATOR	
5	1	BRAID CLAMP	704-5-MC7
4	1	GASKET	704-6-M99
3	1	WASHER	89C-1-MC7
2	1	BODY	
1	1	CLAMP NUT	704-7-MC7
ITEM	REQ'D	DESCRIPTION	PART NO.