

New Jersey Semi-Conductor Products, Inc.

20 STERN AVE.
 SPRINGFIELD, NEW JERSEY 07081
 U.S.A.

TELEPHONE: (973) 376-2922
 (212) 227-6005
 FAX: (973) 376-8960

PARAMETERS

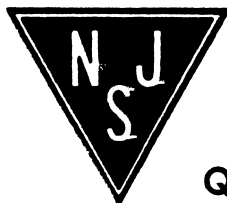
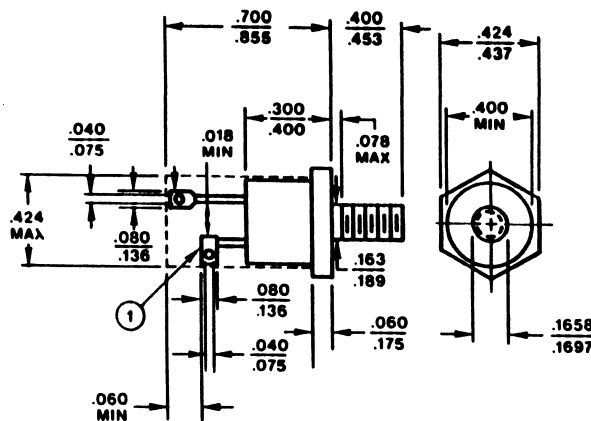
2N4171

SCR, V(DRM) = 300 V TO 399.9 V

Description: SCR, V(DRM) = 300 V to 399.9 V

Manufacturer.....	
Mil/High-Rel? (Y/N).....	
V(drm) Max.....	300
It(stat) Max. (A).....	5.0
@Temp. (test) (x°C).....	70#
Supp Curr. I(TSM).....	100,
Firing Char-Igt Max.....	60
Firing Char-Vgt Max.....	2.
Id(off) Max. (A).....	2.0m
@Temp. (test) (x°C).....	100#
I(h) Max. (A).....	60
V(T) Max.....	2.0
@It (A).....	15
Dv/Dt Worst Case.....	
t(switch) Off Typ. Time (S)...	
@It (test) (A).....	
t(switch) Off Typ. Time (S)...	
Oper. Temp (x°C) Min.....	-40
Oper. Temp (x°C) Max.....	100#
Pkg Style.....	
Surface Mounted (Y/N).....	N

Case Temperature 2 It(rms) Measured at < 25x°C
 , For less than + cycle



Quality Semi-Conductors