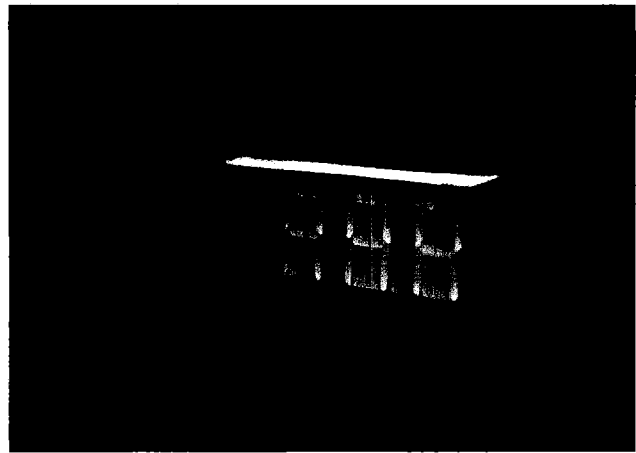
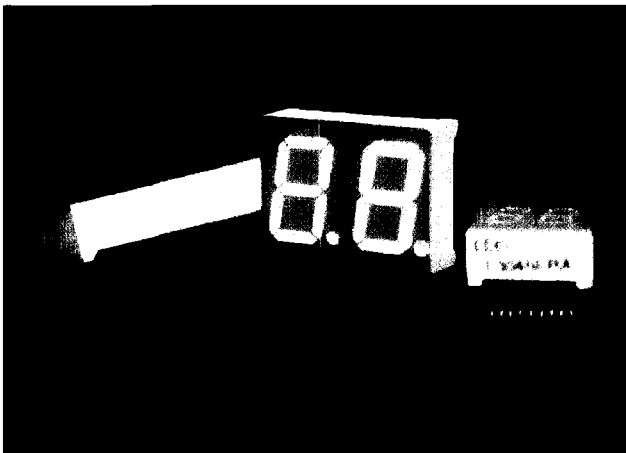
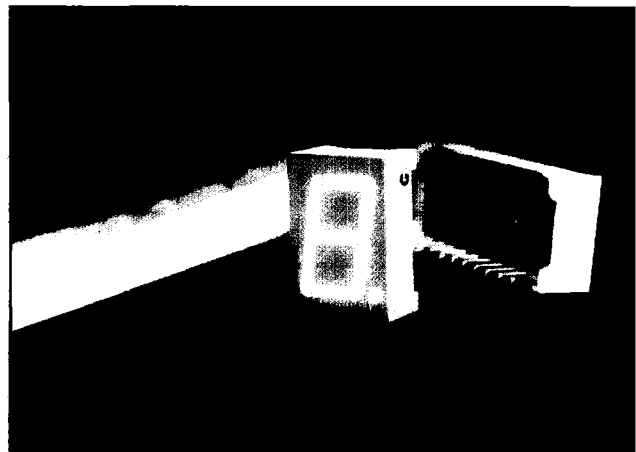




290 E. Hellen Rd
Palatine, IL 60067
☎ 1-847-359-2790
☎ 1-847-359-8904
🌐 www.lumex.com.

**PRODUCT SELECTION GUIDE 2007-3
ISSUE 1**



right angle digi-lites[®]

RIGHT ANGLE LED DISPLAYS AND BARS



LUMXS002

right angle led displays



Right Angle Displays eliminate the need for very expensive sockets while assisting in easy installation right angle to the board

- Instrument Panels
- Test Equipment
- Medical Diagnostics
- Control Panels

PRODUCT SELECTION TABLE

LUMEX PART NUMBER	λ Pk nm	Iv (μ CD) @ 20 mA (Typ)	Emitted Color	Common P/N	Vf @20 mA	Power off colors		Fig. Nbr
						Face	Segment	
						Grey	White	
						Grey	White	
						Grey	White	
						Grey	White	
LDQ-M3042RI-RA	565	4800	Green	(+)	2.2	Grey	White	1
LDQ-N3042RI-RA	565	4800	Green	(-)	2.2	Grey	White	1
LDQ-M3043RI-RA	585	4800	Yellow	(+)	2.1	Grey	White	1
LDQ-N3043RI-RA	585	4800	Yellow	(-)	2.1	Grey	White	1
						Grey	White	
						Grey	White	

LUMEX PART NUMBER	λ Pk nm	Iv (μ CD) @ 20 mA (Typ)	Emitted Color	Common P/N	Vf @20 mA	Power off colors		Fig. Nbr
						Face	Segment	
						Grey	White	
						Grey	White	
						Grey	White	2
						Grey	White	2
LDD-E302NI-RA	565	4800	Green	(+)	2.2	Grey	White	2
LDD-F302NI-RA	565	4800	Green	(-)	2.2	Grey	White	2
LDD-E303NI-RA	585	4800	Yellow	(+)	2.1	Grey	White	2
LDD-F303NI-RA	585	4800	Yellow	(-)	2.1	Grey	White	2
						Grey	White	2
						Grey	White	2

LUMEX PART NUMBER	λ Pk nm	Iv (μ CD) @ 20 mA (Typ)	Emitted Color	Common P/N	Vf @20 mA	Power off colors		Fig. Nbr
						Face	Segment	
						Grey	White	3
						Grey	White	3
						Grey	White	3
						Grey	White	3
LDS-M512RI-RA	565	4800	Green	(+)	2.2	Grey	White	3
LDS-N512RI-RA	565	4800	Green	(-)	2.2	Grey	White	3
LDS-M513RI-RA	585	4800	Yellow	(+)	2.1	Grey	White	3
LDS-N513RI-RA	585	4800	Yellow	(-)	2.1	Grey	White	3
LDS-M516RI-RA	660	2800	Sup-Red	(+)	1.6	Grey	White	3
LDS-N516RI-RA	660	2800	Sup-Red	(-)	1.6	Grey	White	3

1-800-278-5666

right angle led displays

Right Angle Displays eliminate the need for very expensive sockets while assisting in easy installation right angle to the board


- Instrument Panels
- Test Equipment
- Medical Diagnostics
- Control Panels

PRODUCT SELECTION TABLE

LUMEX PART NUMBER	λ Pk nm	Iv (μ CD) @ 20 mA (Typ)	Emitted Color	Common P/N	Vf @20 mA	Power off colors		Fig. Nbr
						Face	Segment	
						Grey	White	
						Grey	White	
						Grey	White	
						Grey	White	
LDD-M512RI-RA	565	4800	Green	(+)	2.2	Grey	White	4
LDD-N512RI-RA	565	4800	Green	(-)	2.2	Grey	White	4
LDD-M513RI-RA	585	4800	Yellow	(+)	2.1	Grey	White	4
LDD-N513RI-RA	585	4800	Yellow	(-)	2.1	Grey	White	4
						Grey	White	
						Grey	White	

LUMEX PART NUMBER	λ Pk nm	Iv (μ CD) @ 20 mA (Typ)	Emitted Color	Common P/N	Vf @20 mA	Power off colors		Fig. Nbr
						Face	Segment	
						Grey	White	
						Grey	White	
						Grey	White	
						Grey	White	
LDQ-M512RI-RA	565	4800	Green	(+)	2.2	Grey	White	5
LDQ-N512RI-RA	565	4800	Green	(-)	2.2	Grey	White	5
LDQ-M513RI-RA	585	4800	Yellow	(+)	2.1	Grey	White	5
LDQ-N513RI-RA	585	4800	Yellow	(-)	2.1	Grey	White	5
						Grey	White	
						Grey	White	

LUMEX PART NUMBER	λ Pk nm	Iv (μ CD) @ 20 mA (Typ)	Emitted Color	P/N	Vf @20 mA	Power off colors		Fig. Nbr
						Face	Segment	
						Grey	White	
						Grey	White	
SSA-LXB10GW-RA	565	3800	Green	(DIP)	2.2	Grey	White	6
SSA-LXB10YW-RA	585	3800	Yellow	(DIP)	2.1	Grey	White	6
	565	3800	Green	(DIP)	2.1	Grey	White	6
SSA-LXB10G5Y273-RA	585	3800	Yellow	(DIP)	2.1	Grey	White	6
	585	3800	Red	(DIP)	2.1	Grey	White	6

 1-800-278-5666

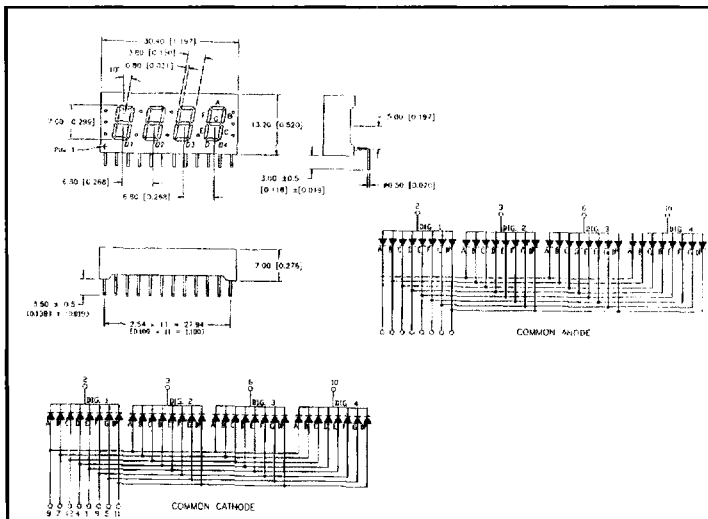


FIG. 1

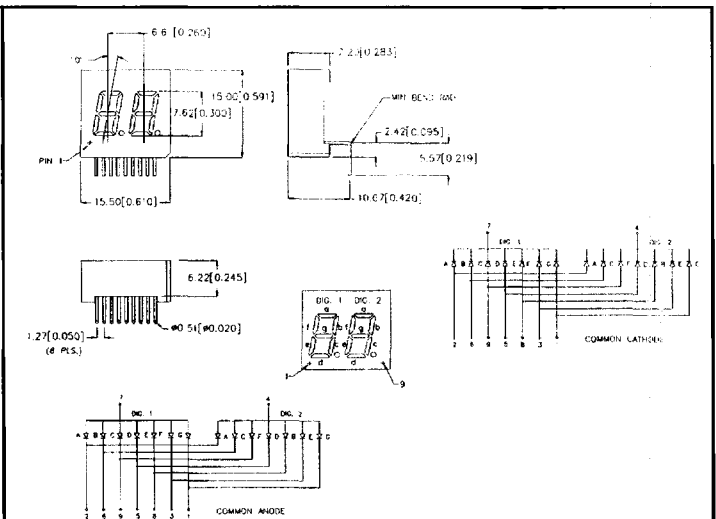


FIG. 2

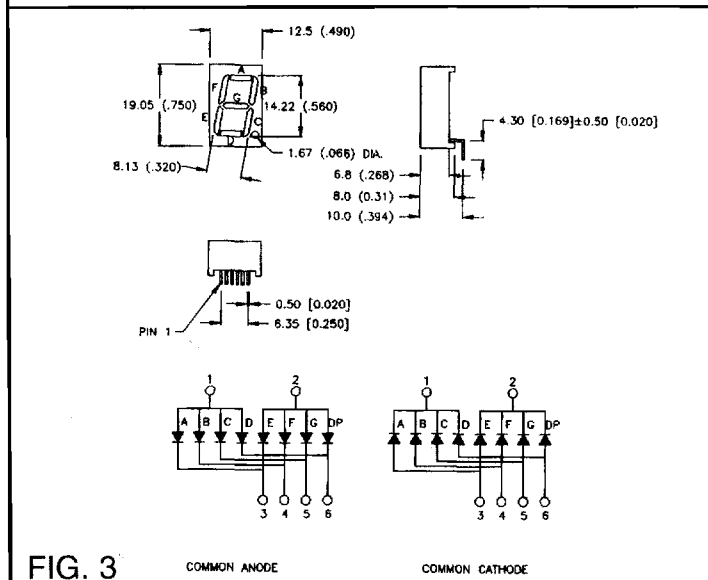


FIG. 3

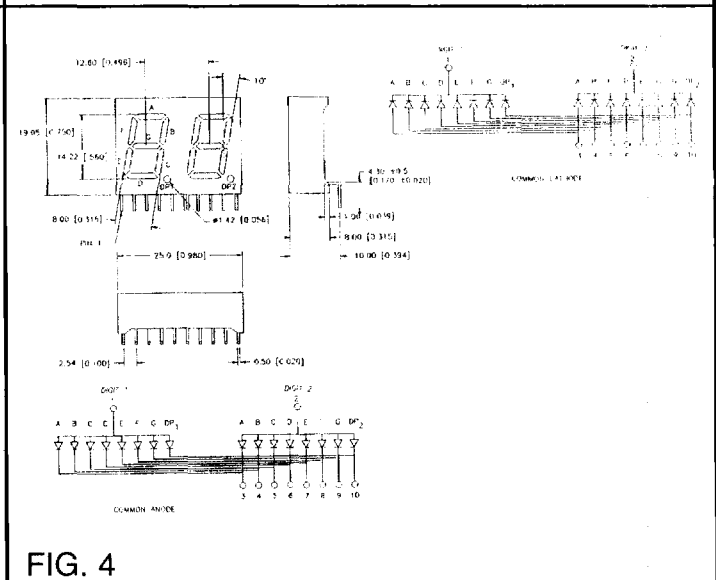


FIG. 4

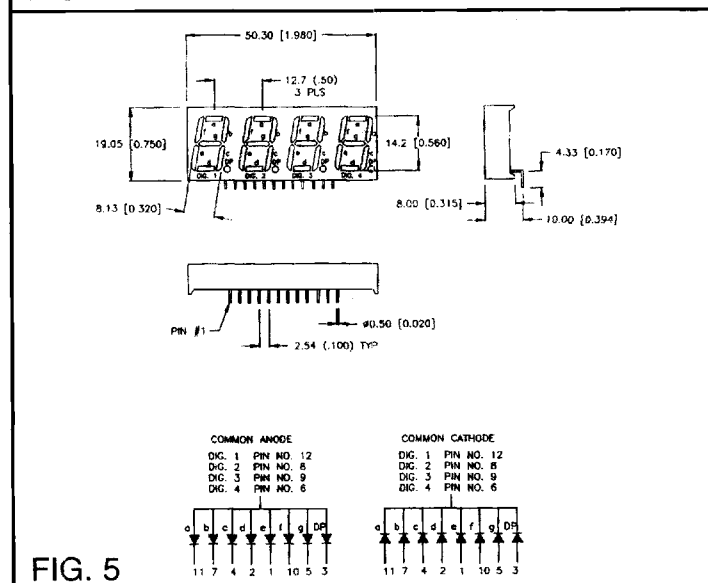


FIG. 5

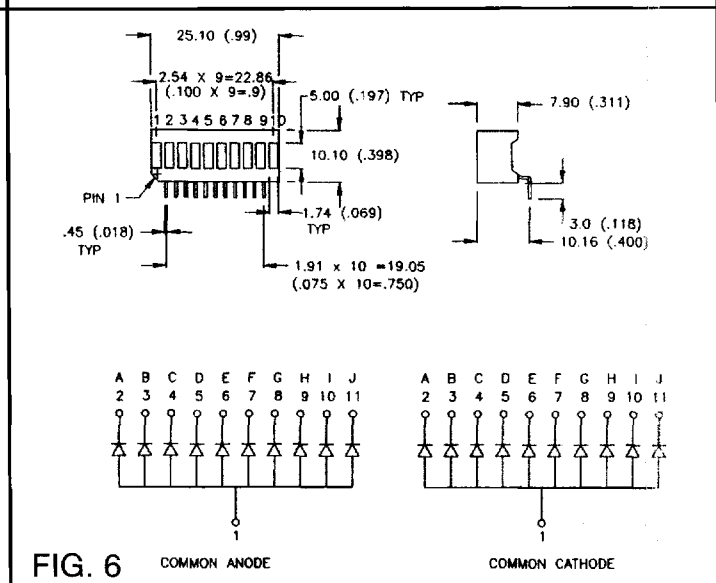


FIG. 6

