

**PLEASE CHECK WWW.MOLEX.COM FOR LATEST PART INFORMATION**

**Part Number:** [0879858030](#)  
**Status:** **Active**  
**Description:** 2.00mm (.079") Pitch Milli-Grid™ IDT Receptacle, Dual Row, with Center Polarization Key and Embossed Metal Latch, 30 Circuits, 0.38µm (15µ") Gold(Au) Plating on contact area, 1.88µm (74µ") Tin(Sn) Plating on IDT area, Lead free

**Documents:**

[3D Model](#) [Product Specification PS-87985-026 \(PDF\)](#)  
[Drawing \(PDF\)](#) [RoHS Certificate of Compliance \(PDF\)](#)

**General**

Product Family	IDT and Solder Connectors
Series	<a href="#">87985</a>
Crimp Quality Equipment	Yes
Product Name	Milli-Grid™
Use With	Stranded Flat Ribbon Cables

**Physical**

Circuits (Loaded)	30
Circuits (maximum)	30
Durability (mating cycles max)	500
Gender	Receptacle
Glow-Wire Compliant	No
Lock to Mating Part	Yes
Material - Metal	Beryllium Copper, Stainless Steel
Number of Rows	2
Packaging Type	Tray
Panel Mount	No
Pitch - Mating Interface (in)	0.079 In
Pitch - Mating Interface (mm)	2.00 mm
Pitch - Term. Interface (in)	0.079 In
Pitch - Term. Interface (mm)	2.00 mm
Polarized to Mating Part	Yes
Temperature Range - Operating	-40°C to +85°C
Wire Size AWG	26, 28

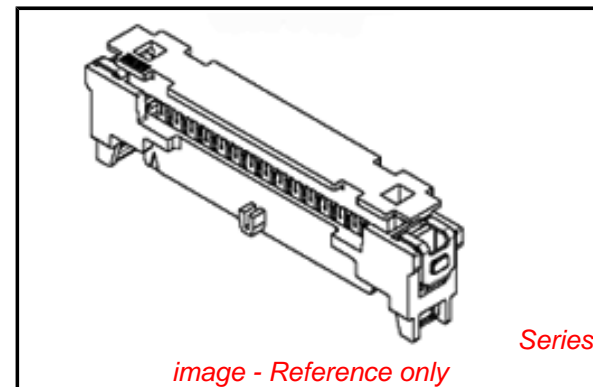
**Electrical**

Current - Maximum per Contact	1A
Voltage - Maximum	125V AC (RMS)/DC

**Material Info**

**Reference - Drawing Numbers**

Product Specification	PS-87985-026
Sales Drawing	SD-87985-015



*image - Reference only*

**EU RoHS**

**ELV and RoHS Compliant**  
**REACH SVHC**  
 Not Reviewed  
**Halogen-Free**  
**Status**  
 Not Reviewed

**China RoHS**



**Need more information on product environmental compliance?**

Email [productcompliance@molex.com](mailto:productcompliance@molex.com)  
 For a multiple part number RoHS Certificate of Compliance, [click here](#)

Please visit the [Contact Us](#) section for any non-product compliance questions.

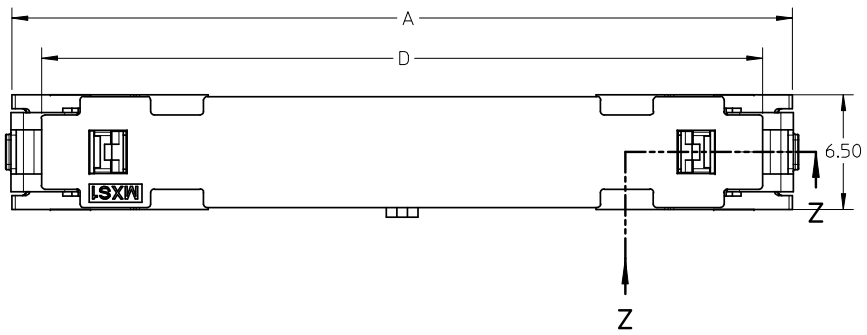
**Search Parts in this Series**

[87985Series](#)

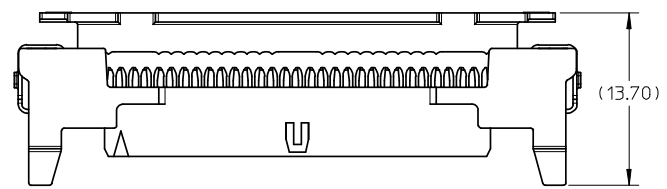
**Mates With**

Milli-Grid(TM) Headers [87981](#) , [87982](#) , [87983](#) , [87984](#)

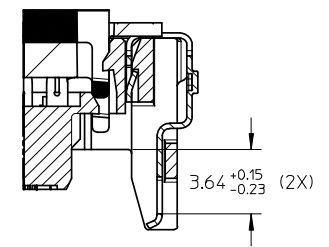
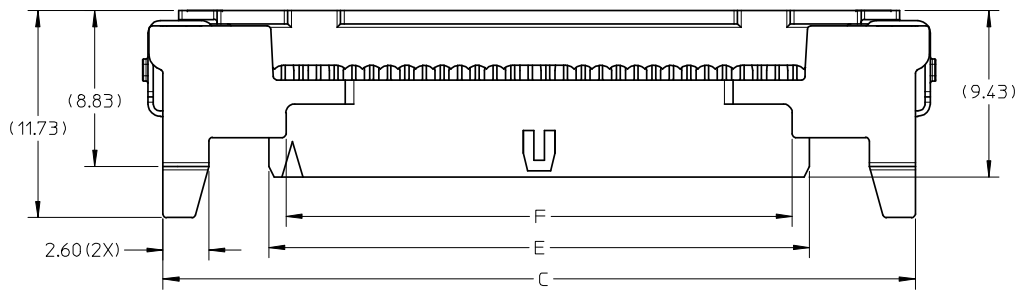
10 9 8 7 6 5 4 3 2 1



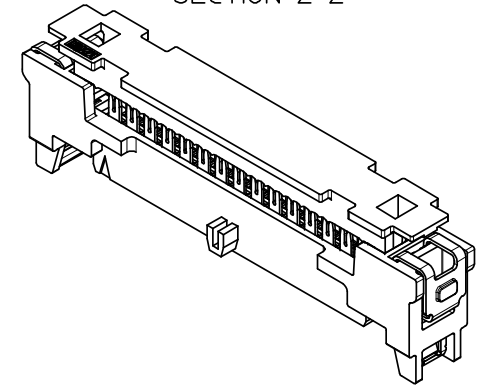
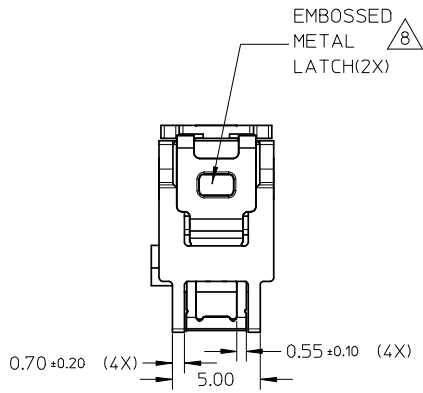
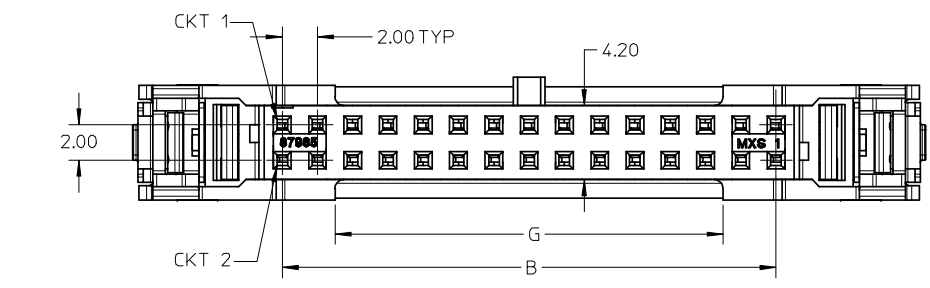
ASSEMBLY P/N	CKT SIZE	DIMENSION						
		A	B	C	D	E	F	G
87985-8030	30	44.25	28.00	42.65	40.90	30.55	28.70	22.00
87985-8040	40	54.25	38.00	52.65	50.90	40.55	38.70	32.00
87985-8044	44	58.25	42.00	56.65	54.90	44.55	42.70	36.00
87985-8050	50	64.25	48.00	62.65	60.90	50.55	48.70	42.00



UPPER HOUSING IN OPEN POSITION



SECTION Z-Z



- NOTES:
- MATERIAL :  
HOUSING : PBT, GLASS FILLED, UL94V-0, COLOR: GRAY,  
UPPER HOUSING: PA66, GLASS FILLED, UL94V-0, COLOR: GRAY,  
TERMINAL : COPPER ALLOY.
  - PLATING:  
0.38µM GOLD IN CONTACT AREA AND 1.88µM TIN IN IDT AREA OVER 1.25µM NICKEL OVERALL
  - FOR ILLUSTRATION PURPOSES, 30 CIRCUIT SIZE WAFER IS SHOWN.
  - THIS IS A LEAD FREE PRODUCT.
  - PRODUCT SPECIFICATION : PS-87985-026
  - PRODUCTS ARE PACKED IN TRAY.
  - PRODUCTS ARE MATED WITH 87981, 87982, 87983, 87984 SERIES.
  - LATCHES ARE NOT TO BE DEPRESSED DURING MATING.

REMOVE SERIES NO. EC NO: S2008-0476 DRWN: JTAN02 CHKD: BOKOK APPR: KCLING	2007/12/11 2007/12/11 2007/12/13	QUALITY SYMBOLS ▽=0 ◻=0	GENERAL TOLERANCES (UNLESS SPECIFIED)		DIMENSION STYLE MM ONLY		SCALE NTS	DESIGN UNITS METRIC	THIRD ANGLE PROJECTION		
				mm	INCH	DRAWN BY JTAN02	DATE 2006/11/21	TITLE MGRID, 2.00 IDT RECEPT. W/EMBOSSED METAL LATCH (W/O TRIANGLE PRINT)			
			4 PLACES	± ---	± ---	CHECKED BY BOKOK	DATE 2006/11/23	MOLEX INCORPORATED			
			3 PLACES	± ---	± ---	APPROVED BY PTLIM	DATE 2006/11/23	DOCUMENT NO. SD-87985-015			
			2 PLACES	± 0.2	± ---	MATERIAL NO. SEE TABLE		SHEET NO. 1 OF 1			
			1 PLACE	± ---	± ---	THIS DRAWING CONTAINS INFORMATION THAT IS PROPRIETARY TO MOLEX INCORPORATED AND SHOULD NOT BE USED WITHOUT WRITTEN PERMISSION					
DRAFT WHERE APPLICABLE MUST REMAIN WITHIN DIMENSIONS			ANGULAR ± 3 °								

9 8 7 6 5 4 3 2 1