

PRELIMINARY

2.45GHz Balun/Filter Combination

P/N 2450FB39C100

Detail Specification: 06/05/07

Page 1 of 2

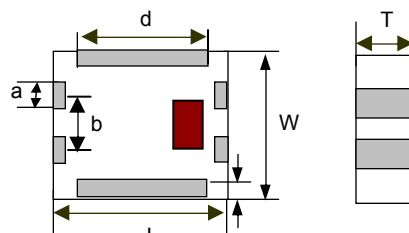
General Specifications

| | |
|-----------------------------|--------------|
| Part Number | 2450FB39C100 |
| Frequency (MHz) | 2400 - 2500 |
| Unbalanced Impedance | 50 Ω |
| Balanced Impedance | 100 Ω |
| Insertion Loss | 3.0 dB max. |
| Return Loss | 9.5 dB min. |
| Phase Difference | 180° \pm 8 |
| Amplitude Difference | 1.0 dB max. |

| | |
|---------------------------------|-------------------------|
| Attenuation (dB) | 45 min. @ 880~960MHz |
| | 38 min. @ 1710~1880 MHz |
| | 35 min. @ 1880~1990 MHz |
| | 20 min. @ 2110~2170 MHz |
| | 30 min. @ 4800~5000MHz |
| Operating + Storage Temp | -40 to +85°C |
| Reel Quantity | 3000 |
| Power Capacity | 1 watt max. |
| MSL | 2 |

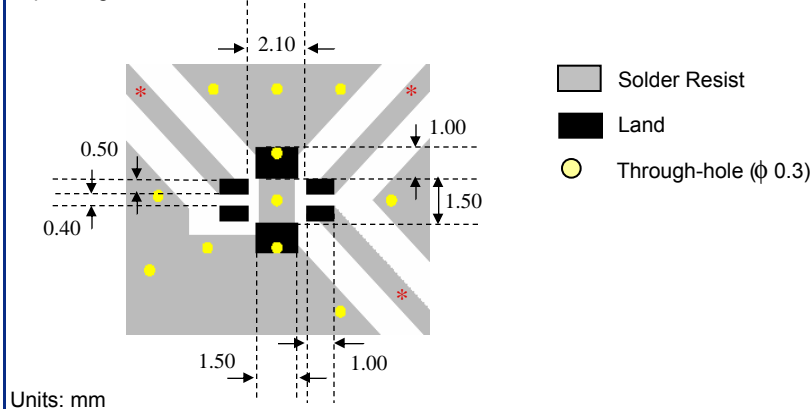
Mechanical Dimensions

| | In | mm |
|----------|--------------------|-----------------|
| L | 0.098 \pm 0.008 | 2.50 \pm 0.20 |
| W | 0.079 \pm 0.008 | 2.00 \pm 0.20 |
| T | 0.043 \pm 0.004 | 1.10 \pm 0.10 |
| a | 0.016 \pm 0.008 | 0.40 \pm 0.20 |
| b | 0.031 \pm 0.008 | 0.80 \pm 0.20 |
| c | 0.012 +.004/-0.008 | 0.30 +0.1/-0.2 |
| d | 0.075 \pm 0.008 | 1.90 \pm 0.20 |



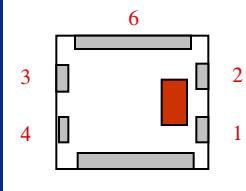
Mounting Considerations

* Line width should be designed to match 50 Ω characteristic impedance, depending on PCB material and thickness.



Terminal Configuration

| No. | Function |
|-----|-----------------|
| 1 | Unbalanced Port |
| 2 | DC |
| 3 | Balanced Port |
| 4 | Balanced Port |
| 5 | GND |
| 6 | GND |



Johanson Technology, Inc. reserves the right to make design changes without notice.
All sales are subject to Johanson Technology, Inc. terms and conditions.

PRELIMINARY

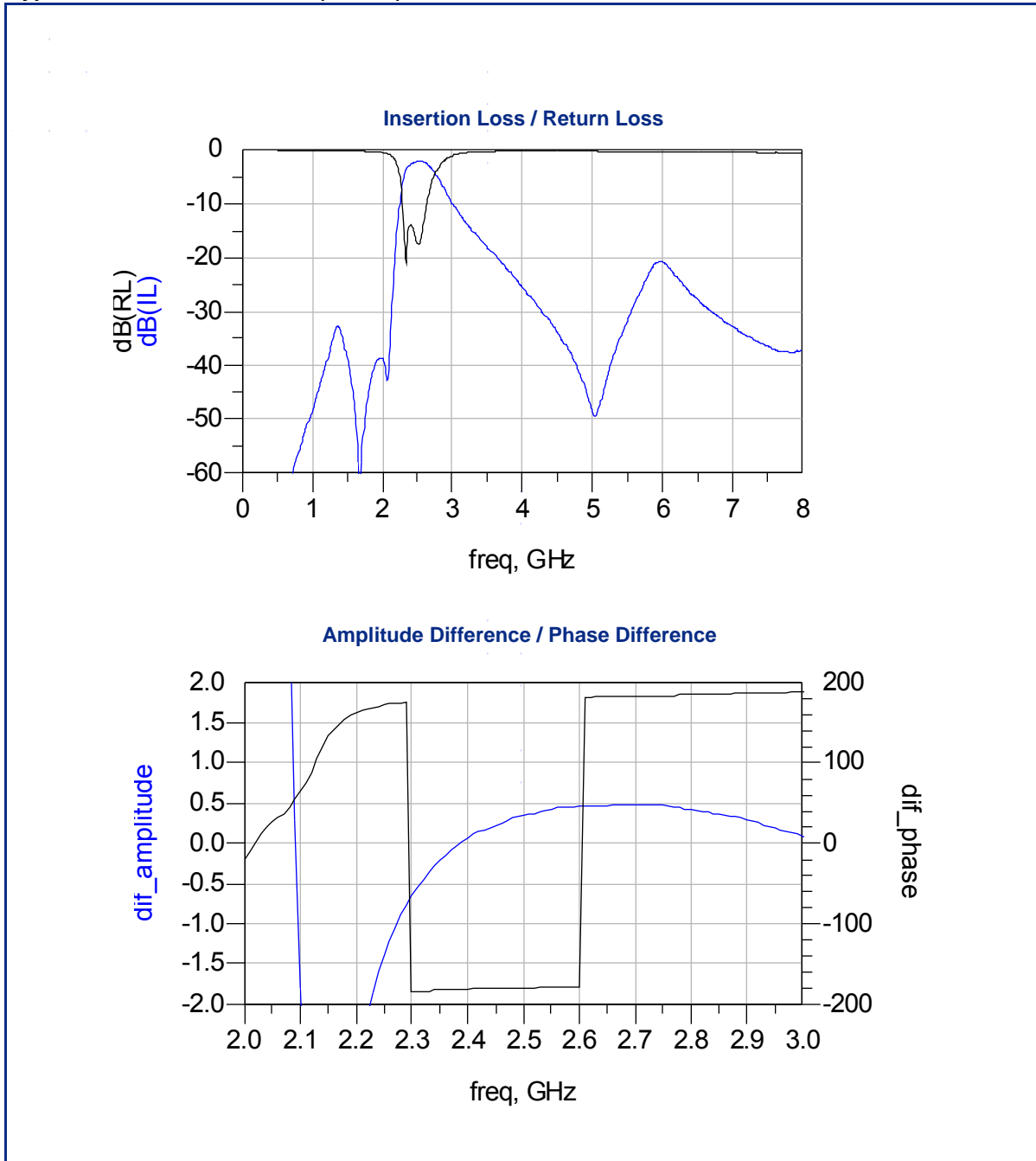
2.45GHz Balun/Filter Combination

P/N 2450FB39C100

Detail Specification: 06/05/07

Page 2 of 2

Typical Electrical Performance (T=25°C)



Johanson Technology, Inc. reserves the right to make design changes without notice.
All sales are subject to Johanson Technology, Inc. terms and conditions.



www.johansontechnology.com
4001 Calle Tecate • Camarillo, CA 93012 • TEL 805.389.1166 FAX 805.389.1821

2007 Johanson Technology, Inc. All Rights Reserved