

AC Filter 2-Stage, Broad Band Attenuation

**Description**

- Chassis:
Screw-on mounting, from top
- Line-filter in standard version, 2 positions, very high attenuation
- Very high symmetrical and asymmetrical attenuation loss in the frequency range from 10kHz up to 30MHz

Approvals

- VDE License Number: 40004673
- UL License Number: E72928

Characteristics

- Designed for high current applications
- Protection against interference voltage from the mains
Possible interferences generated in the equipment are strongly attenuated
- Especially designed for industrial applications such as: Frequency Converters, Stepper Motor Drives, UPS-Systems, Inverters
- Qualified for use in equipment according IEC/EN 60950

Other versions on request

- Version with wire connection

References

[General Product Information](#)

Weblinks

[Approvals](#), [RoHS](#), [CHINA-RoHS](#), [Mating Connectors](#), [e-Store](#), [Distributor-Stock-Check](#), [Accessories](#)

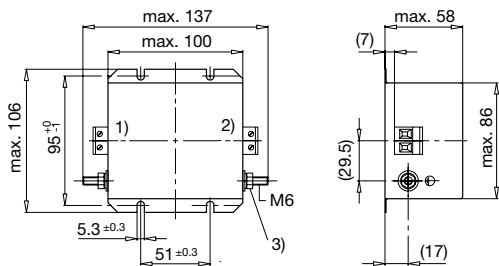
Technical Data

Ratings IEC	8 - 25A @ Ta 40 °C / 250 VAC; 50Hz
Ratings UL/CSA	8 - 25A @ Ta 40 °C / 125 VAC; 60Hz
Leakage Current	industrial < 3.5 mA (V / 60Hz)
Dielectric Strength	> 1.7 kVDC between L-N
	> 2.7 kVDC between L/N-PE Test voltage (2 sec)
Allowable Operation Temp.	-25 °C to 100 °C
Climatic Category	25/100/21 acc. to IEC 60068-1
Protection Class	Suitable for appliances with protection class 1 acc. to IEC 61140
Terminal	Screw
Material: Housing	Metal

Line Filter	Standard and Industrial Version, IEC 60939, IEC 60601-1, UL 1283, UL 544, EN 133 200, CSA C22.2 no. 8 Technical details
MTBF	> 200'000h acc. to MIL-HB-217 F

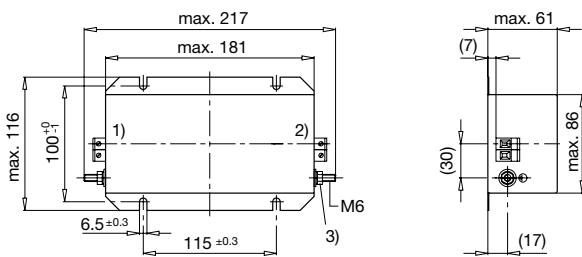
Dimensions

Case 24-2



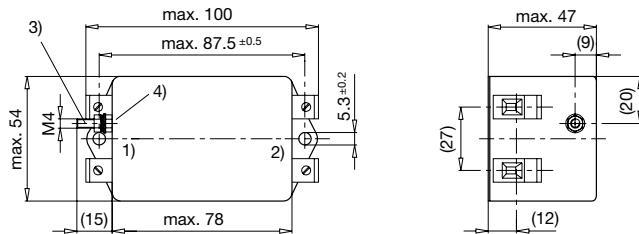
1) Line 2) Load 3) Nut torque 3...4 Nm.

Case 31-2



1) Line 2) Load 3) Nut torque 3...4 Nm

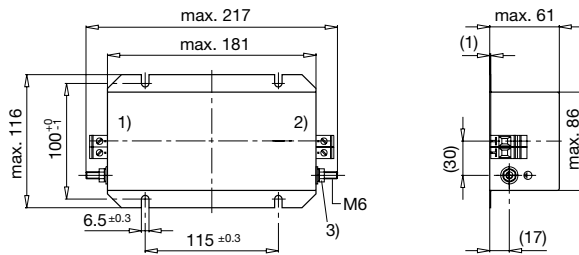
Case 16-2



1) Line 2) Load 3) Nut torque 3...4 Nm 4) Do not unscrew lock-nut

Case 31-6

!!

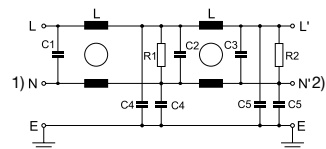
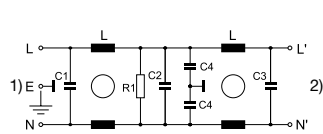


1) Line 2) Load 3) Nut torque 3...4 Nm

Diagrams

S1 standard version

S2 standard version



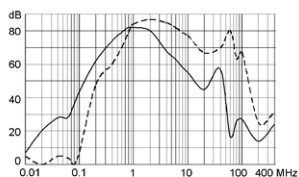
1) Line
2) Load

1) Line
2) Load

Attenuation Loss

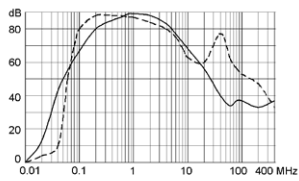
Standard version
8 A

--- differential mode ____ common mode

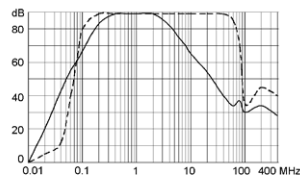


Industrial Version

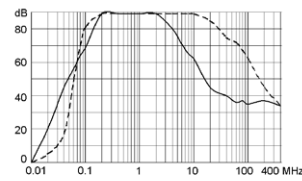
12 A



16 A



25 A



Variants

Rated Current [A]	Filter-Type	Leakage Current [mA]	L [mH]	C1 (X2) [μ F]	C2 (X2) [μ F]	C3 (X2) [μ F]	C4 (Y2) [nF]	C5 (Y2) [nF]	R1, R2 [M Ω]	Diagram	Clamps [mm ²]	Weight [g]	Housing	Order Number
8	Standard Version	0.25	2 x 7	0.1	0.15	0.47	2.2	-	1	S1	4	410	16-2	5500.2068
12	Industrial Version	3.5	2 x 5	2.2	2.2	2.2	33	2.2	0.5	S2	4	1000	24-2	5500.2069
16	Industrial Version	3.5	2 x 3.5	2.2	2.2	2.2	33	2.2	0.5	S2	4	2400	31-2	5500.2070
25	Industrial Version	3.5	2 x 3.5	2.2	2.2	2.2	33	2.2	0.5	S2	6	2500	31-6	5500.2071

Packaging unit

5 Pcs