



TAI-SAW TECHNOLOGY CO., LTD.

No. 3, Industrial 2nd Rd., Ping-Chen Industrial District,
Taoyuan, 324, Taiwan, R.O.C.

TEL: 886-3-4690038 FAX: 886-3-4697532

E-mail: tstsales@mail.taisaw.com Web: www.taisaw.com

Approval Sheet For Product Specification

Issued Date:

Product Name: SAW Filter 472.2MHz SMD 7.0x5.0mm

TST Parts No.:TB0576A

Customer Parts No.:_____

Company: _____
Division: _____
Approved by : _____
Date: _____

Checked by: _____ Andy Lee

Approval by: _____ Francis Chen

Date: _____ 2007/12/28



TAI-SAW TECHNOLOGY CO., LTD.

No. 3, Industrial 2nd Rd., Ping-Chen Industrial District,
Taoyuan, 324, Taiwan, R.O.C.

TEL: 886-3-4690038 FAX: 886-3-4697532

E-mail: tstsales@mail.taisaw.com Web: www.taisaw.com

SAW Filter 472.2 MHz SMD 7.0mmX5.0mm

MODEL NO.: TB0576A

REV. NO. 1

A. MAXIMUM RATING:

1. Operating Temperature: -40°C to +85°C
2. Storage Temperature: -40°C to +85°C
3. Maximum Input Power : 10dBm

RoHS Compliant
 Lead free
 Lead-free soldering

B. ELECTRICAL CHARACTERISTICS:

1. Ambient Temperature: 25 °

Item		Min.	Typical	Max.	
Center frequency	Fc	MHz	-	472.2	-
Insertion loss at Fc		dB	-	12.6	13.5
Bandwidth at -1.0dB		MHz	27.0	30.3	-
Amplitude Ripple (Fc ± 11.5 MHz)		dB	-	0.4	1.0
Group Delay Ripple (Fc ± 11.5 MHz)		nS	-	30	-
Attenuation (Reference level from minimum Insertion loss)					
	300 MHz ~ 447 MHz	dB	40	45	-
	499 MHz ~ 650 MHz	dB	35	40	-
Temp Coefficient		ppm/ C	-	-93	-

C. FREQUENCY CHARACTERISTICS :

1.S21 Response

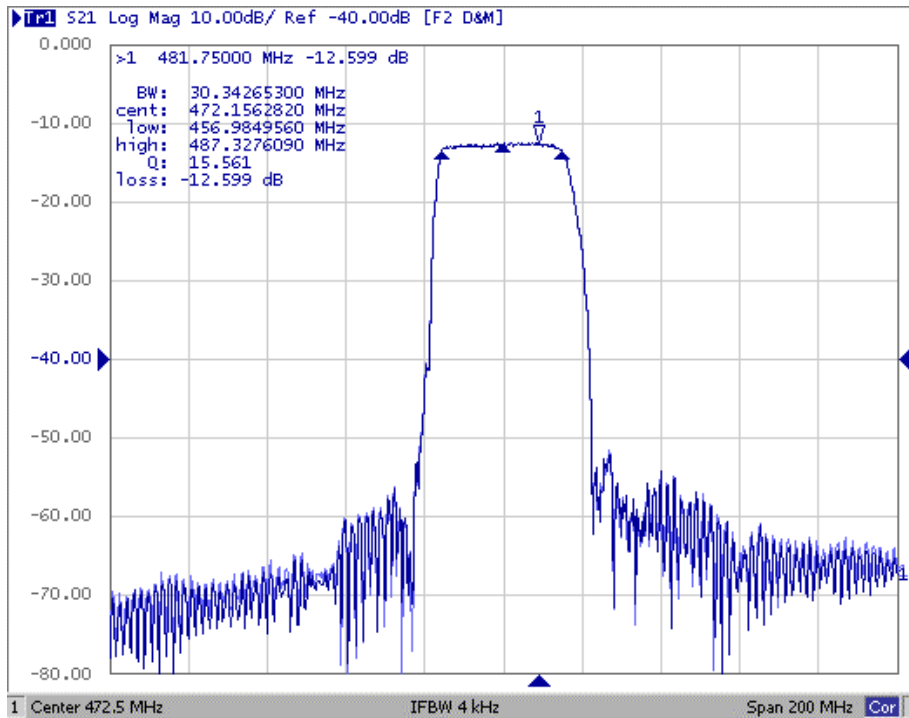


Fig1. Horizontal: 20MHz/Div Vertical: 10dB/Div

2. Passband Ripple

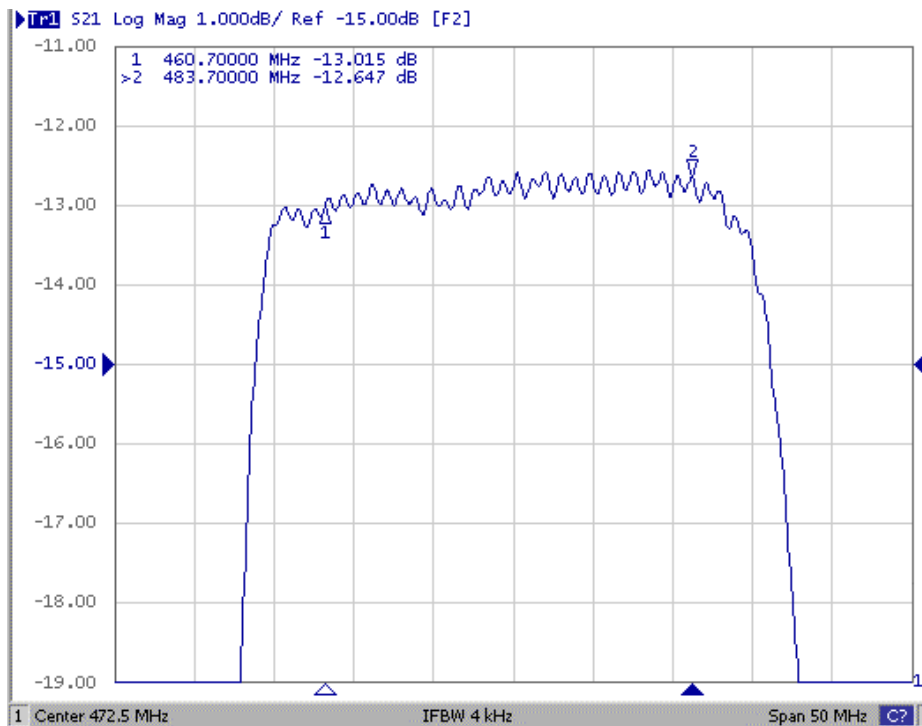


Fig2. Horizontal: 5MHz/Div Vertical: 1dB/Div

3. Group Delay Ripple

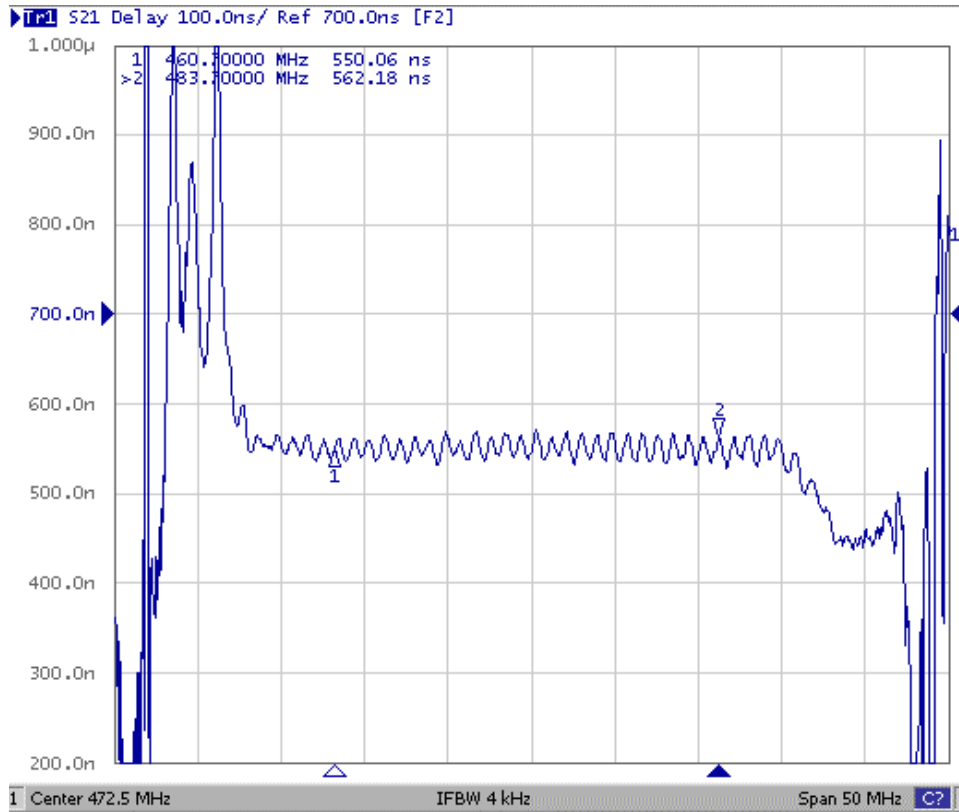
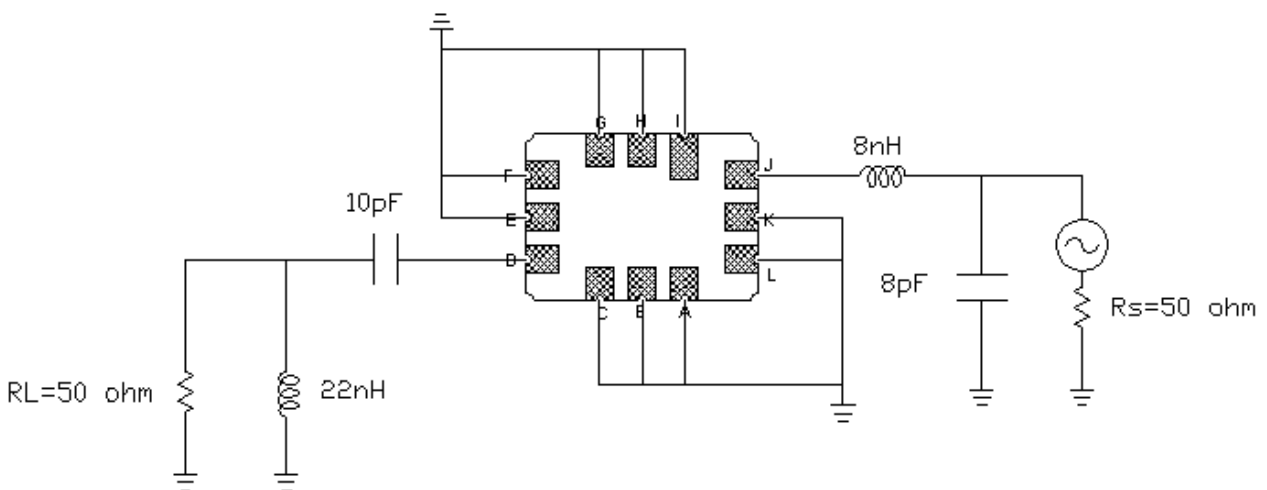


Fig3. Horizontal: 5MHz/Div Vertical: 100nS/Div

D. MEASUREMENT CIRCUIT

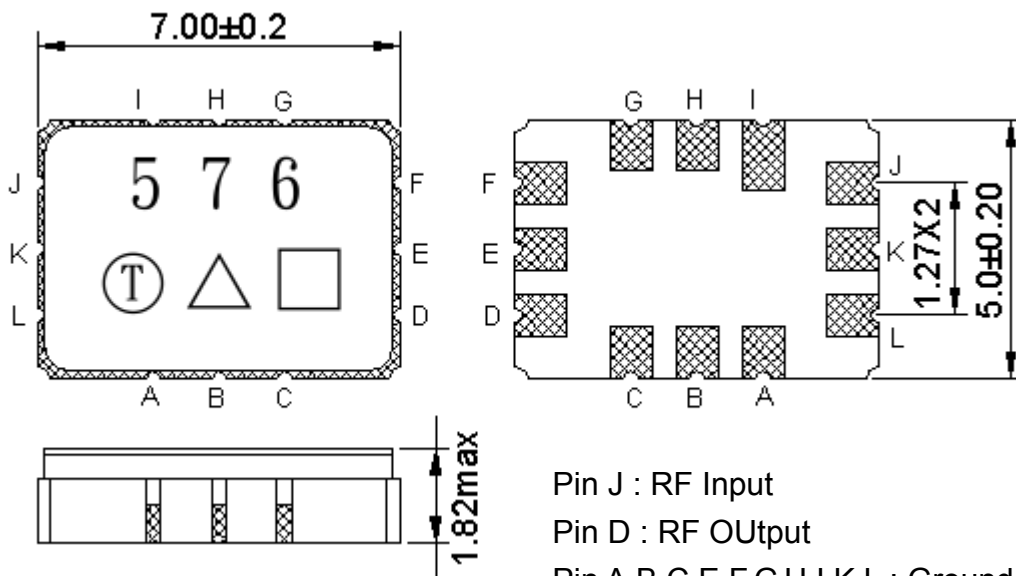
1. Single ended input 50 ohm to Single ended Output 50 ohm

:



Note: The matching structure will change according to different test fixture.

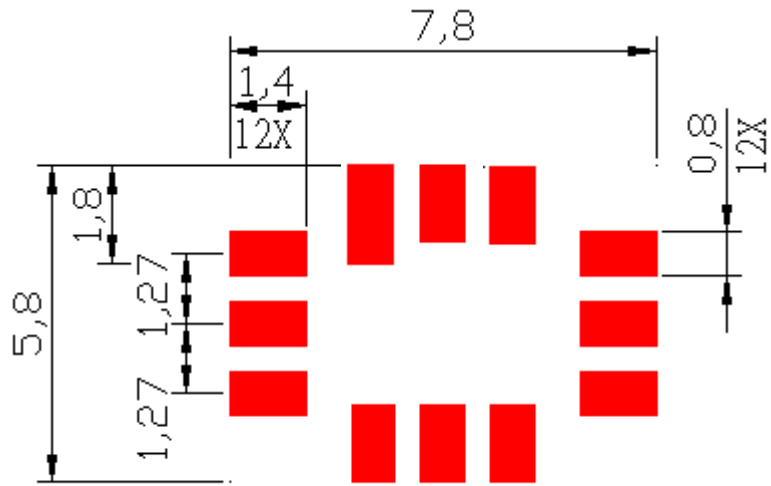
E.OUTLINE DRAWING:



Pin J : RF Input
 Pin D : RF Output
 Pin A,B,C,E,F,G,H,I,K,L : Ground
 Unit: mm
 □ : Week Code (Follow the table from planner each year)
 △ : Product / Year Code

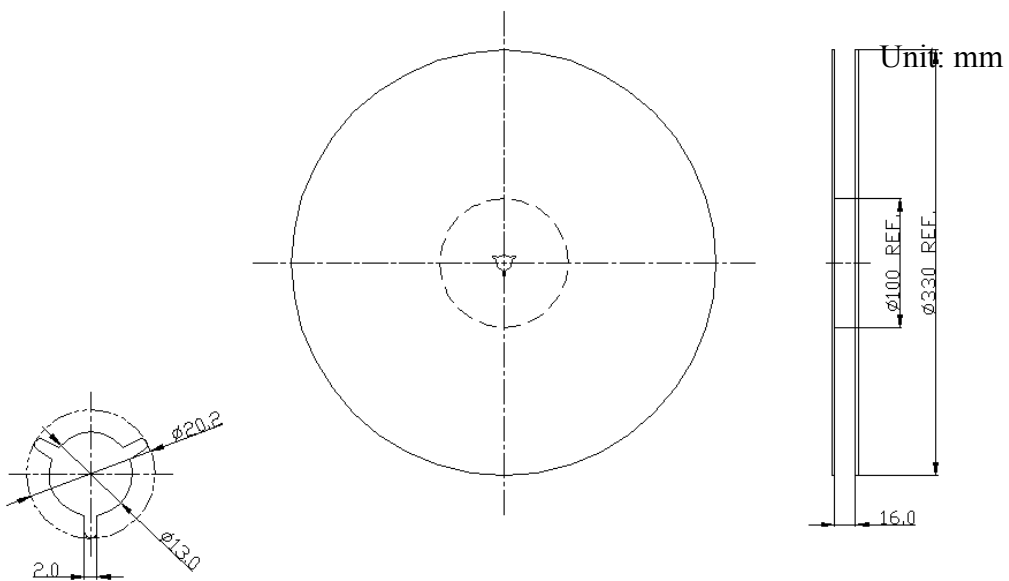
Year	2005 2009	2006 2010	2007 2011	2008 2012
Product Code	B	b	<u>B</u>	<u>b</u>

F. PCB Footprint:

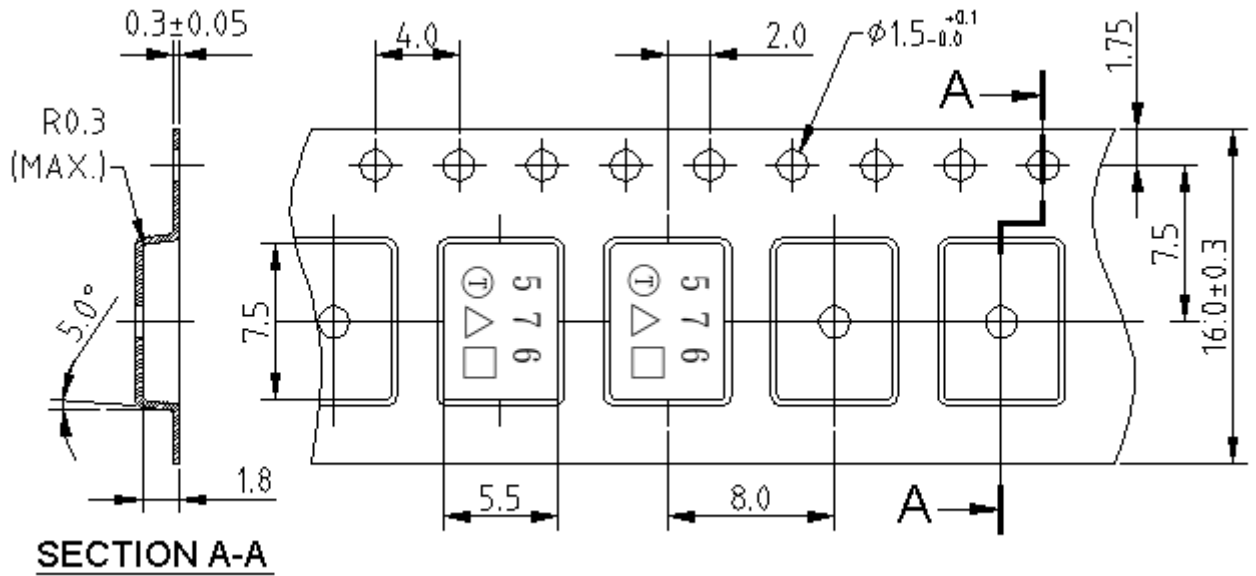


G. PACKING:

1. REEL DIMENSION



2. TAPE DIMENSION



Unit: mm

H. RECOMMENDED REFLOW PROFILE :

