



Shanghai Lunsure Electronic
Technology Co.,Ltd
Tel:0086-21-37185008
Fax:0086-21-57152769

PF501 thru PF507

Features

- Low Cost
- Low Leakage
- Low Forward Voltage Drop
- High Current Capability
- For Automotive Applications

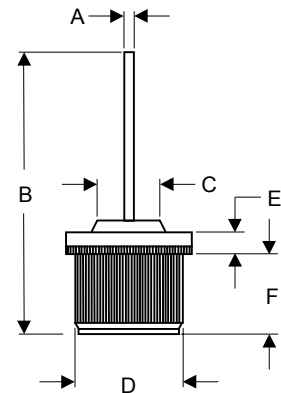
50Amp Standard Recovery Rectifier 50 to 1000 Volts

Maximum Ratings

- Operating Temperature: -55°C to +150°C
 - Storage Temperature: -55°C to +150°C
 - Standard polarity : Case is Cathode ; Lead is Anode
- Note for positive terminal part number is as shown
For negative terminal add an "N" to the suffix of the part number . i.e. PF501N

Catalog Number	Device Marking	Maximum Recurrent Peak Reverse Voltage	Maximum RMS Voltage	Maximum DC Blocking Voltage
PF501	---	50V	35V	50V
PF502	---	100V	70V	100V
PF503	---	200V	140V	200V
PF504	---	400V	280V	400V
PF505	---	600V	420V	600V
PF506	---	800V	560V	800V
PF507	---	1000V	700V	1000V

PRESSFIT



Electrical Characteristics @ 25°C Unless Otherwise Specified

Average Forward Current	$I_{F(AV)}$	50A	$T_A = 125^\circ\text{C}$
Peak Forward Surge Current	I_{FSM}	650A	8.3ms, half sine
Maximum Instantaneous Forward Voltage	V_F	1.0V	$I_{FM} = 50A;$ $T_J = 25^\circ\text{C}^*$
Maximum DC Reverse Current At Rated DC Blocking Voltage	I_R	1 μA 10 μA	$T_J = 25^\circ\text{C}$ $T_J = 125^\circ\text{C}$
Typical Junction Capacitance	C_J	150pF	Measured at 1.0MHz, $V_R=4.0V$

*Pulse test: Pulse width 300 μsec , Duty cycle 2%

DIM	INCHES		MM		NOTE
	MIN	MAX	MIN	MAX	
A	.097	.103	2.464	2.616	
B	1.063	1.142	27.00	29.00	
C	-----	.395	-----	10.04	
D	.501	.505	12.73	12.82	
E	.122	.130	3.10	3.30	
E	.258	.278	6.55	7.05	

PF501 thru PF507

Figure 1
Typical Forward Characteristics

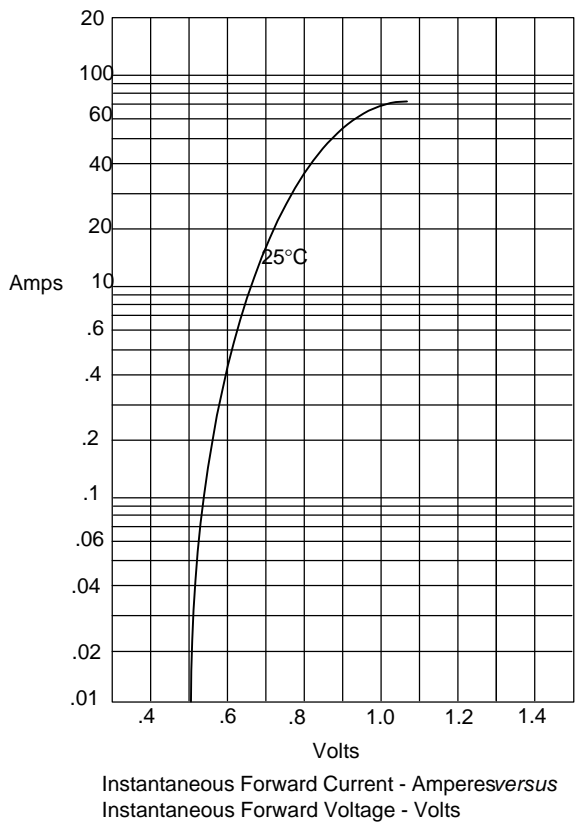


Figure 2
Forward Derating Curve

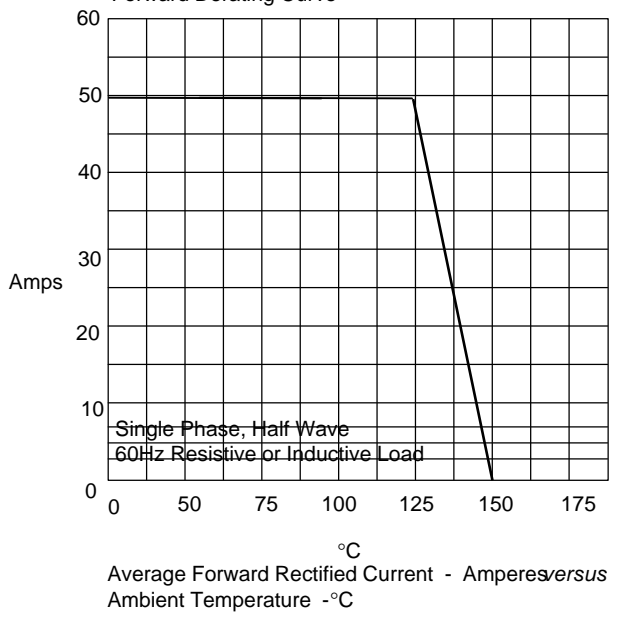


Figure 4
Peak Forward Surge Current

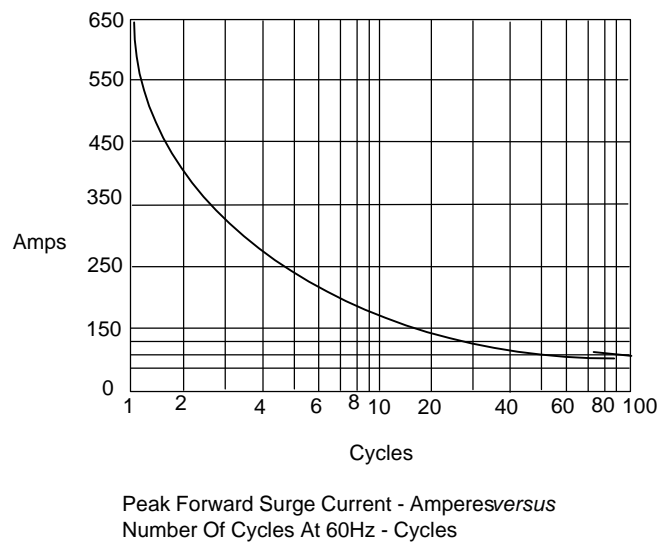


Figure 3
Junction Capacitance

