

OPTICAL FIELD INDICATOR

The model FXH Optical Field Indicator displays optical measurement signals from an optical field instrument via an optical star coupler or optical connection terminal.

SPECIFICATIONS

Functional specifications

- Indication:** 4 digits on LCD, % display
Industrial value display
- Setting:**
- Station No. of field instrument for indication
 - Channel address No. in case of temperature multipoint mode
 - Industrial value sector
- Power source:** Built-in lithium battery
(expected life: about 4 years)
- Self-diagnosis:** Abnormal drop of battery charge
- Explosion-proofing:**
JIS i3nG5, intrinsic safety
Safety barriers are not needed.
- Ambient temperature:**
-20 to +60°C
- Storage temperature:**
-30 to +70°C
- Ambient humidity:**
0 to 95%RH
- Transmission:** Only for signal reception with one optical fiber (free from effects of noise and surge)
- Transmission distance:**
1km max. from field indicators

Construction and material

- Finish color:** Epoxy-polyurethane double coating in silver (amplifier case cover Blue)
- Enclosure:** JIS C 0920 water jet-proof
(corresponding to IEC IP65 or NEMA 4)
- External dimensions (H × W × D) and mass (weight):**

	FXH1	FXH2
Dimensions [mm]	177 × 122 × 184.7	123 × 122 × 184.7
Mass (weight) [approx. kg]	2.8	2.8

Mounting method:

Mounted on horizontal or vertical 50A (2B) pipe by U bolt

Cable and connection:

Optical cable per Fuji spec. (separately available)
Connection; optical connector



Scope of delivery

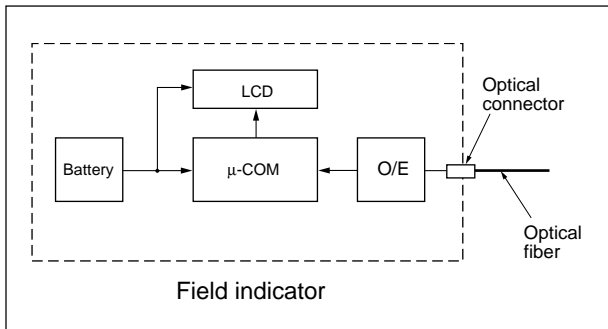
Instrument, fixture

Note: Technical terms are defined by ANSIS 51.1 and JEMIS 022-1983.

CODE SYMBOLS

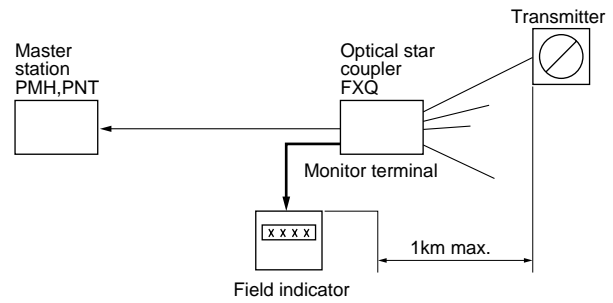
1	2	3	4	5	6	7	8	9	10	Description
F	X	H						1		Connecting optical cable 6mm dia.
									1	Connecting device For star coupler (FXQ) For optical connection terminal (PSM2)
									A	Field instrument Other than multi-point temperature converter (FRL) Multi-point temperature converter (FRL)
									B	
									1	Indication % display Industrial value display Industrial value display (with square root extraction) % display (with square root extraction)
									2	
									A	Explosionproof 0 Non-explosionproof 1 Intrinsic safety (i3nG5)
									B	
									C	
									D	
									0	Processing Y None B Acid/alkali-proof treatment
									1	

OPERATING PRINCIPLE DIAGRAM

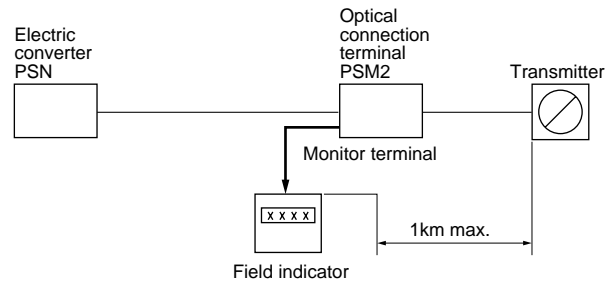


SYSTEM BLOCK DIAGRAM

(1) Star coupler connection (1:8 connection)



(2) 2-branch optical relay (with monitor terminal, type PSM2) connection (1:1 connection)



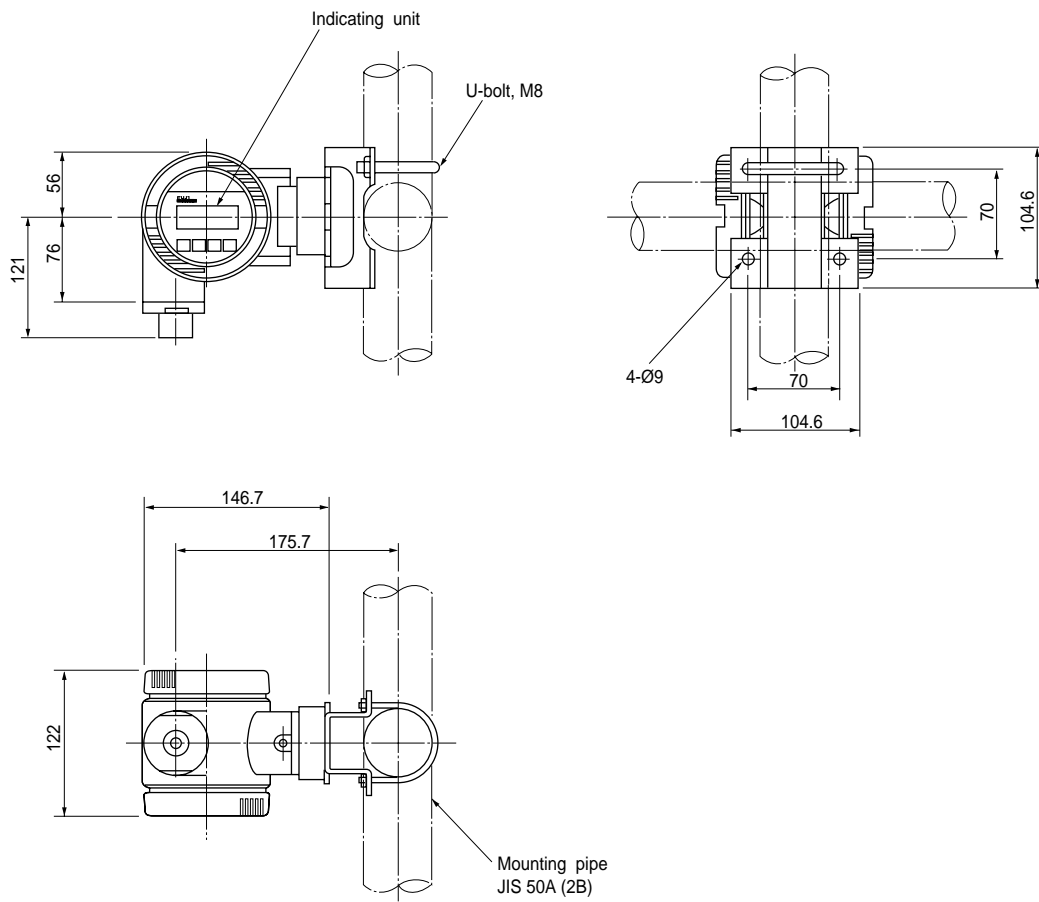
RELATED DEVICES

- Master station (EDS11-86)
- Optical star coupler (EDS8-48)
- Optical connection terminal (EDS8-45)
- HHC (EDS8-44)
- Connection assemble tool
- Optical connector
- Cable

ORDERING INFORMATION

1. Name of product
2. Type of product
3. Other

OUTLINE DIAGRAM (Unit:mm)



⚠ Caution on Safety

*Before using this product, be sure to read its instruction manual in advance.

Fuji Electric Systems Co., Ltd.

Head Office

6-17, Sanbancho, Chiyoda-ku, Tokyo 102-0075, Japan
<http://www.fesys.co.jp/eng>

Sales Div.

International Sales Dept.

No.1, Fuji-machi, Hino-city, Tokyo, 191-8502 Japan
Phone: 81-42-585-6201, 6202 Fax: 81-42-585-6187
<http://www.fic-net.jp/eng>