



# TAI-SAW TECHNOLOGY CO., LTD.

No. 3, Industrial 2nd Rd., Ping-Chen Industrial District,  
Taoyuan, 324, Taiwan, R.O.C.

TEL: 886-3-4690038 FAX: 886-3-4697532

E-mail: [tstsales@mail.taisaw.com](mailto:tstsales@mail.taisaw.com) Web: [www.taisaw.com](http://www.taisaw.com)

## Product Specifications Approval Sheet

Product Description: SAW Filter 284MHz SMD 3.8X3.8 mm(BW=8MHz)

TST Part No.: TA0205A

Customer Part No.: \_\_\_\_\_

Customer signature required
Company: _____
Division: _____
Approved by : _____
Date: _____

Checked by: Paul Ni *Paul Ni*

Approved by: Francis Chen *[Signature]*

Date: 2009/9/17

1. Customer signed back is required before TST can proceed with sample build and receive orders.
2. Orders received without customer signed back will be regarded as agreement on the specifications.
3. Any specifications changes must be approved upon by both parties and a new revision of specifications shall be released to reflect the changes.



# TAI-SAW TECHNOLOGY CO., LTD.

No. 3, Industrial 2nd Rd., Ping-Chen Industrial District,  
Taoyuan, 324, Taiwan, R.O.C.

TEL: 886-3-4690038 FAX: 886-3-4697532

E-mail: [tstsales@mail.taisaw.com](mailto:tstsales@mail.taisaw.com) Web: [www.taisaw.com](http://www.taisaw.com)

## 284MHz SAW Filter

MODEL NO.: TA0205A

REV. NO.:2

### A. MAXIMUM RATING:

1. Input Power Level: 0 dB<sub>m</sub>
2. DC voltage: 10 V
3. Operating Temperature: -10°C to +50°C
4. Storage Temperature: -40°C to +85°C

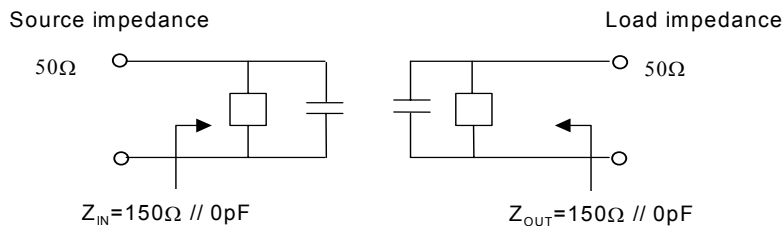
RoHS Compliant  
Lead free  
Lead-free soldering

### B. ELECTRICAL CHARACTERISTICS:

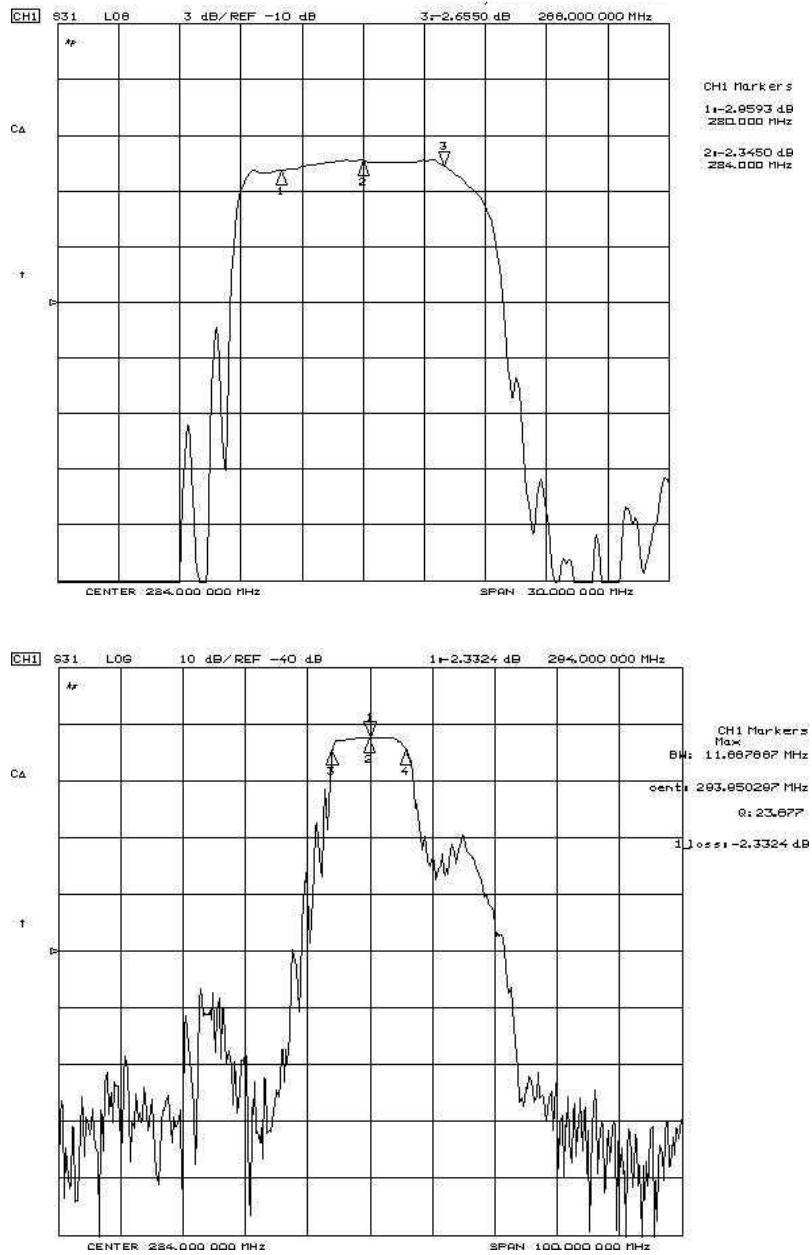
Characteristics	Specification	Note
Center frequency $F_C$ (MHz)	284	1
I.L. (Within $F_C \pm 4$ MHz) (dB)	4.5 max.	
Pass band $BW_{4.5dB}$ (MHz)	8.0 min.	1
Ripple( Within $F_C \pm 4$ MHz) (dB)	1.5 max.	1
Attenuation:( Reference level from 0 dB) (dB)		
$F_C - 100$ MHz to $-37.5$ MHz (dB)	48 min.	1
$F_C + 37.5$ MHz to $+ 100$ MHz (dB)	48 min.	
Impedance at $F_C$ ; Input $Z_{IN}=R_{IN} // C_{IN}$	150 $\Omega$ // 0 Pf	2
Output $Z_{OUT}=R_{OUT} // C_{OUT}$	150 $\Omega$ // 0 Pf	2

Note1. The standard definitions is in JIS C 6703

Note2.

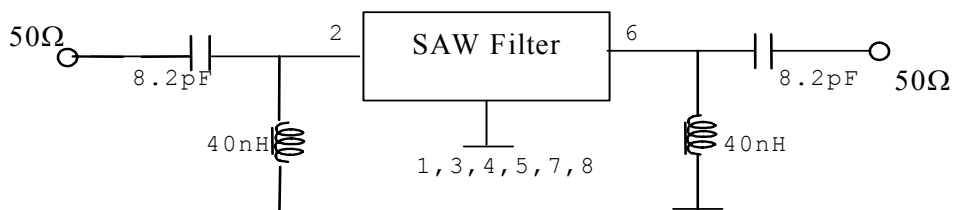


### C. Frequency Characteristics :

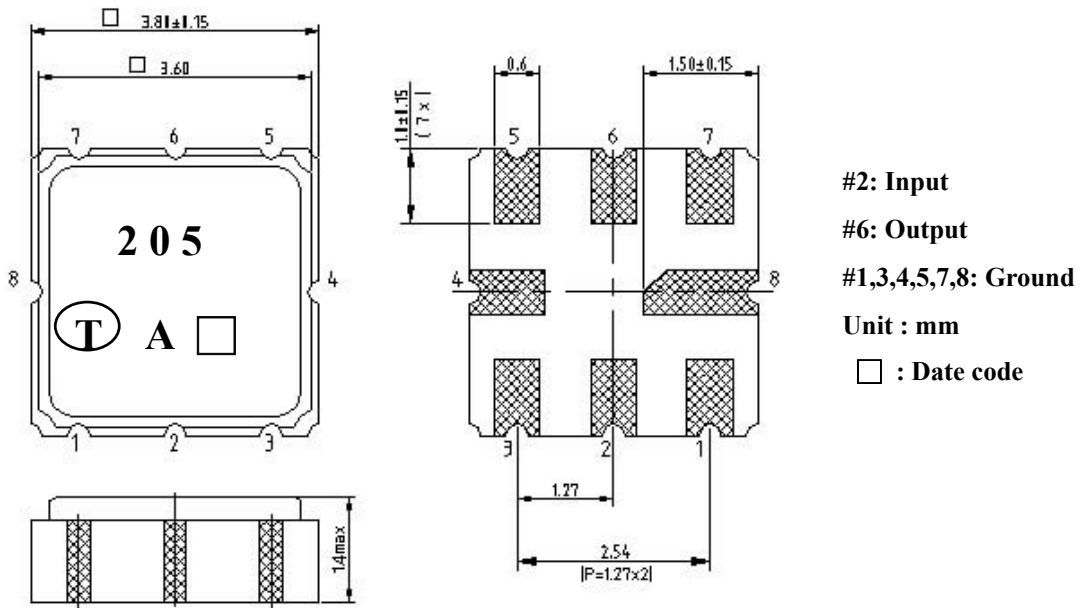


### D. MEASUREMENT CIRCUIT:

Network analyzer

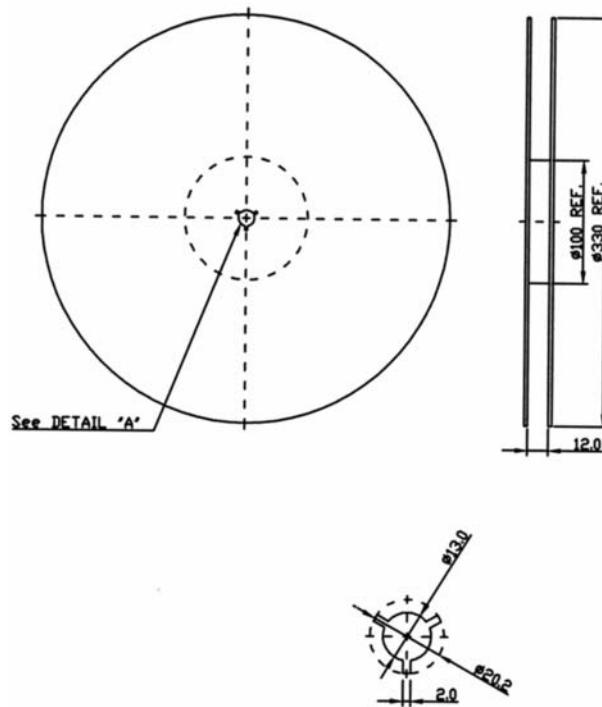


**E. OUTLINE DRAWING:**



**F. PACKING:**

1. REEL DIMENSION



2.TAPE DIMENSION

