



### Features

- Frequency Range: 10~3000MHz
- Standard Hermetic Package TO-8C, SMO-8C
- Operating Temperature Range: -55°C ~ +85°C

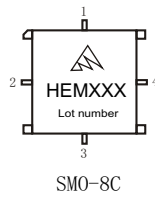
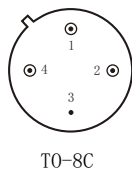
### Specifications (50 Ω, V<sub>CC</sub> = +12V, T<sub>A</sub> = -55°C ~ +85°C)

Parameter	Symbol	Unit	Guaranteed	Typical
Frequency Range	f <sub>L</sub> ~f <sub>H</sub>	MHz	10~3000	10~3500
Gain	G <sub>p</sub>	dB	11.0	12.0
Gain Flatness	ΔG <sub>p</sub>	dB	1.5	1.0
Noise Figure	F <sub>n</sub>	dB	3.0 Δ #	2.8
Input VSWR	VSWR <sub>i</sub>	---	2.0:1 Δ	1.7:1
Output VSWR	VSWR <sub>o</sub>	---	2.0:1 Δ	1.8:1
Output Power @ 1dB Compression	P-1	dBm	15.0 Δ	16.5
DC Current	I <sub>CC</sub>	mA	---	50

“Δ” T<sub>A</sub> = 24 ± 1°C; “#” f ≥ 500MHz

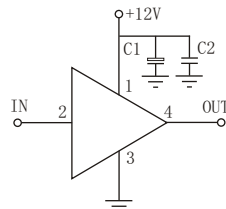
### Maximum Rating

DC Voltage : +13.5V<sub>DC</sub>  
 RF Input: +15dBm  
 Storage Temp: +125°C



### Application Notes

1. Typical application shown as right, C<sub>1</sub> = 10~33 μF; C<sub>2</sub> = 3300~6800pF;
2. See assembly section for mounting information
3. Connectorized package(SMA-1) available
4. ESD observe handling precautions



### Typical Curves

