

## Commander Class

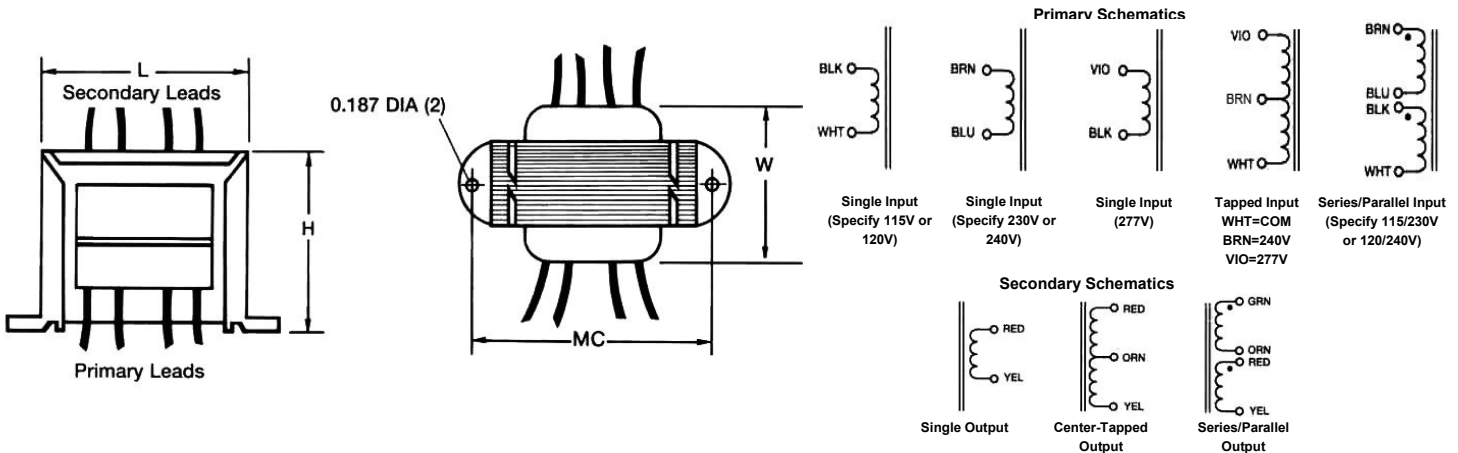
- Flame Retardant, UL 94V0 Rating
- High Efficiency
- 2.4VA to 100VA Power Rating
- Single or Dual Primary, 115V, 115/230V or 230V (Optional 120, 120/240, 240, 277, or 240/277V)
- 50/60Hz (Economy 60Hz-only Models Available)
- Center-tapped Secondary (Optional Single or Dual)
- Any Secondary Voltage from 5V to 120V in 1V Increments
- Insulation Material 130°C Standard (Optional 200°C)
- Optional Internal Current or Thermal Protector
- High Isolation, 2500 Vrms, 100% Tested
- Low Capacitive Coupling, no Electrostatic Shield Needed
- Color Coded Hook-up Wires

Flame Retardant Material



### Agency Approvals:

- UL/cUL 5085-2 Recognized (File E47299)
- UL 1446 Recognized Insulation system (File E95662)
- UL/cUL 5085-3 Class 2 Recognized (File E43609), Only L002 (up to 24V)



VA Rating		Secondary	Dimensions (Inches)			
			L	W	H	MC
L002	2.4VA	Parallel from 5V to 60V	1.45	1.40	1.19	1.75
L006	6VA		1.70	1.50	1.38	2.00
L012	12VA		1.95	1.64	1.62	2.38
L020	20VA		2.32	1.60	1.94	2.81
L030	30VA		2.32	2.00	1.94	2.81
L040	40VA		2.70	1.95	2.25	3.12
L050	50VA		2.70	2.13	2.25	3.12
L056	56VA		2.70	2.13	2.25	3.12
L075	75VA		3.08	2.25	2.56	3.56
L100	100VA		3.08	2.50	2.56	3.56
		Series, single & center-tapped from 10V to 120V				

Take advantage of these pre-designed models, or let us customize to your requirements. That's our specialty.

## Commander Class



### Partial Selection Guide (Standard Stock)

Part Number				Part Number			
115V Primary	115/230V Primary	230V Primary	Secondary	115V Primary	115/230V Primary	230V Primary	Secondary
L002-1-510X*	L002-2-510X*	L002-3-510X*	10VCT @ 250mA	L002-1-520X*	L002-2-520X*	L002-3-520X*	20VCT @ 120mA
L006-1-510X	L006-2-510X	L006-3-510X	10VCT @ 600mA	L006-1-520X	L006-2-520X	L006-3-520X	20VCT @ 300mA
L012-1-510X	L012-2-510X	L012-3-510X	10VCT @ 1.2A	L012-1-520X	L012-2-520X	L012-3-520X	20VCT @ 600mA
L020-1-510X	L020-2-510X	L020-3-510X	10VCT @ 2.0A	L020-1-520X	L020-2-520X	L020-3-520X	20VCT @ 1.0A
L030-1-510X	L030-2-510X	L030-3-510X	10VCT @ 3.0A	L030-1-520X	L030-2-520X	L030-3-520X	20VCT @ 1.50A
L040-1-510X	L040-2-510X	L040-3-510X	10VCT @ 4.0A	L040-1-520X	L040-2-520X	L040-3-520X	20VCT @ 2.0A
L050-1-510X	L050-2-510X	L050-3-510X	10VCT @ 5.0A	L050-1-520X	L050-2-520X	L050-3-520X	20VCT @ 2.5A
L056-1-510X	L056-2-510X	L056-3-510X	10VCT @ 5.6A	L056-1-520X	L056-2-520X	L056-3-520X	20VCT @ 2.8A
L075-1-510X	L075-2-510X	L075-3-510X	10VCT @ 7.5A	L075-1-520X	L075-2-520X	L075-3-520X	20VCT @ 3.8A
L100-1-510X	L100-2-510X	L100-3-510X	10VCT @ 10A	L100-1-520X	L100-2-520X	L100-3-520X	20VCT @ 5.0A
L002-1-512X*	L002-2-512X*	L002-3-512X*	12.6VCT @ 200mA	L002-1-524X*	L002-2-524X*	L002-3-524X*	24VCT @ 100mA
L006-1-512X	L006-2-512X	L006-3-512X	12.6VCT @ 500mA	L006-1-524X	L006-2-524X	L006-3-524X	24VCT @ 250mA
L012-1-512X	L012-2-512X	L012-3-512X	12.6VCT @ 1.0A	L012-1-524X	L012-2-524X	L012-3-524X	24VCT @ 500mA
L020-1-512X	L020-2-512X	L020-3-512X	12.6VCT @ 1.6A	L020-1-524X	L020-2-524X	L020-3-524X	24VCT @ 800mA
L030-1-512X	L030-2-512X	L030-3-512X	12.6VCT @ 2.5A	L030-1-524X	L030-2-524X	L030-3-524X	24VCT @ 1.25A
L040-1-512X	L040-2-512X	L040-3-512X	12.6VCT @ 3.2A	L040-1-524X	L040-2-524X	L040-3-524X	24VCT @ 1.6A
L050-1-512X	L050-2-512X	L050-3-512X	12.6VCT @ 4.0A	L050-1-524X	L050-2-524X	L050-3-524X	24VCT @ 2.0A
L056-1-512X	L056-2-512X	L056-3-512X	12.6VCT @ 4.4A	L056-1-524X	L056-2-524X	L056-3-524X	24VCT @ 2.3A
L075-1-512X	L075-2-512X	L075-3-512X	12.6VCT @ 6.0A	L075-1-524X	L075-2-524X	L075-3-524X	24VCT @ 3.1A
L100-1-512X	L100-2-512X	L100-3-512X	12.6VCT @ 8.0A	L100-1-524X	L100-2-524X	L100-3-524X	24VCT @ 4.0A
L002-1-516X*	L002-2-516X*	L002-3-516X*	16VCT @ 150mA	L002-1-528X	L002-2-528X	L002-3-528X	28VCT @ 85mA
L006-1-516X	L006-2-516X	L006-3-516X	16VCT @ 400mA	L006-1-528X	L006-2-528X	L006-3-528X	28VCT @ 200mA
L012-1-516X	L012-2-516X	L012-3-516X	16VCT @ 800mA	L012-1-528X	L012-2-528X	L012-3-528X	28VCT @ 420mA
L020-1-516X	L020-2-516X	L020-3-516X	16VCT @ 1.25A	L020-1-528X	L020-2-528X	L020-3-528X	28VCT @ 700mA
L030-1-516X	L030-2-516X	L030-3-516X	16VCT @ 2.0A	L030-1-528X	L030-2-528X	L030-3-528X	28VCT @ 1.0A
L040-1-516X	L040-2-516X	L040-3-516X	16VCT @ 2.5A	L040-1-528X	L040-2-528X	L040-3-528X	28VCT @ 1.4A
L050-1-516X	L050-2-516X	L050-3-516X	16VCT @ 3.2A	L050-1-528X	L050-2-528X	L050-3-528X	28VCT @ 1.8A
L056-1-516X	L056-2-516X	L056-3-516X	16VCT @ 3.5A	L056-1-528X	L056-2-528X	L056-3-528X	28VCT @ 2.0A
L075-1-516X	L075-2-516X	L075-3-516X	16VCT @ 5.0A	L075-1-528X	L075-2-528X	L075-3-528X	28VCT @ 2.7A
L100-1-516X	L100-2-516X	L100-3-516X	16VCT @ 6.25A	L100-1-528X	L100-2-528X	L100-3-528X	28VCT @ 3.6A

Models marked with \* are also UL 5085-3 Class 2 recognized (see Page 22)

**Take advantage of these pre-designed models, or let us customize to your requirements. That's our specialty.**



### Partial Selection Guide (Standard Stock)

Part Number				Part Number			
115V Primary	115/230V Primary	230V Primary	Secondary	115V Primary	115/230V Primary	230V Primary	Secondary
L002-1-536X	L002-2-536X	L002-3-536X	36VCT @ 65mA	L002-1-556X	L002-2-556X	L002-3-556X	56VCT @ 45mA
L006-1-536X	L006-2-536X	L006-3-536X	36VCT @ 170mA	L006-1-556X	L006-2-556X	L006-3-556X	56VCT @ 100mA
L012-1-536X	L012-2-536X	L012-3-536X	36VCT @ 350mA	L012-1-556X	L012-2-556X	L012-3-556X	56VCT @ 220mA
L020-1-536X	L020-2-536X	L020-3-536X	36VCT @ 600mA	L020-1-556X	L020-2-556X	L020-3-556X	56VCT @ 400mA
L030-1-536X	L030-2-536X	L030-3-536X	36VCT @ 850mA	L030-1-556X	L030-2-556X	L030-3-556X	56VCT @ 540mA
L040-1-536X	L040-2-536X	L040-3-536X	36VCT @ 1.0A	L040-1-556X	L040-2-556X	L040-3-556X	56VCT @ 700mA
L050-1-536X	L050-2-536X	L050-3-536X	36VCT @ 1.4A	L050-1-556X	L050-2-556X	L050-3-556X	56VCT @ 900mA
L056-1-536X	L056-2-536X	L056-3-536X	36VCT @ 1.6A	L056-1-556X	L056-2-556X	L056-3-556X	56VCT @ 1.0A
L075-1-536X	L075-2-536X	L075-3-536X	36VCT @ 2.0A	L075-1-556X	L075-2-556X	L075-3-556X	56VCT @ 1.3A
L100-1-536X	L100-2-536X	L100-3-536X	36VCT @ 2.8A	L100-1-556X	L100-2-556X	L100-3-556X	56VCT @ 1.8A
L002-1-548X	L002-2-548X	L002-3-548X	48VCT @ 50mA	L002-1-620X	L002-2-620X	L002-3-620X	120VCT @ 20mA
L006-1-548X	L006-2-548X	L006-3-548X	48VCT @ 125mA	L006-1-620X	L006-2-620X	L006-3-620X	120VCT @ 50mA
L012-1-548X	L012-2-548X	L012-3-548X	48VCT @ 250mA	L012-1-620X	L012-2-620X	L012-3-620X	120VCT @ 100mA
L020-1-548X	L020-2-548X	L020-3-548X	48VCT @ 400mA	L020-1-620X	L020-2-620X	L020-3-620X	120VCT @ 200mA
L030-1-548X	L030-2-548X	L030-3-548X	48VCT @ 630mA	L030-1-620X	L030-2-620X	L030-3-620X	120VCT @ 250mA
L040-1-548X	L040-2-548X	L040-3-548X	48VCT @ 800mA	L040-1-620X	L040-2-620X	L040-3-620X	120VCT @ 300mA
L050-1-548X	L050-2-548X	L050-3-548X	48VCT @ 1.0A	L050-1-620X	L050-2-620X	L050-3-620X	120VCT @ 400mA
L056-1-548X	L056-2-548X	L056-3-548X	48VCT @ 1.2A	L056-1-620X	L056-2-620X	L056-3-620X	120VCT @ 500mA
L075-1-548X	L075-2-548X	L075-3-548X	48VCT @ 1.6A	L075-1-620X	L075-2-620X	L075-3-620X	120VCT @ 600mA
L100-1-548X	L100-2-548X	L100-3-548X	48VCT @ 2.0A	L100-1-620X	L100-2-620X	L100-3-620X	120VCT @ 850mA

**Over 159,000 additional Commander Class model configurations available!**

Refer to the Part Numbering Scheme on the next page to **configure your own part** with following options:

- Primary: 120V, 120/240V, 240V, 277V, or 240/277V
- Secondary: 5V to 120V, in 1V increments
- Frequency: 50/60Hz, or economy 60Hz-only
- With or without current or thermal protector(s)
- Temperature Class: 130°C, or 200°C

**Take advantage of these pre-designed models, or let us customize to your requirements. That's our specialty.**

## Commander Class



**Examples:**

L075-2A724X = 75VA, Dual 115/230V (series/parallel) Primary, 50/60Hz, 130°C thermal cutoff, Single 24V Secondary

Frame Mount with Lead Wires	LXXX	-X	X	XXX	X	XXXX
<p><b>Rating:</b></p> <p>L002 = 2.4VA, models up to 24V are also Class 2 (see Page 22)</p> <p>L006 = 6VA                      L050 = 50VA</p> <p>L012 = 12VA                    L056 = 56VA</p> <p>L020 = 20VA                    L075 = 75VA</p> <p>L030 = 30VA                    L100 = 100VA</p> <p>L040 = 40VA</p>						
<p><b>Primary Voltages:</b></p> <p>-1 = 120</p> <p>-2 = 120/240 Dual (series / parallel)</p> <p>-3 = 240</p> <p>-4 = 277, unavailable on Class 2 models</p> <p>-5 = 240/277 (tapped), unavailable on Class 2 models</p>						
<p><b>Optional Internal Protector:</b></p> <p>- (dash) = No internal protector</p> <p>A through Z = Over-current and/or over-temperature protection (Contact for list of available protectors)</p>						
<p><b>Secondary Voltages (10 through 120, in 1V Increments):</b></p> <p>010 through 120 = Dual Secondary (series / parallel) Number represents the voltage of the series connection. <i>Example: "024" = 12V (parallel) / 24V (series)</i></p> <p>510 through 620 = Center-tapped Secondary Number represents the total voltage plus 500. <i>Example: "524" = 24V with center-tap (12V on each side)</i></p> <p>710 through 820 = Single Secondary Number represents the voltage plus 700. <i>Example: "724" = 24V</i></p>						
<p><b>Indication of Adjustment in Primary Voltage:</b></p> <p>Blank = 120V, 120/240V or 240V, as selected above</p> <p>X = Primary 115V instead of 120 and/or 230V instead of 240V</p>						
<p><b>Frequency:</b></p> <p>Blank = 50/60Hz</p> <p>-60HZ = Economy 60Hz-only</p>						

**Take advantage of these pre-designed models, or let us customize to your requirements. That's our specialty.**