

**.100" CENTER-TO-CENTER**  
**.150" ROW-TO-ROW**  
**LOW PROFILE CARDEDGE**  
**.265" CARD SLOT DEPTH**



**PHYSICAL PROPERTIES**

**INSULATION RESISTANCE:** 5000 megohms minimum.  
**INSERTION/WITHDRAWAL FORCE (DAUGHTER CARD):**  
8 oz./2oz. average contact pair using .0620 steel blade.

**INSULATOR BODY:** High temp. glass filled thermoplastic, UL rating 94V-O.

**COLOR:** Black

**CONTACTS:** High strength copper alloy.

**CONTACT PLATING:** 50 microinches nickel underplate with 30 microinches gold in the mating area, tin/lead on tails, 100 microinches minimum

**ELECTRICAL PROPERTIES**

**OPERATION VOLTAGE:** 600 VDC (sea level)

**CURRENT RATING:** 3 Amperes

**INITIAL CONTACT RESISTANCE:** 10 milliohms

**ENVIRONMENTAL PROPERTIES**

**OPERATING TEMPERATURE:** -55°C to +125°C

**TEMPERATURE CYCLING:** MIL-STD-202 method 107

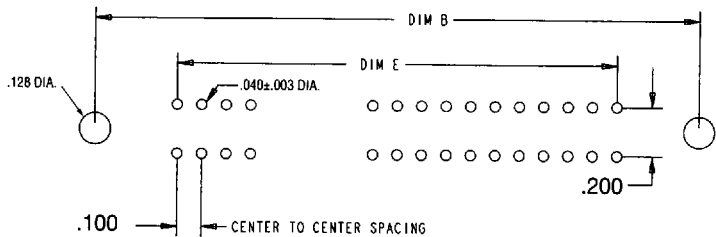
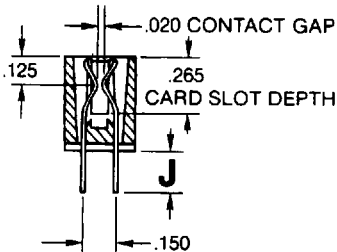
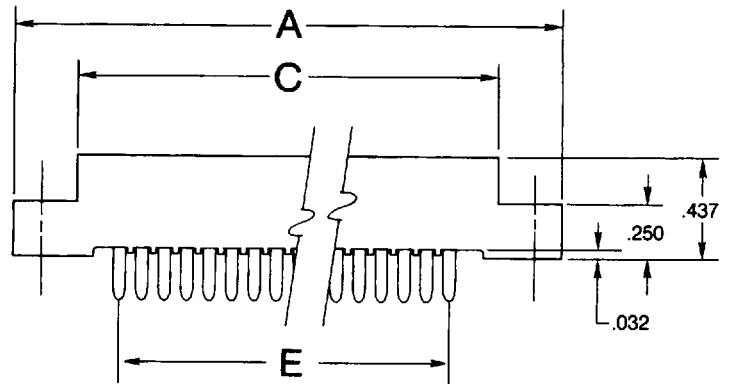
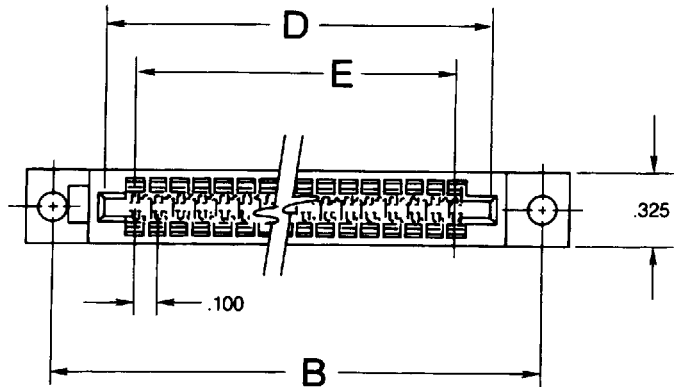
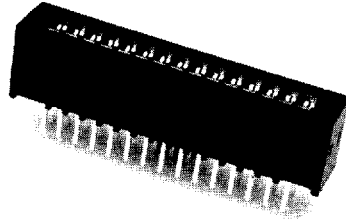
**VIBRATION:** MIL-STD-202 method 204

**ACCESSORIES**

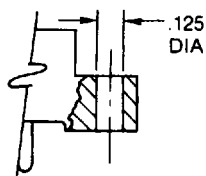
**POLARIZATION KEY:** Cat. # 98014-00, see page 372

**DAUGHTER CARD**

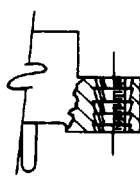
See page 373 for layout



**Mounting Styles**



Flush Mounting Ears  
.125" Thru Hole



Flush Mounting Ears  
4-40 Threaded Thru Hole



No Mounting Ears

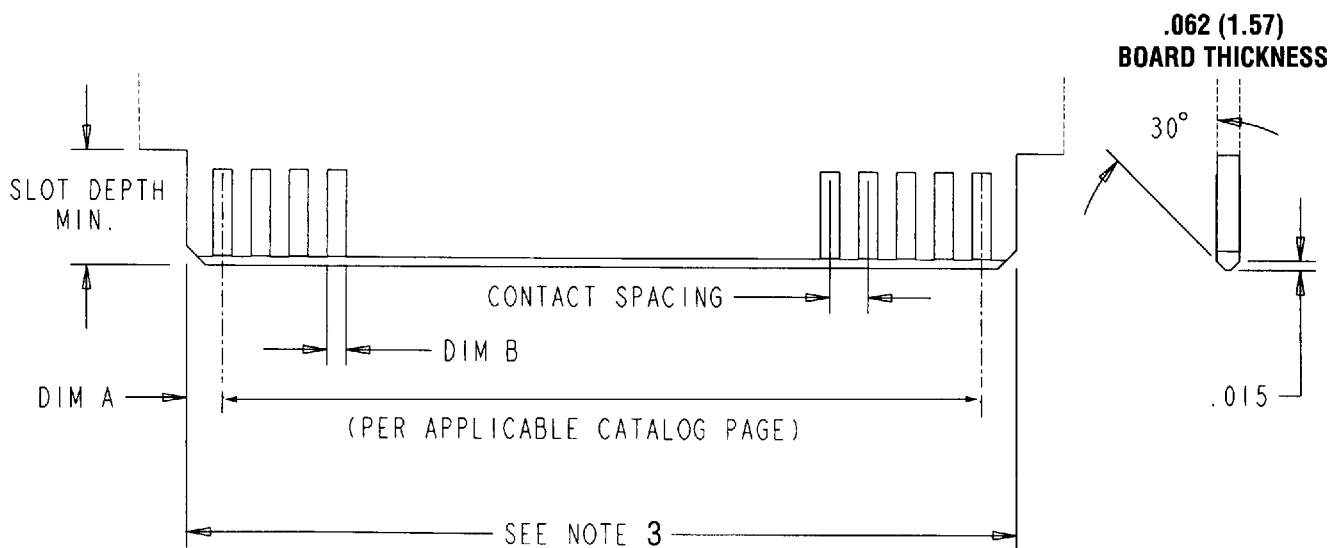
## ORDERING INFORMATION -

.100" CENTER-TO-CENTER / .150" ROW-TO-ROW

# OF DUAL READOUT POS.	MOUNTING OPTIONS			DIMENSIONS				
	FLUSH MOUNTING EARS .125" THRU HOLE	FLUSH MOUNTING EARS 4-40 THREADED INSERT	NO MOUNTING EARS	A	B	C	D	E
<b>TAIL LENGTH .202 (DIM "J")</b>								
6	C5D06DS29A1	C5D06DS29B1	C5D06DS29C1	1.475	1.175	0.868	0.707	0.500
10	C5D10DS29A1	C5D10DS29B1	C5D10DS29C1	1.875	1.575	1.268	1.107	0.900
12	C5D12DS29A1	C5D12DS29B1	C5D12DS29C1	2.075	1.775	1.468	1.307	1.100
15	C5D15DS29A1	C5D15DS29B1	C5D15DS29C1	2.375	2.075	1.768	1.607	1.400
18	C5D18DS29A1	C5D18DS29B1	C5D18DS29C1	2.675	2.375	2.068	1.907	1.700
20	C5D20DS29A1	C5D20DS29B1	C5D20DS29C1	2.875	2.575	2.268	2.107	1.900
22	C5D22DS29A1	C5D22DS29B1	C5D22DS29C1	3.075	2.775	2.468	2.307	2.100
25	C5D25DS29A1	C5D25DS29B1	C5D25DS29C1	3.375	3.075	2.768	2.607	2.400
28	C5D28DS29A1	C5D28DS29B1	C5D28DS29C1	3.675	3.375	3.068	2.907	2.700
30	C5D30DS29A1	C5D30DS29B1	C5D30DS29C1	3.875	3.575	3.268	3.107	2.900
31	C5D31DS29A1	C5D31DS29B1	C5D31DS29C1	3.975	3.675	3.368	3.207	3.000
35	C5D35DS29A1	C5D35DS29B1	C5D35DS29C1	4.375	4.075	3.768	3.607	3.400
36	C5D36DS29A1	C5D36DS29B1	C5D36DS29C1	4.475	4.175	3.868	3.707	3.500
40	C5D40DS29A1	C5D40DS29B1	C5D40DS29C1	4.875	4.575	4.268	4.107	3.900
43	C5D43DS29A1	C5D43DS29B1	C5D43DS29C1	5.175	4.875	4.568	4.407	4.200
44	C5D44DS29A1	C5D44DS29B1	C5D44DS29C1	5.275	4.975	4.668	4.507	4.300
50	C5D50DS29A1	C5D50DS29B1	C5D50DS29C1	5.875	5.575	5.268	5.107	4.900
<b>TAIL LENGTH .220 (DIM "J")</b>								
6	C5D06DS29A2	C5D06DS29B2	C5D06DS29C2	1.475	1.175	0.868	0.707	0.500
10	C5D10DS29A2	C5D10DS29B2	C5D10DS29C2	1.875	1.575	1.268	1.107	0.900
12	C5D12DS29A2	C5D12DS29B2	C5D12DS29C2	2.075	1.775	1.468	1.307	1.100
15	C5D15DS29A2	C5D15DS29B2	C5D15DS29C2	2.375	2.075	1.768	1.607	1.400
18	C5D18DS29A2	C5D18DS29B2	C5D18DS29C2	2.675	2.375	2.068	1.907	1.700
20	C5D20DS29A2	C5D20DS29B2	C5D20DS29C2	2.875	2.575	2.268	2.107	1.900
22	C5D22DS29A2	C5D22DS29B2	C5D22DS29C2	3.075	2.775	2.468	2.307	2.100
25	C5D25DS29A2	C5D25DS29B2	C5D25DS29C2	3.375	3.075	2.768	2.607	2.400
28	C5D28DS29A2	C5D28DS29B2	C5D28DS29C2	3.675	3.375	3.068	2.907	2.700
30	C5D30DS29A2	C5D30DS29B2	C5D30DS29C2	3.875	3.575	3.268	3.107	2.900
31	C5D31DS29A2	C5D31DS29B2	C5D31DS29C2	3.975	3.675	3.368	3.207	3.000
35	C5D35DS29A2	C5D35DS29B2	C5D35DS29C2	4.375	4.075	3.768	3.607	3.400
36	C5D36DS29A2	C5D36DS29B2	C5D36DS29C2	4.475	4.175	3.868	3.707	3.500
40	C5D40DS29A2	C5D40DS29B2	C5D40DS29C2	4.875	4.575	4.268	4.107	3.900
43	C5D43DS29A2	C5D43DS29B2	C5D43DS29C2	5.175	4.875	4.568	4.407	4.200
44	C5D44DS29A2	C5D44DS29B2	C5D44DS29C2	5.275	4.975	4.668	4.507	4.300
50	C5D50DS29A2	C5D50DS29B2	C5D50DS29C2	5.875	5.575	5.268	5.107	4.900
<b>TAIL LENGTH .150 (DIM "J")</b>								
6	C5D06DS29A3	C5D06DS29B3	C5D06DS29C3	1.475	1.175	0.868	0.707	0.500
10	C5D10DS29A3	C5D10DS29B3	C5D10DS29C3	1.875	1.575	1.268	1.107	0.900
12	C5D12DS29A3	C5D12DS29B3	C5D12DS29C3	2.075	1.775	1.468	1.307	1.100
15	C5D15DS29A3	C5D15DS29B3	C5D15DS29C3	2.375	2.075	1.768	1.607	1.400
18	C5D18DS29A3	C5D18DS29B3	C5D18DS29C3	2.675	2.375	2.068	1.907	1.700
20	C5D20DS29A3	C5D20DS29B3	C5D20DS29C3	2.875	2.575	2.268	2.107	1.900
22	C5D22DS29A3	C5D22DS29B3	C5D22DS29C3	3.075	2.775	2.468	2.307	2.100
25	C5D25DS29A3	C5D25DS29B3	C5D25DS29C3	3.375	3.075	2.768	2.607	2.400
28	C5D28DS29A3	C5D28DS29B3	C5D28DS29C3	3.675	3.375	3.068	2.907	2.700
30	C5D30DS29A3	C5D30DS29B3	C5D30DS29C3	3.875	3.575	3.268	3.107	2.900
31	C5D31DS29A3	C5D31DS29B3	C5D31DS29C3	3.975	3.675	3.368	3.207	3.000
35	C5D35DS29A3	C5D35DS29B3	C5D35DS29C3	4.375	4.075	3.768	3.607	3.400
36	C5D36DS29A3	C5D36DS29B3	C5D36DS29C3	4.475	4.175	3.868	3.707	3.500
40	C5D40DS29A3	C5D40DS29B3	C5D40DS29C3	4.875	4.575	4.268	4.107	3.900
43	C5D43DS29A3	C5D43DS29B3	C5D43DS29C3	5.175	4.875	4.568	4.407	4.200
44	C5D44DS29A3	C5D44DS29B3	C5D44DS29C3	5.275	4.975	4.668	4.507	4.300
50	C5D50DS29A3	C5D50DS29B3	C5D50DS29C3	5.875	5.575	5.268	5.107	4.900

# CARDEDGE CONNECTORS RECOMMENDED DAUGHTER CARD LAYOUT

PER MIL-C-21097E



**Daughter Card**

CONTACT SPACING NON-ACCUM.	DIM A ±.005 (.13)	DIM B
.100 (2.54)	.093 (2.36)	.052 (1.32)
.125 (3.18)	.093 (2.36)	.052 (1.32)
.156 (3.96)	.105* (2.67)	.094 (2.39)

\* Except MIL-C-21097E 8-4 which is .070 (1.78)

**NOTES:**

1. Dimensions are in inches
2. Unless otherwise specified, tolerance is ±.005 (0.13 mm) for three place decimals.
3. Number of contact fingers shall be the same as the corresponding printed wiring connector.