

**PLEASE CHECK WWW.MOLEX.COM FOR LATEST PART INFORMATION**

**Part Number:** [0193190004](#)  
**Status:** **Active**  
**Overview:** [versakrimp terminals and splices](#)  
**Description:** Butt Splices VersaKrimp™ 500-600MCM

**Documents:**

[Drawing \(PDF\)](#) [RoHS Certificate of Compliance \(PDF\)](#)

**General**

Product Family	Splices
Series	<a href="#">19319</a>
Crimp Quality Equipment	Yes
Mil-Spec	N/A
Overview	<a href="#">versakrimp terminals and splices</a>
Product Name	VersaKrimp™

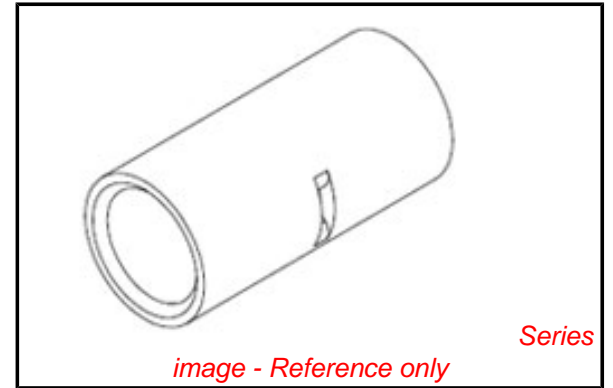
**Physical**

Barrel Type	Open
Insulation	None
Material - Metal	Copper
Material - Plating Mating	Nickel
Packaging Type	Bag
Wire Size AWG	500MCM, 550MCM, 600MCM

**Material Info**

**Reference - Drawing Numbers**

Sales Drawing	SD-19319-001
---------------	--------------



**EU RoHS**

**ELV and RoHS  
Compliant**  
**REACH SVHC  
Not Reviewed**  
**Halogen-Free  
Status  
Not Reviewed**

**China RoHS**

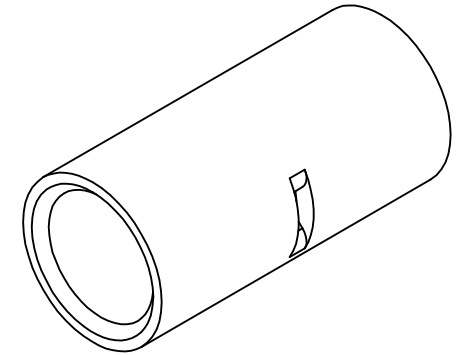
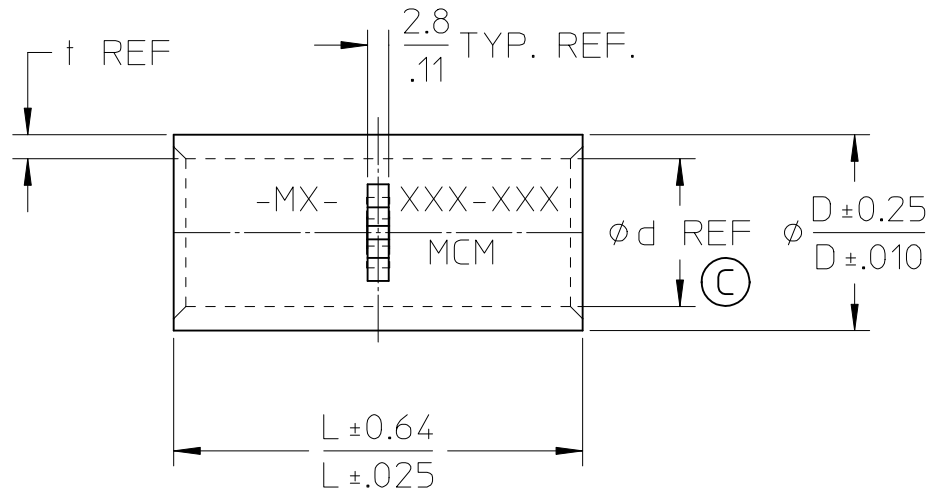
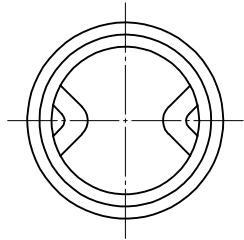


**Need more information on product  
environmental compliance?**

Email [productcompliance@molex.com](mailto:productcompliance@molex.com)  
 For a multiple part number RoHS Certificate of Compliance, [click here](#)

Please visit the [Contact Us](#) section for any non-product compliance questions.

**Search Parts in this Series**  
[19319Series](#)



MATERIAL NO.	WIRE RANGE		L	D $\phi$	d $\phi$	t
	MCM	mm <sup>2</sup>				
193190004	500-600	242.3 - 325	72.0 2.83	37.0 1.46	28.0 1.10	4.5 0.18
193190003	350-450	192.6 - 242.3	63.0 2.48	32.0 1.26	24.0 0.94	4.0 0.16
193190002	300-350	152 - 192.6	57.0 2.24	28.0 1.10	21.0 0.83	3.5 0.14
193190001	250-300	117.2 - 152	54.0 2.13	25.9 1.02	19.5 0.77	3.2 0.13

NOTES:

- MATERIAL:  
TIN PLATED COPPER
- TERMINALS MARKED  
AS SHOWN W/  
CORRESPONDING WIRE  
SIZE

<b>ENTER DESCRIPTION</b> EC NO: WNAZ009-0806 DRWN: MOELLER 2009/06/05 CHKD: 2009/06/08 APPR: RDEROSS 2009/06/08 REV DESCRIPTION	QUALITY SYMBOLS	GENERAL TOLERANCES (UNLESS SPECIFIED)	DIMENSION STYLE	SCALE	DESIGN UNITS	THIRD ANGLE PROJECTION															
	$\blacktriangledown = 0$ $\nabla = 0$	<table border="1"> <thead> <tr> <th></th> <th>mm</th> <th>INCH</th> </tr> </thead> <tbody> <tr> <td>4 PLACES</td> <td>± ---</td> <td>± ---</td> </tr> <tr> <td>3 PLACES</td> <td>± ---</td> <td>± ---</td> </tr> <tr> <td>2 PLACES</td> <td>± ---</td> <td>± ---</td> </tr> <tr> <td>1 PLACE</td> <td>± ---</td> <td>± ---</td> </tr> </tbody> </table>		mm	INCH	4 PLACES	± ---	± ---	3 PLACES	± ---	± ---	2 PLACES	± ---	± ---	1 PLACE	± ---	± ---	MM/IN	1:1	METRIC	
		mm	INCH																		
	4 PLACES	± ---	± ---																		
	3 PLACES	± ---	± ---																		
2 PLACES	± ---	± ---																			
1 PLACE	± ---	± ---																			
	ANGULAR $\pm 1/2^\circ$	<table border="1"> <thead> <tr> <th>DRAWN BY</th> <th>DATE</th> </tr> </thead> <tbody> <tr> <td>T. MOELLER</td> <td>2009/02/04</td> </tr> <tr> <th>CHECKED BY</th> <th>DATE</th> </tr> <tr> <td>T. MOELLER</td> <td>2009/02/04</td> </tr> <tr> <th>APPROVED BY</th> <th>DATE</th> </tr> <tr> <td>R. DEROSS</td> <td>2009/02/04</td> </tr> </tbody> </table>	DRAWN BY	DATE	T. MOELLER	2009/02/04	CHECKED BY	DATE	T. MOELLER	2009/02/04	APPROVED BY	DATE	R. DEROSS	2009/02/04	TITLE <b>BRAZED SEAM BUTT CONNECTORS (250-600 MCM)</b>						
DRAWN BY	DATE																				
T. MOELLER	2009/02/04																				
CHECKED BY	DATE																				
T. MOELLER	2009/02/04																				
APPROVED BY	DATE																				
R. DEROSS	2009/02/04																				
	DRAFT WHERE APPLICABLE MUST REMAIN WITHIN DIMENSIONS	MATERIAL NO.	<b>MOLEX INCORPORATED</b>		DOCUMENT NO.	SHEET NO.															
		SEE CHART	SD-19319-001		1 OF 1																