

Features

- Frequency Range: 20~500MHz
- Standard Hermetic Package
- Operating Temperature Range: -55°C ~ +85°C

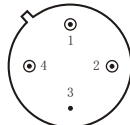
Specifications (50 Ω, V_{CC} = +5V, T_A = -55°C ~ +85°C)

| Parameter | Symbol | Unit | Guaranteed | Typical |
|--------------------------------|--------------------------------|------|------------|---------|
| Frequency Range | f _L ~f _H | MHz | 20~500 | 20~500 |
| Gain | G _p | dB | ≥10.0 | 10.5 |
| Gain Flatness | ΔG _p | dB | ≤1.0 | 0.5 |
| Noise Figure | F _n | dB | ≤2.5 Δ | 2.0 |
| Input VSWR | VSWR _i | — | ≤2.0:1 Δ | 1.5:1 |
| Output VSWR | VSWR _o | — | ≤2.0:1 Δ | 1.8:1 |
| Output Power @ 1dB Compression | P ₋₁ | dBm | ≥13.0 * Δ | — |
| DC Current | I _{CC} | mA | — | 30 |

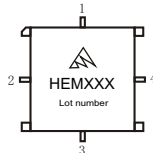
* * * f = 400MHz; “Δ” T_A = 24 ± 1°C;

Maximum Rating

DC Voltage : +8VDC
RF Input: +10dBm
Storage Temperature: +125°C



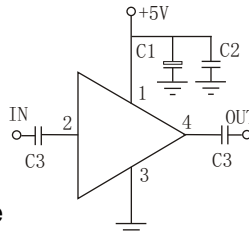
TO-8C



SMO-8C

Application Notes

1. Typical application shown as right, C₁ = 3.3~22 μF ; C₂ = 3300~6800pF; C₃ = 1000pF;
2. See assembly section for mounting information
3. Connectorized package(SMA-1) available



Typical Curves

