

TABLE OF DIMENSIONS						
CATALOG NUMBER	NUMBER OF POSITIONS	A	B	C ±.004 [0,.10]	D	G
RPIG72U30P_-16	72	2.936 74,57	2.700 68,58	2.558 64,97	2.300 58,42	2.770 70,36
RPIG96U30P_-16	96	3.736 94,89	3.500 88,90	3.358 85,29	3.100 78,74	3.369 90,65
RPIG120U30P_-16	120	4.536 115,21	4.300 109,22	4.158 105,61	3.900 99,06	4.369 110,97
RPIG150U30P_-16	150	5.536 140,61	5.300 134,62	5.158 131,01	4.900 124,46	5.369 136,37

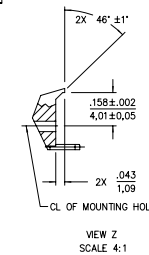
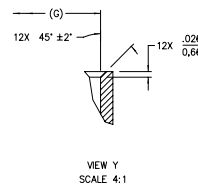
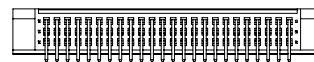
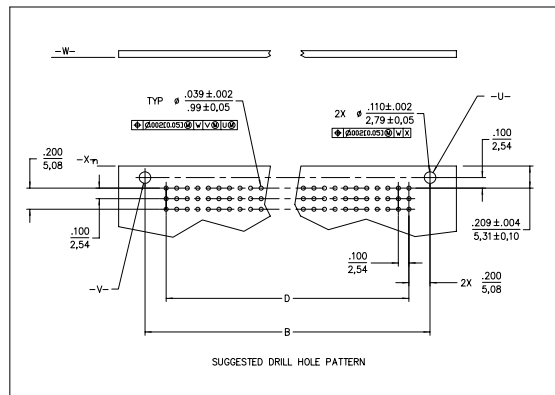
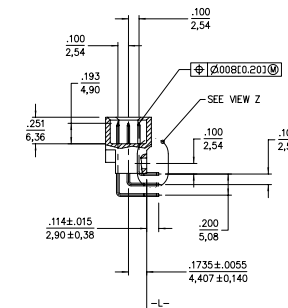
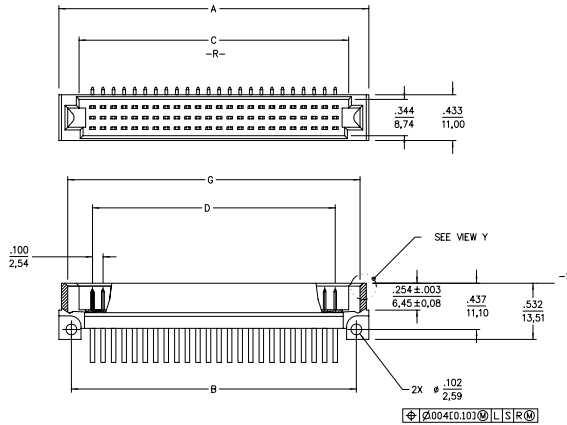
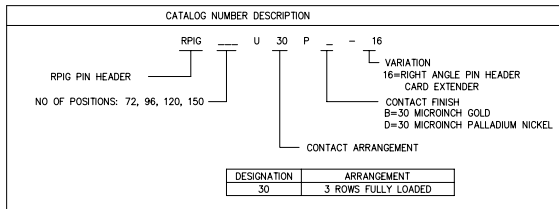
NOTES: UNLESS OTHERWISE SPECIFIED,

MATERIAL:

BODY - GLASS REINFORCED POLYESTER UL94V-0, COLOR - BLACK  
CONTACTS - COPPER ALLOY

CONTACT FINISH: B= 30 MICRONS [0,762 MICRONS] MIN GOLD IN CONTACT AREA  
200 MICRONS [5,08 MICRONS] MIN TIN/LEAD ALLOY ON CONTACT TAILS  
50 MICRONS [1,27 MICRONS] MIN NICKEL UNDERPLATE ALL OVER

D= 5 MICRONS [.13 MICRONS] MIN GOLD OVER 30 MICRONS  
[0,76 MICRONS] MIN PALLADIUM NICKEL IN CONTACT AREA AND  
100 MICRONS [2,54 MICRONS] MIN TIN/LEAD ALLOY ON CONTACT TAILS  
AND 50 MICRONS [1,27 MICRONS] MIN NICKEL UNDERPLATE ALL OVER.

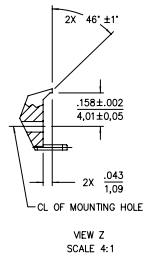
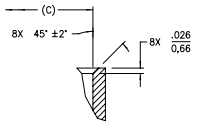
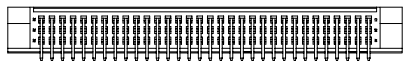
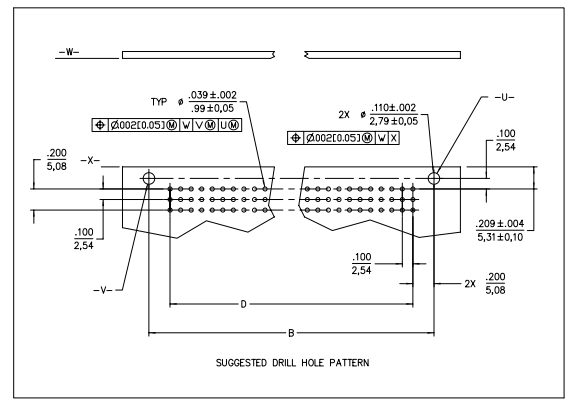
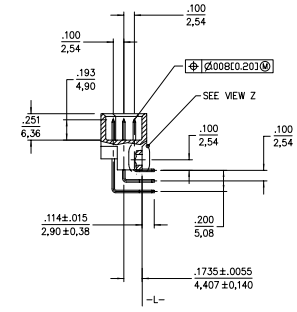
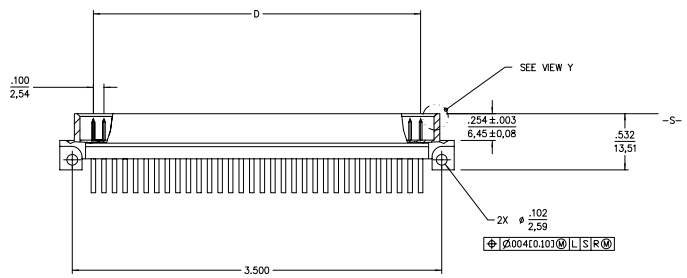
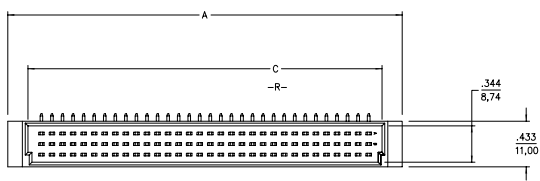


REFERENCE:  
SE93320, RPIG72U30RB-10

SUPERSEDED SE93315 SHT. 5  
BY SE95579 SHT. 1  
SUPERSEDES: SKME26080-2

mat'l. code		surface ISO 1302 ✓	tolerance ISO 406 ISO 1101	projection	product family
					DIN
ltr	ecn no dr	date	tolerances unless otherwise specified		title
4	ECN1243	PJT	9/16/89	angles .XX±.01/.3	RIGHT ANGLE PIN HEADER
5	ECN1605	KAM	9/9/31	linear .XXX±.005/.13	CARD EXTENDER CONNECTOR
6	DC11779	JJO	1/31/92	0°±2'	scale 2:1
7	ECN2041	DLB	8/21/92	dr BC 6/12/87	dwg no sheet 1 of 3 size
8	ECN3176	DHR	1/03/95	enr PJB 6/19/87	SE93315 A3
K	V20210	TAB	1/28/02	chr PZ 7/28/87	type Product Customer Drawing
L	M06-0330	AGS	8/28/06	appd MSM 7/28/87	
sheet	revision	L	L	L	
index	sheet	1	2	3	

NOTES: UNLESS OTHERWISE SPECIFIED,  
 MATERIAL:  
 BODY - GLASS REINFORCED POLYESTER UL94V-0, COLOR - BLACK  
 CONTACTS - COPPER ALLOY  
 CONTACT FINISH: 30 MICRONS [0,762 MICRONS] MIN GOLD IN CONTACT AREA  
 200 MICRONS [5,08 MICRONS] MIN TIN/LEAD ALLOY ON CONTACT TAILS  
 50 MICRONS [1,27 MICRONS] MIN NICKEL UNDERPLATE ALL OVER



REFERENCE:  
 SE88684, RPI\_U30R\_--

CAT. NO. SHOWN: RPI96U30PB-16

mat'l. code		surface ISO 1302 ✓		tolerance ISO 406 ISO 1101		projection INCH/MM		product family DIN	
ltr		ecn no dr		date		tolerances unless otherwise specified		title	
L						.XX ± .01 / .3		RIGHT ANGLE PIN HEADER	
						.XXX ± .005 / .13		CARD EXTENDER CONNECTOR	
						.XXXX ± .0020 / .051		scale 2:1	
						0° ± 2'		dwg no sheet2 of 3 size	
						dr BC 6/12/87		SE93315 A3	
						enr PJB 6/19/87		type Product Customer Drawing	
						chr PZ 7/28/87			
						appd MSM 7/28/87			
sheet index		revision sheet							

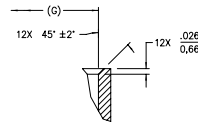
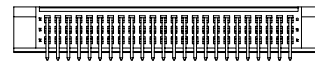
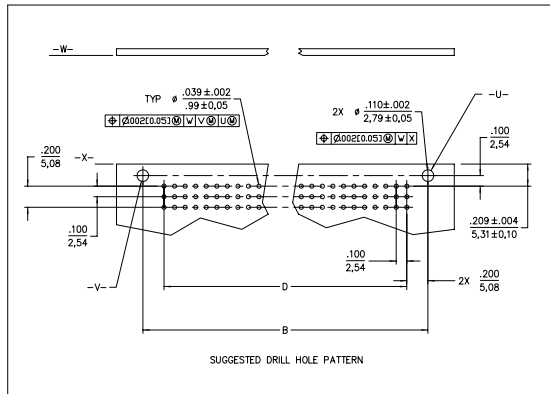
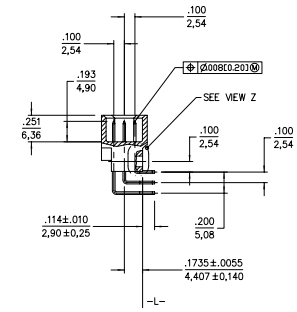
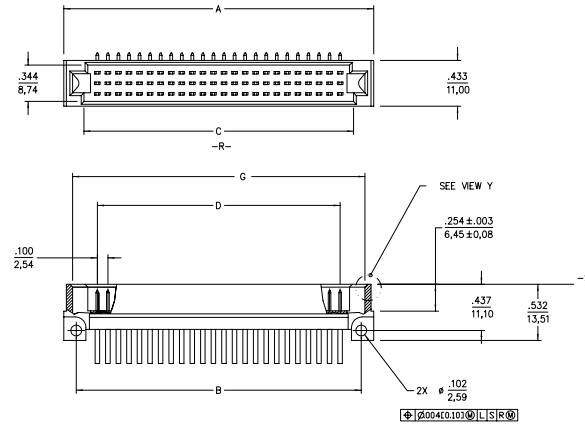
TABLE OF DIMENSIONS						
CATALOG NUMBER	NUMBER OF POSITIONS	A	B	C ±.004 [2,54]	D	G
RPIG72U3QPB-11	72	2,936 74,57	2,700 68,58	2,558 64,97	2,300 58,42	2,770 70,36
RPIG96U3QPB-11	96	3,736 94,57	3,500 88,90	3,358 85,29	3,100 78,74	3,369 90,65

NOTES: UNLESS OTHERWISE SPECIFIED,

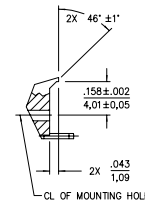
MATERIAL:

BODY - GLASS REINFORCED POLYESTER UL94V-0, COLOR - BLACK  
CONTACTS - COPPER ALLOY

CONTACTS FINISH: 30 MICRONCHES [0,762 MICRONS] MIN GOLD IN CONTACT AREA  
200 MICRONCHES [5,08 MICRONS] MIN TIN/LEAD ALLOY ON CONTACT TAILS  
50 MICRONCHES [1,27 MICRONS] MIN NICKEL UNDERPLATE ALL OVER



VIEW Y  
SCALE 4:1



VIEW Z  
SCALE 4:1

REFERENCE:  
SE93320, RPIG72U3QRB-10

mat'l. code		surface ISO 1302 ✓		tolerance ISO 406 ISO 1101		projection INCH/MM		product family DIN	
ltr		ecn no dr		date		tolerances unless otherwise specified		title	
L						.XX±.01/.3		RIGHT ANGLE PIN HEADER	
						.XXX±.005/.13		CARD EXTENDER CONNECTOR	
				0°±2'		.XXXX±.0020/.051		scale 2:1	
		dr		BC		6/12/87		dwg no	
		enr		PJB		6/19/87		sheet 3 of 3 size	
		chr		PZ		7/28/87		SE93315 A3	
		appd		MSM		7/28/87		type Product Customer Drawing	
sheet index		revision sheet							