

CFPS-65

ISSUE 3; 19 OCTOBER 2004

Delivery Options

- Please contact our sales office for current leadtimes

Output Compatibility / Load

- CMOS, 15pF max

Package Outline

- 6.5 x 4.0 SMD Ceramic Based, Metal Lid

Standard Frequency

- 32.768kHz

Frequency Stabilities

- Over Operating Temperature Range -10 to 60°C
Typically +30 to -60ppm
- Over Operating Temperature Range -40 to 85°C
Typically +30 to -150ppm

Storage Temperature Range

- -40 to 85°C

Tri-state Operation

- Logic '0' to pad 1 disables oscillator output, when disabled the oscillator output goes to the high impedance state
- No Connection or Logic '1' to pad 1 enables oscillator

Start up Time

- 500ms max

Disable Delay Time

- 150ns max

Enable Delay Time

- 500ms max

Solder Conditions

- For typical soldering conditions, please see the relevant pages in Applications Notes

Ageing

- ±5ppm max @ 25°C ±3°C for first year

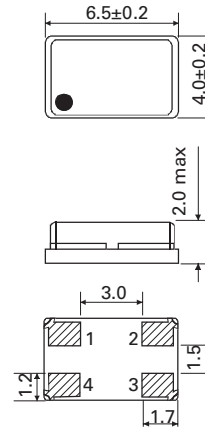
Marking

- Frequency
- Date Code (Year-Week)

Minimum Order Information Required

- Frequency + Model Number

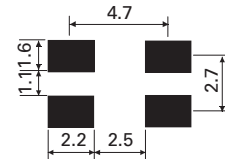
Outline in mm



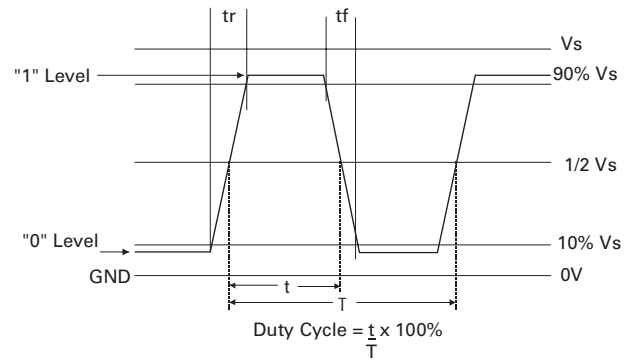
Pad Connections

1. Enable/Disable
2. GND
3. Output
4. +Vs

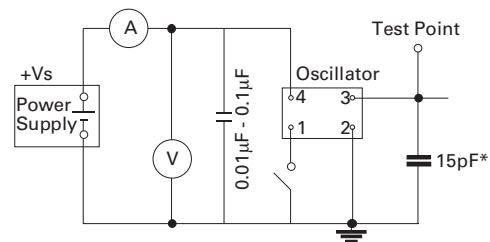
Solder pad layout



Output Waveform



Test Circuit

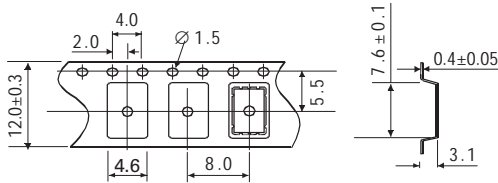


*Inclusive of jiggling and equipment capacitance

Electrical Specification - maximum limiting values when measured in CMOS test circuit

Frequency Range	Supply Voltage	Supply Current	Rise Time(tr)	Fall Time (tf)	Duty Cycle	Model Number
32.768kHz	3.3V±0.3V	5µA	200ns	200ns	45/55%	CFPS-65

Outline in mm - Tape



Reel Dimensions

- Reel Diameter: 330mm

SURFACE MOUNT
SPX08