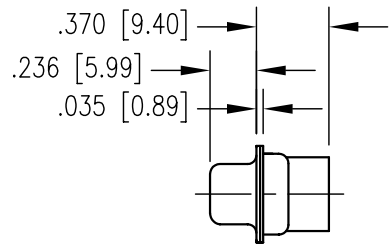
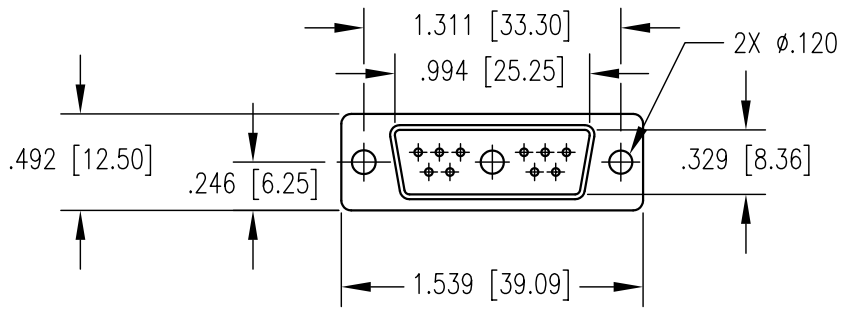
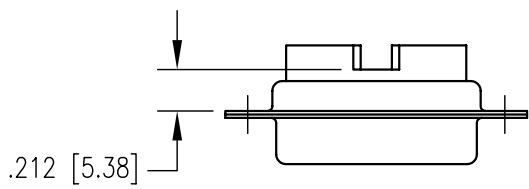


REV	DESCRIPTION	BY DATE	APPD
D	REVISED PER ECR8787	JCP 12/04/06	JCP



CATALOG No. RP11W1P-10-ZB

NOTES:

- MATERIALS:
SHELL: STEEL PER ASTM B568
INSULATOR: GLASS FILLED POLYESTER-BLACK
SIGNAL CONTACTS: NOT SUPPLIED WITH HOUSING. ORDER SEPARATE.
- FINISH:
SHELL: YELLOW CHROMATE OVER ZINC PER ASTM B633

PER ASME Y14.5M-1994 UNLESS OTHERWISE SPECIFIED: DIMENSIONS ARE IN INCHES [MM] TOLERANCES: DECIMALS .XX ± .01 [0.254] .XXX ± .005 [0.127] ANGLES ± 2° SCALE: 1:1		NORTHROP GRUMMAN Winchester Electronics 62 Barnes Industrial Road North Wallingford, CT 06492	
CUSTOMER DRAWING		TITLE DM HOUSING-11W1P	
DRAWN JEM	DATE 1/5/04	CHECKED	DATE
APPROVED	DATE	APPROVED	DATE
A		SDRP11W1P-10-ZB	SHT. 1 OF 1 REV. D