

Coaxial Directional Coupler

50Ω 15dB 800 to 2000 MHz

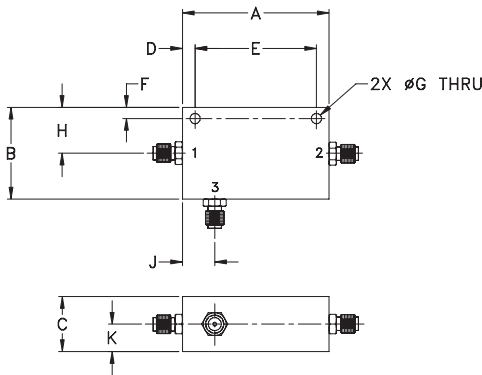
Maximum Ratings

Operating Temperature	-55°C to 100°C
Storage Temperature	-55°C to 100°C
Power input	3W Max.

Coaxial Connections

INPUT	1
OUTPUT	2
COUPLED	3

Outline Drawing



Outline Dimensions (inch/mm)

A	B	C	D	E	F	G	H	J	K	wt grams
2.00	1.25	0.75	0.17	1.656	0.15	0.14	0.63	0.44	0.38	57.0
50.80	31.75	19.05	4.32	42.06	3.81	3.56	16.00	11.18	9.65	

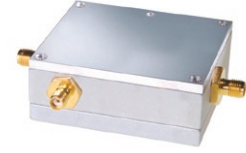
Features

- excellent mainline loss, 0.7 dB typ.
- very flat coupling ± 0.2 dB typ.

Applications

- cellular
- PCS
- ISM

ZNDC-15-2G+ ZNDC-15-2G



CASE STYLE: FM587

Connectors	Model	Price	Qty.
SMA	ZNDC-15-2G-S(+)	\$49.95	(1-9)

+ RoHS compliant in accordance with EU Directive (2002/95/EC)

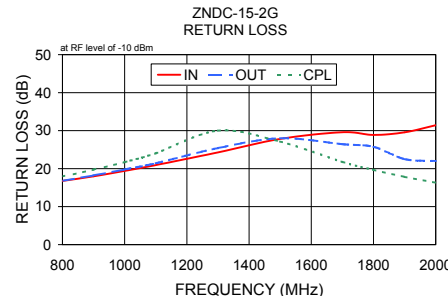
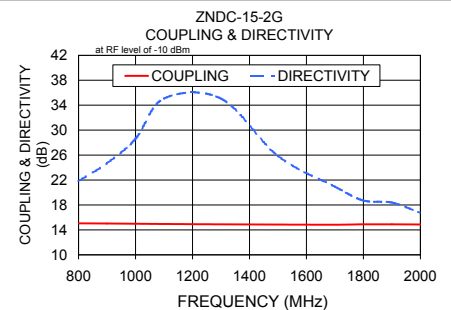
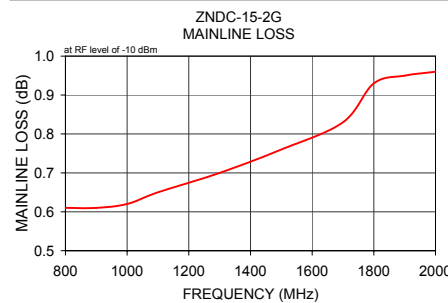
The +Suffix identifies RoHS Compliance. See our web site for RoHS Compliance methodologies and qualifications.

Directional Coupler Electrical Specifications

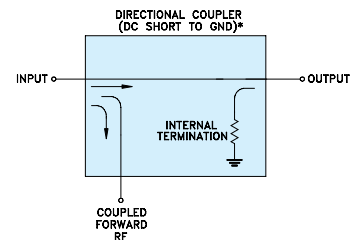
FREQ. RANGE (MHz)	COUPLING (dB)		MAINLINE LOSS (dB)		DIRECTIVITY (dB)		VSWR (:1)	POWER INPUT (W)
	Nom.	Max. Flatness	Typ.	Max.	Typ.	Min.		
800-2000								
800-1000	15.2±0.5	±0.3	0.6	0.9	25	17	1.2	3
1000-1700	15±0.5	±0.3	0.8	1.2	22	17	1.2	3
1700-2000	15±0.5	±0.3	0.8	1.3	18	14	1.3	3

Typical Performance Data

Frequency (MHz)	Mainline Loss (dB) In-Out	Coupling (dB) In-Cpl	Directivity (dB)	Return Loss (dB)		
				In	Out	Cpl
800.00	0.61	15.05	21.82	16.76	16.78	17.94
900.00	0.61	15.02	24.69	17.99	18.24	19.75
1000.00	0.62	14.98	28.62	19.41	19.78	21.74
1100.00	0.65	14.95	35.07	20.93	21.42	24.05
1300.00	0.70	14.89	35.05	24.28	25.40	30.01
1500.00	0.76	14.85	25.86	27.83	28.00	27.12
1700.00	0.83	14.83	20.93	29.58	26.43	21.76
1800.00	0.93	14.90	18.71	28.87	25.74	19.68
1900.00	0.95	14.89	18.39	29.56	22.52	17.83
2000.00	0.96	14.87	16.73	31.44	22.01	16.30



Electrical Schematic



* ELECTRICAL SCHEMATIC IS FOR DIRECTIONAL COUPLER WITH INTERNAL TRANSFORMER(S) THAT ROUTES DC FROM RF PORTS TO GROUND.

Mini-Circuits®
ISO 9001 ISO 14001 AS 9100 CERTIFIED

minicircuits.com

P.O. Box 350166, Brooklyn, New York 11235-0003 (718) 934-4500 Fax (718) 332-4661 For detailed performance specs & shopping online see Mini-Circuits web site



The Design Engineers Search Engine Provides ACTUAL Data Instantly From MINI-CIRCUITS At: www.minicircuits.com

IF/RF MICROWAVE COMPONENTS

REV. B
M119986
ED-10172/1
ZNDC-15-2G
W2/TD/CP/AM
081112