


"Half-Bridge" IGBT INT-A-PAK (Ultrafast Speed IGBT), 100 A



INT-A-PAK

FEATURES

- Generation 4 IGBT technology
- Ultrafast: Optimized for high speed 8 kHz to 40 kHz in hard switching, > 200 kHz in resonant mode
- Very low conduction and switching losses
- HEXFRED® antiparallel diodes with ultrasoft recovery
- Industry standard package
- UL approved file E78996 
- Compliant to RoHS directive 2002/95/EC
- Designed and qualified for industrial level



PRODUCT SUMMARY	
V_{CES}	1200 V
I_C DC	182 A
$V_{CE(on)}$ at 100 A, 25 °C	2.25 V

BENEFITS

- Increased operating efficiency
- Direct mounting to heatsink
- Performance optimized for power conversion: UPS, SMPS, welding
- Lower EMI, requires less snubbing

ABSOLUTE MAXIMUM RATINGS				
PARAMETER	SYMBOL	TEST CONDITIONS	MAX.	UNITS
Collector to emitter voltage	V_{CES}		1200	V
Continuous collector current	I_C	$T_C = 25\text{ °C}$	182	A
		$T_C = 93\text{ °C}$	100	
Pulsed collector current	I_{CM}	Repetitive rating; $V_{GE} = 20\text{ V}$, pulse width limited by maximum junction temperature	200	
Peak switching current See fig. 17	I_{LM}		200	
Peak diode forward current	I_{FM}		200	V
Gate to emitter voltage	V_{GE}		± 20	
RMS isolation voltage	V_{ISOL}	Any terminal to case, $t = 1\text{ minute}$	2500	W
Maximum power dissipation	P_D	$T_C = 25\text{ °C}$	520	
		$T_C = 85\text{ °C}$	270	
Operating junction temperature range	T_J		- 40 to + 150	°C
Storage temperature range	T_{Stg}		- 40 to + 125	

ELECTRICAL SPECIFICATIONS ($T_J = 25\text{ }^\circ\text{C}$ unless otherwise specified)						
PARAMETER	SYMBOL	TEST CONDITIONS	MIN.	TYP.	MAX.	UNITS
Collector to emitter breakdown voltage	$V_{(BR)CES}$	$V_{GE} = 0\text{ V}, I_C = 1\text{ mA}$	1200	-	-	V
Collector to emitter voltage	$V_{CE(on)}$	$V_{GE} = 15\text{ V}, I_C = 100\text{ A}$	-	2.25	3	
		$V_{GE} = 15\text{ V}, I_C = 100\text{ A}, T_J = 125\text{ }^\circ\text{C}$	-	2	2.4	
Gate threshold voltage	$V_{GE(th)}$	$I_C = 1.25\text{ mA}$	3.0	4.4	6.0	
Temperature coefficient of threshold voltage	$\Delta V_{GE(th)}/\Delta T_J$	$V_{CE} = V_{GE}, I_C = 1.25\text{ mA}$	-	-12	-	mV/°C
Forward transconductance	g_{fe}	$V_{CE} = 25\text{ V}, I_C = 100\text{ A}$ Pulse width 50 μs , single shot	-	136	-	S
Collector to emitter leaking current	I_{CES}	$V_{GE} = 0\text{ V}, V_{CE} = 1200\text{ V}$	-	0.03	1.0	mA
		$V_{GE} = 0\text{ V}, V_{CE} = 1200\text{ V}, T_J = 125\text{ }^\circ\text{C}$	-	4.2	10	
Maximum diode forward voltage	V_{FM}	$V_{GE} = 0\text{ V}, I_F = 100\text{ A}$	-	3.3	4.0	V
		$V_{GE} = 0\text{ V}, I_F = 100\text{ A}, T_J = 125\text{ }^\circ\text{C}$	-	3.2	3.8	
Gate to emitter leakage current	I_{GES}	$V_{GE} = \pm 20\text{ V}$	-	-	250	nA

SWITCHING CHARACTERISTICS ($T_J = 25\text{ }^\circ\text{C}$ unless otherwise noted)						
PARAMETER	SYMBOL	TEST CONDITIONS	MIN.	TYP.	MAX.	UNITS
Total gate charge (turn-on)	Q_g	$V_{CC} = 400\text{ V}$ $I_C = 124\text{ A}$	-	830	1245	nC
Gate to emitter charge (turn-on)	Q_{ge}		-	140	210	
Gate to collector charge (turn-on)	Q_{gc}		-	275	412	
Turn-on delay time	$t_{d(on)}$	$R_{g1} = 15\text{ }\Omega$ $R_{g2} = 0\text{ }\Omega$ $I_C = 100\text{ A}$ $V_{CC} = 720\text{ V}$	-	570	-	ns
Rise time	t_r		-	85	-	
Turn-off delay time	$t_{d(off)}$		-	581	-	
Fall time	t_f		-	276	-	
Turn-on switching energy	E_{on}	$V_{GE} = \pm 15\text{ V}$ $T_J = 25\text{ }^\circ\text{C}$	-	7.6	-	mJ
Turn-off switching energy	$E_{off}^{(1)}$		-	6.8	-	
Total switching energy	$E_{ts}^{(1)}$		-	14.4	-	
Turn-on delay time	$t_{d(on)}$	$R_{g1} = 15\text{ }\Omega$ $R_{g2} = 0\text{ }\Omega$ $I_C = 100\text{ A}$ $V_{CC} = 720\text{ V}$	-	571	-	ns
Rise time	t_r		-	89	-	
Turn-off delay time	$t_{d(off)}$		-	606	-	
Fall time	t_f		-	649	-	
Turn-on switching energy	E_{on}	$V_{GE} = \pm 15\text{ V}$ $T_J = 125\text{ }^\circ\text{C}$	-	10	-	mJ
Turn-off switching energy	$E_{off}^{(1)}$		-	16	-	
Total switching energy	$E_{ts}^{(1)}$		-	26	45	
Input capacitance	C_{ies}	$V_{GE} = 0\text{ V}$	-	18 672	-	pF
Output capacitance	C_{oes}	$V_{CC} = 30\text{ V}$	-	830	-	
Reverse transfer capacitance	C_{res}	$f = 1\text{ MHz}$	-	161	-	
Diode reverse recovery time	t_{rr}	$I_C = 100\text{ A}$	-	149	-	ns
Diode peak reverse current	I_{rr}	$R_{g1} = 15\text{ }\Omega$ $R_{g2} = 0\text{ }\Omega$	-	104	-	A
Diode recovery charge	Q_{rr}	$V_{CC} = 720\text{ V}$	-	7664	-	μC
Diode peak rate of fall of recovery during t_b	$dl_{(rec)M}/dt$	$dl/dt = 1300\text{ A}/\mu\text{s}$	-	1916	-	A/ μs

Note

(1) Repetitive rating; $V_{GE} = 20\text{ V}$, pulse width limited by maximum junction temperature



THERMAL AND MECHANICAL SPECIFICATIONS					
PARAMETER	SYMBOL	TEST CONDITIONS	TYP.	MAX.	UNITS
Thermal resistance, junction to case	IGBT		-	0.24	°C/W
	Diode		-	0.35	
Thermal resistance, case to sink per module	R_{thCS}		0.1	-	
Mounting torque	case to heatsink		-	4.0	Nm
	case to terminal 1, 2 and 3	For screws M5 x 0.8	-	3.0	
Weight of module			200	-	g

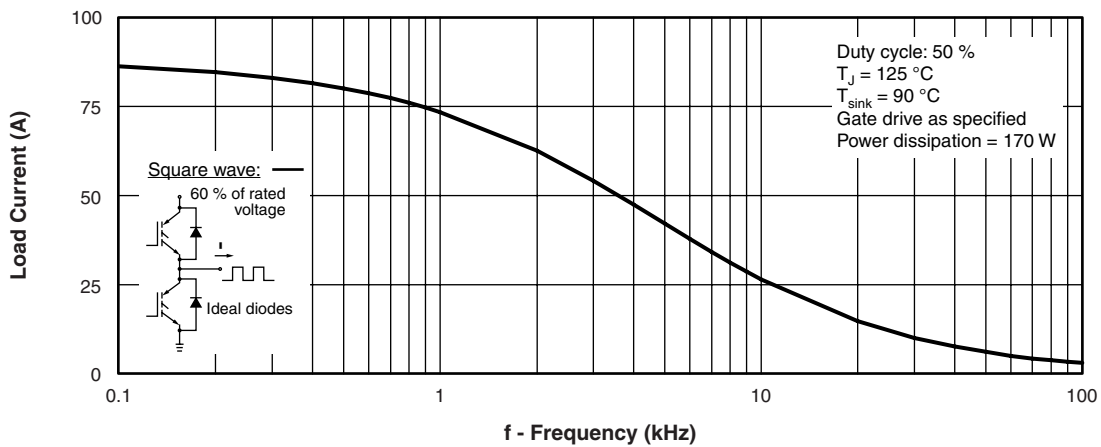


Fig. 1 - Typical Load Current vs. Frequency
(Load Current = I_{RMS} of Fundamental)

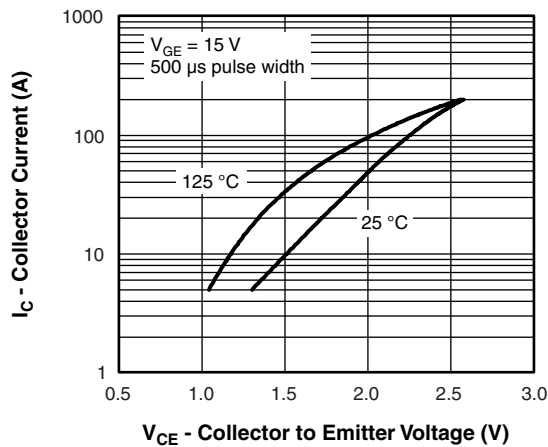


Fig. 2 - Typical Output Characteristics

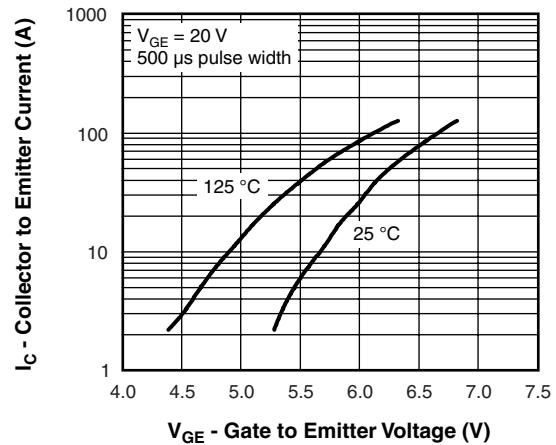


Fig. 3 - Typical Transfer Characteristics

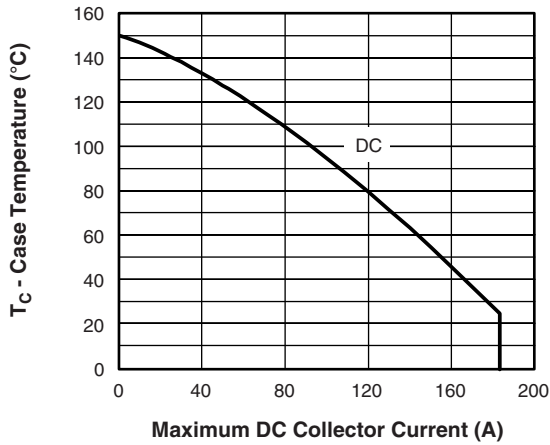


Fig. 4 - Case Temperature vs. Maximum Collector Current

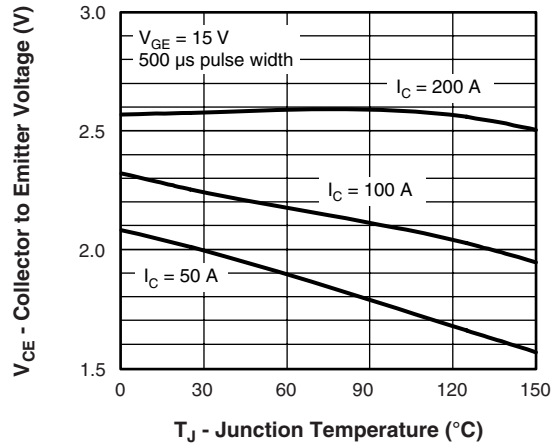


Fig. 5 - Typical Collector to Emitter Voltage vs. Junction Temperature

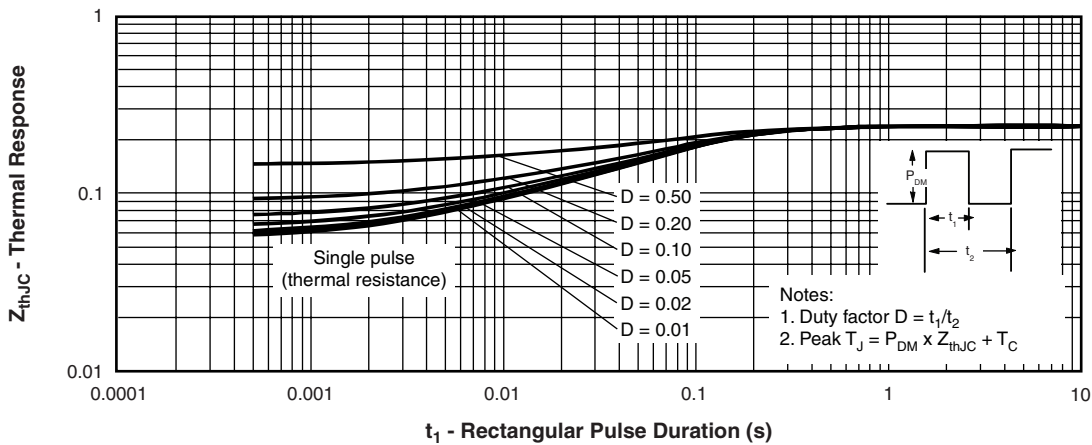


Fig. 6 - Maximum Effective Transient Thermal Impedance, Junction to Case

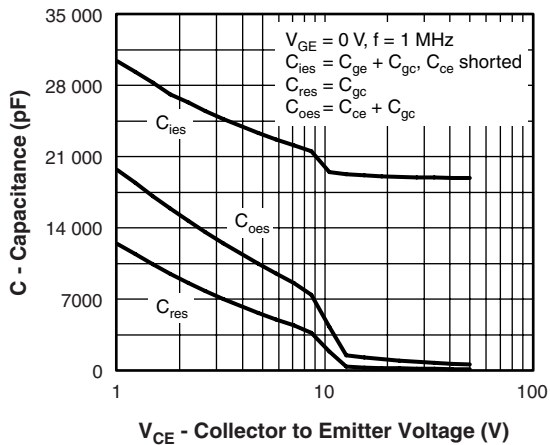


Fig. 7 - Typical Capacitance vs. Collector to Emitter Voltage

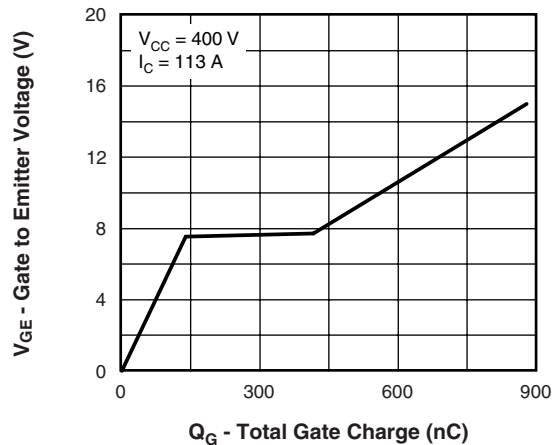


Fig. 8 - Typical Gate Charge vs. Gate to Emitter Voltage

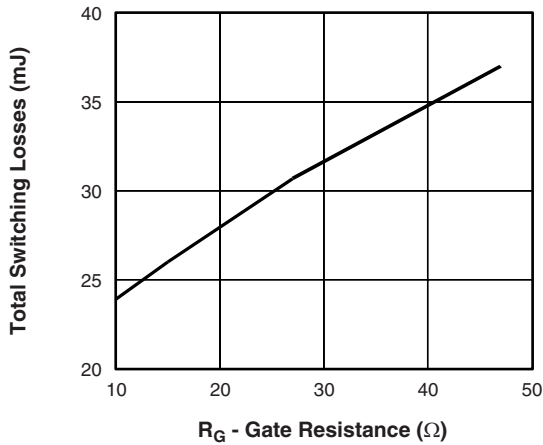


Fig. 9 - Typical Switching Losses vs. Gate Resistance

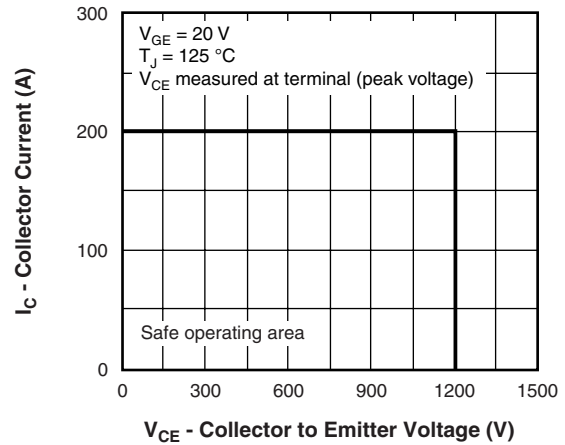


Fig. 12 - Reverse Bias SOA

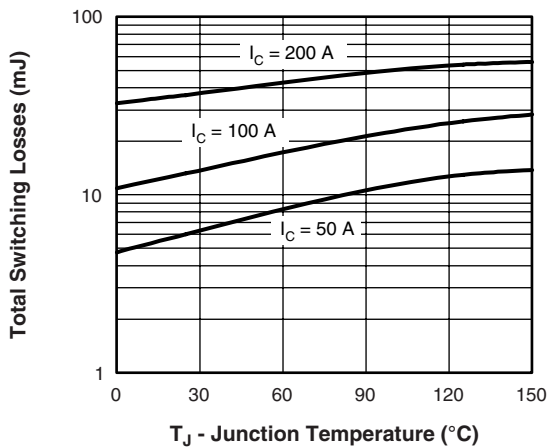


Fig. 10 - Typical Switching Losses vs. Junction Temperature

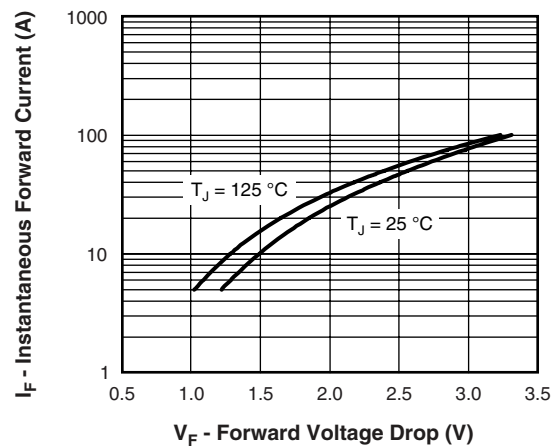


Fig. 13 - Typical Forward Voltage Drop vs. Instantaneous Forward Current

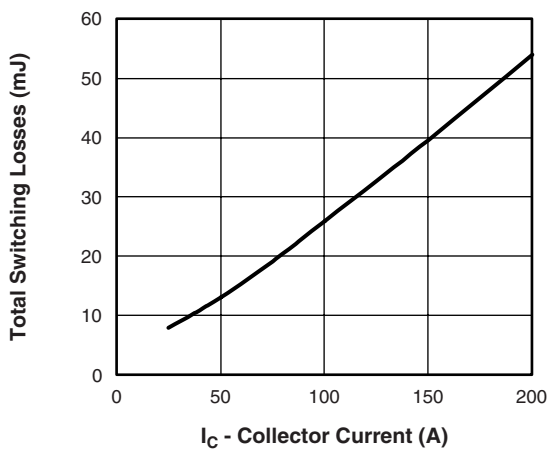


Fig. 11 - Typical Switching Losses vs. Collector Current

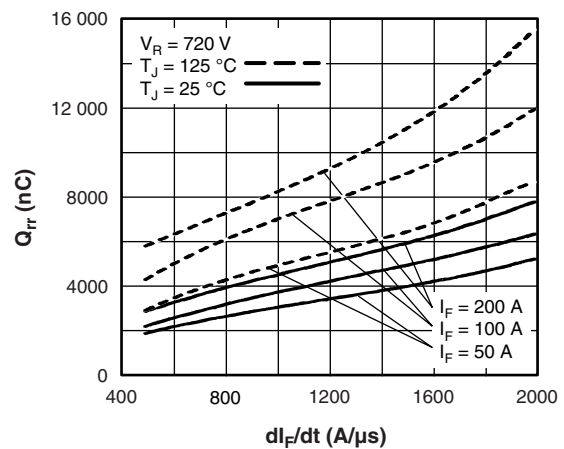


Fig. 14 - Typical Stored Charge vs. di_F/dt

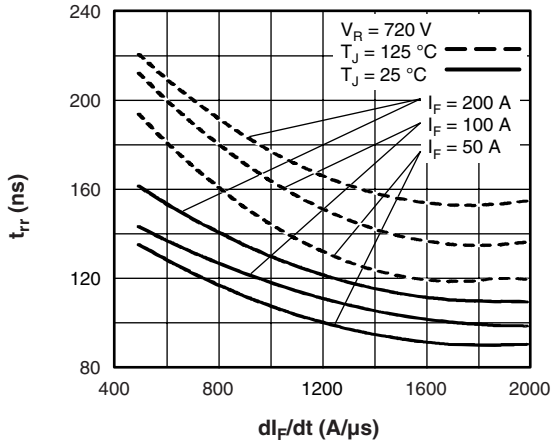


Fig. 15 - Typical Reverse Recovery Time vs. di_F/dt

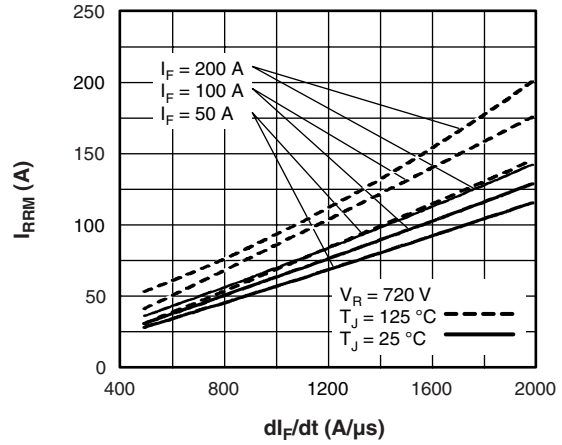


Fig. 16 - Typical Recovery Current vs. di_F/dt

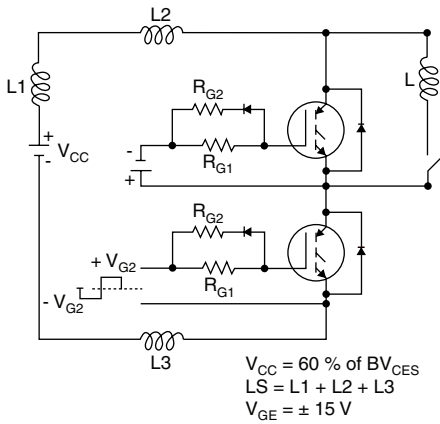


Fig. 17a - Test Circuit for Measurement of I_{LM} , E_{on} , $E_{off}(\text{diode})$, t_{rr} , Q_{rr} , I_{rr} , $t_{d(on)}$, t_r , $t_{d(off)}$, t_f

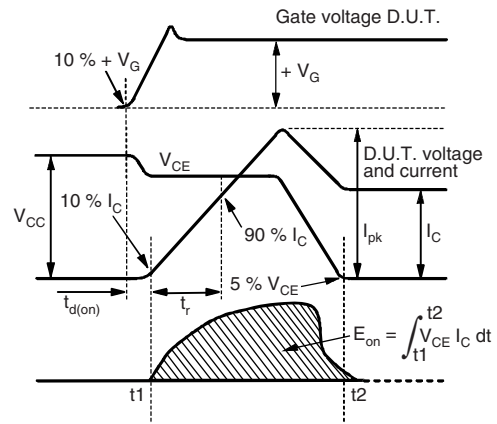


Fig. 17c - Test Waveforms for Circuit of Fig. 18a, Defining E_{on} , $t_{d(on)}$, t_r

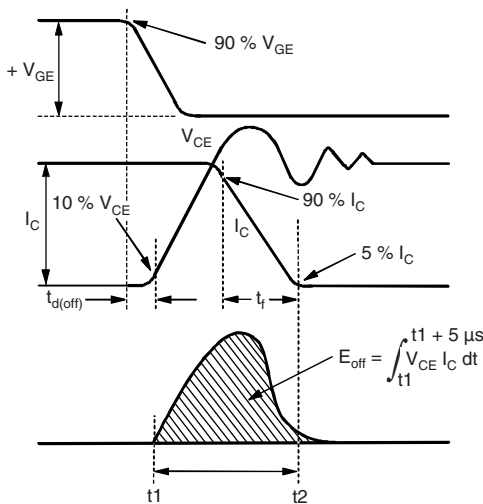


Fig. 17b - Test Waveforms for Circuit of Fig. 18a, Defining E_{off} , $t_{d(off)}$, t_r

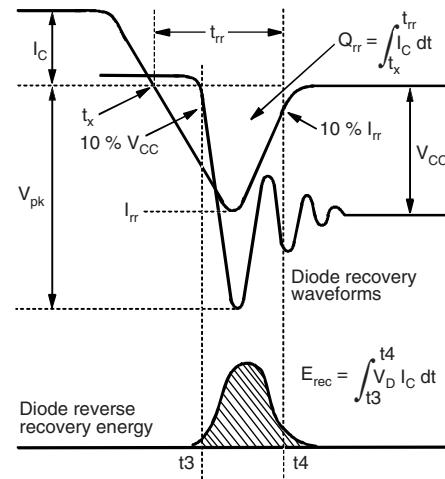


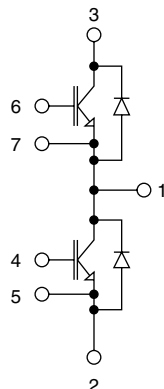
Fig. 17d - Test Waveforms for Circuit of Fig. 18a, Defining E_{rec} , t_{rr} , Q_{rr} , I_{rr}

GA100TS120UPbF



Vishay High Power Products "Half-Bridge" IGBT INT-A-PAK
(Ultrafast Speed IGBT), 100 A

CIRCUIT CONFIGURATION

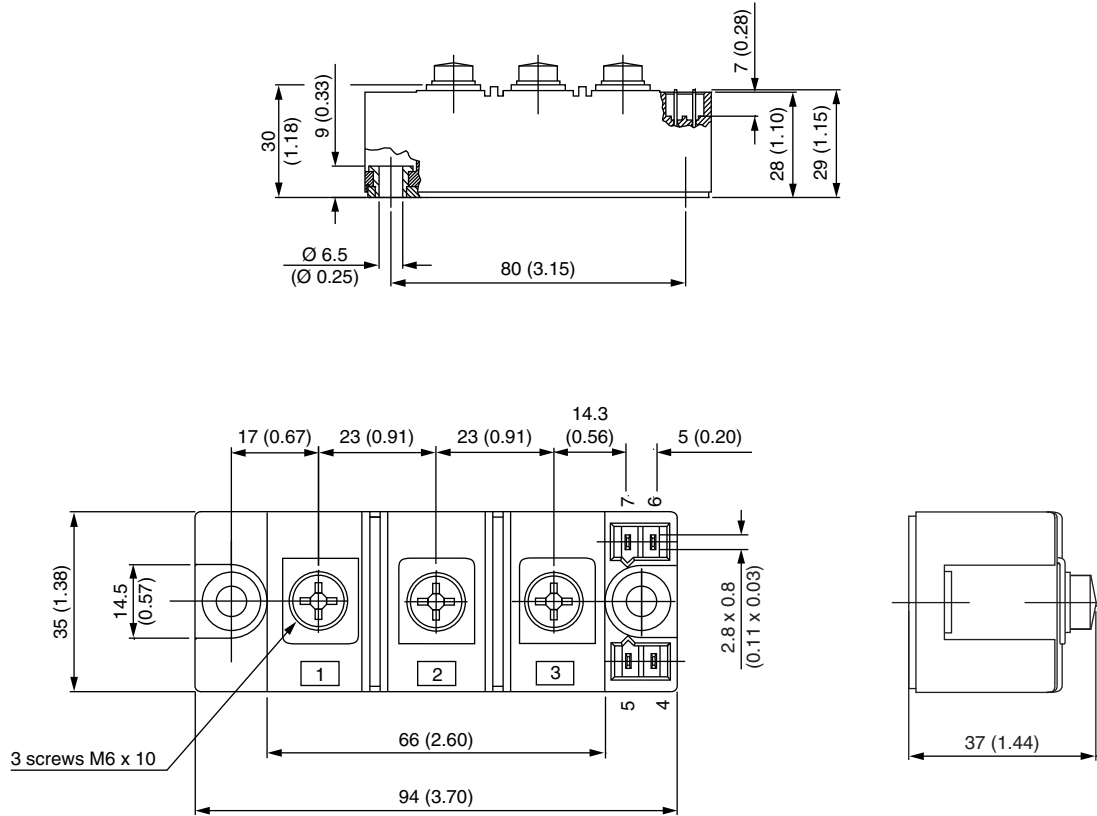


LINKS TO RELATED DOCUMENTS

Dimensions	www.vishay.com/doc?95173
------------	--

INT-A-PAK IGBT

DIMENSIONS in millimeters (inches)





Disclaimer

ALL PRODUCT, PRODUCT SPECIFICATIONS AND DATA ARE SUBJECT TO CHANGE WITHOUT NOTICE TO IMPROVE RELIABILITY, FUNCTION OR DESIGN OR OTHERWISE.

Vishay Intertechnology, Inc., its affiliates, agents, and employees, and all persons acting on its or their behalf (collectively, "Vishay"), disclaim any and all liability for any errors, inaccuracies or incompleteness contained in any datasheet or in any other disclosure relating to any product.

Vishay makes no warranty, representation or guarantee regarding the suitability of the products for any particular purpose or the continuing production of any product. To the maximum extent permitted by applicable law, Vishay disclaims (i) any and all liability arising out of the application or use of any product, (ii) any and all liability, including without limitation special, consequential or incidental damages, and (iii) any and all implied warranties, including warranties of fitness for particular purpose, non-infringement and merchantability.

Statements regarding the suitability of products for certain types of applications are based on Vishay's knowledge of typical requirements that are often placed on Vishay products in generic applications. Such statements are not binding statements about the suitability of products for a particular application. It is the customer's responsibility to validate that a particular product with the properties described in the product specification is suitable for use in a particular application. Parameters provided in datasheets and/or specifications may vary in different applications and performance may vary over time. All operating parameters, including typical parameters, must be validated for each customer application by the customer's technical experts. Product specifications do not expand or otherwise modify Vishay's terms and conditions of purchase, including but not limited to the warranty expressed therein.

Except as expressly indicated in writing, Vishay products are not designed for use in medical, life-saving, or life-sustaining applications or for any other application in which the failure of the Vishay product could result in personal injury or death. Customers using or selling Vishay products not expressly indicated for use in such applications do so at their own risk and agree to fully indemnify and hold Vishay and its distributors harmless from and against any and all claims, liabilities, expenses and damages arising or resulting in connection with such use or sale, including attorneys fees, even if such claim alleges that Vishay or its distributor was negligent regarding the design or manufacture of the part. Please contact authorized Vishay personnel to obtain written terms and conditions regarding products designed for such applications.

No license, express or implied, by estoppel or otherwise, to any intellectual property rights is granted by this document or by any conduct of Vishay. Product names and markings noted herein may be trademarks of their respective owners.