

PLEASE CHECK WWW.MOLEX.COM FOR LATEST PART INFORMATION

Part Number: **0448120048**
Status: **Active**
Description: 2.54mm (.100") Pitch KK® PC Board Receptacle, Top and Bottom Entry, Low Profile, 0.8µm (30µ") Gold (Au), 10 Circuits

Documents:

[3D Model](#) [Product Specification PS-44812-001 \(PDF\)](#)
[Drawing \(PDF\)](#) [RoHS Certificate of Compliance \(PDF\)](#)

Agency Certification

CSA LR19980
 UL E29179

General

Product Family PCB Receptacles
 Series [44812](#)
 Application Board-to-Board
 Product Name KK®

Physical

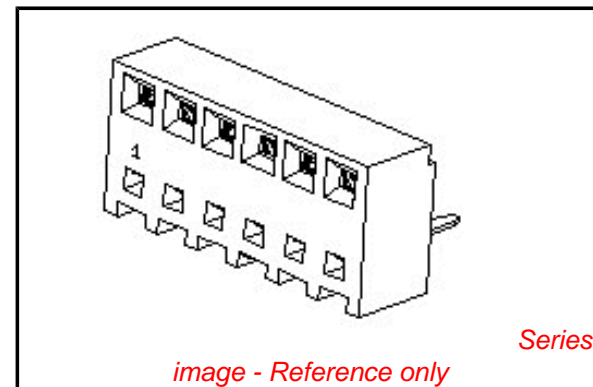
Circuits (Loaded) 10
 Color - Resin Black
 Durability (mating cycles max) 25
 Flammability 94V-0
 Glow-Wire Compliant No
 Material - Metal High Performance Alloy (HPA)
 Material - Plating Mating Gold
 Material - Plating Termination Tin
 Material - Resin High Temperature Thermoplastic
 Number of Rows 1
 Orientation Vertical
 PCB Locator No
 PCB Retention None
 PCB Thickness Recommended (in) 0.062 In, 0.093 In
 PCB Thickness Recommended (mm) 1.60 mm, 2.40 mm
 Packaging Type Tube
 Pitch - Mating Interface (in) 0.100 In
 Pitch - Mating Interface (mm) 2.54 mm
 Plating min: Mating (µin) 30
 Plating min: Mating (µm) 0.75
 Plating min: Termination (µin) 100
 Plating min: Termination (µm) 2.5
 Polarized to PCB No
 Surface Mount Compatible (SMC) Yes
 Temperature Range - Operating -40°C to +105°C
 Termination Interface: Style Through Hole

Electrical

Current - Maximum per Contact 5A
 Voltage - Maximum 250V

Solder Process Data

Duration at Max. Process Temperature (seconds) 5
 Lead-free Process Capability Wave Capable (TH only)
 Max. Cycles at Max. Process Temperature 1
 Process Temperature max. C 250



EU RoHS

ELV and RoHS Compliant
REACH SVHC Contains SVHC: No
Halogen-Free Status

China RoHS



Not Halogen-Free

Need more information on product environmental compliance?

Email productcompliance@molex.com
 For a multiple part number RoHS Certificate of Compliance, [click here](#)

Please visit the [Contact Us](#) section for any non-product compliance questions.

Search Parts in this Series

[44812Series](#)

Mates With

[42153](#) , [4094](#) , [42376](#) , [42375](#) , [42377](#) , [42152](#) , [4030](#)

Material Info

Reference - Drawing Numbers

Product Specification

PS-44812-001

Sales Drawing

SD-44812-001

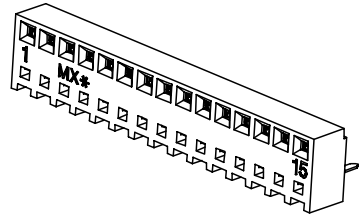
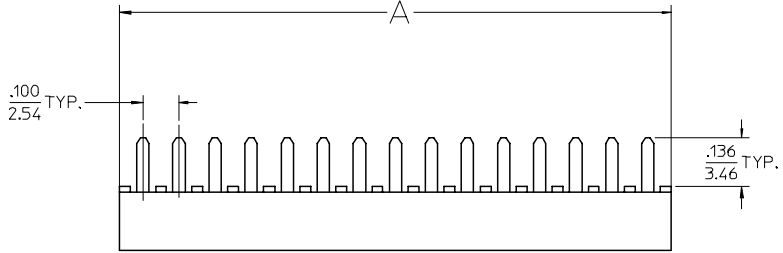
This document was generated on 04/14/2010

PLEASE CHECK WWW.MOLEX.COM FOR LATEST PART INFORMATION

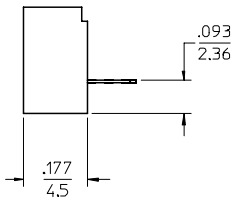
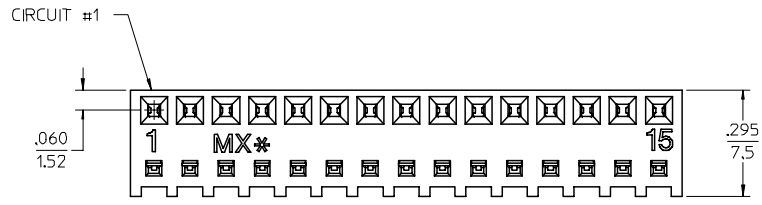
13 12 11 10 9 8 7 6 5 4 3 2 1

J
I
H
G
F
E
D
C
B
A

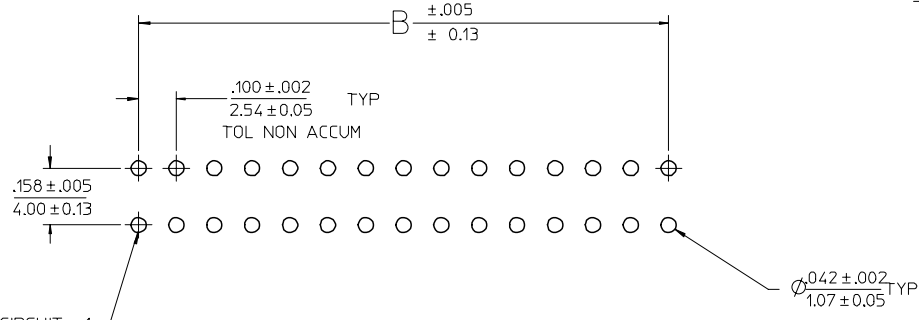
J
I
H
G
F
E
D
C
B
A



CKTS	DIM A	DIM B
2	.230 5.84	.100 2.54
3	.330 8.38	.200 5.08
4	.430 10.92	.300 7.62
5	.530 13.46	.400 10.16
6	.630 16.00	.500 12.70
7	.730 18.54	.600 15.24
8	.830 21.08	.700 17.78
9	.930 23.62	.800 20.32
10	1.030 26.16	.900 22.86
11	1.130 28.70	1.000 25.40
12	1.230 31.24	1.100 27.94
13	1.330 33.78	1.200 30.48
14	1.430 36.32	1.300 33.02
15	1.530 38.86	1.400 35.56
16	1.630 41.40	1.500 38.10



- NOTES :
- MATERIAL -
HOUSING : HIGH TEMP NYLON, GLASS-FILLED, UL94V-0, COLOR - BLACK
TERMINAL : MODIFIED TIN/BRASS ALLOY
 - FINISH - (SEE CHART)
A-TIN: .000200/(0.00508) MINIMUM
B-SELECT GOLD: .000015/(0.00038) MIN., SELECT TIN: .000100/(0.00254) MIN., OVER NICKEL
C-SELECT GOLD: .000030/(0.00076) MIN., SELECT TIN: .000100/(0.00254) MIN., OVER NICKEL
- * THE PRIMARY SHIPPING CARTON WILL BE LABELED "COMPLIANT TO RoHS DIRECTIVE 2002/95/EC AND ELV ANNEX II OF DIRECTIVE 2000/53/EC". CARTONS WITHOUT THIS LABEL MAY CONTAIN TIN/LEAD.
- PRODUCT SPECIFICATION : PS-44812-001
 - PACKAGING SPECIFICATION : TRAY PACK PER PK-44812-001
 - 15 CIRCUIT PART SHOWN SEE SHEET 2 FOR OTHER CIRCUIT SIZES.



PCB LAYOUT : COMPONENT SIDE SHOWN
RECOMMENDED PCB THK: .062/1.57

UPDATE FINISH FC NO: UCP2006-2478 DRAWN/PRI/DDR 2006/03/17 CHKD:ADERR 2006/03/21 APPR:FSM TH 2006/03/22	QUALITY SYMBOLS ▽=0 ▽=0	GENERAL TOLERANCES (UNLESS SPECIFIED)		DIMENSION STYLE IN/MM		SCALE 4:1	DESIGN UNITS INCH	THIRD ANGLE PROJECTION
		mm	INCH	DRAWN BY MUELLER	DATE 2001/09/22	TITLE KK 100 PCB CONN ASSY LOW PROFILE		
D1	DESCRIPTION	4 PLACES ± --- ± ---	3 PLACES ± --- ± .010	2 PLACES ± 0.25 ± .015	1 PLACE ± 0.38 ± ---	CHECKED BY MUELLER	DATE 2001/09/23	MOLEX INCORPORATED
		ANGULAR ±1/2°		APPROVED BY MARGULIS		DATE 2001/09/24	DOCUMENT NO. SD-44812-001	
DRAFT WHERE APPLICABLE MUST REMAIN WITHIN DIMENSIONS		SEE CHART		THIS DRAWING CONTAINS INFORMATION THAT IS PROPRIETARY TO MOLEX INCORPORATED AND SHOULD NOT BE USED WITHOUT WRITTEN PERMISSION				

12 11 10 9 8 7 6 5 4 3 2 1

FINISH: A (TIN)	
CKTS	MATERIAL NO.
2	44812-0002
3	44812-0003
4	44812-0004
5	44812-0005
6	44812-0006
7	44812-0007
8	44812-0008
9	44812-0009
10	44812-0010
11	44812-0011
12	44812-0012
13	44812-0013
14	44812-0014
15	44812-0015
16	44812-0016

FINISH: B (15 GOLD)	
CKTS	MATERIAL NO.
2	44812-0020
3	44812-0021
4	44812-0022
5	44812-0023
6	44812-0024
7	44812-0025
8	44812-0026
9	44812-0027
10	44812-0028
11	44812-0029
12	44812-0030
13	44812-0031
14	44812-0032
15	44812-0033
16	44812-0034

FINISH: C (30 GOLD)	
CKTS	MATERIAL NO.
2	44812-0040
3	44812-0041
4	44812-0042
5	44812-0043
6	44812-0044
7	44812-0045
8	44812-0046
9	44812-0047
10	44812-0048
11	44812-0049
12	44812-0050
13	44812-0051
14	44812-0052
15	44812-0053
16	44812-0054

UPDATE FINISH FC NO: UCP2006-2178 DRAWN BY: DER CHKD: ADERR APPR: FSM TH D1	2006/03/17 2006/03/21 2006/03/22	QUALITY SYMBOLS 	GENERAL TOLERANCES (UNLESS SPECIFIED)		DIMENSION STYLE IN/MM		SCALE 1:1	DESIGN UNITS INCH	THIRD ANGLE PROJECTION	
			4 PLACES ± --- ± ---	3 PLACES ± --- ± .010	DRAWN BY MUELLER	DATE 2001/09/22	TITLE KK 100 PCB CONN ASSY LOW PROFILE			
			2 PLACES ± 0.25 ± .015	1 PLACE ± 0.38 ± ---	CHECKED BY MUELLER	DATE 2001/09/23	MOLEX INCORPORATED			
			ANGULAR ±1/2°		APPROVED BY MARGULIS	DATE 2001/09/24	DOCUMENT NO. SD-44812-001		SHEET NO. 2 OF 2	
DRAFT WHERE APPLICABLE MUST REMAIN WITHIN DIMENSIONS			SEE CHART		THIS DRAWING CONTAINS INFORMATION THAT IS PROPRIETARY TO MOLEX INCORPORATED AND SHOULD NOT BE USED WITHOUT WRITTEN PERMISSION					