

Monolithic crystal filter

MQF21.855-1200/01



Application

- 2 pol filter
- i.f.- filter
- use in mobile and stationary transceivers

Limiting values

		Unit	Value
Center frequency	f_0	MHz	21.855
Insertion loss		dB	≤ 1.5
Pass band at 3.0 dB		kHz	± 6.0
Ripple in pass band	$f_0 \pm 3.0$ kHz	dB	≤ 0.5
Stop band attenuation	$f_0 \pm 25$ kHz	dB	≥ 20
Alternate attenuation	$f_0 + 0.35 \dots 1$ MHz	dB	> 35
	$f_0 - 0.2 \dots 1$ MHz	dB	> 50

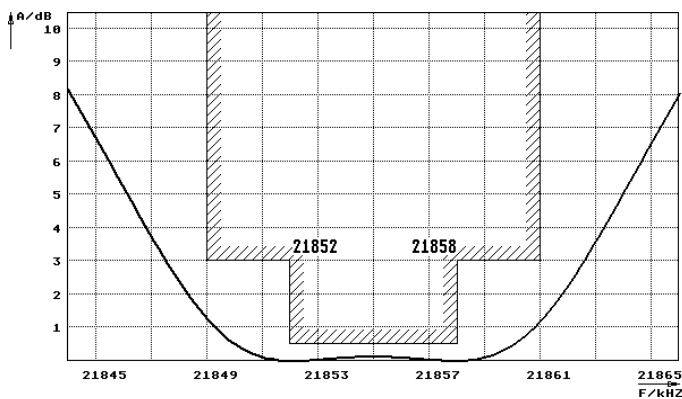
Terminating impedance Z

R1 C1	Ohm/pF	910 3
R2 C2	Ohm/pF	910 3

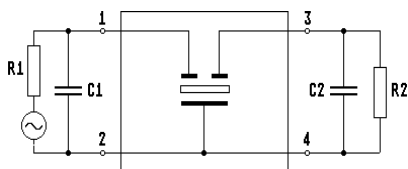
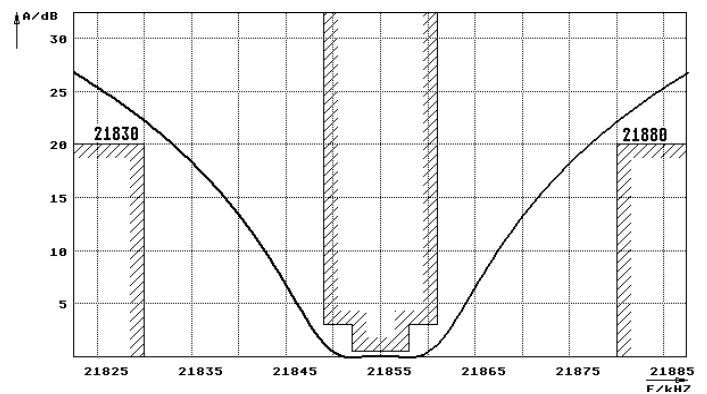
Operating temp. range	$^{\circ}\text{C}$	-20... +70
-----------------------	--------------------	------------

Characteristics MQF21.855-1200/01

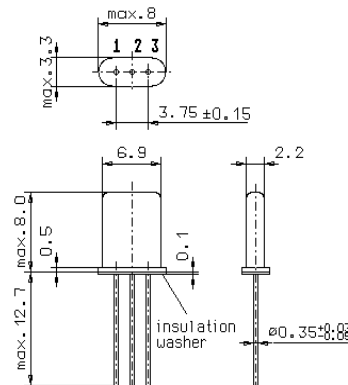
Pass band



Stop band



Pin connections: 1 Input
2 Input-E
3 Output
4 Output-E



GH9.1