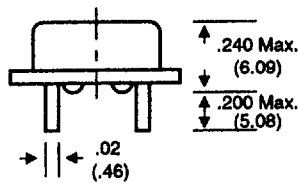
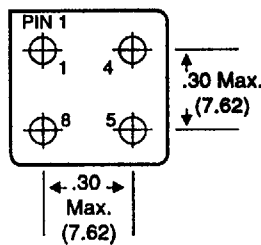




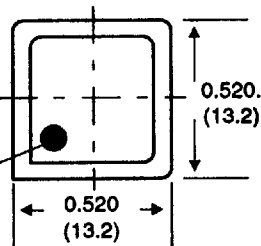
# COMCLOK

## HCMOS Clock Oscillators

### Dimensions & Pin Connections



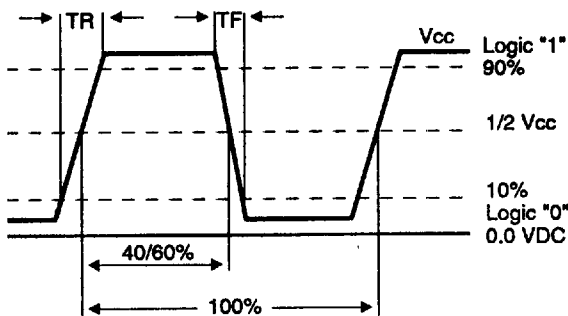
INCHES  
(mm)



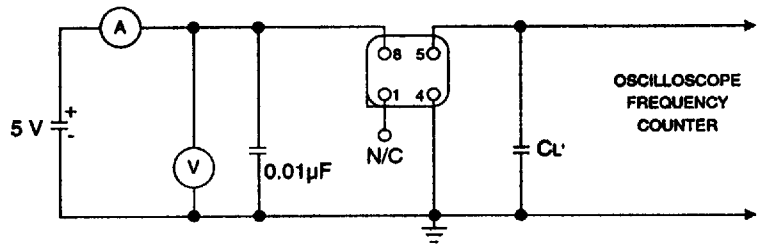
DOT DENOTES  
PIN 1 LOCATION

PIN	CONNECTION
1	N.C.
4	GND
5	OUTPUT
8	Vcc

### Wave Shape



### Test Circuit



\* Note: CL = 15pF includes probe and jig capacitance

All specifications subject to change without notice