

**PLEASE CHECK WWW.MOLEX.COM FOR LATEST PART INFORMATION**

**Part Number:** [0879370801](#)  
**Status:** **Active**  
**Overview:** [kk](#)  
**Description:** 2.54mm (.100") Pitch KK® Header, Single Row Dual Body, Through Hole, Vertical, 8 Circuits, 0.75µm (29µ") Gold (Au) Plating, 10.90mm (.429") Stacking Height, Tray Packaging, Lead-free

**Documents:**

[Drawing \(PDF\)](#) [RoHS Certificate of Compliance \(PDF\)](#)  
[Product Specification PS-87920-019 \(PDF\)](#)

**Agency Certification**

UL E29179

**General**

Product Family PCB Headers  
 Series [87937](#)  
 Application Board-to-Board, Wire-to-Board  
 Overview [kk](#)  
 Product Name Dual Body, KK®

**Physical**

Breakaway Yes  
 Circuits (Loaded) 8  
 Circuits (maximum) 8  
 Color - Resin Black  
 First Mate / Last Break No  
 Flammability 94V-0  
 Glow-Wire Compliant No  
 Guide to Mating Part No  
 Keying to Mating Part None  
 Lock to Mating Part None  
 Mated Height (in) 0.480 In  
 Mated Height (mm) 12.20 mm  
 Material - Metal Copper Alloy  
 Material - Plating Mating Gold  
 Material - Plating Termination Gold  
 Material - Resin Nylon  
 Number of Rows 1  
 Orientation Vertical  
 PC Tail Length (in) 0.480 In  
 PC Tail Length (mm) 12.20 mm  
 PCB Locator No  
 PCB Retention None  
 PCB Thickness Recommended (in) 0.062 In  
 PCB Thickness Recommended (mm) 1.60 mm  
 Packaging Type Tray  
 Pitch - Mating Interface (in) 0.100 In  
 Pitch - Mating Interface (mm) 2.54 mm  
 Pitch - Term. Interface (in) 0.100 In  
 Pitch - Term. Interface (mm) 2.54 mm  
 Plating min: Mating (µin) 29  
 Plating min: Mating (µm) 0.75  
 Plating min: Termination (µin) 29  
 Plating min: Termination (µm) 0.75  
 Polarized to Mating Part No

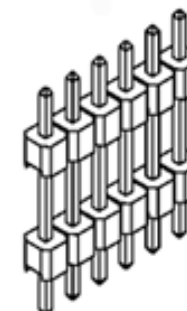


image - Reference only

Series

**EU RoHS**

**ELV and RoHS Compliant**  
**REACH SVHC**  
 Not Reviewed  
**Halogen-Free Status**  
**Not Reviewed**

**China RoHS**



**Need more information on product environmental compliance?**

Email [productcompliance@molex.com](mailto:productcompliance@molex.com)  
 For a multiple part number RoHS Certificate of Compliance, [click here](#)

Please visit the [Contact Us](#) section for any non-product compliance questions.

**Search Parts in this Series**

[87937Series](#)

**Mates With**

KK® PCB Receptacles [4455](#). SL™ IDT Housings [70430](#) , [7720](#), [70400](#). C-Grid® PCB Receptacles [90147](#), [90148](#)

Polarized to PCB	No
Shrouded	No
Stackable	No
Surface Mount Compatible (SMC)	Yes
Temperature Range - Operating	-55°C to +105°C
Termination Interface: Style	Through Hole

### **Electrical**

Current - Maximum per Contact	3A
Voltage - Maximum	250V

### **Solder Process Data**

Duration at Max. Process Temperature (seconds)	3
Lead-free Process Capability	Wave Capable (TH only)
Max. Cycles at Max. Process Temperature	1
Process Temperature max. C	255

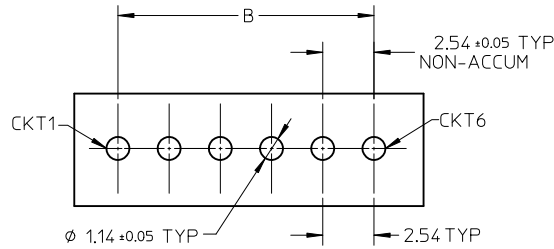
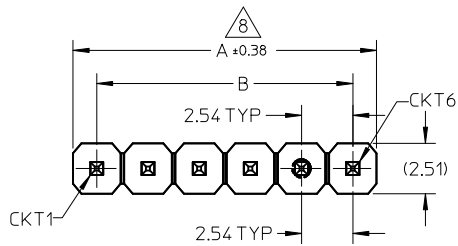
### **Material Info**

#### **Reference - Drawing Numbers**

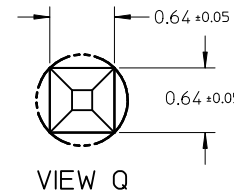
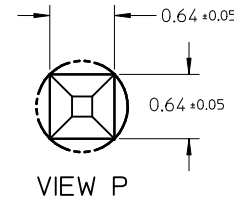
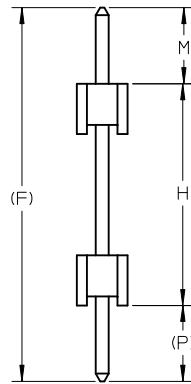
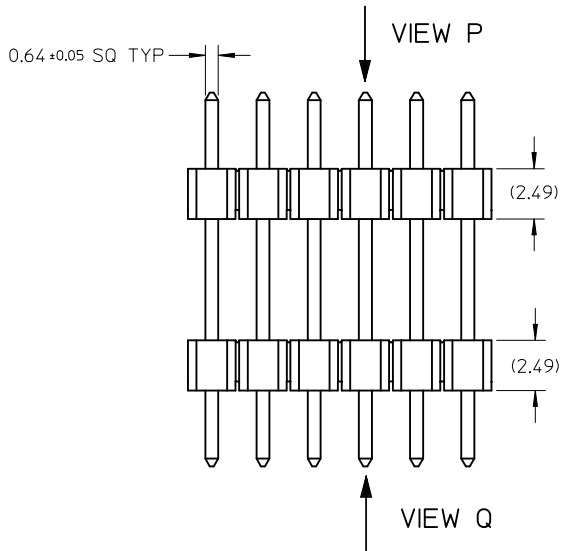
Packaging Specification	PK-89990-489
Product Specification	PS-87920-019
Sales Drawing	SD-87937-007

This document was generated on 05/26/2010

**PLEASE CHECK [WWW.MOLEX.COM](http://WWW.MOLEX.COM) FOR LATEST PART INFORMATION**

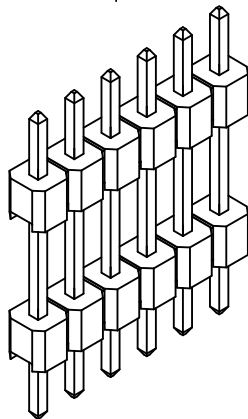


RECOMMENDED PCB HOLE LAYOUT



NOTES:

1. MATERIAL:  
HOUSING: NYLON, GLASS FILLED, UL94V-0,  
COLOR: BLACK  
TERMINAL: 0.64MM SQ PIN, COPPER ALLOY
2. PLATING TYPE:
  - (1) : GOLD FLASH OVER  
1.25µm MIN. NICKEL OVERALL.
  - (2) : 0.05 µm MIN. GOLD PLATE ON CONTACT AND  
2.50 µm MIN. TIN ON SOLDERTAIL OVER  
1.25 µm MIN. NICKEL OVERALL.
  - (3) : 0.38 µm MIN. GOLD PLATE ON CONTACT AND  
2.00 µm MIN. TIN ON SOLDERTAIL OVER  
1.25 µm MIN. NICKEL OVERALL.
  - (4) : 0.75 µm MIN. GOLD PLATE ON CONTACT AND  
2.00 µm MIN. TIN ON SOLDERTAIL OVER  
1.25 µm MIN. NICKEL OVERALL.
  - (5) : 2.50 µm MIN. TIN OVER  
1.25 µm MIN. NICKEL OVERALL.
  - (6) : 0.75 µm MIN. GOLD PLATE ON CONTACT AND  
SOLDERTAIL OVER 1.25 µm MIN. NICKEL OVERALL.
3. THE ABOVE 6 CKT IS FOR ILLUSTRATION PURPOSE ONLY.
4. PACKAGING TYPE: SEE TABLE
5. RECOMMENDED PCB THICKNESS 1.60MM.
6. PRODUCT SPECIFICATION: PS-87920-019
7. WAFER TO BE FLAT WITHIN 0.003mm/mm
8. IRREGULAR CIRCUIT CUTOFF WITHIN BREAKAWAY SECTION IS PERMISSIBLE. CUTTING OR CHIPPING OF THE MAIN BODY IS NOT ACCEPTABLE.
9. PARTS ARE NOT STACKABLE ON 2.54 CENTER
10. PACKAGING SPECIFICATION: SEE TABLE



ADD P/N: 87937-1602 EC NO: S2010-0138 DRWN:SKANG 2009/08/12 CHKD:ATSEE 2010/01/04 APPR:MLONG 2010/01/14	QUALITY SYMBOLS ▽=0 ◻=0	GENERAL TOLERANCES (UNLESS SPECIFIED)		DIMENSION STYLE		SCALE	DESIGN UNITS	THIRD ANGLE PROJECTION		
				MM ONLY		NTS	METRIC			
				mm	INCH	DRAWN BY		DATE		TITLE
						SKLIM01		2006/03/10		CUSTOM HEADER
REV A5	DESCRIPTION	4 PLACES ± --- ± ---		CHECKED BY		DATE		MOLEX INCORPORATED SD-87937-007	SHEET NO. 1 OF 2	
		3 PLACES ± --- ± ---		PATEY		2006/03/20				
		2 PLACES ± 0.2 ± ---		APPROVED BY		DATE				
		1 PLACE ± --- ± ---		MLONG		2010/01/14				
		ANGULAR ± 3 °		MATERIAL NO.		DOCUMENT NO.				
		DRAFT WHERE APPLICABLE MUST REMAIN WITHIN DIMENSIONS		SEE TABLE						
				SIZE		THIS DRAWING CONTAINS INFORMATION THAT IS PROPRIETARY TO MOLEX INCORPORATED AND SHOULD NOT BE USED WITHOUT WRITTEN PERMISSION				

10 | 9 | 8 | 7 | 6 | 5 | 4 | 3 | 2 | 1

PART NUMBERS	CKT SIZE	VOID POSITION	DIMENSION							PLATING OPTION	PACKAGING TYPE	PACKAGING SPECIFICATION
			A	B	M	H	(P)	(F)				
			MATING END	STACKER HEIGHT	SOLDER TAIL							
87937-0200	2	----	5.08	2.54	4.57	8.64	2.79	16.00	5	TRAY PACKED	PK-89990-489	
87937-0202	2	----	5.08	2.54	3.50	25.00	3.50	32.00	5	TRAY PACKED	PK-89990-489	
87937-0600	6	----	15.24	12.70	12.20	10.90	12.20	35.30	6	TRAY PACKED	PK-89990-489	
87937-0800	8	----	20.32	17.78	9.00	12.00	3.00	24.00	5	TRAY PACKED	PK-89990-489	
87937-0801	8	----	20.32	17.78	12.20	10.90	12.20	35.30	6	TRAY PACKED	PK-89990-489	
87937-1600	16	----	40.64	38.10	12.70	17.63	5.99	36.32	3	BULK PACKED	PK-89990-491	
87937-1601	16	----	40.64	38.10	11.94	19.05	2.79	33.78	3	BULK PACKED	PK-89990-491	
87937-1602	16	----	40.64	38.10	2.14	8.70	2.16	13.00	5	BULK PACKED	PK-89990-491	

ADD P/N: 87937-1602 EC NO: S2010-0138 DRWN:SKANG 2009/08/12 CHKD:ATSEE 2010/01/04 APPR:MLONG 2010/01/14	QUALITY SYMBOLS	GENERAL TOLERANCES (UNLESS SPECIFIED)	DIMENSION STYLE	SCALE	DESIGN UNITS	THIRD ANGLE PROJECTION	
	 	mm	INCH	MM ONLY	NTS	METRIC	
		4 PLACES	± ---	± ---	DRAWN BY	DATE	TITLE
	DESCRIPTION REV	3 PLACES	± ---	± ---	SKLIM01	2006/03/10	CUSTOM HEADER 2.54MM PITCH SINGLE ROW DUAL WAFER HEADER, T/H
		2 PLACES	± 0.2	± ---	CHECKED BY	DATE	
1 PLACE		± ---	± ---	PATEY	2006/03/20	SD-87937-007	
	ANGULAR ± 3 °		APPROVED BY	DATE	MATERIAL NO.	SHEET NO.	
	DRAFT WHERE APPLICABLE MUST REMAIN WITHIN DIMENSIONS		MLONG	2010/01/14	SEE TABLE	2 OF 2	

9 | 8 | 7 | 6 | 5 | 4 | 3 | 2 | 1