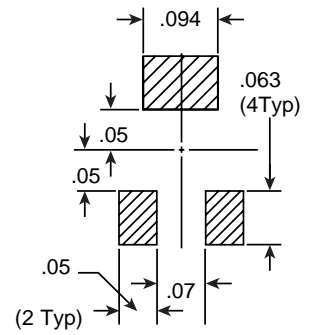
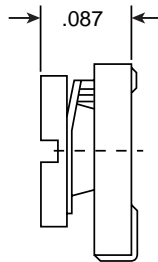
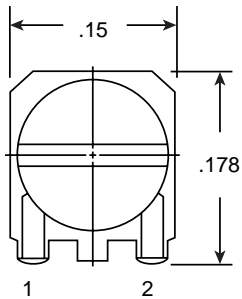
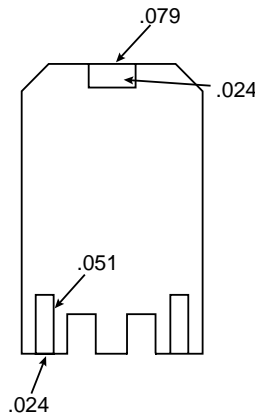


Dimensions (In.)



Pad Mounting Dimensions



Specifications:

- Temperature: $\pm 30\%$
- Taper: Linear
- Power rating: 0.2 watts @ 70 C
- Operating temp: -30 Deg. C to +100 Deg C
- Rotational torque: 20 to 200 q / cm
- Temperature coefficient: ± 250 ppm / deg. C
- Max operating voltage: 100VDC

Standard Values: 1K, 5K, 10K, 20K, 50K, 100K, 500K